



CREEK|CRE

RETAIL SPACE FOR LEASE

MOORE TOWN CENTER

937 SW 25th Street, Moore, OK 73160

AJ TOLBERT
630.843.1989
aj@creekcre.com

ADEN STRUBLE
405.210.3910
aden@creekcre.com

600 NE 4TH STREET, SUITE 100 | OKLAHOMA CITY, OK 73104-6231 | 405.510.0079 | CREEKCRE.COM

APRIL 01, 2026

PROPERTY SUMMARY



PROPERTY DESCRIPTION

Small shop retail space available at Moore Town Center, a highly visible location just off I-35 at 937 SW 25th Street. Positioned in one of Moore's primary retail corridors, the property benefits from strong traffic counts, excellent accessibility, and a dynamic tenant mix of national, regional, and local retailers. Surrounded by major national brands and located across from Costco, this center offers strong consumer draw, ample parking, and prominent pylon signage. Ideal for retailers or service users seeking high exposure in a high-growth trade area.

PROPERTY HIGHLIGHTS

- Major Retail Corridor
- Pylon Sign
- Busy Intersection
- Ample Parking
- Co-Tenancy
- Pad Site Available for Build-To-Suit

OFFERING SUMMARY

Lease Rate:	\$17.00 SF/yr (NNN)
NNN Rate:	\$4.50 SF/yr
Available SF:	1,228 SF
Building Size:	23,800 SF

DEMOGRAPHICS	1 MILE	3 MILES	5 MILES
Total Households	2,267	22,884	43,978
Total Population	6,073	60,743	115,754
Average HH Income	\$66,391	\$65,284	\$70,824

AJ TOLBERT
630.843.1989
aj@creekcre.com

ADEN STRUBLE
405.210.3910
aden@creekcre.com

ADDITIONAL PHOTOS



AJ TOLBERT
630.843.1989
aj@creekcre.com

ADEN STRUBLE
405.210.3910
aden@creekcre.com

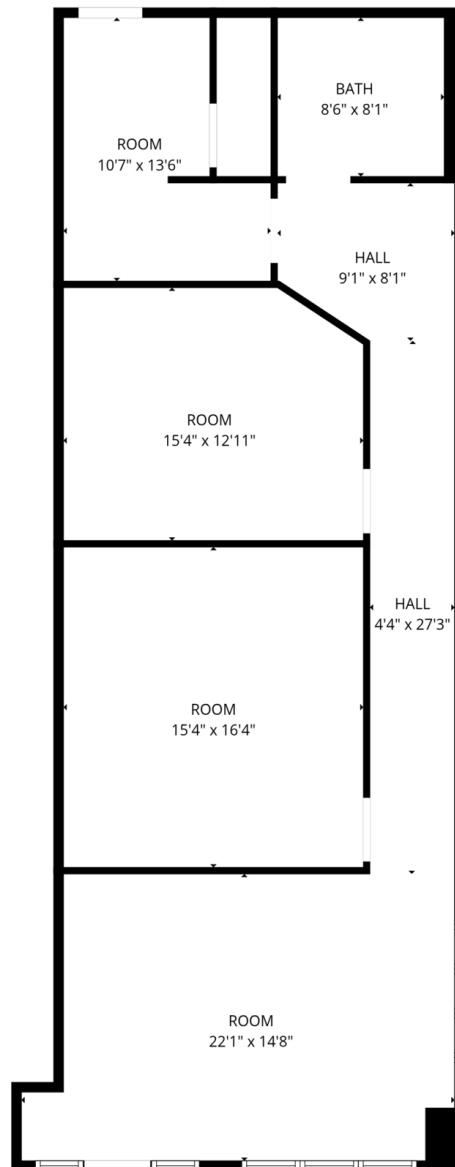
SITE PLANS



AJ TOLBERT
630.843.1989
aj@creekcre.com

ADEN STRUBLE
405.210.3910
aden@creekcre.com

FLOOR PLANS



FLOOR PLAN CREATED BY CUBICASA APP. MEASUREMENTS DEEMED HIGHLY RELIABLE BUT NOT GUARANTEED.

AJ TOLBERT
630.843.1989
aj@creekcre.com

ADEN STRUBLE
405.210.3910
aden@creekcre.com

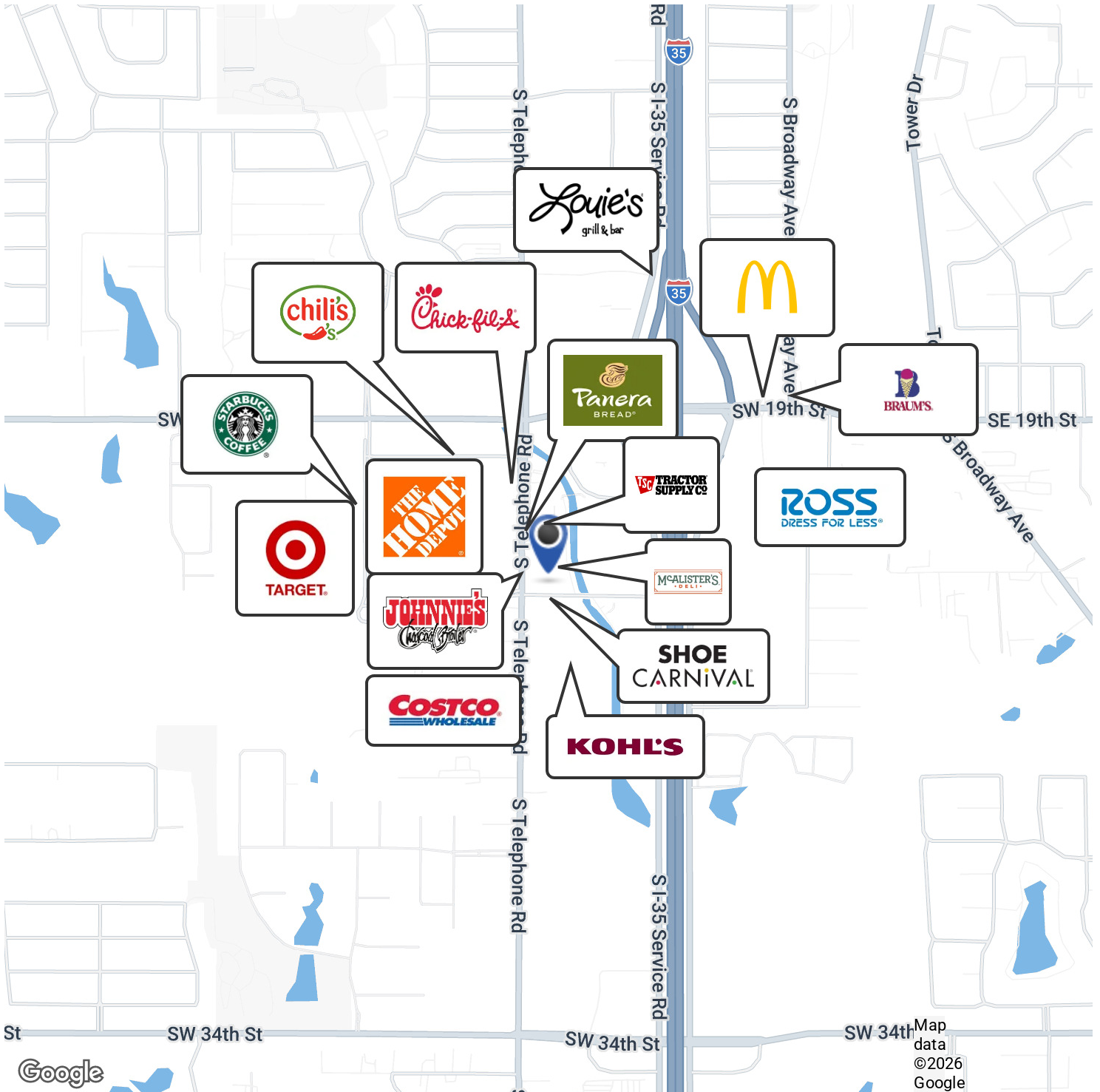
LOCATION MAP



AJ TOLBERT
630.843.1989
aj@creekcre.com

ADEN STRUBLE
405.210.3910
aden@creekcre.com

RETAILER MAP



AJ TOLBERT
630.843.1989
aj@creekcre.com

ADEN STRUBLE
405.210.3910
aden@creekcre.com