

# MURAL PARK

**Loft Office @ 924 W 19<sup>th</sup> Place in Pilsen**

AVISON  
YOUNG



GET OUT OF THE LOOP

**AND INTO THE PARK!**



# MURAL PARK



Welcome to Mural Park. Located in Pilsen, one of Chicago's most culturally rich, historically significant and active neighborhoods. Mural Park is a creative office and commercial redevelopment of two, 100,000 square foot loft buildings.

Mural Park will be a primary destination along the City of Chicago's new El Paseo, a 4 mile bicycle and walking "rails-to-trails" corridor connecting University Village with Pilsen and Little Village. A large public plaza featuring local art installations, community gathering amenities and year round gardens will connect the two 100-year old buildings of Mural Park.

# Why Pilsen

Listed as one of ***Forbes' Coolest Neighborhoods in the World*** for its thriving arts scene, delicious food, local craftsman, and rich history, Pilsen is truly special.

Mural Park embraces Pilsen's roots and authenticity, while catering to today's creative tenants. El Paseo adds another reason to come to Pilsen as the old railroad bed-turned cycling and walking path complements the park's great location and amenities. Mural Park is just 8 minutes south of Randolph Street and is easily accessible via I-90/I-290, I-55 with CTA and Metra stations nearby.

In addition to its vibrant arts scene and historical charm, Pilsen offers a unique blend of cultural experiences that attract visitors from all over. The neighborhood is home to numerous galleries, studios, and performance spaces that showcase the talents of local artists. Food enthusiasts can indulge in a diverse array of culinary delights, from traditional Mexican cuisine to innovative fusion dishes.

The community's commitment to preserving its heritage is evident in the beautifully restored buildings and the colorful murals that adorn the streets, telling the stories of Pilsen's rich past and dynamic present.



**“a nest of cutting-edge culture and art”**

Forbes Magazine



90  
94



Frida Room

18<sup>TH</sup> STREET

ASHLAND AVENUE

Pilsen's Fitness Center

15 Min

Alulu Brewery & Pub

El Paseo

16<sup>TH</sup> STREET

BLUE ISLAND AVENUE  
RACINE AVENUE

10 Min

Dusek's

Honky Tonk BBQ

CERMAK ROAD

8 Min

La Vaca

3 Min

Simone's

5 Min

HaiSous

Vive

5Rabbit Cerveceria

MURAL PARK

Around the Bend Beer Company

Lo Rez Brewing & Taproom

8 Min

EnergyM

ParkWorks

DeColores

CrossFit Commitment

5 Min

Divvy Station

HALSTED STREET

Pleasant House

9 Min

Skylark

8 Min

Metra BSNF

7 Min

- |  |             |  |         |  |                |  |                |
|--|-------------|--|---------|--|----------------|--|----------------|
|  | Museum      |  | Brewery |  | 3-Minute Walk  |  | 15-Minute Walk |
|  | Restaurants |  | Fitness |  | 10-Minute Walk |  | 20-Minute Walk |

# THE RIGHT AMENITIES





## A+ Lobby

Comfortable lobby with massive windows, high ceilings & abundant natural light.



## Greenspace

A beautifully landscaped park that will serve as an outdoor art gallery and meeting place.



## El Paseo

Mural Park is situated along Pilsen's new 4-mile bicycle and walking path.



## Bicycle Storage

Mural Park offers convenient bicycle storage facilities, making it easy for you to cycle to work and securely store your bike on-site.



## On-Site Parking

Mural Park now offers newly-expanded on-site parking, ensuring even greater convenience and accessibility for you and your team.



## Dog Friendly

Mural Park is a dog friendly office park, so go ahead and bring your pup to work.

# Availabilities

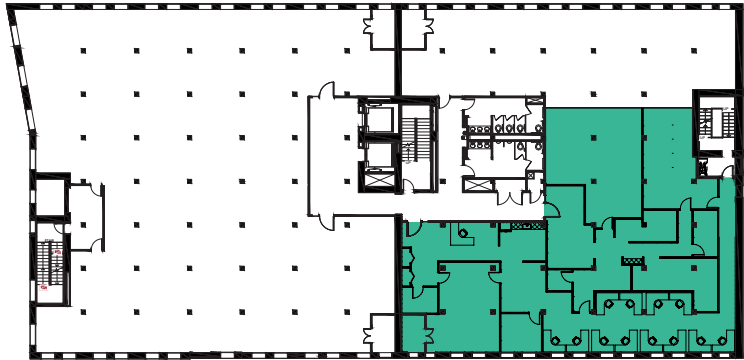
The office spaces at Mural Park feature charming brick and timber loft construction, offering a unique blend of historic character and modern functionality. With high ceilings and abundant natural light, these spaces create an open and inviting atmosphere.



**Suite 200** - 6,112 SF  
*Existing conditions*

**Suite 225** - 5,435 SF  
*Spec suite conditions*

**Suite 250** - 4,718 SF  
*Spec suite conditions*



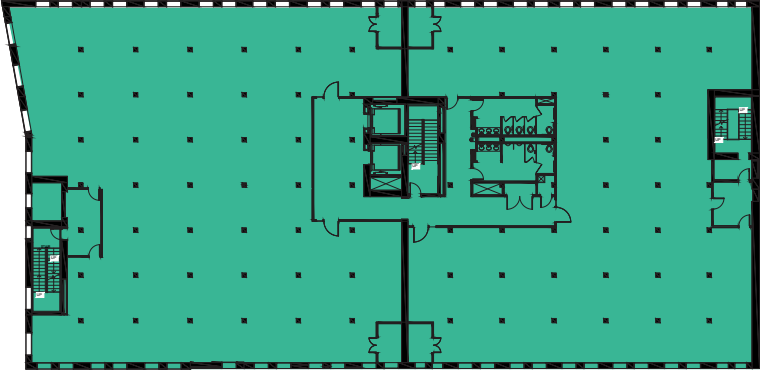
**Suite 350** - 6,336 SF  
*Existing conditions*

# Large Block

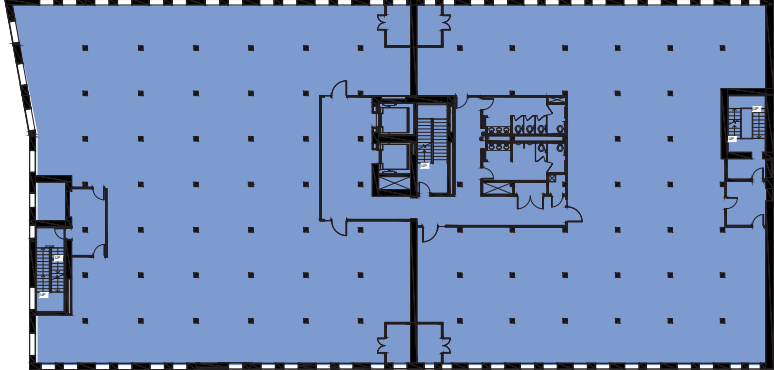
Available

42,418 SF

Contiguous

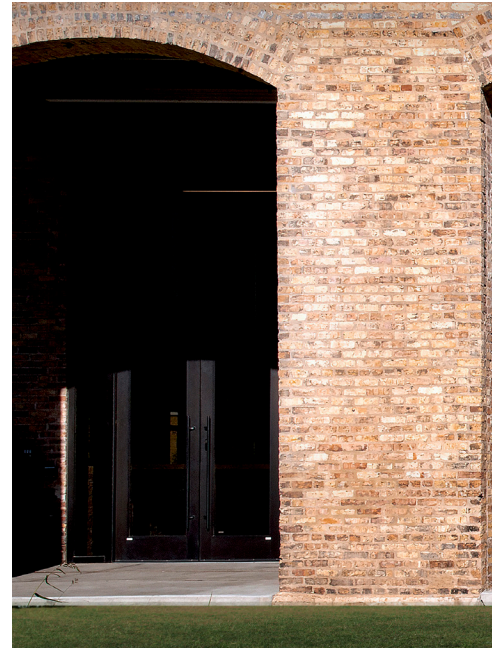
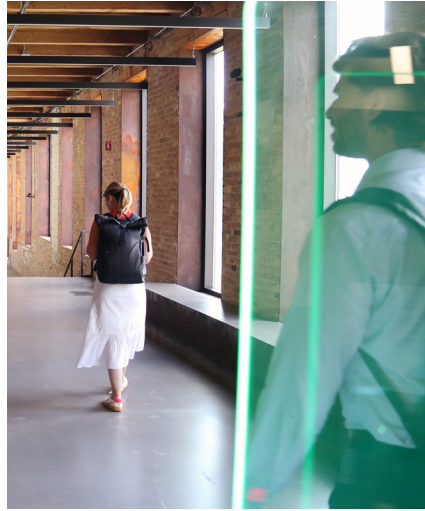


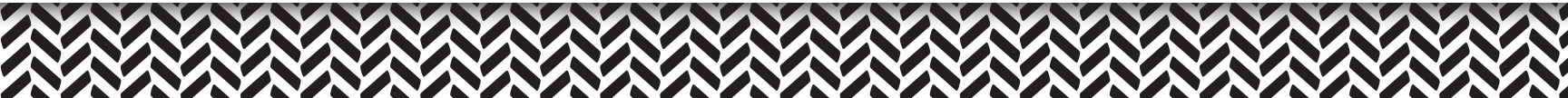
4th Floor - 21,209 SF



5th Floor - 21,209 SF







# MURAL PARK

**Danny Nikitas**

Principal

312.753.8794

[danny.nikitas@avisonyoung.com](mailto:danny.nikitas@avisonyoung.com)

**Konstantine T. Sepsis**

Principal

312.273.4501

[konstantine.sepsis@avisonyoung.com](mailto:konstantine.sepsis@avisonyoung.com)

AVISON  
YOUNG