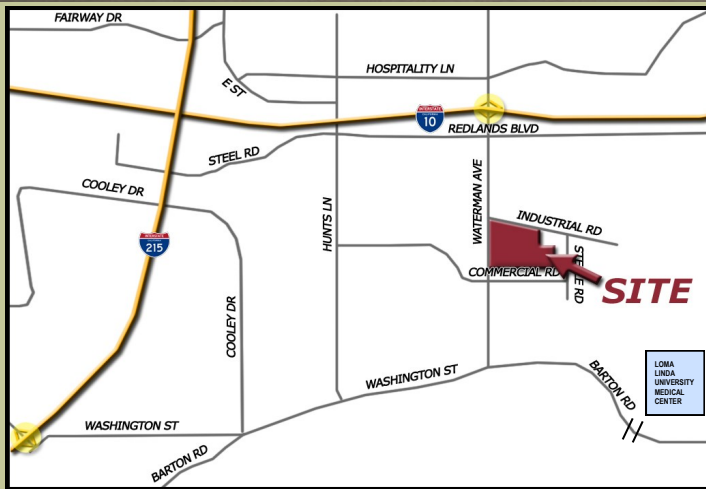


**WATERMAN
BUSINESS
CENTER**

**OFFICE/FLEX UNIT B110
▪ FOR LEASE ▪ \$3,577/MO MG
2,129 SQUARE FEET**

328 & 350 EAST COMMERCIAL ROAD, SAN BERNARDINO/LOMA LINDA



LOCATION:

- ◆ Located in Qualified Opportunity Zone
- ◆ Waterman Ave. Frontage (+/- 25,000 average daily traffic)
- ◆ 1/4 mile to/from Interstate 10. One mile to/from I-215
- ◆ Close to plentiful Hospitality Lane Amenities
- ◆ Loma Linda or San Bernardino Post Office Address
- ◆ FIOS fiber optic internet services available
- ◆ High Quality Professional Tenant Base



SEVENTH STREET DEVELOPMENT

Seventh Street Development, Inc.
Scott Furniss (CA DRE#02069135)
Craig Furniss (CA DRE#01057073)

(562) 427-7771—Call or Text

WATERMAN BUSINESS CENTER

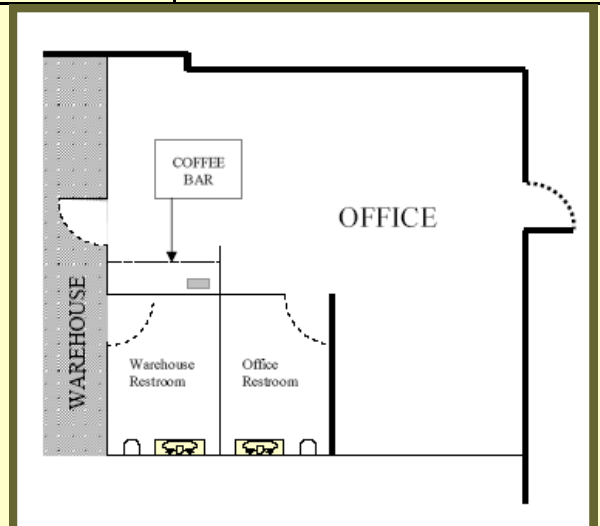
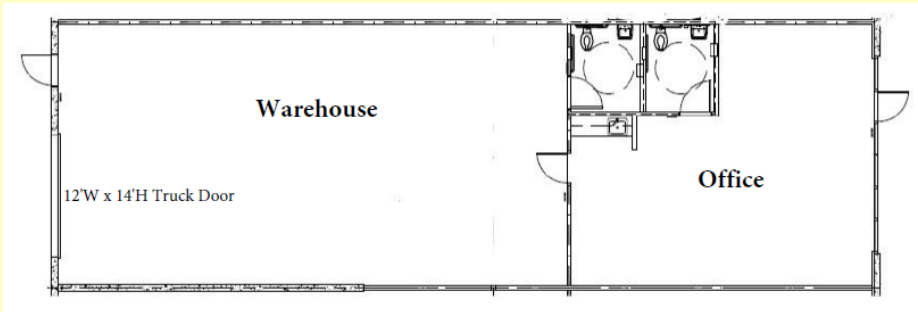
Commercial Office/Flex Unit For Lease 2,129 Square Feet



FEATURES:

- ◆ Nightly security patrols
- ◆ Up to 4 per 1000 SF parking ratio
- ◆ Fully insulated (R19) warehouse area with 12'W x 14'H truck door
- ◆ Secure truck yard with motorized gates and personal access code
- ◆ FIOS fiber optic internet/data services available
- ◆ Ample TI Allowance Available
- ◆ Building Signage

	B110
Total Sq. Ft.	2,129
Office Sq. Ft.	781
Parking Ratio	4/1,000
Grade-Level Doors	1
Clear Height	13.5-16.5'
Fire Sprinklers	Y



SAN BERNARDINO'S HIGHEST QUALITY INDUSTRIAL PROJECT

Seventh Street Development, Inc.
 Scott Furniss (CA DRE#02069135)
 Craig Furniss (CA DRE#01057073)

Call or Text - (562) 427-7771

