

AVAILABLE FOR LEASE

3801 Computer Dr.

NORTH HILLS PROFESSIONAL PARK



Welcome to North Hills Professional Park. Offering a wide range of office and retail space. Conveniently located off Six Forks Rd in North Hills, walking distance from shopping and restaurants.

PROPERTY HIGHLIGHTS

- Easy access to the beltline
- Ample parking
- Walking distance to North Hills
- **Lease Rate: \$26.50 - \$30**

CONTACT

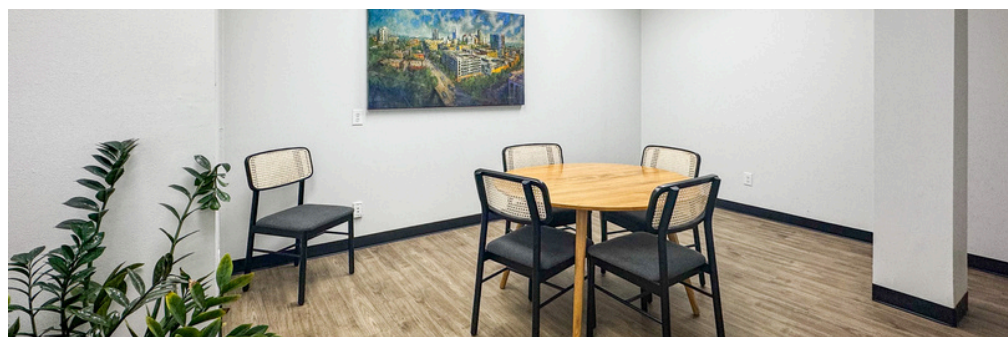
Tyler Christensen, Broker
(C) 828.999.9459
tchristensen@atlasstark.com

Availability

375 - 1,524 SQ. FT.

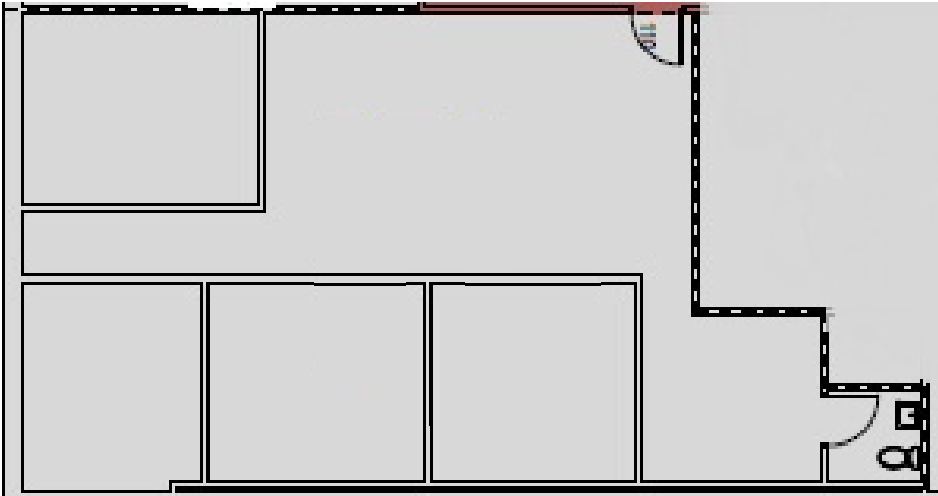
ATLAS  STARK

ADDRESS	SUITE	SIZE	PRICE
3801 Computer Dr	Suite 105	790 SF	\$1,600 / month
3801 Computer Dr	Suite 107	422 SF	\$900 / month
3801 Computer Dr	Suite 109	419 SF	\$900 / month
3801 Computer Dr	Suite 110	1,524 SF	\$26.50 SF
3801 Computer Dr	Suite 112	375 SF	\$780 / month
3801 Computer Dr	Suite 201	1,298 SF	\$26.50 SF



Floorplans

Suite 110: 1,524 SQ. FT.



Suite 201: 1,298 SQ. FT.

