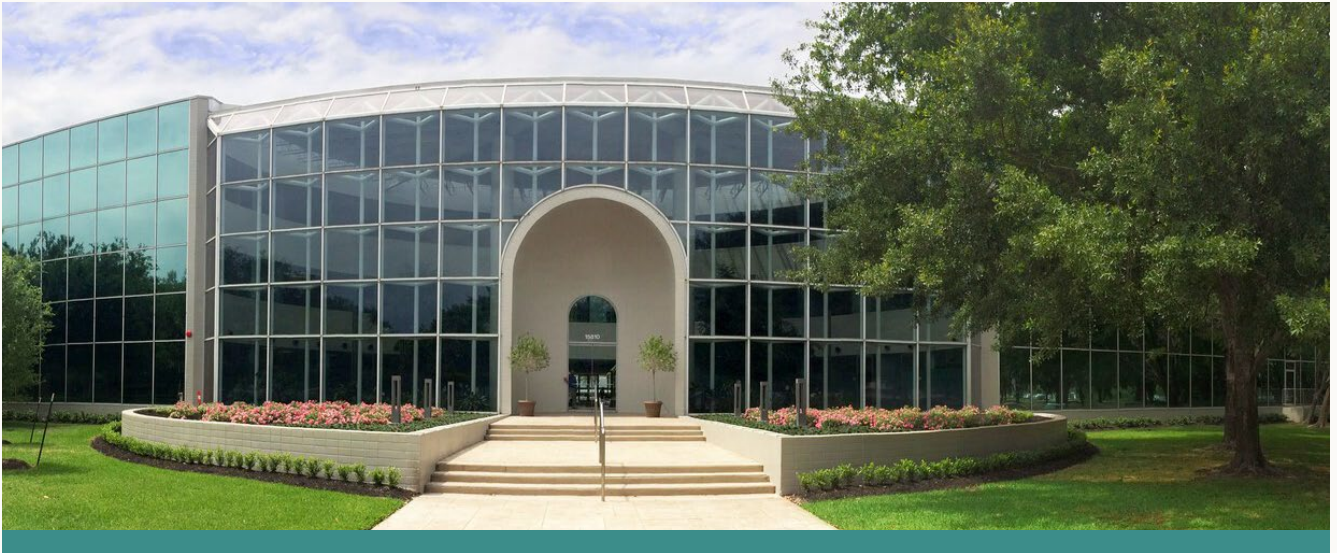


15810 PARK TEN PLACE

HOUSTON, TEXAS 77084



MOVE-IN READY



LEVEL

2

SUITE

200

MOVE-IN READY

2,564 SF

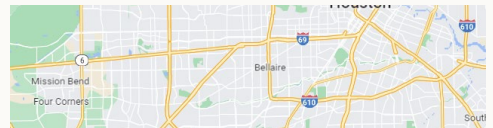
A DISTINCTIVE ADDRESS IN THE ENERGY CORRIDOR

Suite 200 is offered in move-in-ready condition at Broadfield at Park Ten. The property is strategically in the Energy Corridor between Sam Houston Parkway and the Grand Parkway, with convenient access to I-10, Highway 6, hotels, restaurants and everyday amenities.



DIRECT ACCESS

Directly off the elevator lobby



LEASING CONTACTS

RYAN T. CROPPER

Director of Real Estate Services

713.800.0304

rcropper@missioncompanies.com

RYAN CLARK

Director of Acquisitions and Development

713.800.0297

rclark@missioncompanies.com

MISSION COMPANIES | 713.782.8550

14825 St. Mary's Ln, Suite 125
Houston, Texas 77079

MOVE-IN READY

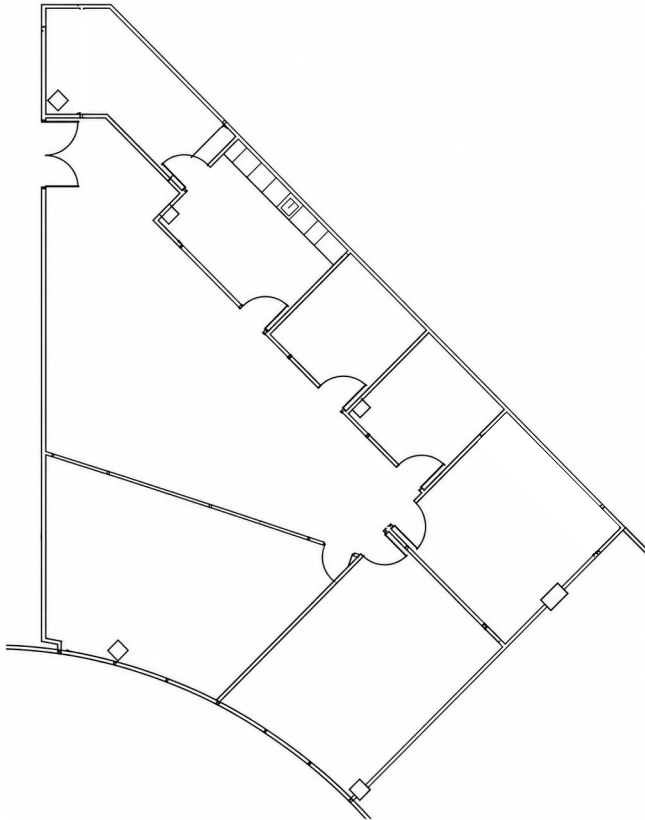
LEVEL 2 / 2,564 SF

Suite 200

FLOOR PLAN

DIRECT ELEVATOR LOBBY ACCESS

Suite 200 / Level 2



MOVE-IN READY

2,564 SF

LEASING CONTACTS

MISSION COMPANIES | 713.782.8550

RYAN T. CROPPER

Director of Real Estate Services

713.800.0304

rcropper@missioncompanies.com

RYAN CLARK

Director of Acquisitions and Development

713.800.0297

rclark@missioncompanies.com

14825 St. Mary's Ln, Suite 125
Houston, Texas 77079