



Lease Rate:

\$28.00/SF

Full Service

CONTACT

Henry Roe

Vice President

+1 803 401 4283

henry.roe@colliers.com



Colliers | South Carolina

1301 Gervais Street, Ste 600

Columbia, SC 29201

+1 803 254 2300

FOR LEASE

Top Floor Suite Available in Downtown Columbia High-Rise

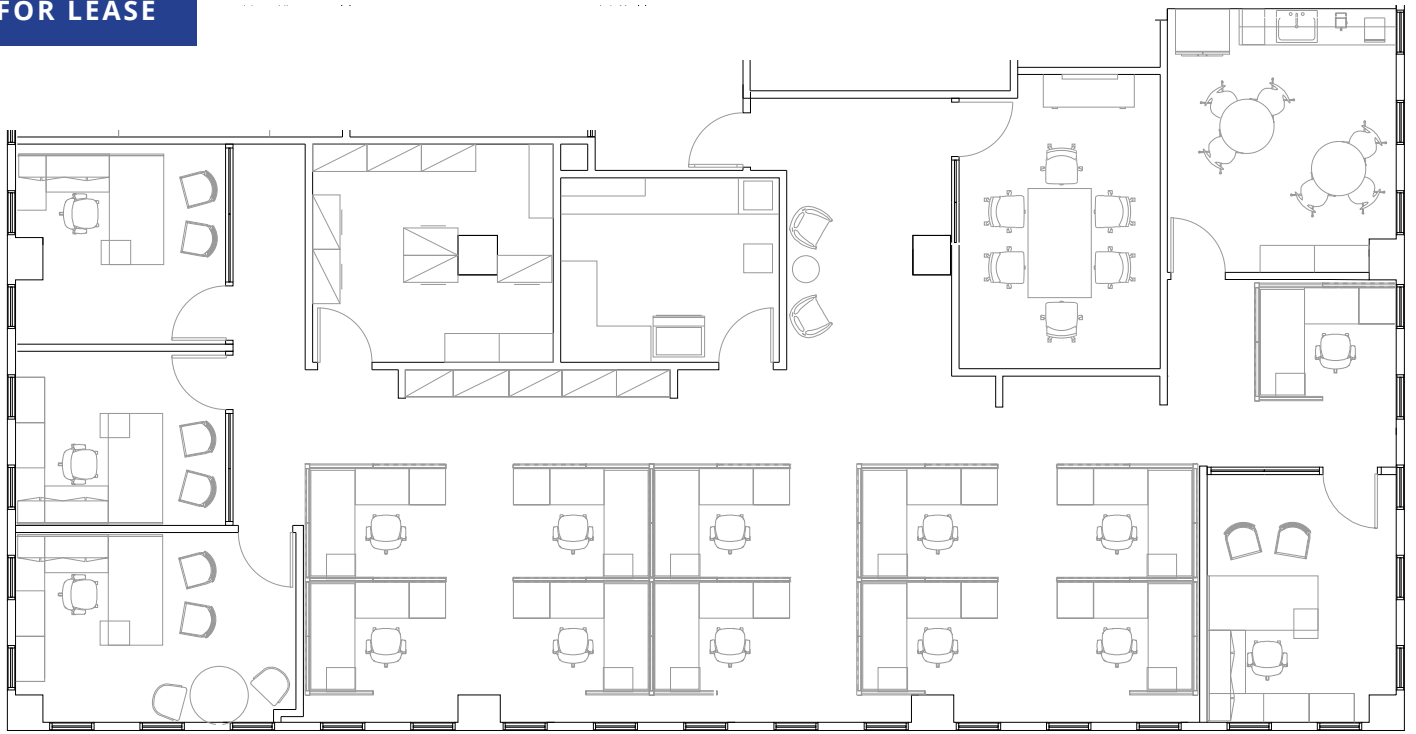
1301 Gervais Street | Columbia, SC 29201

Highlights

- Suite 2010 Available: ±3,037 SF
- Located on the 20th (top) floor
- Excellent views of the State House & Columbia skyline
- 4 private offices, open work area, conference room, print room, storage room and break area
- Building amenities include an attached parking garage with reserved and visitor parking, a new 40-seat conference center, training room, additional conference room with a catering pantry, an on-site fitness room, on-site security and management and on-site deli

The Tower at 1301 Gervais Street is located in Columbia's Central Business District and within walking distance to the Main Street District, the Vista and the State House. This central location offers easy access to business, government, retail and cultural amenities, as well as quick access to Interstate 77 and Interstate 26.

FOR LEASE



CONTACT

Henry Roe

Vice President
+1 803 401 4283
henry.roe@colliers.com



Colliers | South Carolina

1301 Gervais Street, Ste 600
Columbia, SC 29201
+1 803 254 2300



Copyright © 2026 Colliers International.
Information herein has been obtained from
sources deemed reliable, however its accuracy
cannot be guaranteed. The user is required to
conduct their own due diligence and
verification.