



North Meridian Plaza

2119- B Haslett Road
Haslett, MI 48840, Michigan 48840

Property Highlights

- Immediate occupancy in established strip center
- 2,000 SQ FT open floor plan with 2 bathrooms
- C-1 zoning
- Near Costco, Meridian Mall, & East Lansing
- Phenomenal demographics

Offering Summary

Lease Rate:	\$13.50 SF/yr (NNN)
Building Size:	16,600 SF
Available SF:	2,000 SF
Lot Size:	1.8 Acres

For More Information

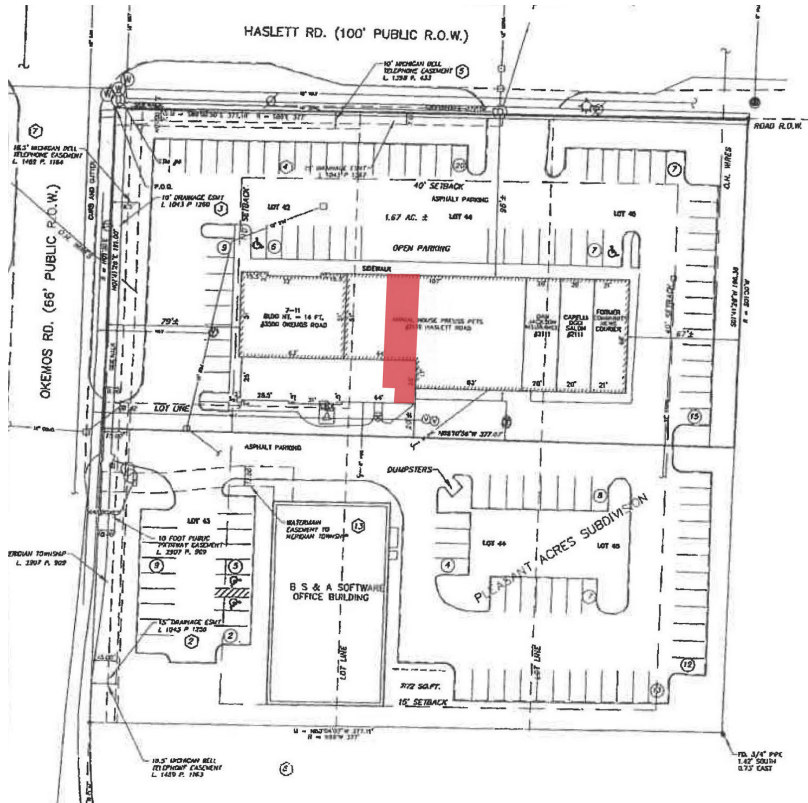
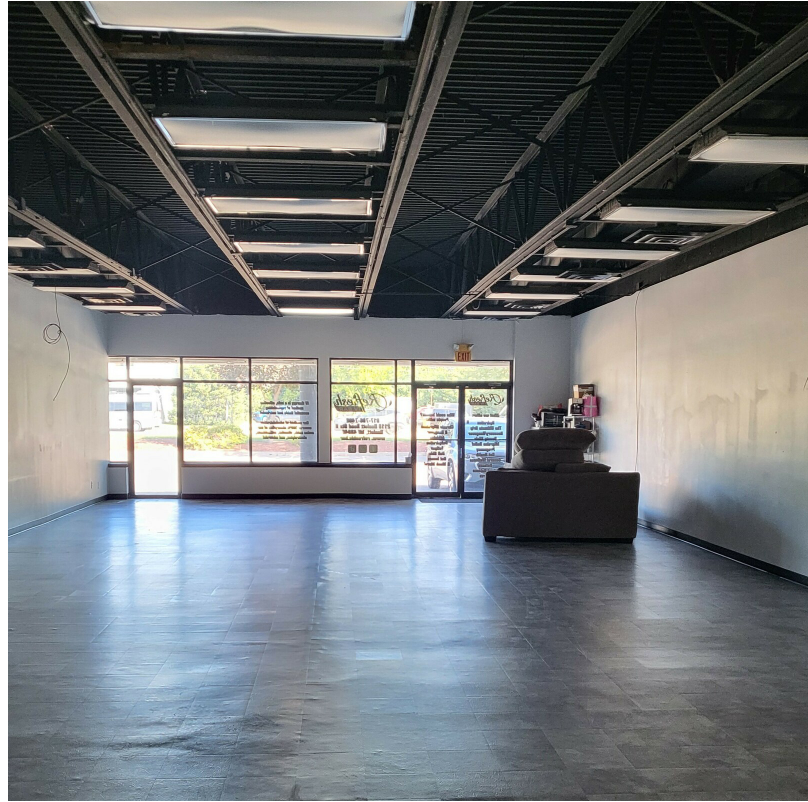


Gino Baldino

Commercial Advisor

O: 517 487 9222 | C: 517 202 2137

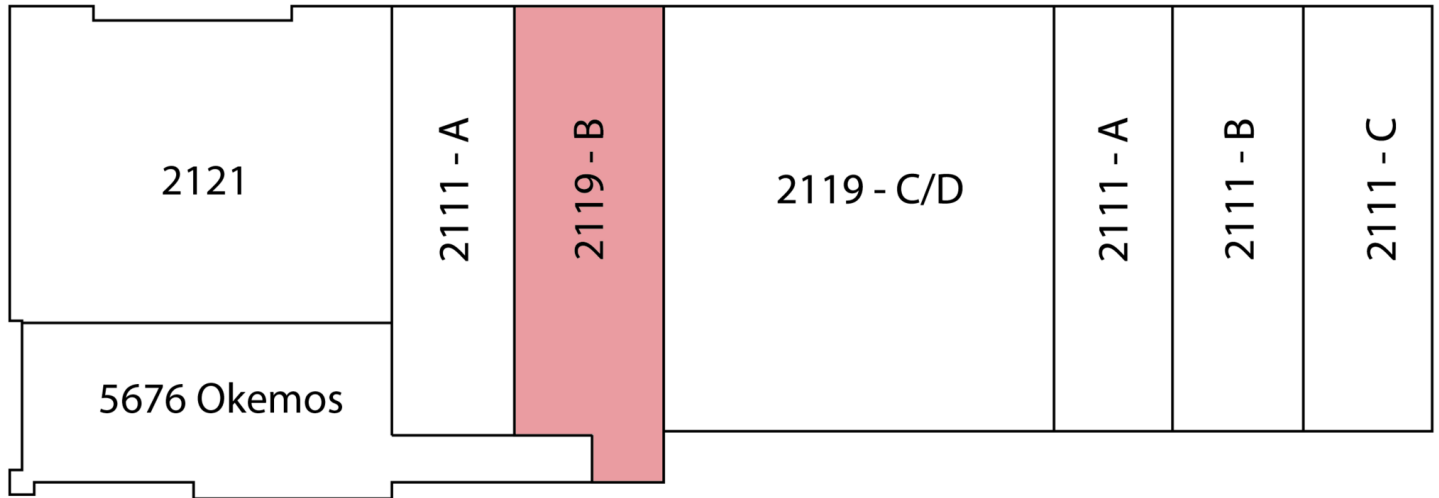
gbaldino@naimidmichigan.com

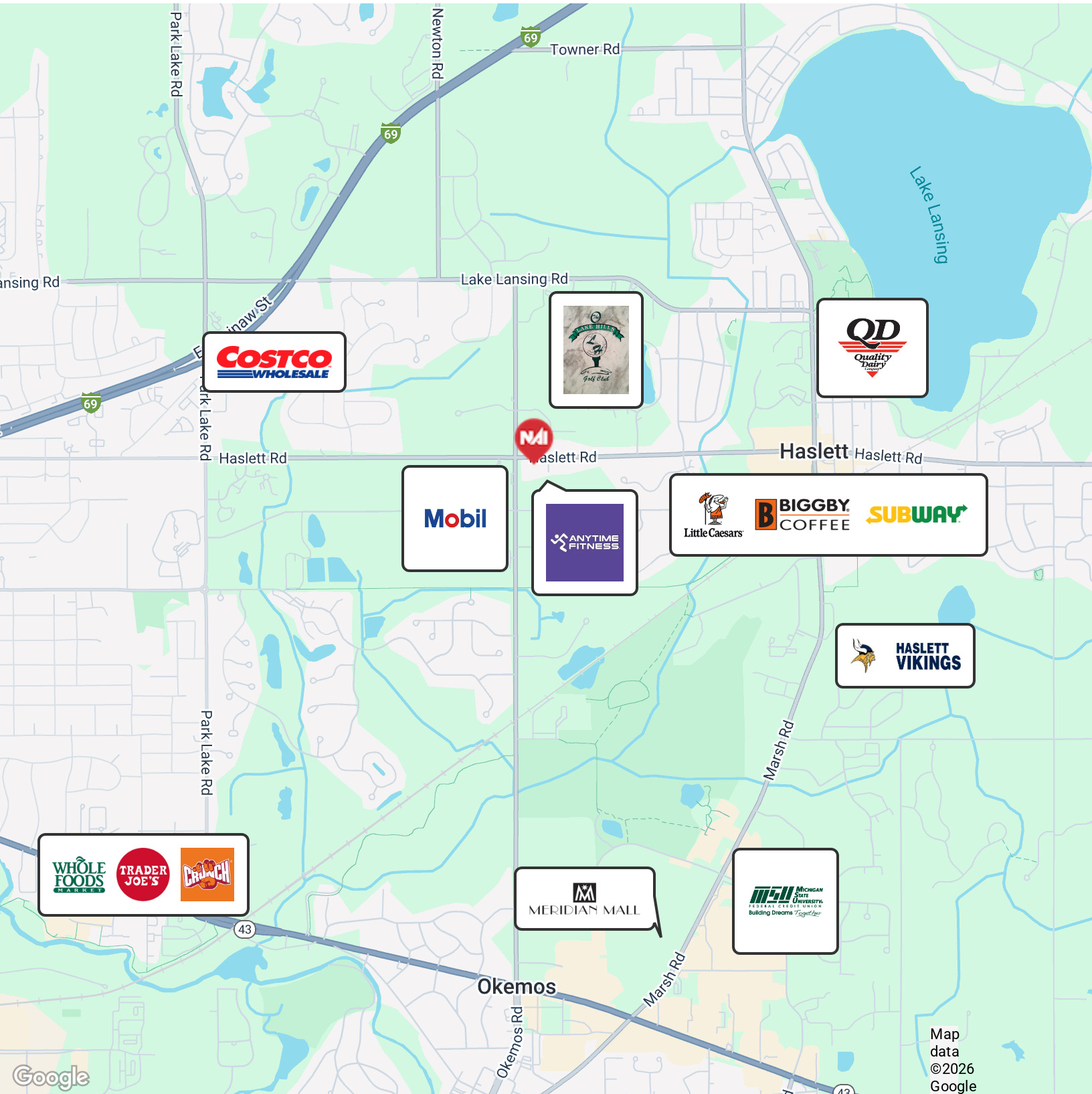


NO WARRANTY OR REPRESENTATION, EXPRESS OR IMPLIED, IS MADE AS TO THE ACCURACY OF THE INFORMATION CONTAINED HEREIN, AND THE SAME IS SUBMITTED SUBJECT TO ERRORS, OMISSIONS, CHANGE OF PRICE, RENTAL OR OTHER CONDITIONS, PRIOR SALE, LEASE OR FINANCING, OR WITHDRAWAL WITHOUT NOTICE, AND OF ANY SPECIAL LISTING CONDITIONS IMPOSED BY OUR PRINCIPALS NO WARRANTIES OR REPRESENTATIONS ARE MADE AS TO THE CONDITION OF THE PROPERTY OR ANY HAZARDS CONTAINED THEREIN ARE INTENDED TO BE IMPLIED

2149 Jolly Road, Suite 200
Okemos, MI 48864
517 487 9222 tel
naimidmichigan.com

Haslett Rd.

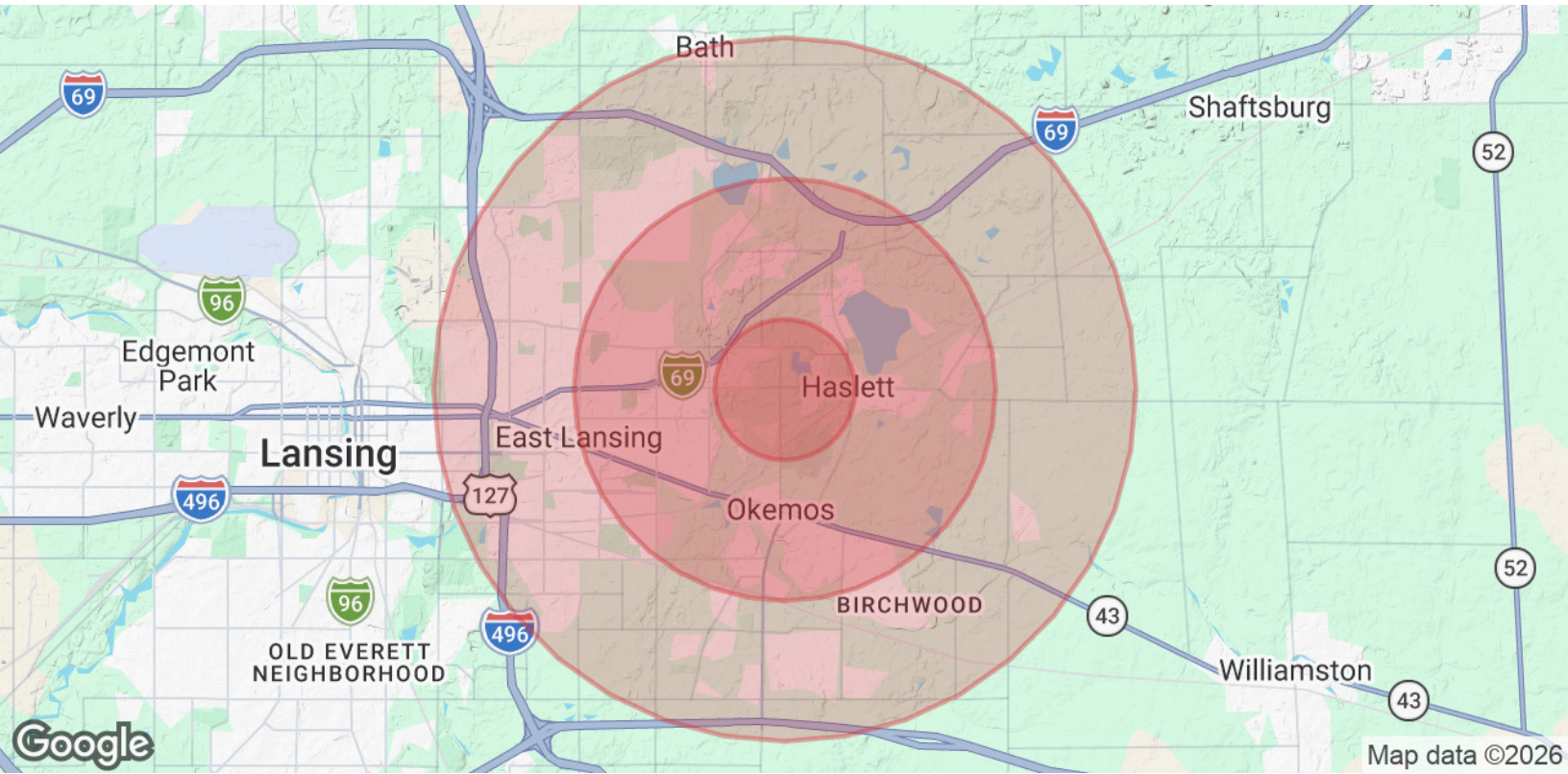




Map data ©2026 Google

NO WARRANTY OR REPRESENTATION, EXPRESS OR IMPLIED, IS MADE AS TO THE ACCURACY OF THE INFORMATION CONTAINED HEREIN, AND THE SAME IS SUBMITTED SUBJECT TO ERRORS, OMISSIONS, CHANGE OF PRICE, RENTAL OR OTHER CONDITIONS. PRIOR SALE, LEASE OR FINANCING, OR WITHDRAWAL WITHOUT NOTICE, AND OF ANY SPECIAL LISTING CONDITIONS IMPOSED BY OUR PRINCIPALS NO WARRANTIES OR REPRESENTATIONS ARE MADE AS TO THE CONDITION OF THE PROPERTY OR ANY HAZARDS CONTAINED THEREIN ARE INTENDED TO BE IMPLIED

2149 Jolly Road, Suite 200
Okemos, MI 48864
517 487 9222 tel
naimidmichigan.com



Population	1 Mile	3 Miles	5 Miles
Total Population	5,956	59,751	118,721
Average Age	46	36	36
Average Age (Male)	43	34	35
Average Age (Female)	48	37	36
Households & Income	1 Mile	3 Miles	5 Miles
Total Households	2,932	23,117	45,901
# of Persons per HH	2	2.6	2.6
Average HH Income	\$102,505	\$93,227	\$97,882
Average House Value	\$285,538	\$298,574	\$282,642

Demographics data derived from AlphaMap