

For Sublease

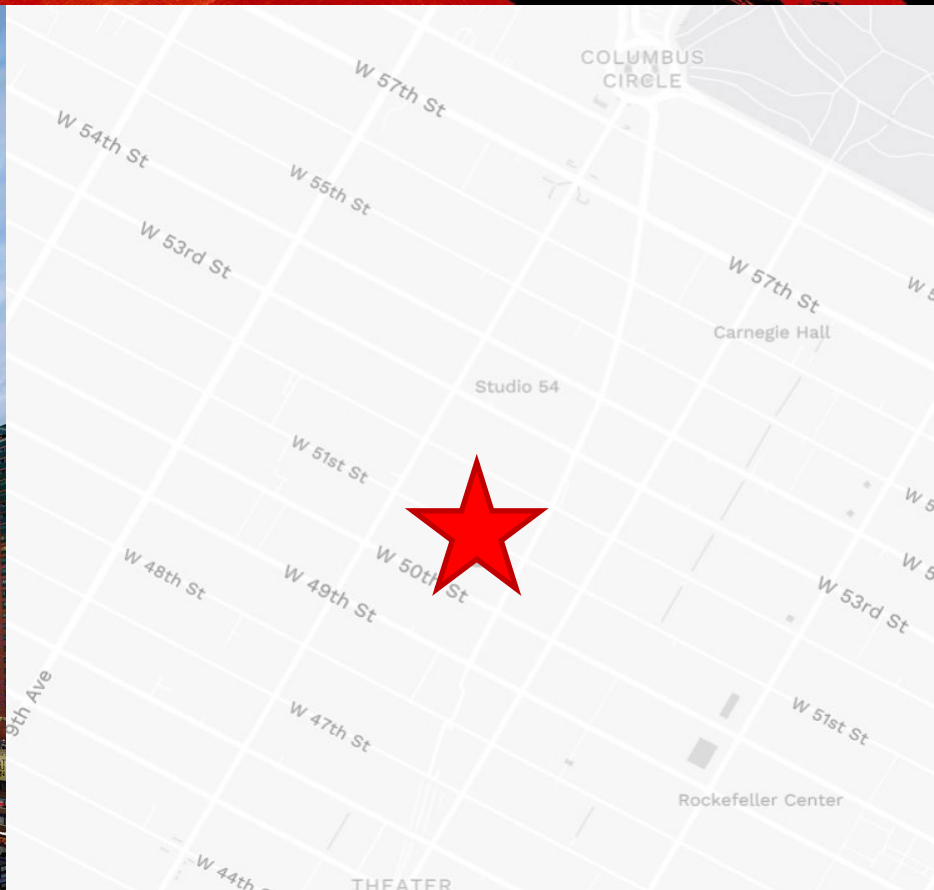


1633 Broadway

Partial 25th Floor - 23,140 RSF – Divisible from 6,900 RSF

High end, plug & play sublease opportunity

[View the Virtual Tour](#)



Space Highlights:

- 23,140 RSF
- 6,900 – 14,514 divisions available
- Available immediately
- City Views from the north, east, and south sides.
- Term through November 30, 2032
- Furnished plug & play opportunity with recently built installation

Space Programming:

Open Area: 55 workstations – room to densify

Offices: 9 offices

Conference Rooms: 3 conference rooms + all hands / studio space for 45+

Divisions considered

Robin Olinyk

+1 212 376 1231

Robin.Olinyk@jll.com

Clark Finney

+1 212 812 6505

Clark.Finney@jll.com

Dan Santagata

+1 212 812 5919

Dan.Santagata@jll.com

TJ Hohanadel

+1 212 812 5735

TJ.Hochanadel@jll.com

Rob Martin

+1 212 812 6435

Robert.Martin@jll.com

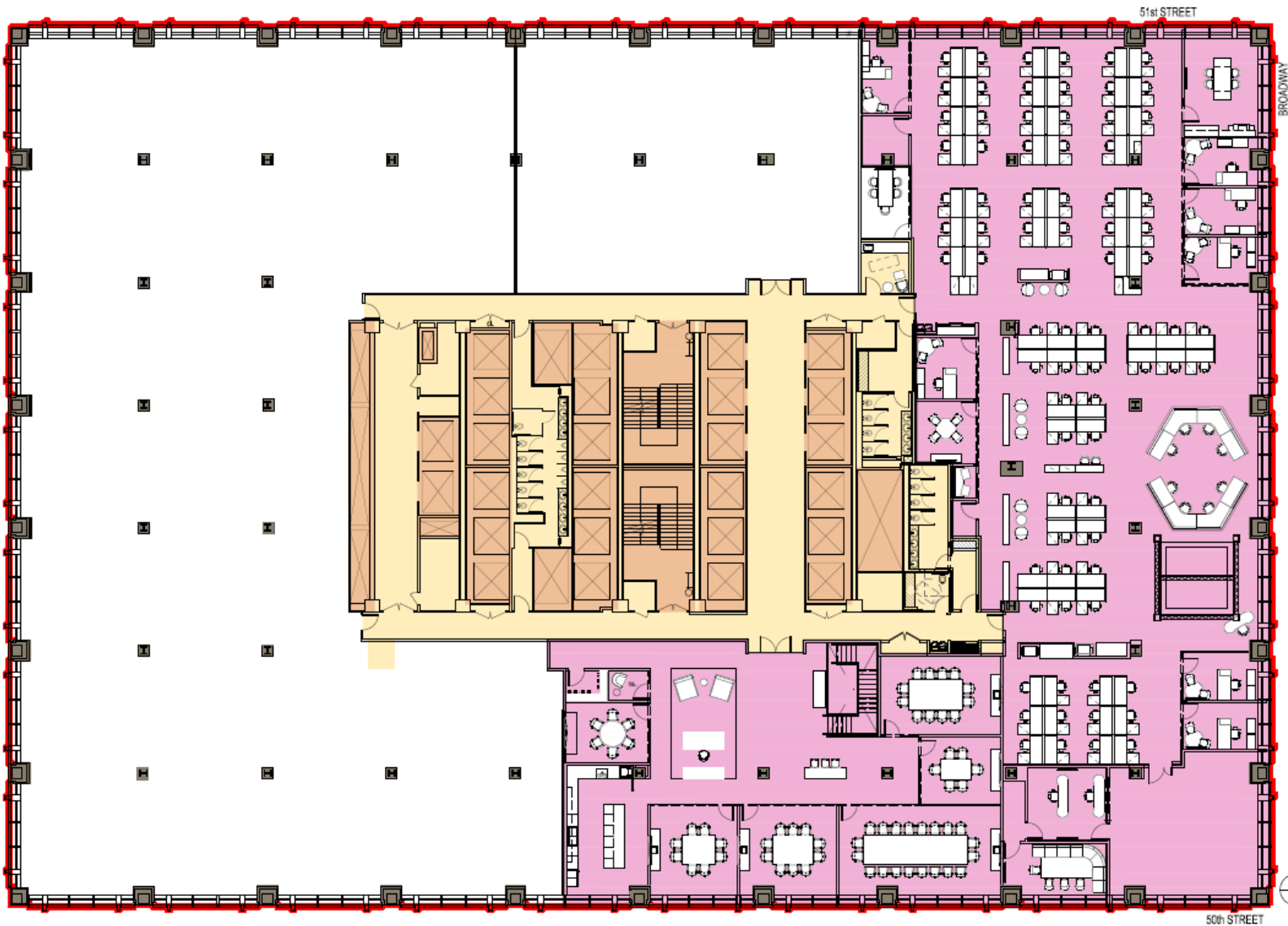
For Sublease



1633 Broadway

Partial 25th Floor – 16,512 RSF - 23,140 RSF

Partial 25th Floor – Existing Conditions



[View the Virtual Tour](#)

Robin Olinyk

+1 212 376 1231

Robin.Olinyk@jll.com

Clark Finney

+1 212 812 6505

Clark.Finney@jll.com

Dan Santagata

+1 212 812 5919

Dan.Santagata@jll.com

TJ Hochanadel

+1 212 812 5735

TJ.Hochanadel@jll.com

Rob Martin

+1 212 812 6435

Robert.Martin@jll.com

Although information has been obtained from sources deemed reliable, neither Owner nor JLL makes any guarantees, warranties or representations, express or implied, as to the completeness or accuracy as to the information contained herein. Any projections, opinions, assumptions or estimates used are for example only. There may be differences between projected and actual results, and those differences may be material. The Property may be withdrawn without notice. Neither Owner nor JLL accepts any liability for any loss or damage suffered by any party resulting from reliance on this information. If the recipient of this information has signed a confidentiality agreement regarding this matter, this information is subject to the terms of that agreement. ©2021 Jones Lang LaSalle IP, Inc. All rights reserved.

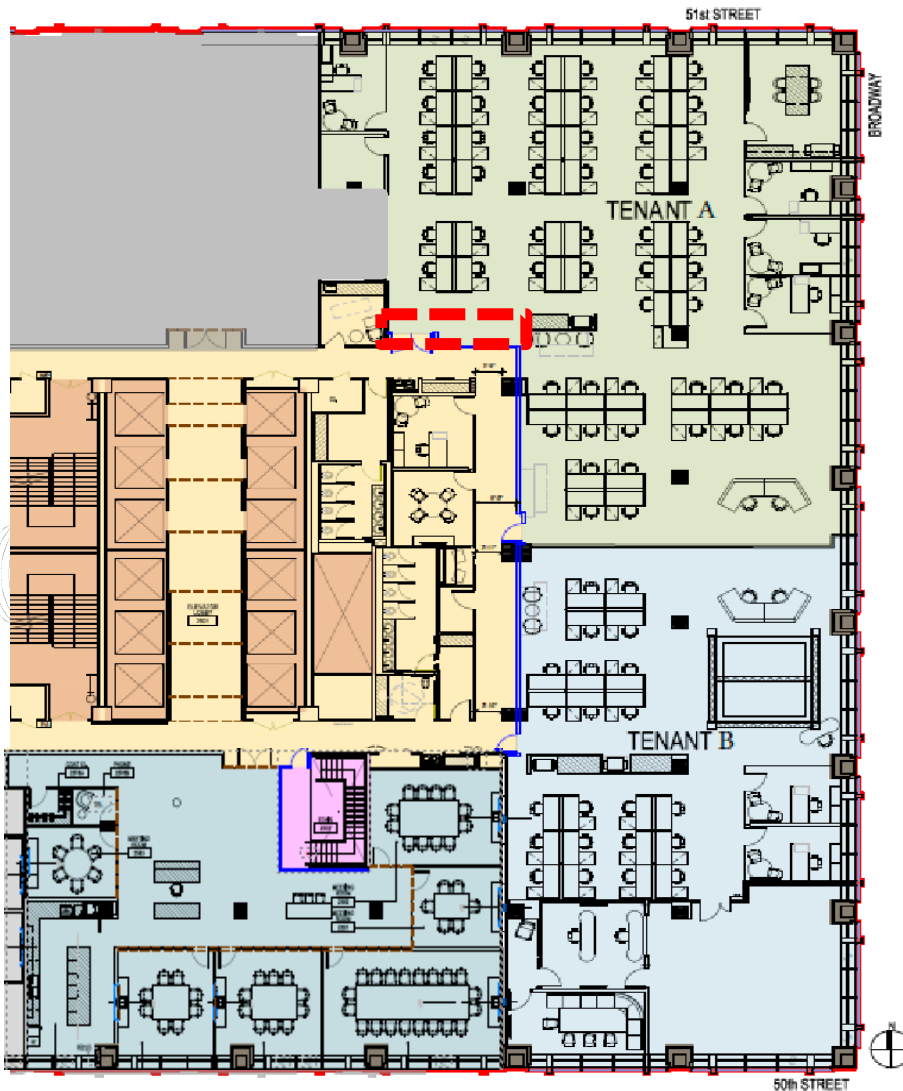
For Sublease



1633 Broadway

Partial 25th Floor – Division Options

Partial 25th Floor – Demised Premises Plan



Recommended Divisions:

Tenant A:

- 8,626 RSF
- Open Seating: 47 Desks
- 2 Conference Rooms
- 3 Offices
- Access to shared conference rooms space with Tenant B

Tenant B:

- 6,913 RSF – 14,514 RSF
- Open Seating: 22 Desks
- 2 Conference Rooms
- 2 Offices
- Access to shared conference rooms space with Tenant A

 Recommended Pantry Location

Robin Olinyk

+1 212 376 1231

Robin.Olinyk@jll.com

Clark Finney

+1 212 812 6505

Clark.Finney@jll.com

Dan Santagata

+1 212 812 5919

Dan.Santagata@jll.com

TJ Hochanadel

+1 212 812 5735

TJ.Hochanadel@jll.com

Rob Martin

+1 212 812 6435

Robert.Martin@jll.com

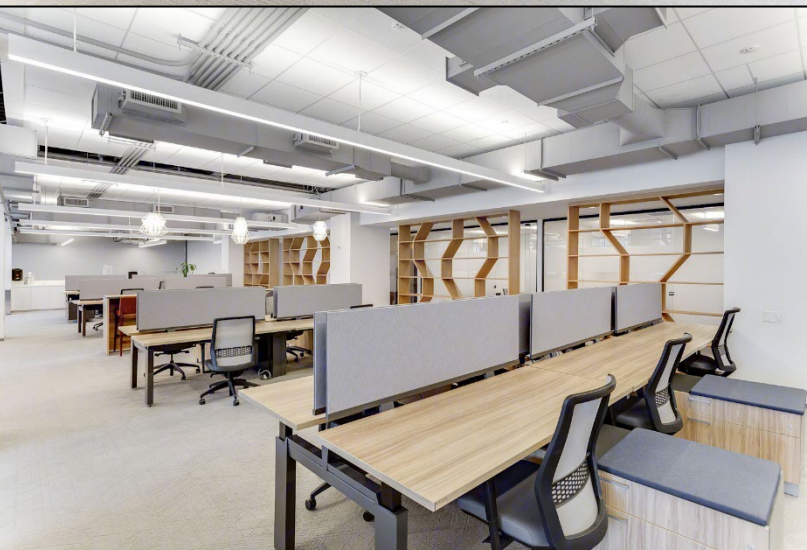
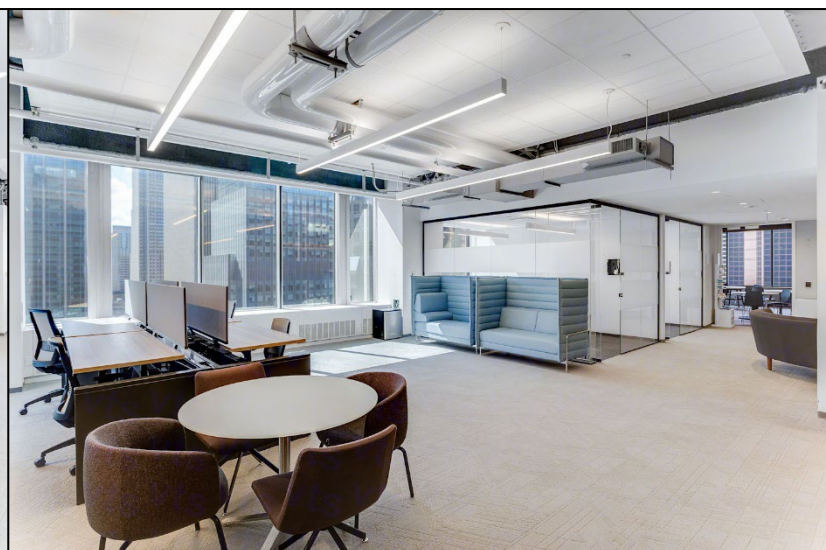
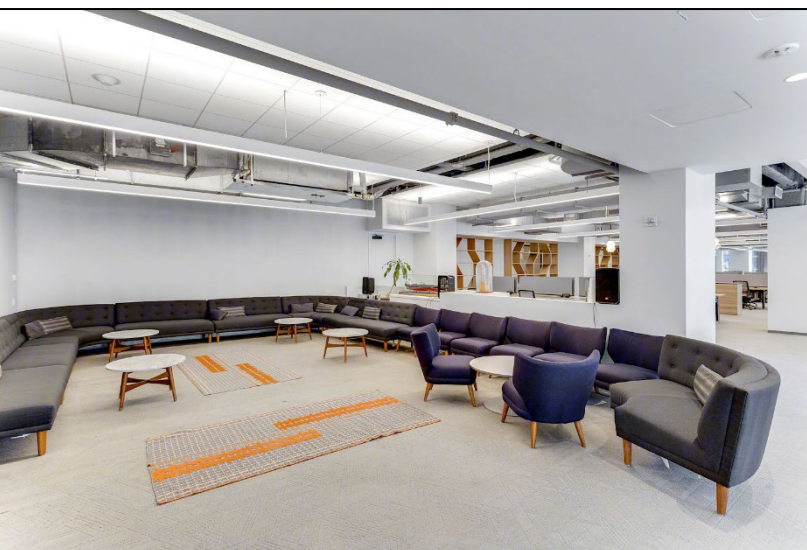
For Sublease



1633 Broadway

Partial 25th Floor - 23,140 RSF

Space Photos:



Robin Olinyk

+1 212 376 1231

Robin.Olinyk@jll.com

Clark Finney

+1 212 812 6505

Clark.Finney@jll.com

Dan Santagata

+1 212 812 5919

Dan.Santagata@jll.com

TJ Hochanadel

+1 212 812 5735

TJ.Hochanadel@jll.com

Rob Martin

+1 212 812 6435

Robert.Martin@jll.com

Although information has been obtained from sources deemed reliable, neither Owner nor JLL makes any guarantees, warranties or representations, express or implied, as to the completeness or accuracy as to the information contained herein. Any projections, opinions, assumptions or estimates used are for example only. There may be differences between projected and actual results, and those differences may be material. The Property may be withdrawn without notice. Neither Owner nor JLL accepts any liability for any loss or damage suffered by any party resulting from reliance on this information. If the recipient of this information has signed a confidentiality agreement regarding this matter, this information is subject to the terms of that agreement. ©2021 Jones Lang LaSalle IP, Inc. All rights reserved.

For Sublease



1633 Broadway

Partial 25th Floor - 23,140 RSF

Conference Space Photos:



Robin Olinyk

+1 212 376 1231

Robin.Olinyk@jll.com

Clark Finney

+1 212 812 6505

Clark.Finney@jll.com

Dan Santagata

+1 212 812 5919

Dan.Santagata@jll.com

TJ Hochanadel

+1 212 812 5735

TJ.Hochanadel@jll.com

Rob Martin

+1 212 812 6435

Robert.Martin@jll.com

Although information has been obtained from sources deemed reliable, neither Owner nor JLL makes any guarantees, warranties or representations, express or implied, as to the completeness or accuracy as to the information contained herein. Any projections, opinions, assumptions or estimates used are for example only. There may be differences between projected and actual results, and those differences may be material. The Property may be withdrawn without notice. Neither Owner nor JLL accepts any liability for any loss or damage suffered by any party resulting from reliance on this information. If the recipient of this information has signed a confidentiality agreement regarding this matter, this information is subject to the terms of that agreement. ©2021 Jones Lang LaSalle IP, Inc. All rights reserved.

For Sublease



1633 Broadway

Partial 25th Floor - 19,000 RSF

Building Photos:



Robin Olinyk

+1 212 376 1231

Robin.Olinyk@jll.com

Clark Finney

+1 212 812 6505

Clark.Finney@jll.com

Dan Santagata

+1 212 812 5919

Dan.Santagata@jll.com

TJ Hochanadel

+1 212 812 5735

TJ.Hochanadel@jll.com

Rob Martin

+1 212 812 6435

Robert.Martin@jll.com

Although information has been obtained from sources deemed reliable, neither Owner nor JLL makes any guarantees, warranties or representations, express or implied, as to the completeness or accuracy as to the information contained herein. Any projections, opinions, assumptions or estimates used are for example only. There may be differences between projected and actual results, and those differences may be material. The Property may be withdrawn without notice. Neither Owner nor JLL accepts any liability for any loss or damage suffered by any party resulting from reliance on this information. If the recipient of this information has signed a confidentiality agreement regarding this matter, this information is subject to the terms of that agreement. ©2021 Jones Lang LaSalle IP, Inc. All rights reserved.