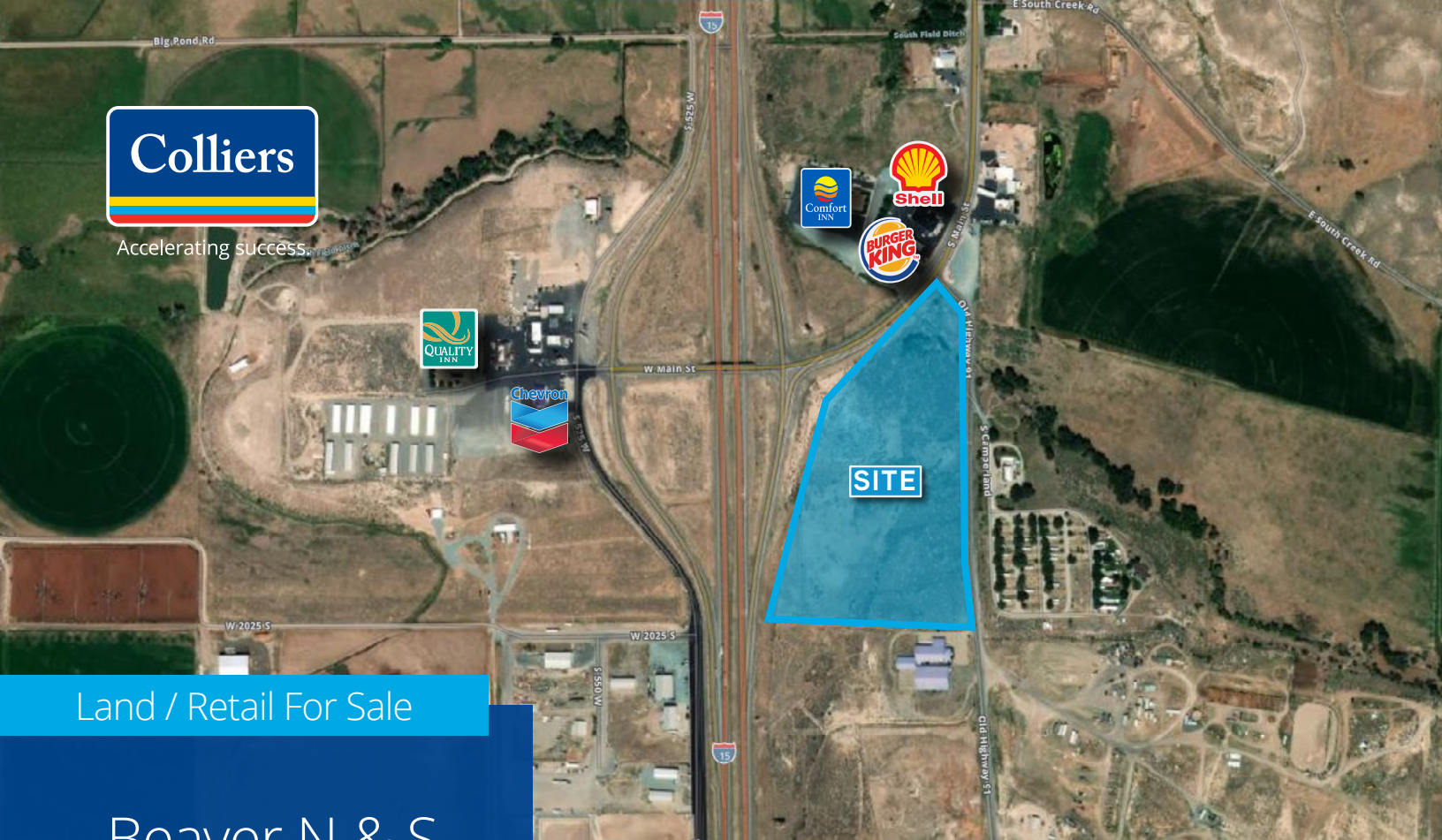




Accelerating success.



Land / Retail For Sale

Beaver N & S

Beaver, Utah 84713

Contact:

Ross McClintock
RWA, Associate
+1 801 666 4275
ross.mcclintock@colliers.com

2 - 8 acre Parcels

Property Details

- 2-8 acre parcels at the South I-15 off ramp in Beaver, Utah
- Parcels may be purchased together or seperately, all or part
- No gas stations allowed
- Seller financing is required
- Over 1500' of I-15 frontage
- Excellent I-15 visibility and on/off
- Pricing: \$4.30 per SF (\$1,500,000 per each 8 acre parcel)
- I-15 Traffic Counts: 21,000

Colliers
2100 Pleasant Grove Blvd. | Suite 200
Pleasant Grove, UT 84062
Main: +1 801 947 8300
colliers.com



This document has been prepared by Colliers International for advertising and general information only. Colliers International makes no guarantees, representations or warranties of any kind, expressed or implied, regarding the information including, but not limited to, warranties of content, accuracy and reliability. Any interested party should undertake their own inquiries as to the accuracy of the information. Colliers International excludes unequivocally all inferred or implied terms, conditions and warranties arising out of this document and excludes all liability for loss and damages arising there from. This publication is the copyrighted property of Colliers International and/or its licensor(s). ©2021. All rights reserved.