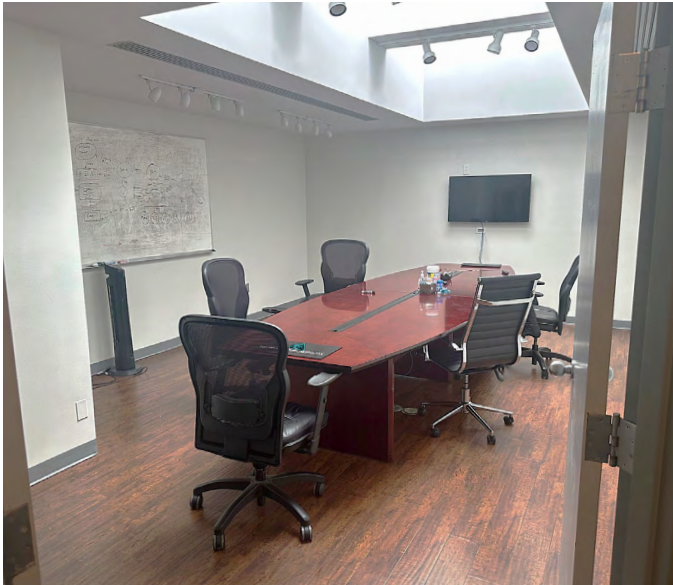
 **JLL** SEE A BRIGHTER WAY

For Lease

218 Jackson Street
Maitland, FL 32751

5,315 SF available

218 Jackson Street / Maitland, FL



218 Jackson Street / Maitland, FL



5,315 RSF available (second floor)



Starbucks, banks, city hall, restaurants, museums and more within walking distance



The property is located in downtown pedestrian-friendly Maitland



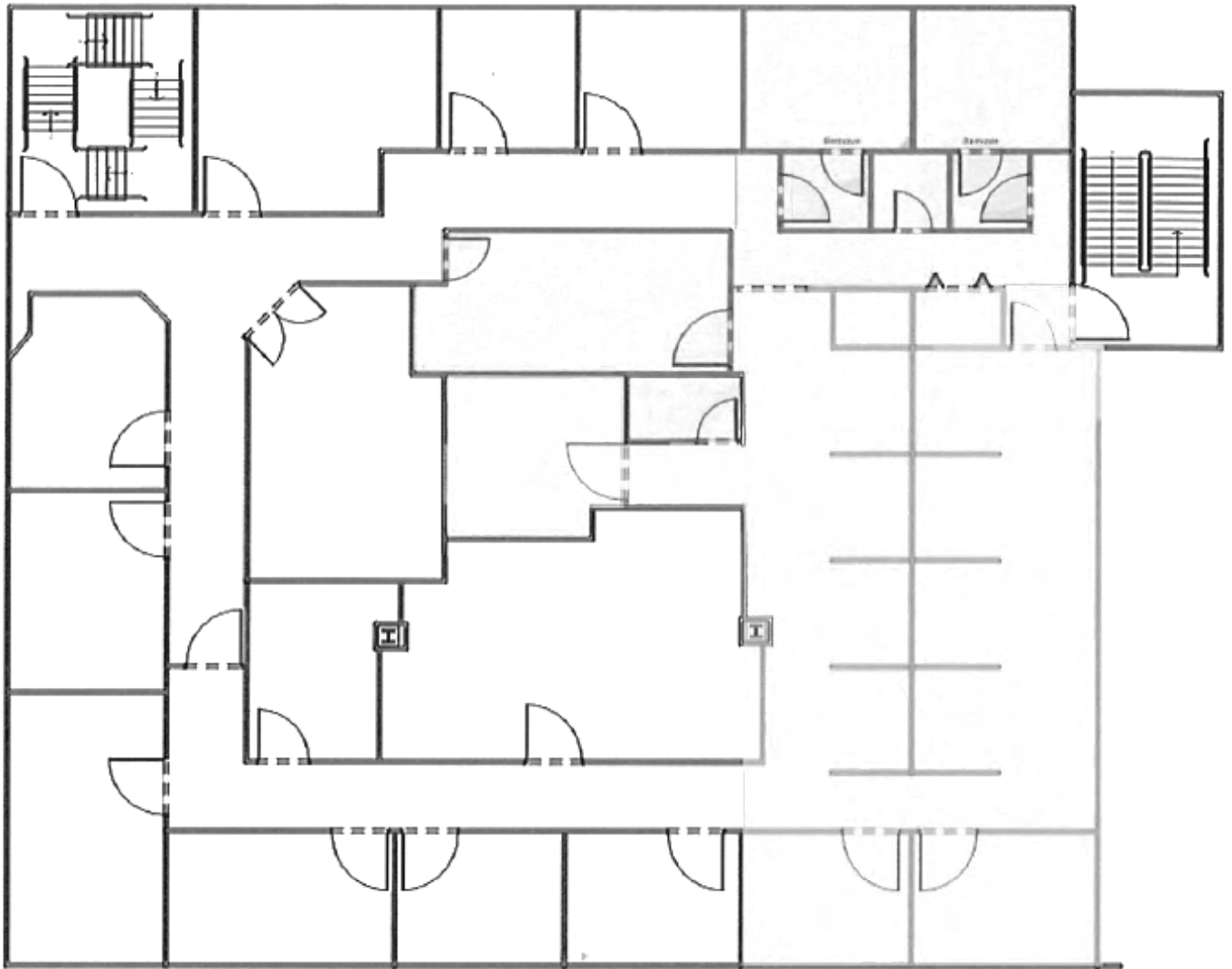
Lease rate \$22.50 FSG



YearBuilt: 1989



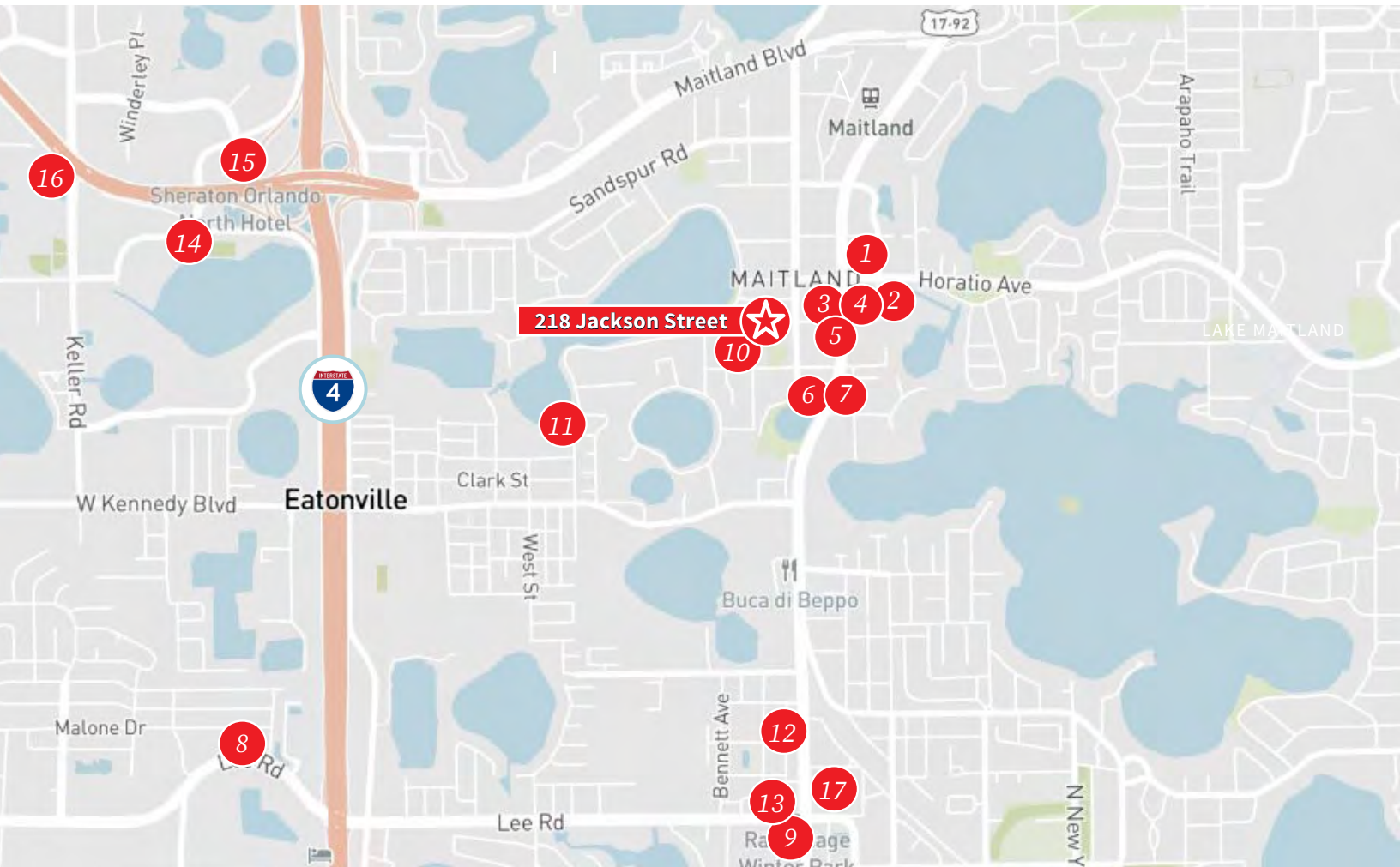
Available immediately



Second floor

Maitland

The City of Maitland is a premier suburban community of Orlando. Located conveniently off of I-4 and just 7 miles from downtown Orlando, Maitland offers the benefits of a larger metro with access to amenities. Employees benefit from easy access to area retail, restaurant and service amenities in addition to variety housing options in the surrounding area.



1. *Maitland Plaza*
2. *Foxtail Coffee Co.*
3. *Starbucks*
4. *McDonald's*
5. *Firehouse Subs*
6. *Antonio's Italian*
7. *Luke's Kitchen & Bar*
8. *Christner's Prime Steak & Lobster*
9. *Fleming's Prime Steakhouse*
10. *Art & History Museums of Maitland*
11. *Audubon Center*
12. *SpringHill Suites - Winter Park*
13. *Hilton Garden Inn - Winter Park*
14. *Homewood Suites - Orlando/Maitland*
15. *Sheraton - Orlando North*
16. *Courtyard Hotel - Orlando/Altamonte Springs*
17. *Winter Park Square*
(Nordstrom Rack, Sephora, Whole Foods)

Area Amenities



Jamie Barati
Senior Vice President
407-930-1803
jamie.barati@jll.com

John Worrell
Senior Vice President
321-684-9240
john.worrell@jll.com