

OFFICE FOR LEASE

201 W 5th Street | Austin, Texas 78701

5th & Colorado



FOR MORE INFORMATION

JEFF HENLEY

JEFF HENLEY, JR.

JACK PUTMAN

jhenley@riverside-re.com
512.413.5601

jrhenley@riverside-re.com
512.415.4066

jputman@riverside-re.com
512.965.7217

 RIVERSIDE

OFFICE FOR LEASE

201 W 5th Street | Austin, Texas 78701



COMING SOON
BUILDING UPDATES & SPEC SUITES

Highly desirable and walkable Downtown location with easy access to restaurants, entertainment venues, amenities, and Lady Bird Lake Trail

- Renovated Fitness Center & Showers
- New Tenant Lounge & Coffee Bar
- Green & LEED Certified
- On-Site Management & Security

FOR MORE INFORMATION

JEFF HENLEY

JEFF HENLEY, JR.

JACK PUTMAN

jhenley@riverside-re.com
512.413.5601

jrhenley@riverside-re.com
512.415.4066

jputman@riverside-re.com
512.965.7217

 RIVERSIDE

OFFICE FOR LEASE

201 W 5th Street | Austin, Texas 78701



5th & Colorado

Please Inquire for Rates

LEVEL 12

Suite 1200 - 6,251 SF

LEVEL 13

Suite 1350 - 4,965 SF

LEVEL 14

Suite 1400 - 9,087 SF*

Suite 1425 - 3,475 SF*

**Suites may be combined for a total of 12,562 RSF.*

LEVEL 15

Suite 1500 - 5,000 - 12,654 SF

LEVEL 17

Suite 1700 - 10,000 - 19,087 SF

LEVEL 18

Suite 1800 - 10,000 - 19,087 SF

FOR MORE INFORMATION

JEFF HENLEY

JEFF HENLEY, JR.

JACK PUTMAN

jhenley@riverside-re.com
512.413.5601

jrhenley@riverside-re.com
512.415.4066

jputman@riverside-re.com
512.965.7217

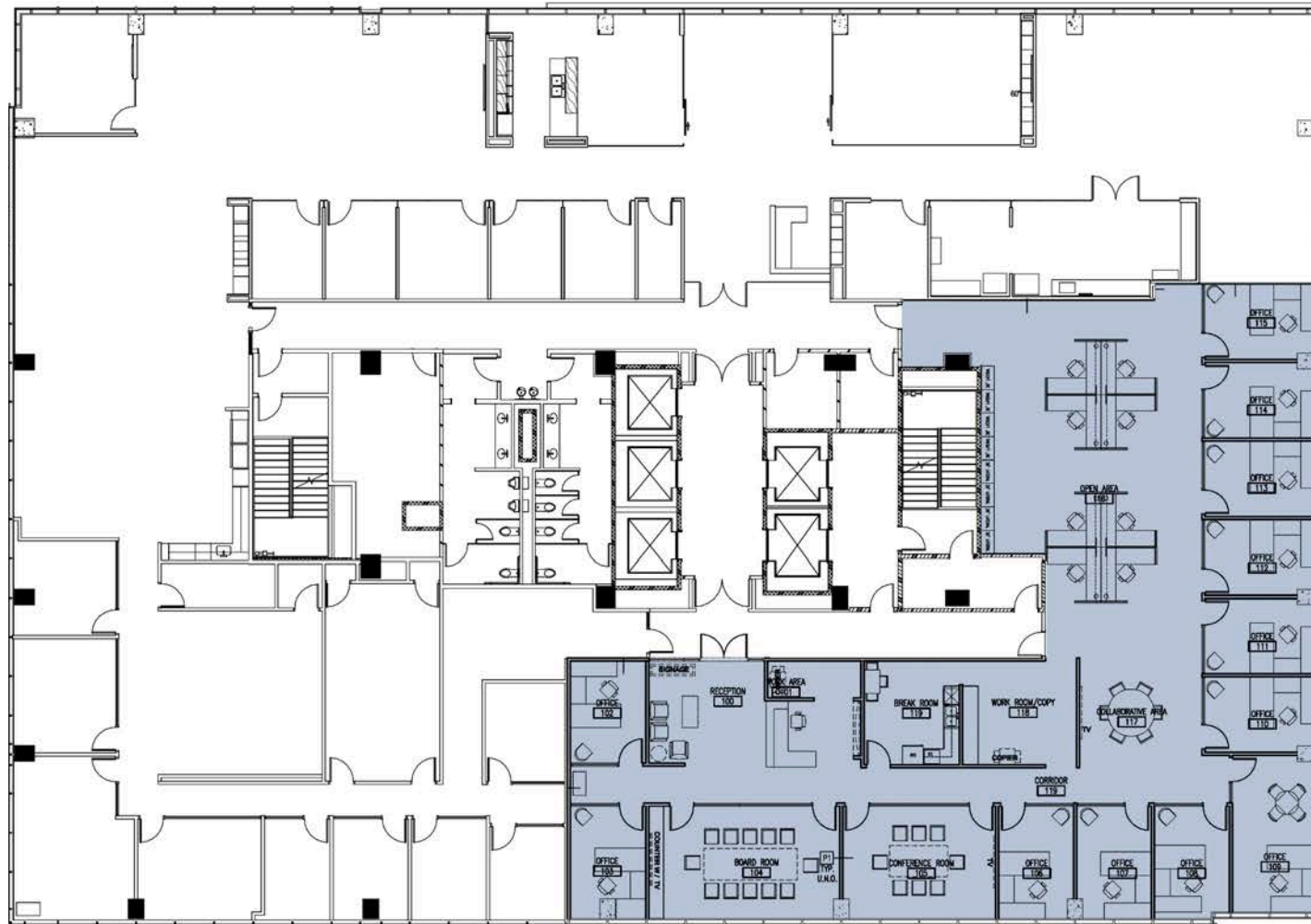
 RIVERSIDE

OFFICE FOR LEASE

201 W 5th Street | Austin, Texas 78701

SUITE 1200 | 6,251 RSF

Level 12



FOR MORE INFORMATION

JEFF HENLEY

JEFF HENLEY, JR.

JACK PUTMAN

jhenley@riverside-re.com
512.413.5601

jrhenley@riverside-re.com
512.415.4066

jputman@riverside-re.com
512.965.7217

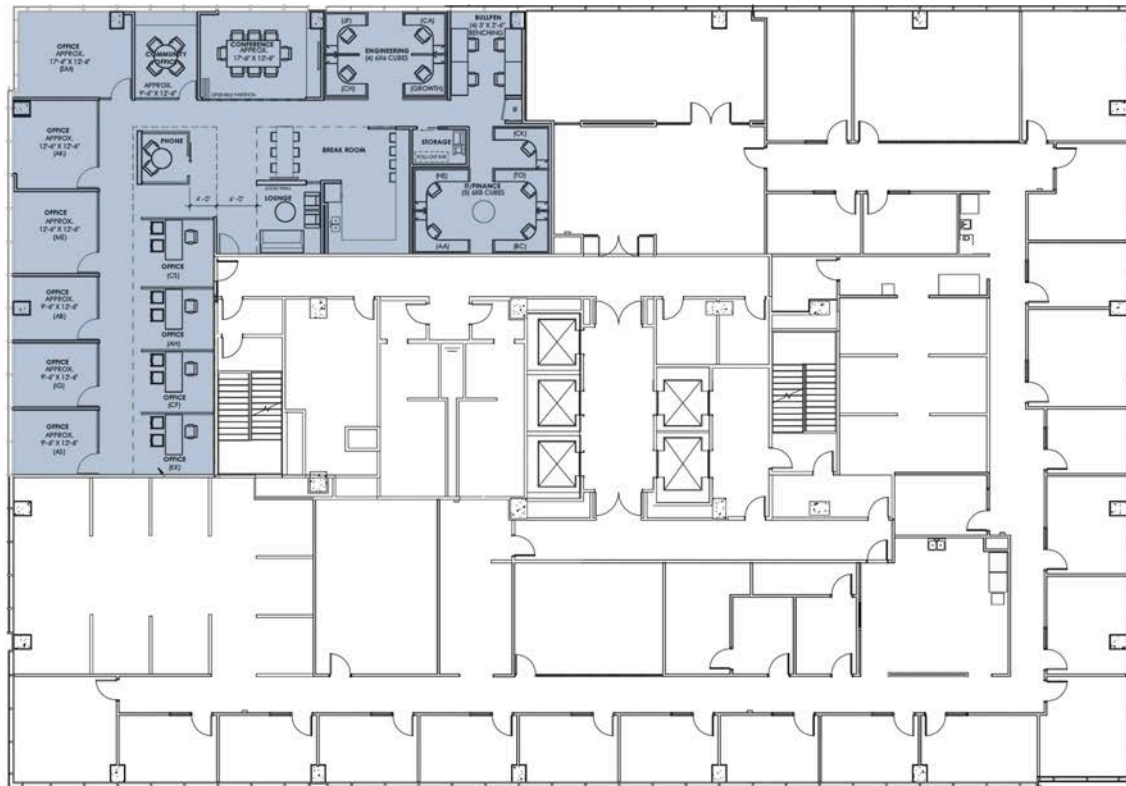
 RIVERSIDE

OFFICE FOR LEASE

201 W 5th Street | Austin, Texas 78701

SUITE 1350 | 4,965 RSF

Level 13



FOR MORE INFORMATION

JEFF HENLEY

JEFF HENLEY, JR.

JACK PUTMAN

 RIVERSIDE

jhenley@riverside-re.com
512.413.5601

jrhenley@riverside-re.com
512.415.4066

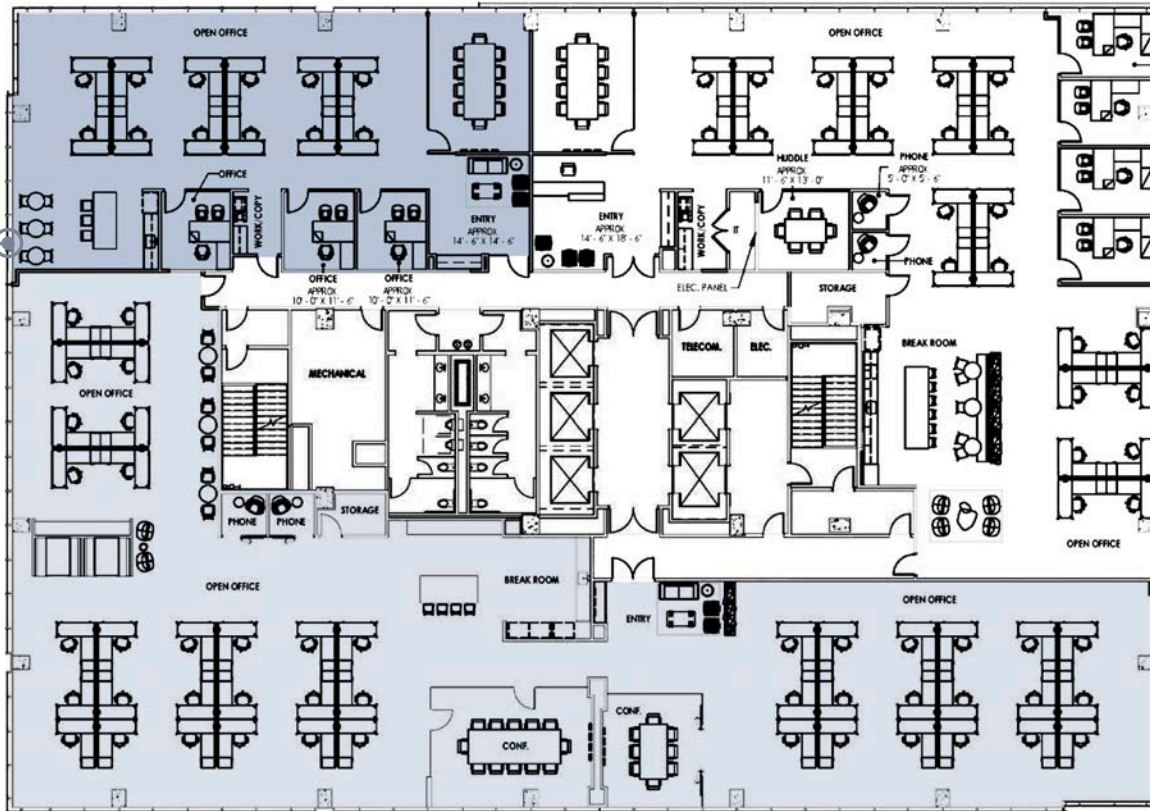
jputman@riverside-re.com
512.965.7217

SUITES 1400 & 425 MAY BE COMBINED FOR A TOTAL OF 12,562 SF.

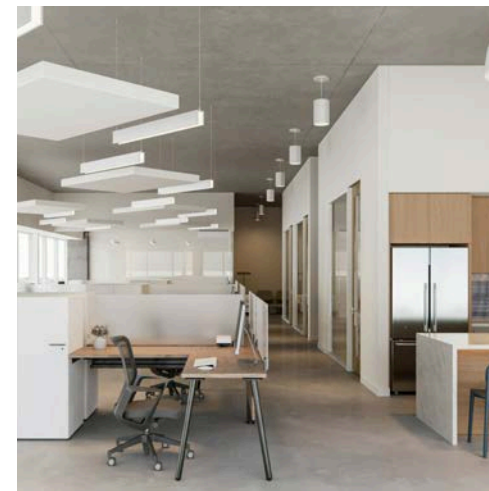
Level 14

SUITE 1425
3,475 RSF

SPEC SUITE
WITH NEW FINISHES



SUITE 1400
9,087 RSF



FOR MORE INFORMATION

JEFF HENLEY

JEFF HENLEY, JR.

JACK PUTMAN

jhenley@riverside-re.com
512.413.5601

jrhenley@riverside-re.com
512.415.4066

jputman@riverside-re.com
512.965.7217

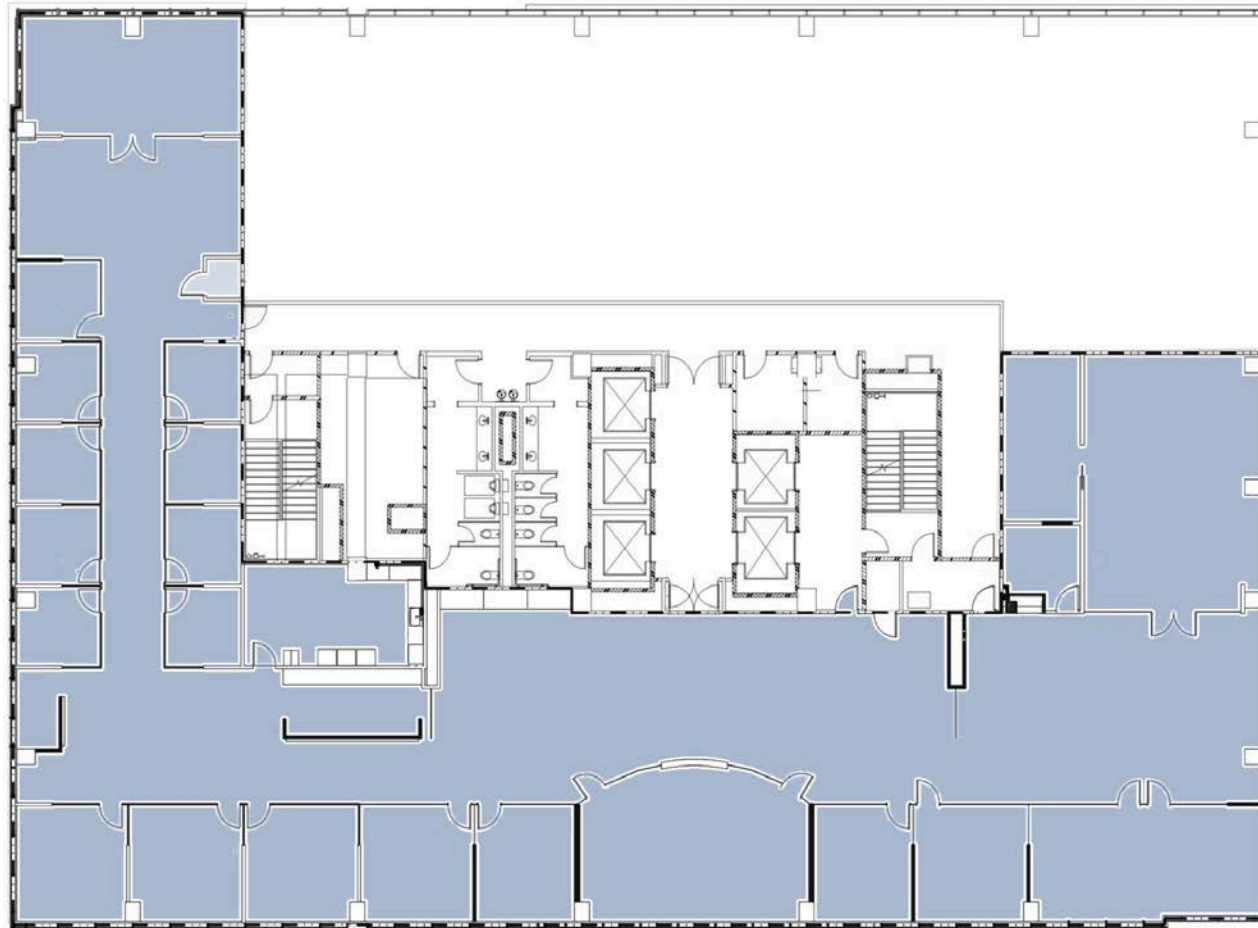


OFFICE FOR LEASE

201 W 5th Street | Austin, Texas 78701

SUITE 1500 | 5,000 - 12,654 RSF

Level 15



FOR MORE INFORMATION

JEFF HENLEY

JEFF HENLEY, JR.

JACK PUTMAN

jhenley@riverside-re.com
512.413.5601

jrhenley@riverside-re.com
512.415.4066

jputman@riverside-re.com
512.965.7217

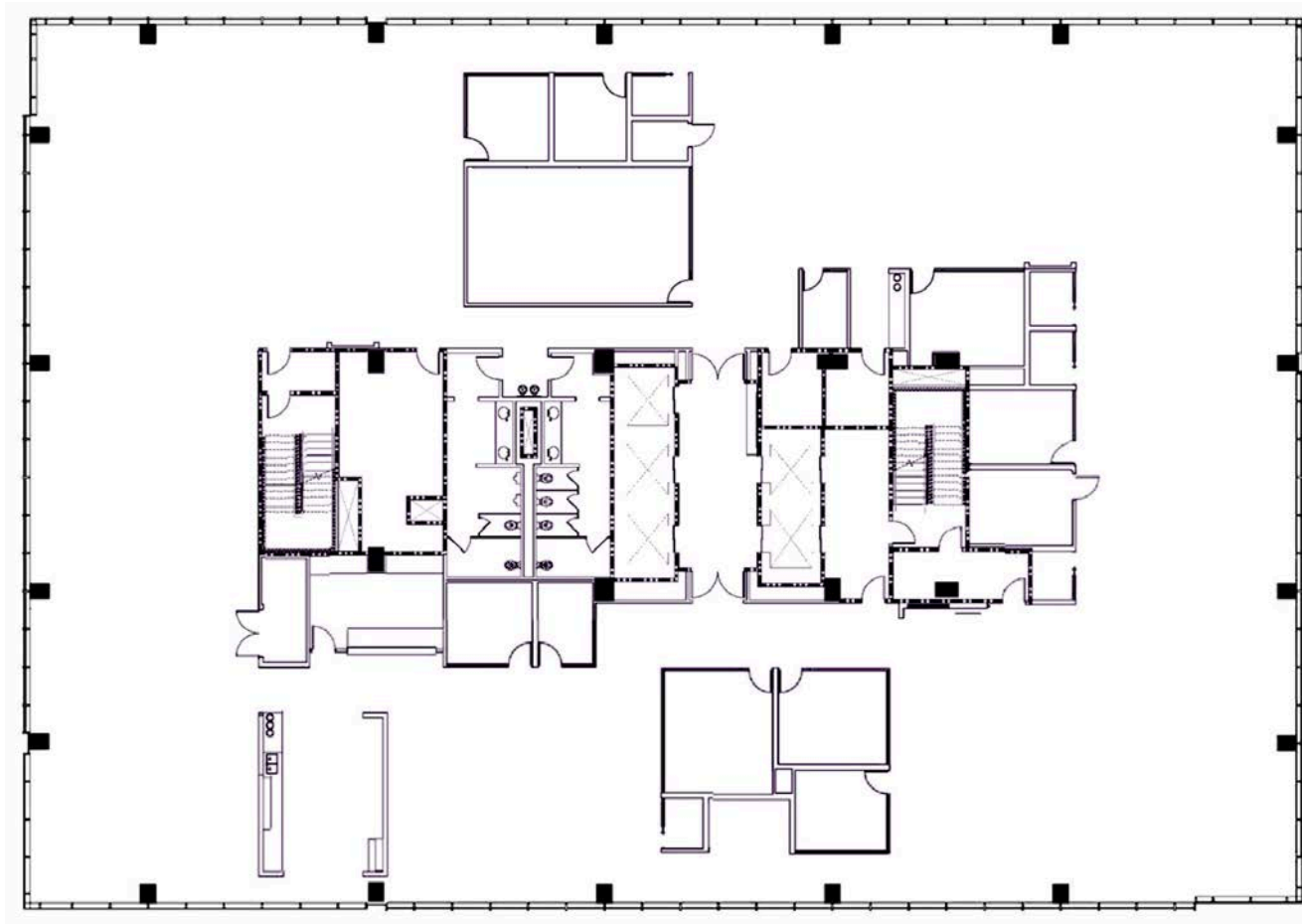
 RIVERSIDE

OFFICE FOR LEASE

201 W 5th Street | Austin, Texas 78701

SUITE 1700 | 10,000 - 19,087 RSF

Level 17



FOR MORE INFORMATION

JEFF HENLEY

JEFF HENLEY, JR.

JACK PUTMAN

jhenley@riverside-re.com
512.413.5601

jrhenley@riverside-re.com
512.415.4066

jputman@riverside-re.com
512.965.7217

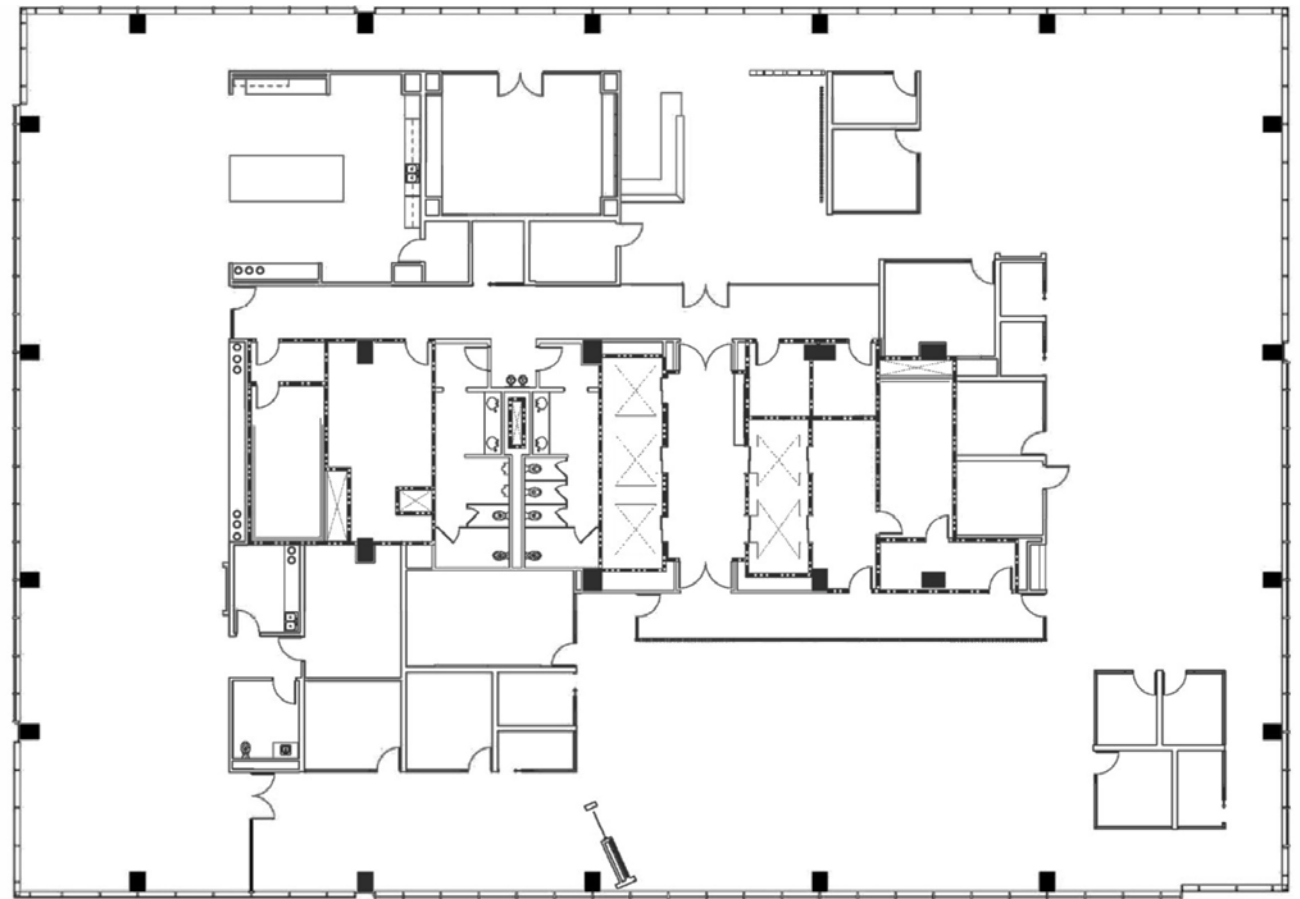
 RIVERSIDE

OFFICE FOR LEASE

201 W 5th Street | Austin, Texas 78701

SUITE 1800 | 10,000 - 19,087 RSF

Level 18



FOR MORE INFORMATION

JEFF HENLEY

JEFF HENLEY, JR.

JACK PUTMAN



jhenley@riverside-re.com
512.413.5601

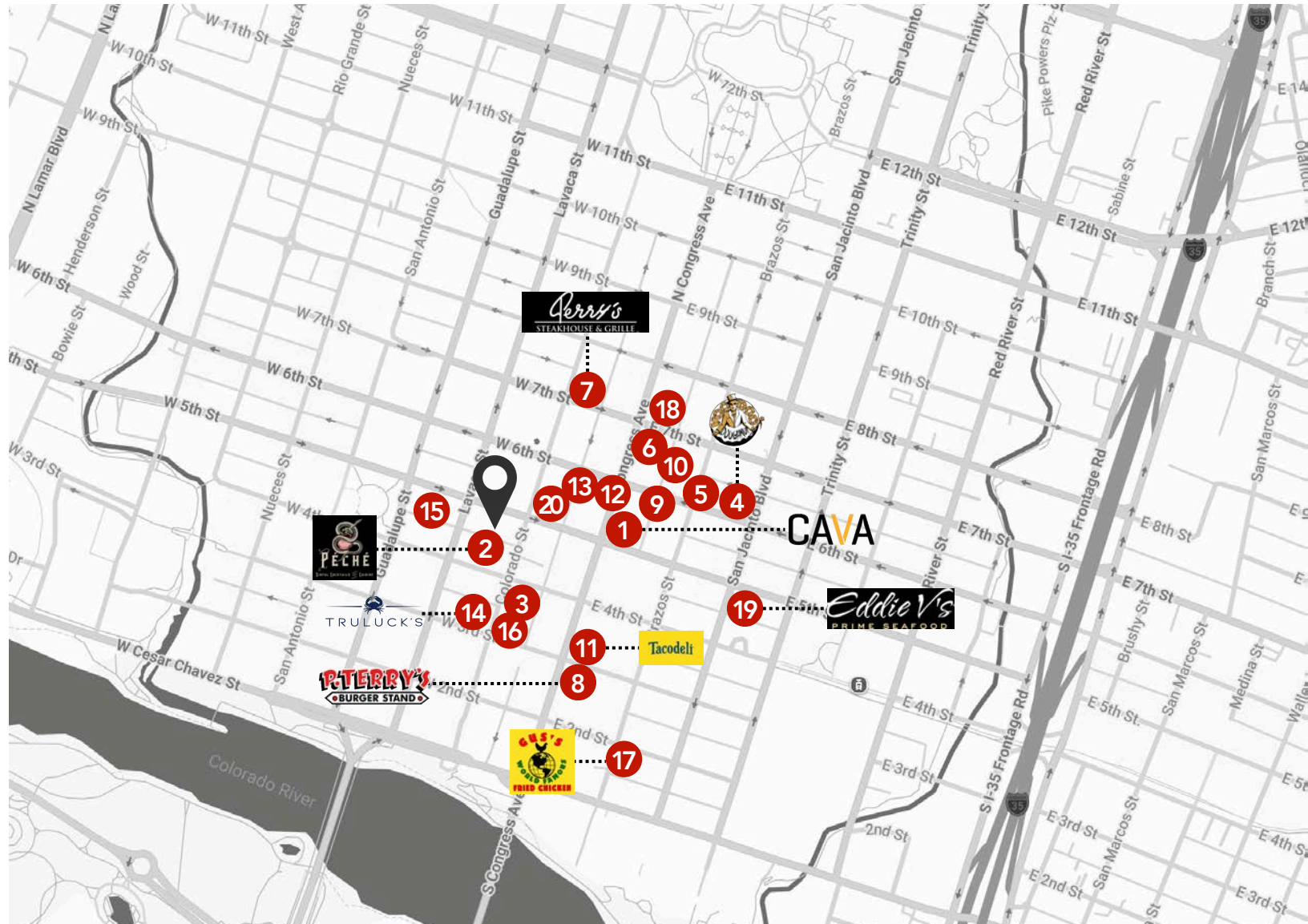
jrhenley@riverside-re.com
512.415.4066

jputman@riverside-re.com
512.965.7217

OFFICE FOR LEASE

201 W 5th Street | Austin, Texas 78701

- 1 CAVA
- 2 Peche
- 3 The Capital Grille
- 4 Voodoo Doughnuts
- 5 Eureka!
- 6 Caroline
- 7 Perry's Steakhouse
- 8 Cooper's Old Time BBQ
- 9 P. Terry's Burger Stand
- 10 The Driskill Bar
- 11 Tacodeli
- 12 Punch Bowl Social
- 13 Ruth Chris Steakhouse
- 14 Truluck's Seafood
- 15 The Roosevelt Room
- 16 Red Ash
- 17 Gus's Fried Chicken
- 18 Roaring Fork
- 19 Eddie V's Prime Seafood
- 20 Comedor



FOR MORE INFORMATION

JEFF HENLEY

JEFF HENLEY, JR.

JACK PUTMAN

jhenley@riverside-re.com
512.413.5601

jrhenley@riverside-re.com
512.415.4066

jputman@riverside-re.com
512.965.7217



Contact

OFFICE FOR LEASE

201 W 5th Street | Austin, Texas 78701

JEFF HENLEY

jhenley@riverside-re.com

512.333.7000

JEFF HENLEY, JR.

jrhenley@riverside-re.com

512.333.7000

JACK PUTMAN

jputman@riverside-re.com

512.965.7217

