

---

## Executive Office Suites Now Available 1871 NW Gilman Blvd., Issaquah



### Neighborhood Amenities

- 20 minutes to Seattle, 15 minutes to Bellevue, 5 minutes to Trails
- Located at the Gateway to Issaquah at I-90 Exit 15
- Excellent access via SR 900, Gilman Blvd and I-90 with 128,000 vehicles per day
- Adjacent to Issaquah Transit Center
- Walking distance to restaurants, banks, retail and fitness options

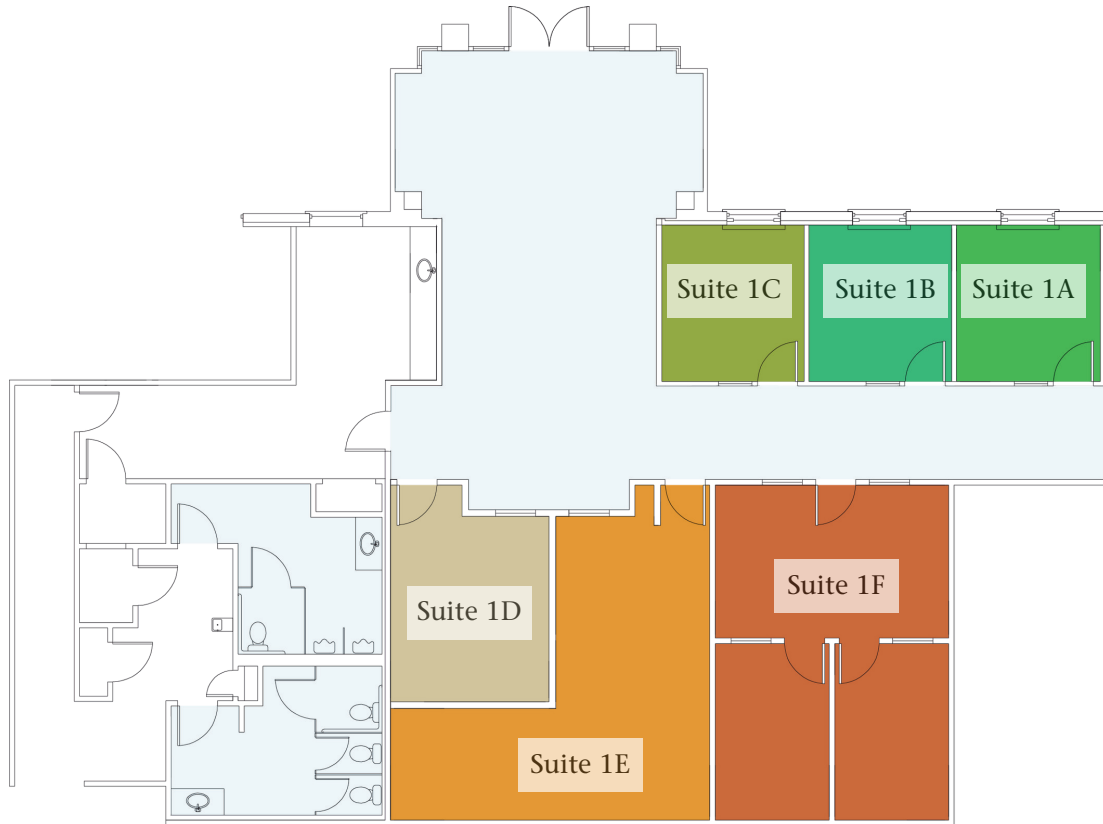
### Features







- Access to reception area and restrooms
- High-Speed Internet Ready
- Large Windows Provide Natural Light and View of Mountains (Select units)
- Ample Parking
- Bike Storage

### Location

- Suites ranging from 253 sf to 2,774 sf
- Various size office spaces available on month-to-month basis
- Located 1 block West of SR900, on Gilman Blvd.

## Suite 1 Floor Plan



Suite	Rentable SF
 Suite 1A	255
 Suite 1B	253
 Suite 1C	253
 Suite 1D	359
 Suite 1E	767
 Suite 1F	887

**Total 2,774**

All suites available on month-to-month basis. 60 days notice is required. Tenants share access to the reception area and restrooms. Square footages are approximate.