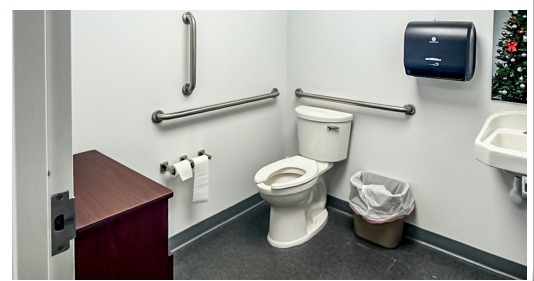


ANOTHER EXCLUSIVE LEASING OPPORTUNITY FROM G/M PROPERTY GROUP!

OFFICE SPACE FOR LEASE @ THE HAYWOOD OFFICE PARK



13 Haywood Office Park • Suite 107 • 2,633 SF • \$23.00/ft MG



G/M PROPERTY GROUP, LLC

YOUR COMMERCIAL
REAL ESTATE EXPERTS

WWW.GMPROPERTY.COM

- Located in the desirable Haywood Office Park
- Great visibility, ample parking and highway signage
- Modified gross – Tenant to pay TICAM, Landlord to pay utilities
- Multiple configuration and layout options
- Neighboring office park tenants include EmergeOrtho, State of North Carolina, Rockcliff Oral Surgery, LHC Home Healthcare and Comprehensive Pain Consultants

FOR MORE INFORMATION CALL KEATON EDWARDS AT 828.774.5191

FOR LEASE: CLASS A OFFICE SPACE LOCATED IN HAYWOOD OFFICE PARK



**Lake
Janaluska**

Crabtree Road

SUBJECT



Keaton Edwards
kedwards@gmproperty.com

FOR MORE INFORMATION

Please contact Keaton Edwards at G/M Property Group, LLC



G/M PROPERTY GROUP, LLC
P.O. Box 18723
Asheville, NC 28814
(828) 281-4024



G/M PROPERTY GROUP, LLC

YOUR COMMERCIAL
REAL ESTATE EXPERTS

WWW.GMPROPERTY.COM