



# BOURBON LOGISTICS CENTER 7

3012 Preston Highway, Shepherdsville, Kentucky



---

LEASING AGENT



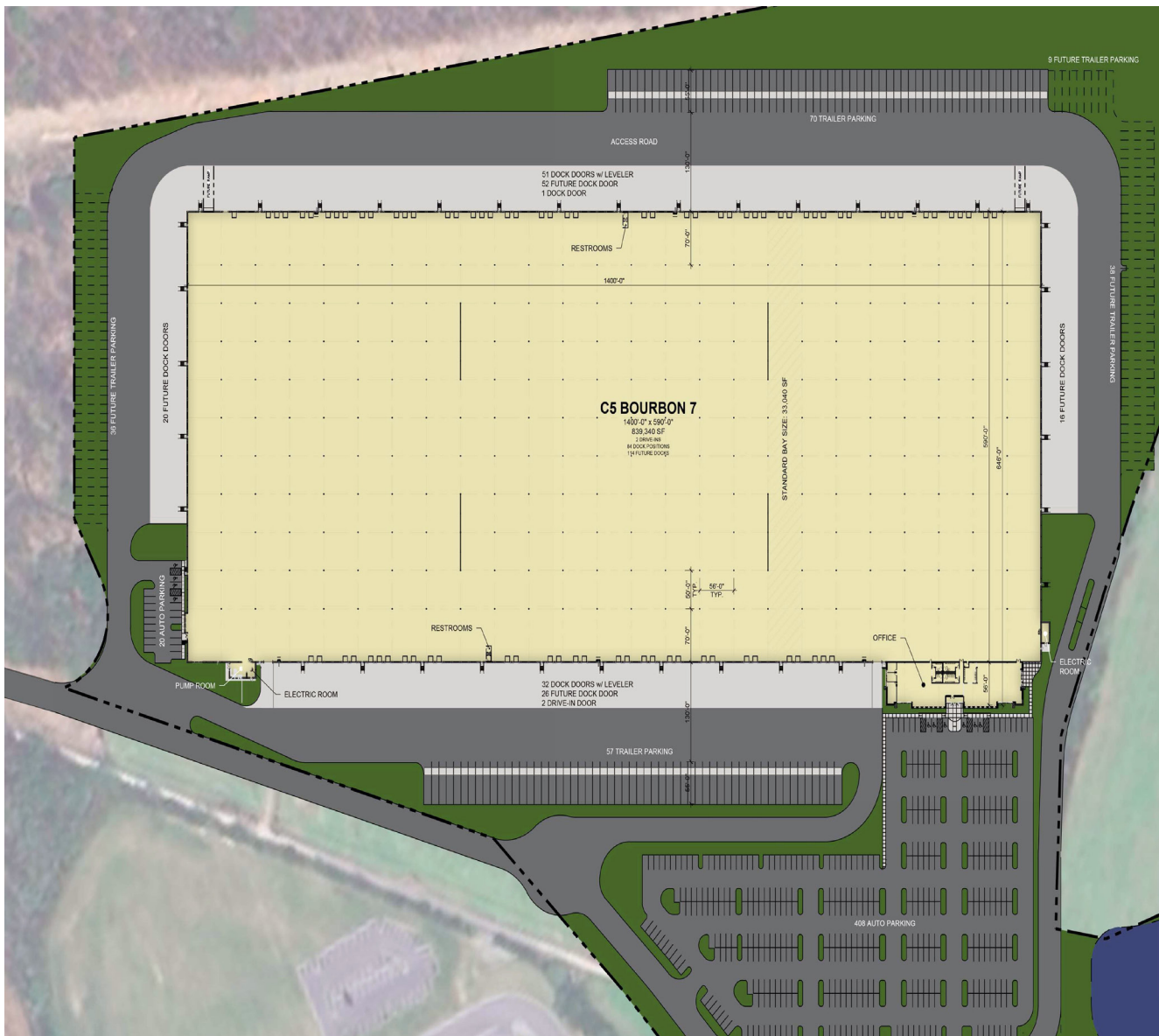
---

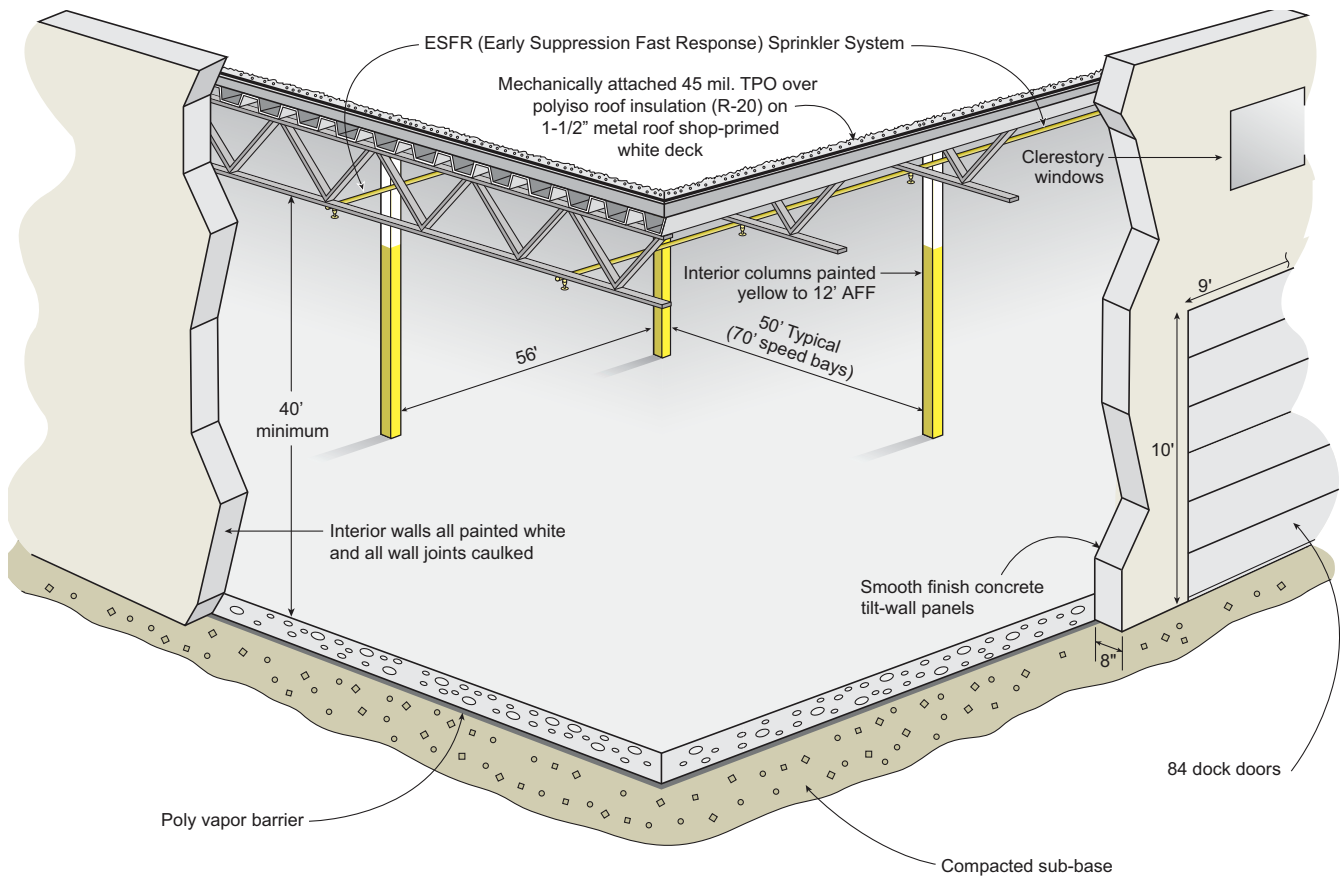
DEVELOPER

# BOURBON LOGISTICS CENTER 7

Shepherdsville, Kentucky

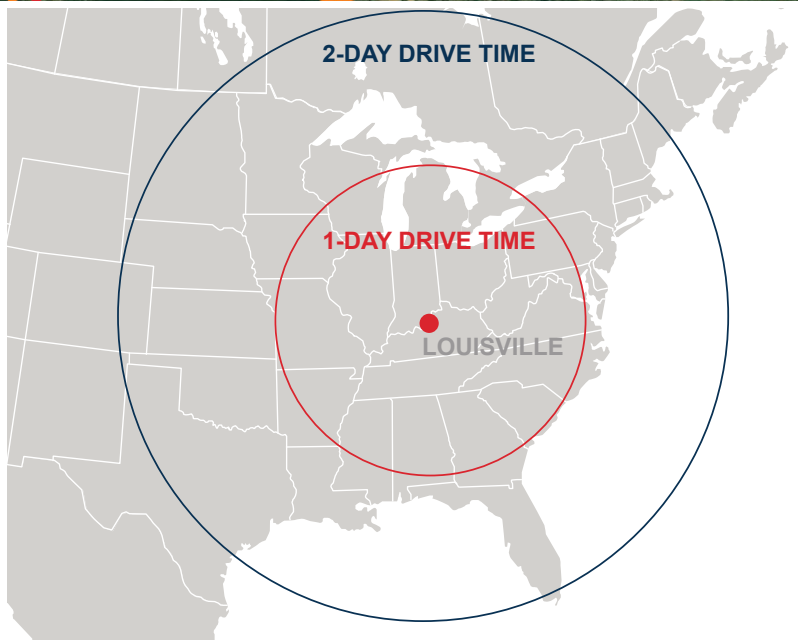
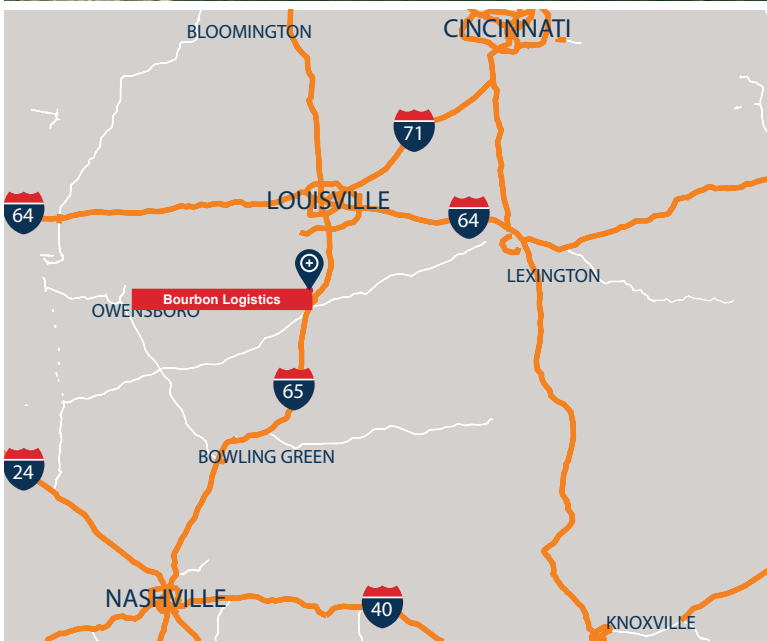
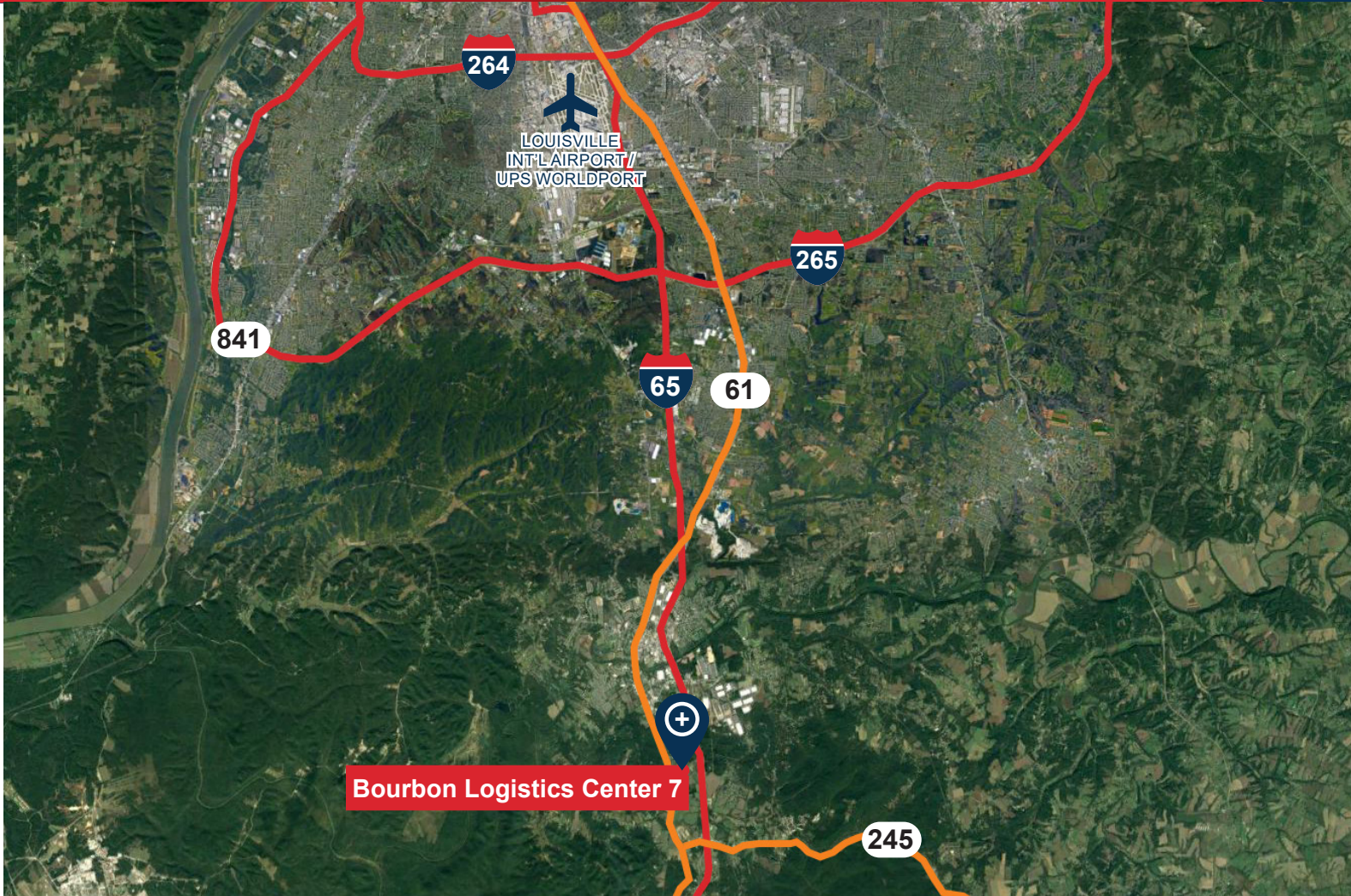
Bourbon Logistics Center 7 is positioned one-half mile from I-65 at Ohm Drive in Shepherdsville, Kentucky. The location provides superior access to multiple markets. UPS Worldport is 15 miles from the site, providing strategic logistics opportunities to the end-user.





## BUILDING SPECIFICATIONS - BOURBON 7

Square Footage	839,340 SF
Office Area	12,000 SF
Site Area	60 acres
Column Spacing	50' wd x 56' dp (typical) with 70' speed bays
Clear Height	40'
Dock Doors	84 (expandable)
Drive-In Doors	2
Truck Court Depth	185'
Power	6000 Amp, 227/480 Volt, 3 Phase
Auto Parking	468 spaces (expandable)
Trailer Storage	210
Lighting	LED
Sprinkler	ESFR sprinkler system



**Anthony Armbruster**  
 Investment Analyst  
 O 859.287.3705  
 aarmbruster@c5ip.com



**Powell Spears, SIOR**  
 Senior Managing Director  
 O 502.394.2509  
 C 502.419.7391  
 powell.spears@jll.com

**Matt Hartlage, SIOR**  
 Senior Managing Director  
 O 502.394.2517  
 C 502.807.5339  
 matt.hartlage@jll.com