



WESTCHASE CORPORATE PARK

11201-11331 RICHMOND AVE



DAN MEYER

danmeyer@mcmmanagement.com

meyercarrington.com

O: 713-668-2369

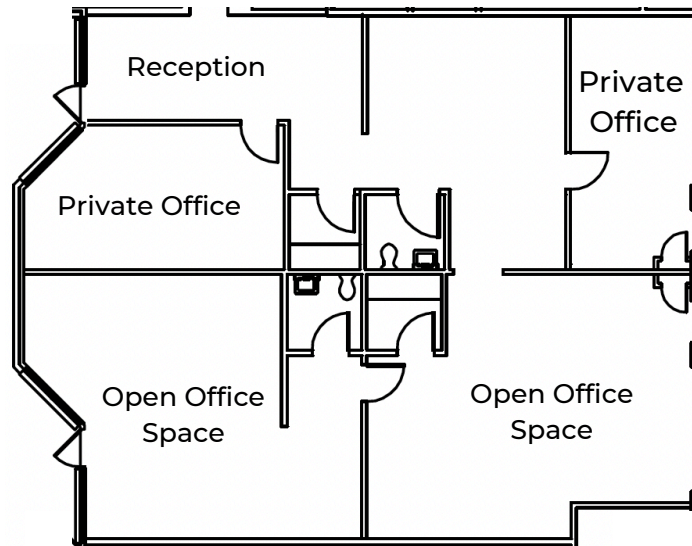
C: 713-806-8940

MEYER CARRINGTON



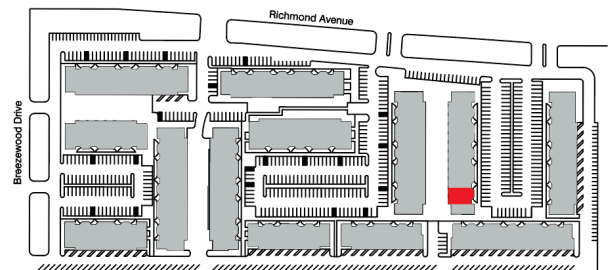
**SUITE
C101-102**
2,966 SF

11221 RICHMOND AVE



Suite Layout

- 2,966 SF of office space
- Private office, and two private restrooms
- Large open workspace
- Tenant controlled HVAC
- Drive up access
- Conveniently located with direct access to Beltway 8 and Westpark Tollway



DAN MEYER

danmeyer@mcmanagement.com

meyercarrington.com

O: 713-668-2369

C: 713-806-8940

MEYER CARRINGTON