

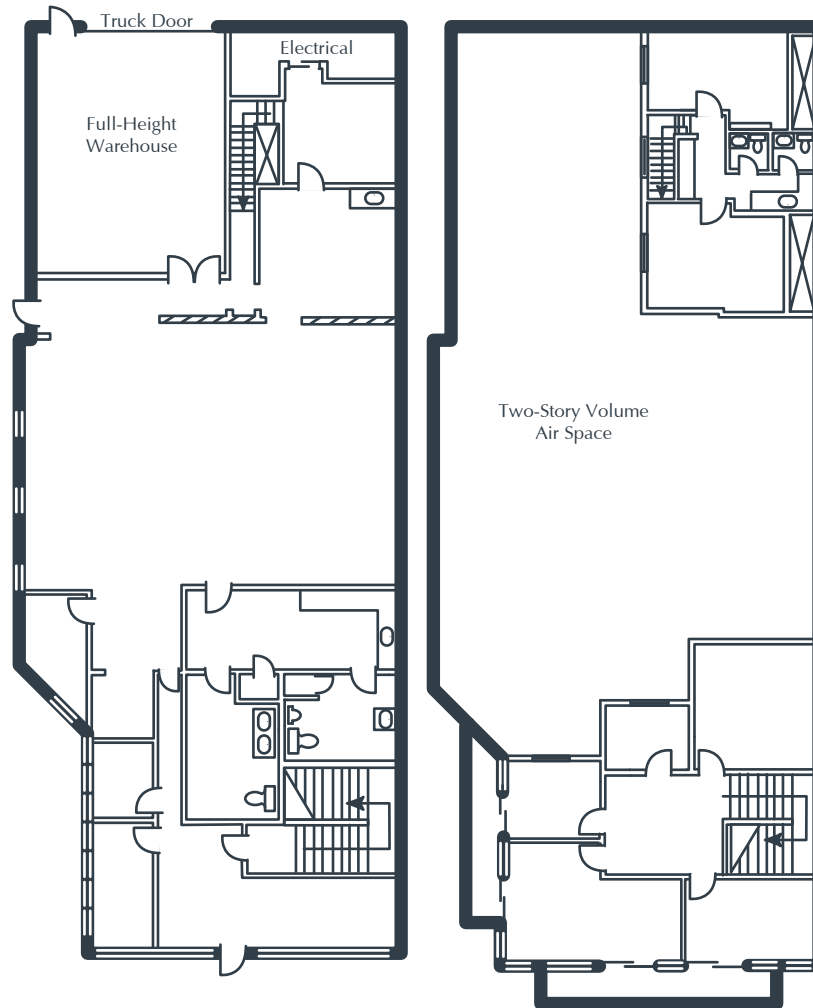
MACARTHUR MAIN BUSINESS CENTER

1929 Main Street, Suite 101
Irvine, CA

8,467 Square Feet

\$1.69 SF/MO

Triple Net



NOTES

- Reception
- 6 Window Offices
- 4 Interior Offices
- 4 Restrooms
- Kitchen
- 4 Storage Closets
- Open Work Area
- Ground-Level Truck Door
- Approximately 880 sq. ft. of Full-Height Warehouse
- Part of a Professionally Managed Business Park

Created by Olen Commercial Realty Corp., 2022.
Information is not to be published or copied without
written approval. Square footage and floor plans are
estimates and should be separately verified. All rates,
terms, floor plans, and building facts are subject to
change without notice.

ea 05.09.2024

MARIA MEYER
Senior Leasing Director
949.719.7215
mmeyer@olen.com



Seven Corporate Plaza
Newport Beach, CA
949.644.6536
www.olen.com