

LAND FOR SALE

0 KY 1039

Sparta, KY 41083



PROPERTY DESCRIPTION

38+ acres zoned industrial for sale, property is also listed split into two and is listed as residential in the MLS. Rolling land is mostly cleared. A driveway is located on the property for parking multiple cars during showings.

PROPERTY HIGHLIGHTS

- Prime location in Gallatin County
- Spacious and versatile land
- Scenic and tranquil surroundings

OFFERING SUMMARY

Sale Price:	\$490,000
Lot Size:	38.16 Acres

DEMOGRAPHICS	0.25 MILES	0.5 MILES	1 MILE
Total Households	3	18	76
Total Population	12	54	223
Average HH Income	\$126,063	\$90,076	\$88,286

We obtained the information above from sources we believe to be reliable. However, we have not verified its accuracy and make no guarantee, warranty or representation about it. It is submitted subject to the possibility of errors, omissions, change of price, rental or other conditions, prior sale, lease or financing, or withdrawal without notice. We include projections, opinions, assumptions or estimates for example only, and they may not represent current or future performance of the property. You and your tax and legal advisors should conduct your own investigation of the property and transaction.

DERRICK PLUNKETT

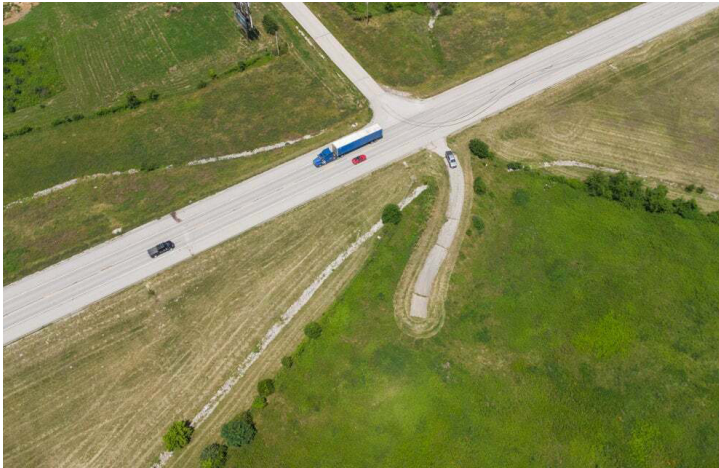
Commercial Senior Director
O: 859.620.5830
dp.kwcommercial@gmail.com

KW COMMERCIAL
7210 Turfway Road
Florence, KY 41042

LAND FOR SALE

0 KY 1039

Sparta, KY 41083



We obtained the information above from sources we believe to be reliable. However, we have not verified its accuracy and make no guarantee, warranty or representation about it. It is submitted subject to the possibility of errors, omissions, change of price, rental or other conditions, prior sale, lease or financing, or withdrawal without notice. We include projections, opinions, assumptions or estimates for example only, and they may not represent current or future performance of the property. You and your tax and legal advisors should conduct your own investigation of the property and transaction.

DERRICK PLUNKETT
Commercial Senior Director
O: 859.620.5830
dp.kwcommercial@gmail.com

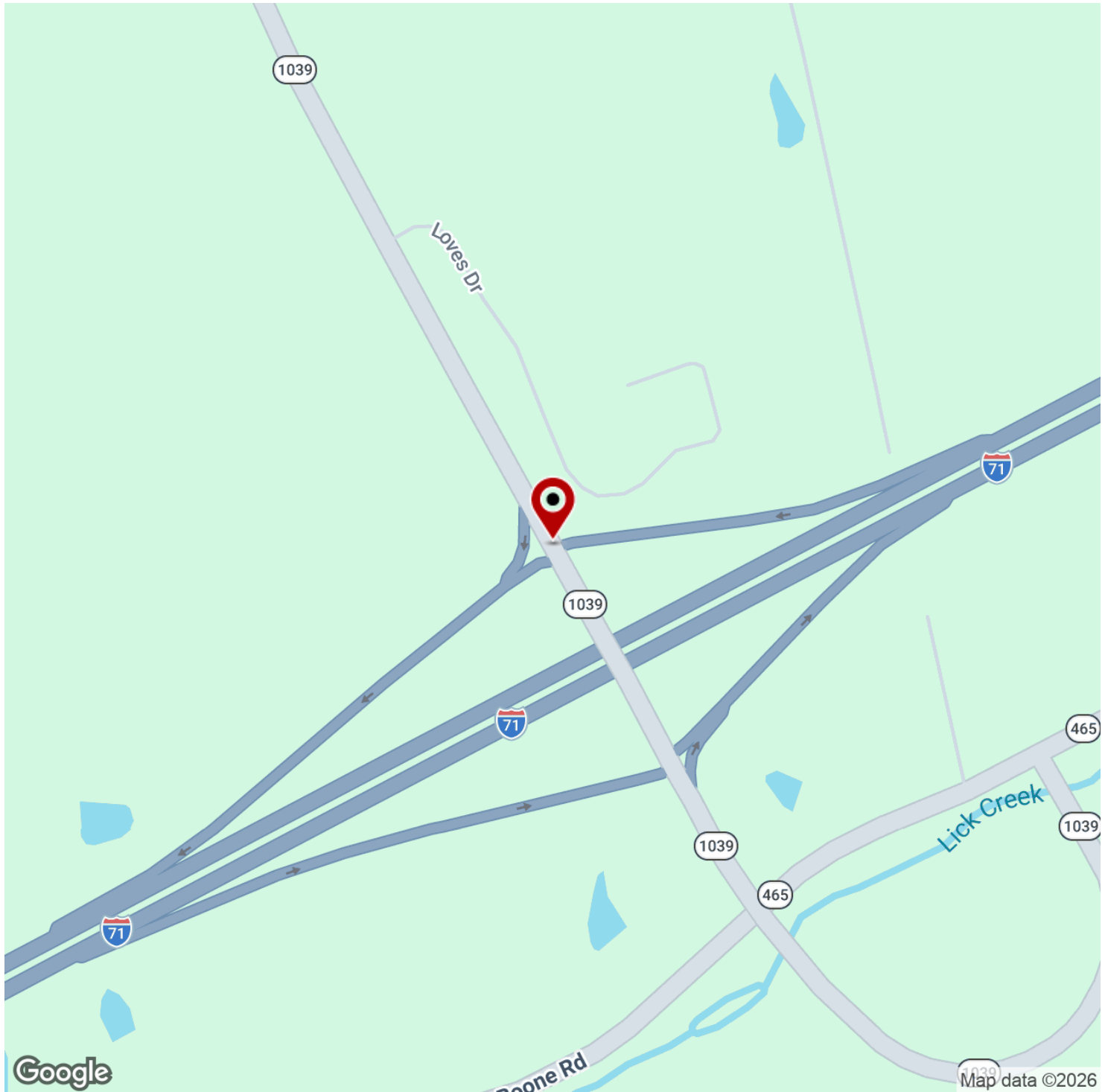
KW COMMERCIAL
7210 Turfway Road
Florence, KY 41042

Each Office Independently Owned and Operated kwcommercialagent.com

LAND FOR SALE

0 KY 1039

Sparta, KY 41083



We obtained the information above from sources we believe to be reliable. However, we have not verified its accuracy and make no guarantee, warranty or representation about it. It is submitted subject to the possibility of errors, omissions, change of price, rental or other conditions, prior sale, lease or financing, or withdrawal without notice. We include projections, opinions, assumptions or estimates for example only, and they may not represent current or future performance of the property. You and your tax and legal advisors should conduct your own investigation of the property and transaction.

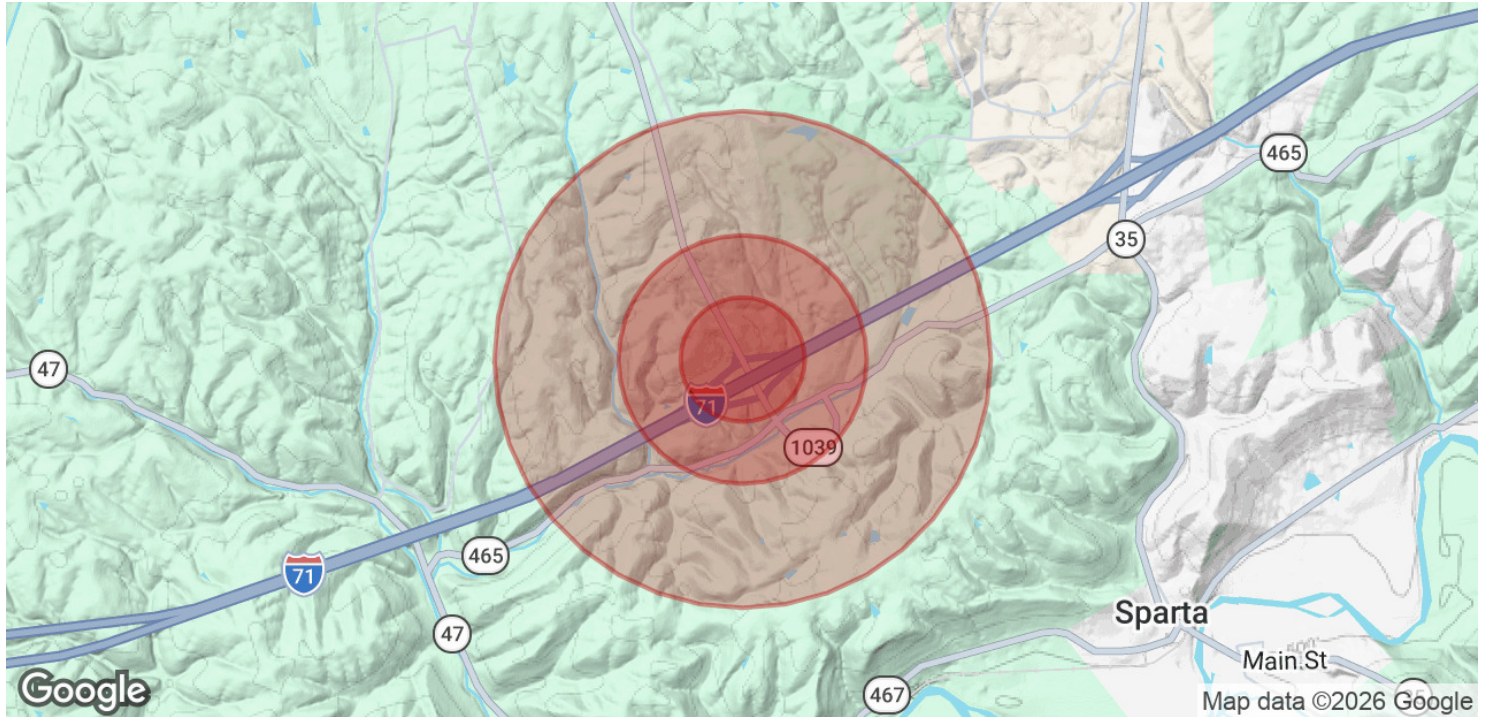
DERRICK PLUNKETT
Commercial Senior Director
O: 859.620.5830
dp.kwcommercial@gmail.com

KW COMMERCIAL
7210 Turfway Road
Florence, KY 41042

LAND FOR SALE

0 KY 1039

Sparta, KY 41083



POPULATION	0.25 MILES	0.5 MILES	1 MILE
Total Population	12	54	223
Average Age	37.6	35.7	35.7
Average Age (Male)	38.5	35.7	35.3
Average Age (Female)	38.0	36.3	36.5

HOUSEHOLDS & INCOME	0.25 MILES	0.5 MILES	1 MILE
Total Households	3	18	76
# of Persons per HH	4.0	3.0	2.9
Average HH Income	\$126,063	\$90,076	\$88,286
Average House Value	\$285,948	\$258,892	\$253,341

2023 American Community Survey (ACS)

We obtained the information above from sources we believe to be reliable. However, we have not verified its accuracy and make no guarantee, warranty or representation about it. It is submitted subject to the possibility of errors, omissions, change of price, rental or other conditions, prior sale, lease or financing, or withdrawal without notice. We include projections, opinions, assumptions or estimates for example only, and they may not represent current or future performance of the property. You and your tax and legal advisors should conduct your own investigation of the property and transaction.

DERRICK PLUNKETT
Commercial Senior Director
O: 859.620.5830
dp.kwcommercial@gmail.com

KW COMMERCIAL
7210 Turfway Road
Florence, KY 41042