

KENYON BUSINESS PARK

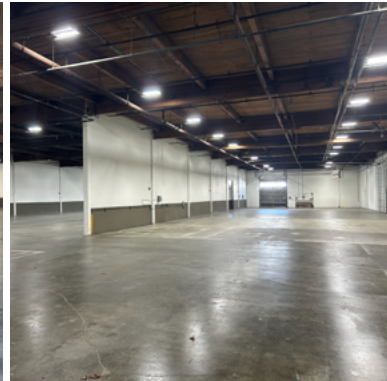
FOR LEASE: 4,827 SF – 16,375 SF

S KENYON ST & OCCIDENTAL AVE S | SEATTLE, WA 98108

SOUTH SEATTLE WAREHOUSE SPACE



Kenyon Business Park is a four building, 127,889 square foot business park with superior visibility located along SR-509 in Seattle. Ideal for shipping and receiving, Kenyon Business Park offers close proximity access to the Port of Seattle, SeaTac Airport, Downtown Seattle I-5 and the Kent Valley.



PROPERTY FEATURES

Great access to SR-509, SR-99 & I-5

± 20' Clear Height

Dock & Grade Loading

Ownership-Management Office Located Nearby

SPENCER MEAD
206.787.1476
smead@neilwalter.com

JIM HONAN
206.787.1464
jhonan@neilwalter.com



*professionally
managed/owned by:*



All information references in this document are approximate. The information contained herein is contained from sources deemed reliable. It is provided without representation, warranty, or guarantee, expressed or implied as to accuracy. Prospective buyer or tenant should conduct its own independent investigation relating to the property, government codes and regulations, allowed uses, and all other matters, regardless of whether they are referred to or contained in this document.

KENYON BUSINESS PARK

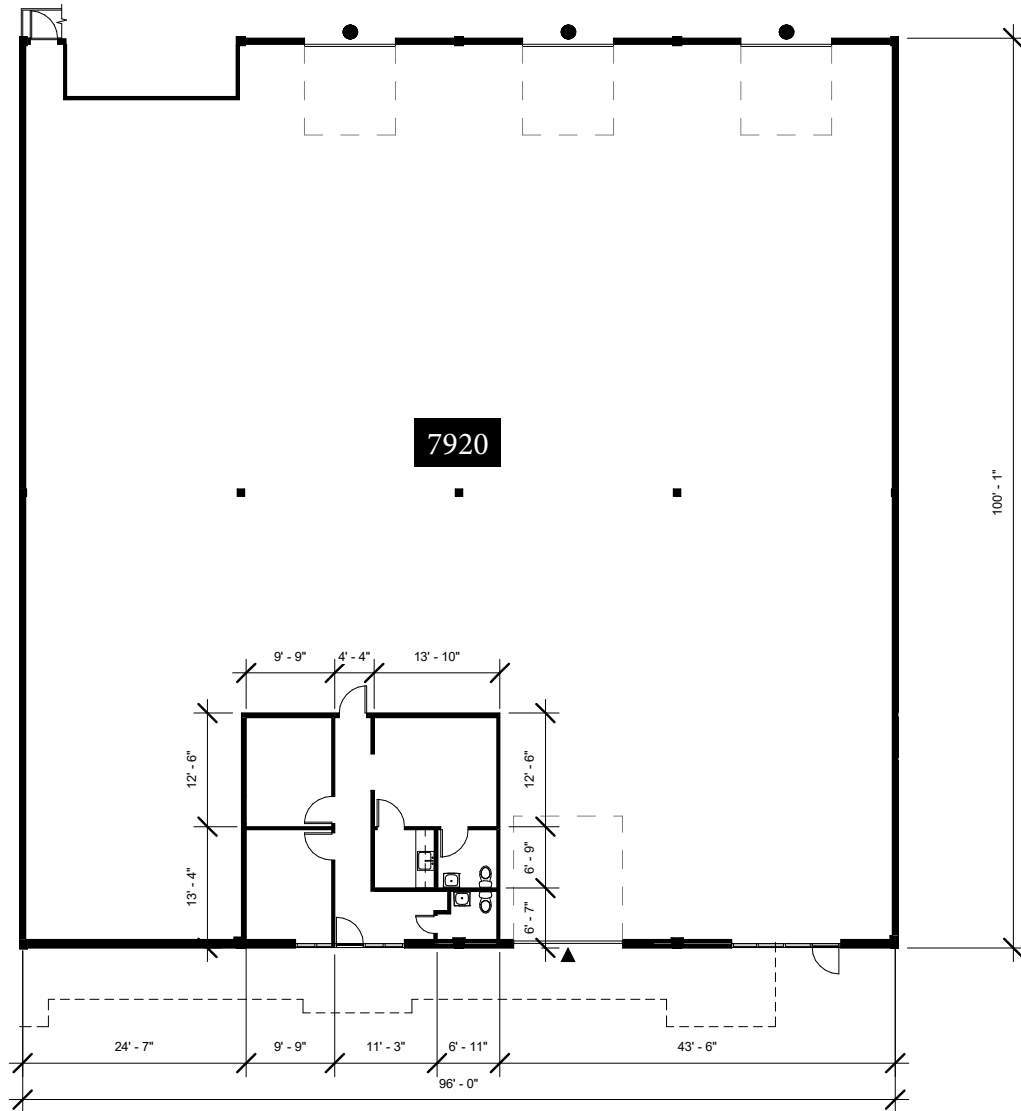
S KENYON ST & OCCIDENTAL AVE S | SEATTLE, WA 98108



Building A Lease Opportunities

Unit(s)	Total SF	Office SF	Loading	Power	Available
7920	9,505 SF	768 SF	1 GL & 3 DH	TBD	Now

Note: Can be combined with 7930 to create 16,375 SF total + 2,571 SF of office



- ▲ Grade Level Door
- Dock High Door

SPENCER MEAD
206.787.1476
smead@neilwalter.com

JIM HONAN
206.787.1464
jhonan@neilwalter.com

550 S Michigan St
Seattle, WA 98108
206.787.1800
www.neilwalter.com

All information references in this document are approximate. The information contained herein is contained from sources deemed reliable. It is provided without representation, warranty, or guarantee, expressed or implied as to accuracy. Prospective buyer or tenant should conduct its own independent investigation relating to the property, government codes and regulations, allowed uses, and all other matters, regardless of whether they are referred to or contained in this document.

KENYON BUSINESS PARK

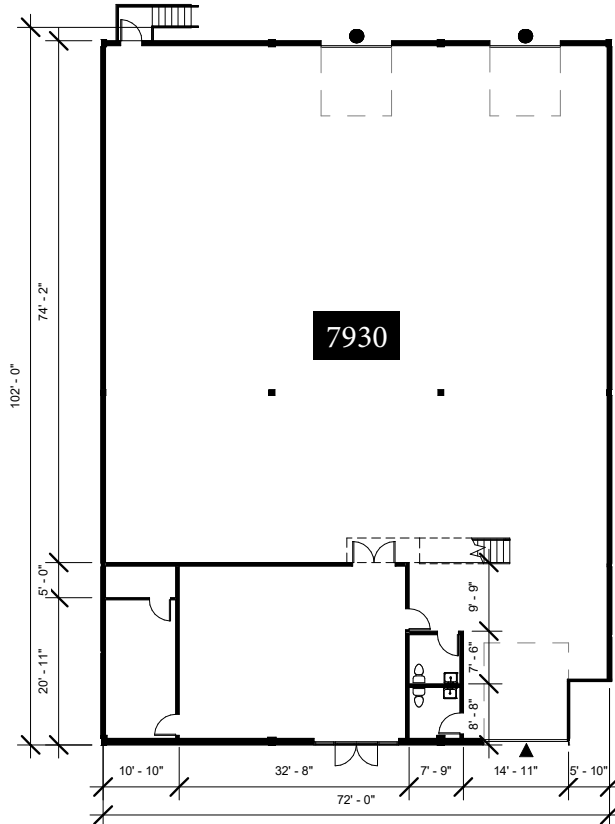
S KENYON ST & OCCIDENTAL AVE S | SEATTLE, WA 98108



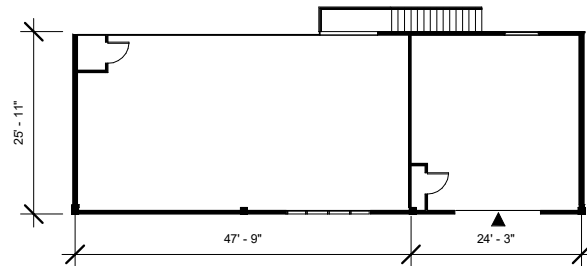
Building A Lease Opportunities

Unit(s)	Total SF	Office SF	Loading	Power	Available
7930	7,170 SF	1,803 SF	2 GL & 2 DH	TBD	11/1/2026

Note: Can be combined with 7920 to create 16,375 SF total + 2,571 SF of office



LEVEL 01



MEZZANINE

- ▲ Grade Level Door
- Dock High Door

SPENCER MEAD
206.787.1476
smead@neilwalter.com

JIM HONAN
206.787.1464
jhanon@neilwalter.com

550 S Michigan St
Seattle, WA 98108
206.787.1800
www.neilwalter.com

All information references in this document are approximate. The information contained herein is contained from sources deemed reliable. It is provided without representation, warranty, or guarantee, expressed or implied as to accuracy. Prospective buyer or tenant should conduct its own independent investigation relating to the property, government codes and regulations, allowed uses, and all other matters, regardless of whether they are referred to or contained in this document.

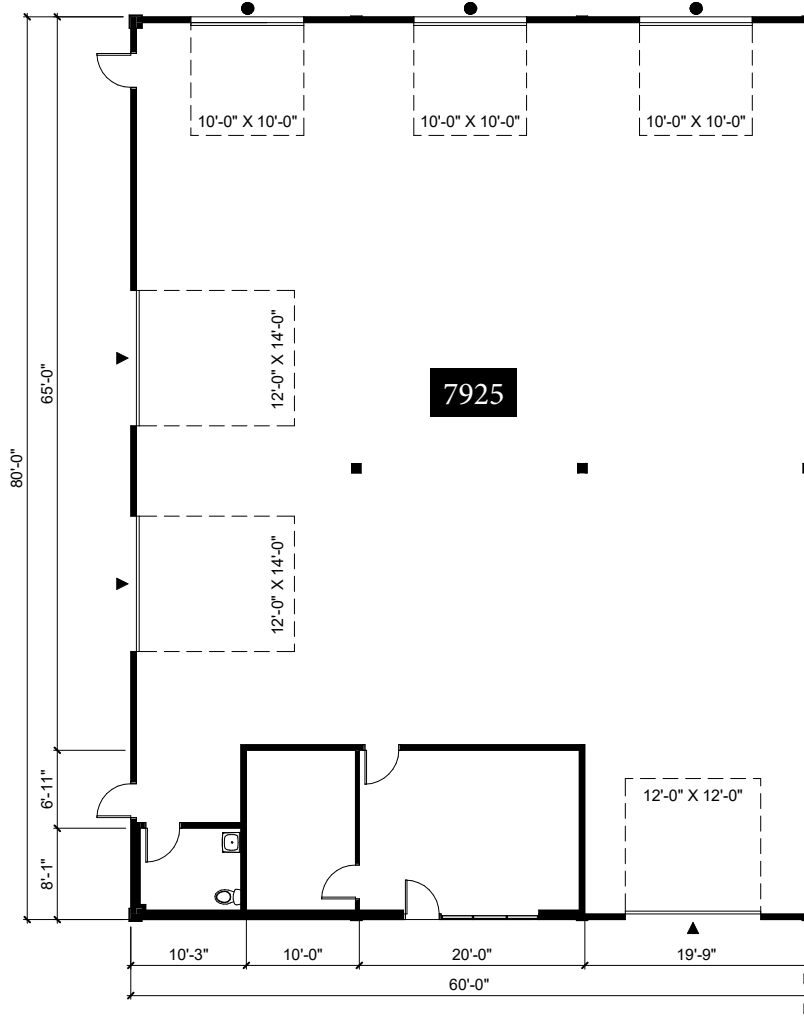
KENYON BUSINESS PARK

S KENYON ST & OCCIDENTAL AVE S | SEATTLE, WA 98108



Building C Lease Opportunities

Unit(s)	Total SF	Office SF	Loading	Power	Available
7925	4,827 SF	556 SF	3 GL & 3 DH	TBD	7/1/2026



- ▲ Grade Level Door
- Dock High Door

SPENCER MEAD
206.787.1476
smead@neilwalter.com

JIM HONAN
206.787.1464
jhonan@neilwalter.com

550 S Michigan St
Seattle, WA 98108
206.787.1800
www.neilwalter.com

All information references in this document are approximate. The information contained herein is contained from sources deemed reliable. It is provided without representation, warranty, or guarantee, expressed or implied as to accuracy. Prospective buyer or tenant should conduct its own independent investigation relating to the property, government codes and regulations, allowed uses, and all other matters, regardless of whether they are referred to or contained in this document.

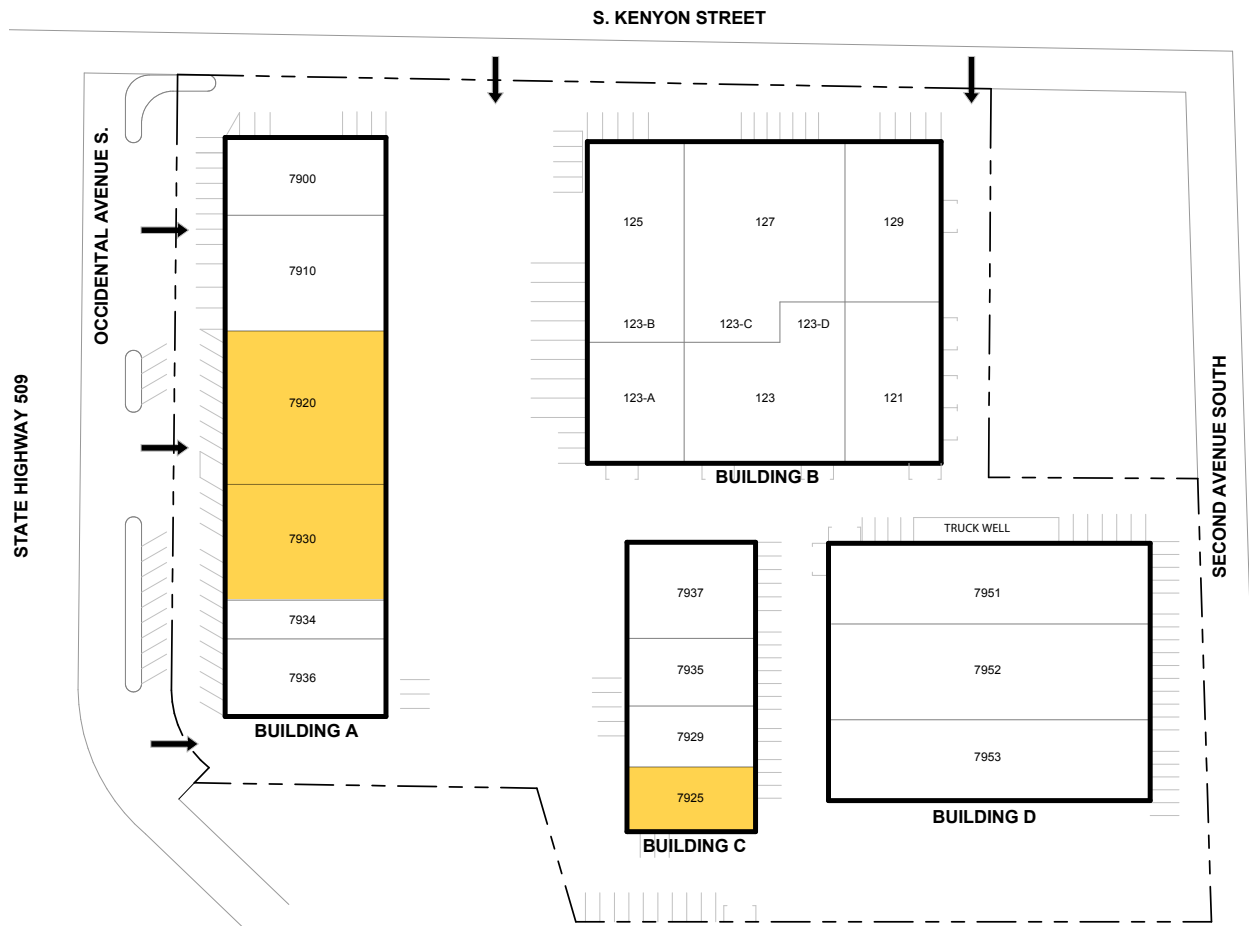
KENYON BUSINESS PARK

S KENYON ST & OCCIDENTAL AVE S | SEATTLE, WA 98108



Current Lease Opportunities

Building	Unit(s)	Total SF	Office SF	Loading	Power	Available
A	7920	9,505 SF	768 SF	1 GL & 3 DH	TBD	Now
A	7930	7,170 SF	1,803 SF	2 GL & 2 DH	TBD	11/1/2026
C	7925	4,827 SF	556 SF	3 GL & 3 DH	TBD	7/1/2026



SPENCER MEAD
206.787.1476
smead@neilwalter.com

JIM HONAN
206.787.1464
jhonan@neilwalter.com

550 S Michigan St
Seattle, WA 98108
206.787.1800
www.neilwalter.com

All information references in this document are approximate. The information contained herein is contained from sources deemed reliable. It is provided without representation, warranty, or guarantee, expressed or implied as to accuracy. Prospective buyer or tenant should conduct its own independent investigation relating to the property, government codes and regulations, allowed uses, and all other matters, regardless of whether they are referred to or contained in this document.