

±38,000 SF
FOR LEASE OR SALE



2830

LUGO STREET

CBRE

Los Angeles, CA 90023



±16,000 SF OFFICES



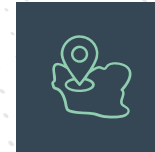
30' CLEAR



2 DH/1 GL



HEAVY POWER - 800 AMPS



M3 ZONING



±50 CAR PARKING



EV CHARGING STATIONS

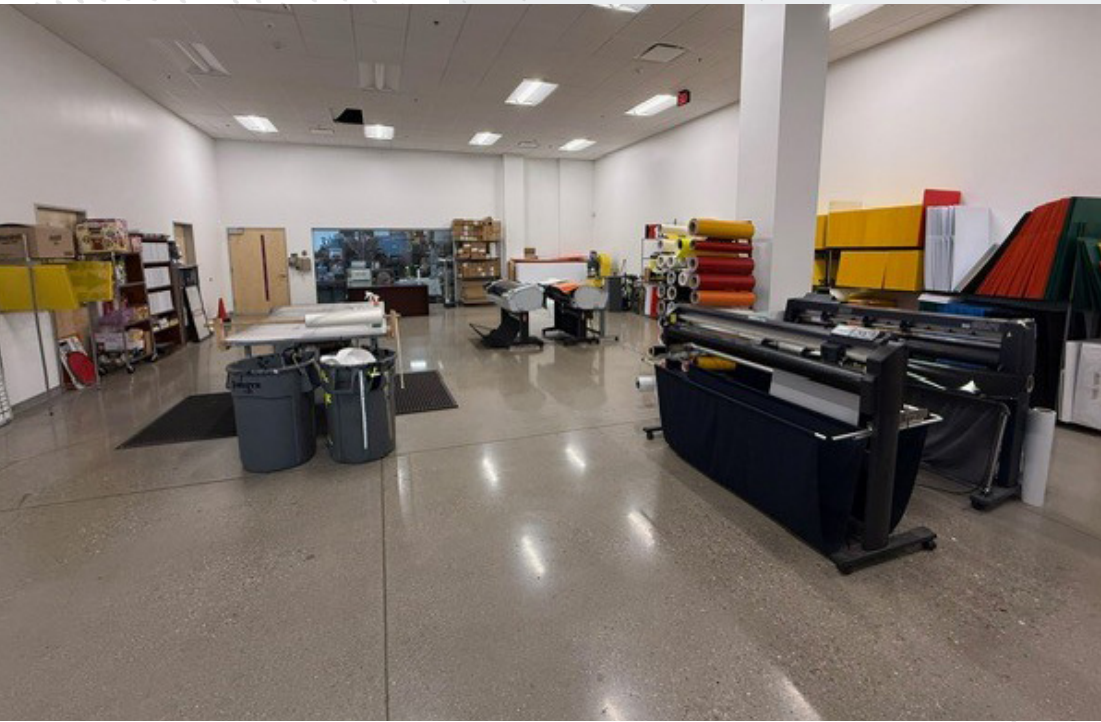


GATED YARD



FIBER CONNECTION

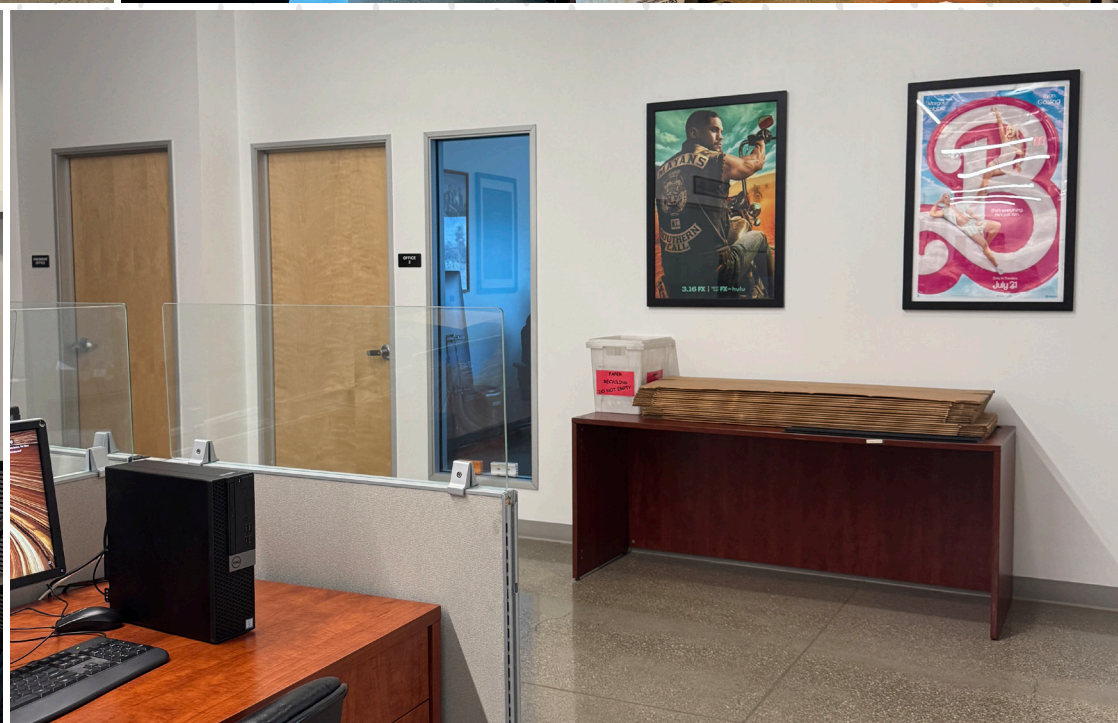




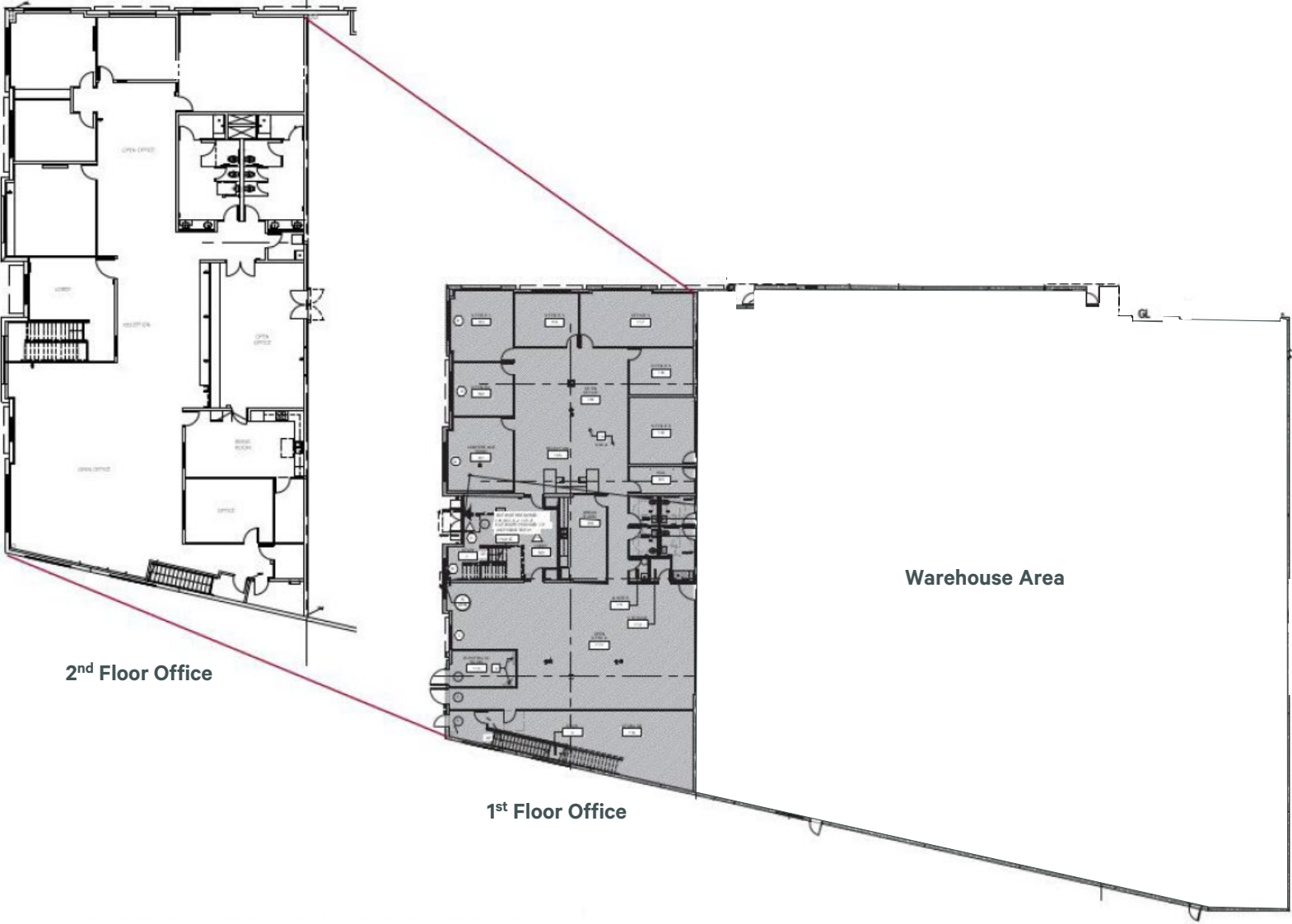


16,000 SF
TWO STORY OFFICE SPACE





SITE PLAN



2830

LUGO STREET



CONTACTS:

Cameron Merrill

Executive Vice President

+1 310 363 4799

Lic. 01392623

cameron.merrill@cbre.com

Matthew Tuinstra

Vice President

+1 310 363 4873

Lic. 022111194

matthew.tuinstra@cbre.com

CBRE

© 2025 CBRE, Inc. CBRE, Inc. All rights reserved. This information has been obtained from sources believed reliable but has not been verified for accuracy or completeness. CBRE, Inc. makes no guarantee, representation or warranty and accepts no responsibility or liability as to the accuracy, completeness, or reliability of the information contained herein. You should conduct a careful, independent investigation of the property and verify all information. Any reliance on this information is solely at your own risk. CBRE and the CBRE logo are service marks of CBRE, Inc. All other marks displayed on this document are the property of their respective owners, and the use of such logos does not imply any affiliation with or endorsement of CBRE. Photos herein are the property of their respective owners. Use of these images without the express written consent of the owner is prohibited. CMPM 2830 Lugo St_BRO_Merrill_v05_TLJ 11/18/25