



FOR LEASE

Gateway Plaza 1004-1020 Gateway Drive, Chaska

OVERVIEW

Gateway Plaza is an attractive centrally located retail building with direct visibility and access to a signalized intersection. The building is located on the corner of Audubon and Chaska Blvd, with cotenants consisting of Caribou Coffee, Papa Murphy's Pizza, SNAP Fitness, Zen Nails and Anna Tobacco and Smoke Shop. Chaska boasts a pro business government. Tenant improvements available in this building with a strong Tenant mix and upscale image!



www.copperwoodmn.com

684 Excelsior Blvd. – Suite 210 – Excelsior, MN 55331

Justin Stueve

o. 952.392.1310 | c. 612.360.8104

justin@copperwoodmn.com



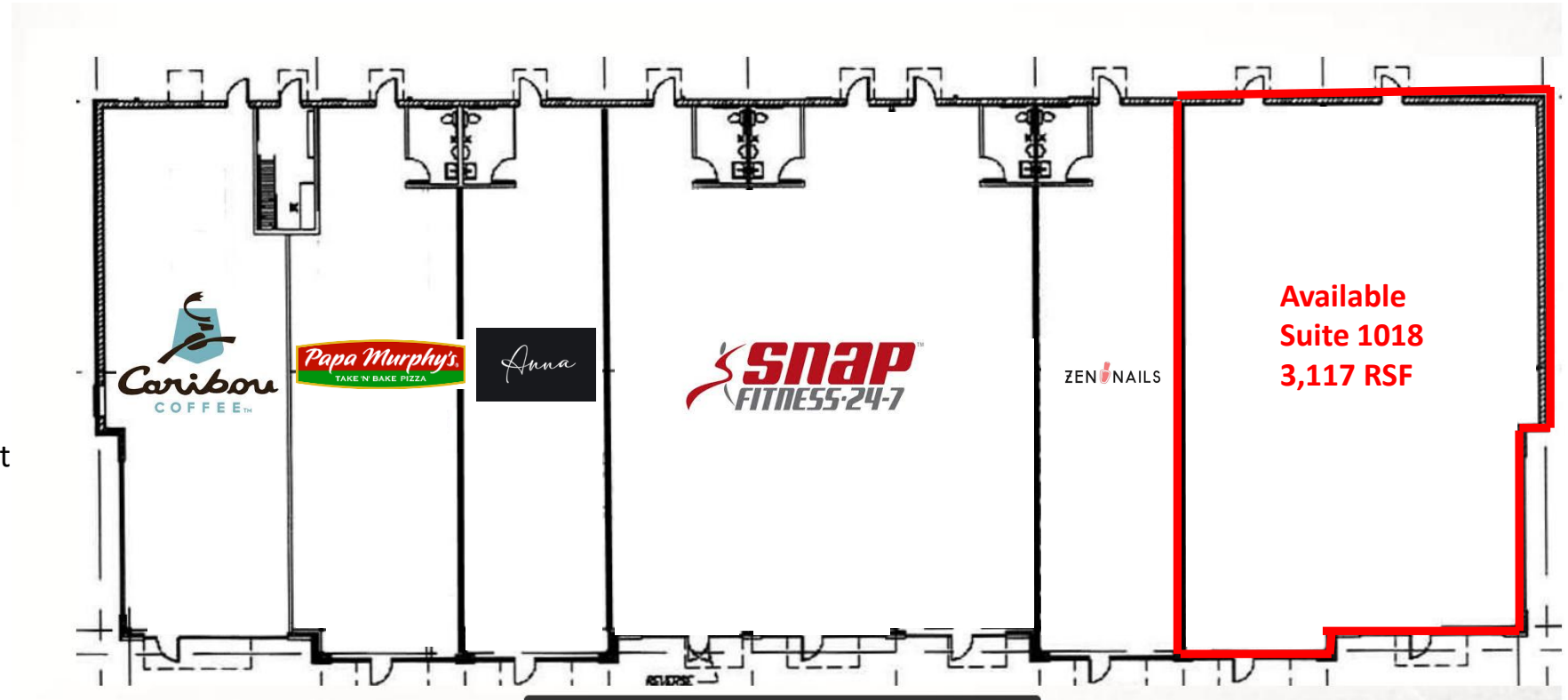
A Division of Copperwood Investments, LLC

FOR LEASE

Gateway Plaza 1004-1020 Gateway Drive, Chaska

SPECS

- Located on Audubon and Chaska Blvd
- Great Visibility
- Former Play Cafe
- Responsive Local Management
- Building Signage Available
- Improvements Available
- 5 mile – 88,797 people
- 5 mile - \$89,504 median income
- Suite #1018 – 3,117 rentable square feet
- Net Rent: \$18.00 per square foot
- Operating Exp: \$10.58 per square foot





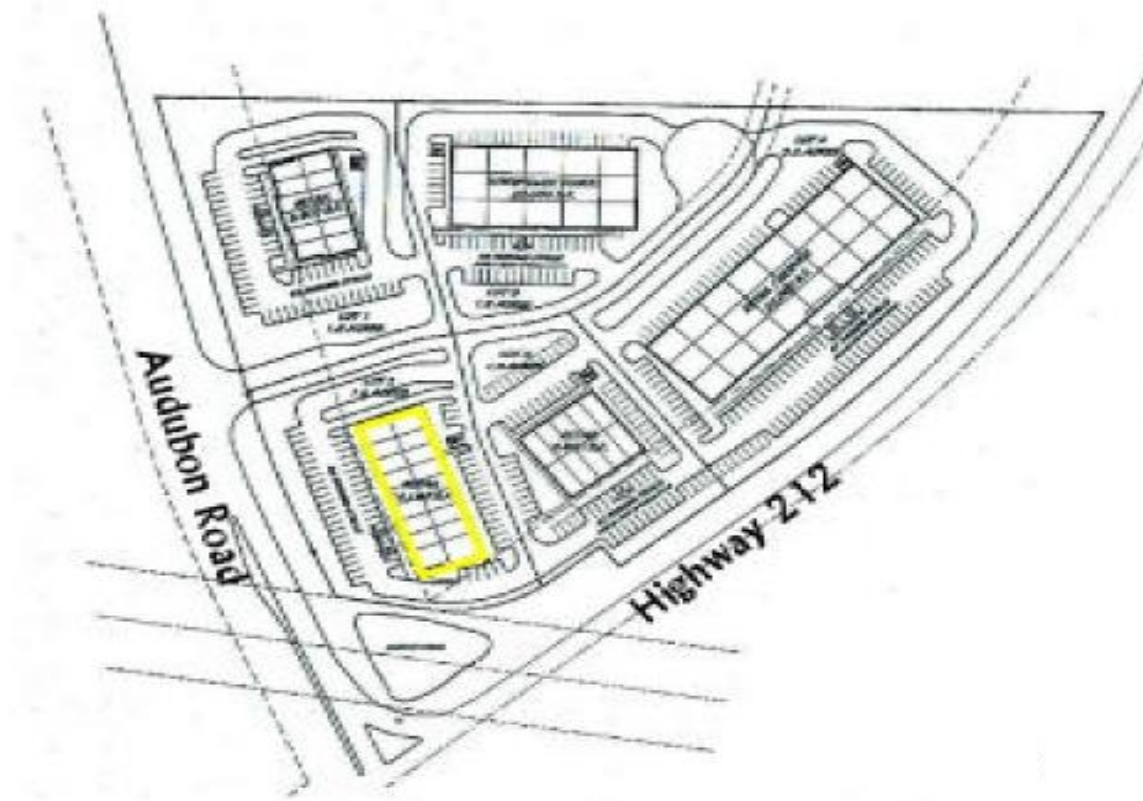
FOR LEASE

Gateway Plaza 1004-1020 Gateway Drive, Chaska



SPECS

Total Building SF	14,038 SF
Suite 1018:	3,117 SF
Net Rent	\$18.00 PSF
Operating Expense:	\$10.58 PSF



www.copperwoodmn.com

684 Excelsior Blvd. – Suite 210 – Excelsior, MN 55331

Justin Stueve

o. 952.392.1310 | c. 612.360.8104

justin@copperwoodmn.com



A Division of Copperwood Investments, LLC

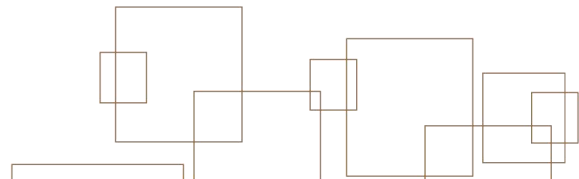
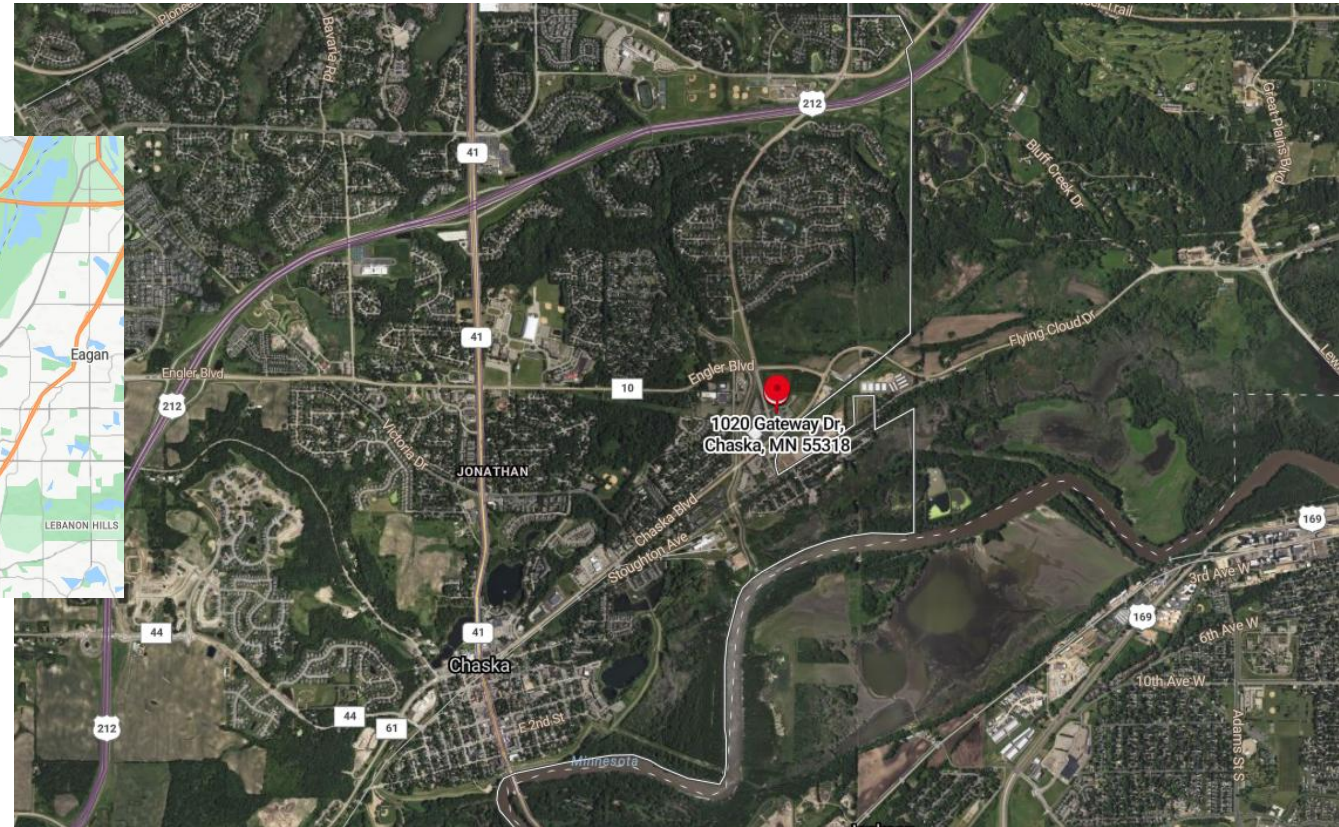
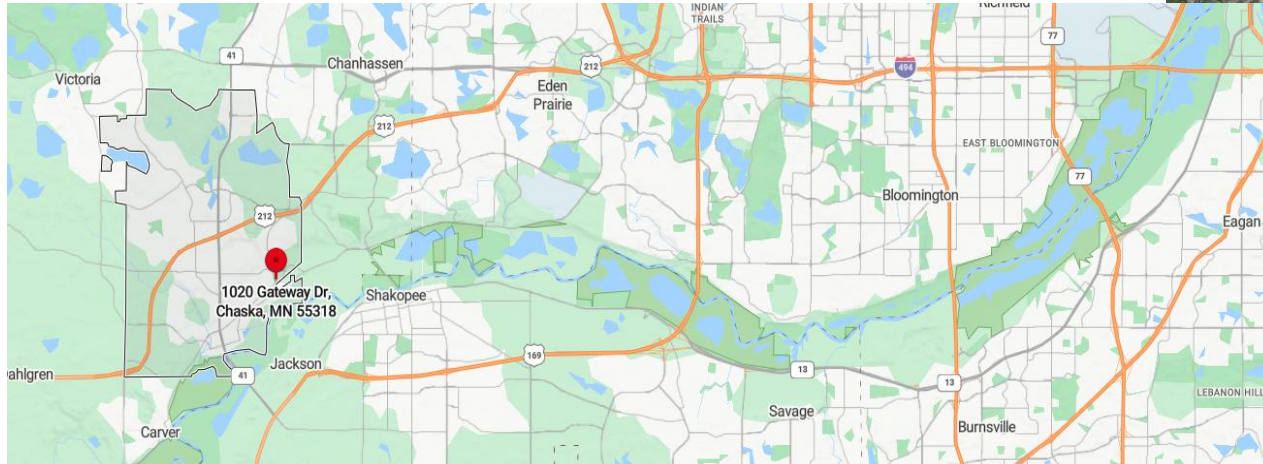


FOR LEASE

Gateway Plaza 1004-1020 Gateway Drive, Chaska



For more information on [Chaska](#)



www.copperwoodmn.com

684 Excelsior Blvd. – Suite 210 – Excelsior, MN 55331

Justin Stueve

o. 952.392.1310 | c. 612.360.8104

justin@copperwoodmn.com



A Division of Copperwood Investments, LLC