

CANYON INDUSTRIAL CENTER



2026 LEASING INCENTIVES
\$1.25 Year 1 rate on qualifying
5 year lease
\$1/sf moving allowance

**UNDER NEW
OWNERSHIP**

**RENOVATIONS
COMPLETE**

9424-9560 CHESAPEAKE DRIVE | SAN DIEGO | CA | 92123

FOR MORE INFORMATION:

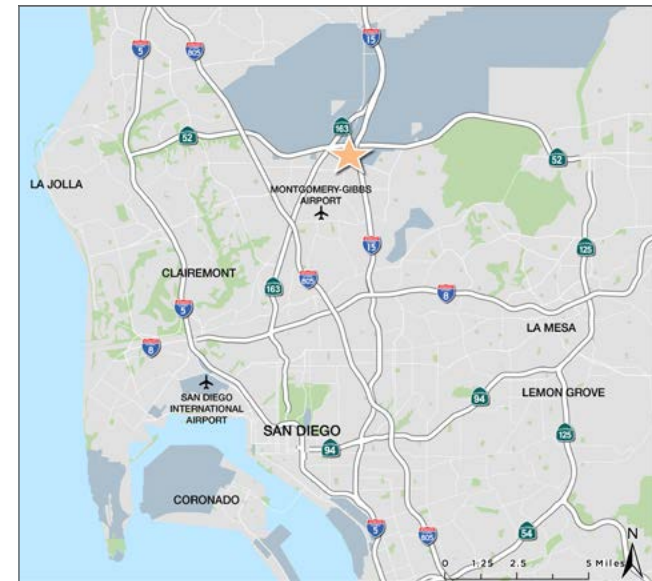
Brant Aberg, SIOR
o. 858.546.5464
brant.aberg@cushwake.com
CA Lic. 01773573

Ryan Downing, SIOR
o. 858.546.5416
ryan.downing@cushwake.com
CA Lic. 01955032

Trinity Carson
o. 602.489.4876
trinity.carson@cushwake.com
CA Lic. 02343245

PROPERTY FEATURES

- High image business park
- Dock and grade level loading
- Warehouse clear height of approx. 15'2" - 19'0"
- Time Warner Cable service available
- Buildings are fire sprinklered
- 1 block West of 1-15 via Clairemont Mesa Blvd
- 1 block South of Hwy 52 via Ruffin Rd
- Parking ratio of approx. 2.46/1,000 SF
- Gas potentially available
- Building signage available

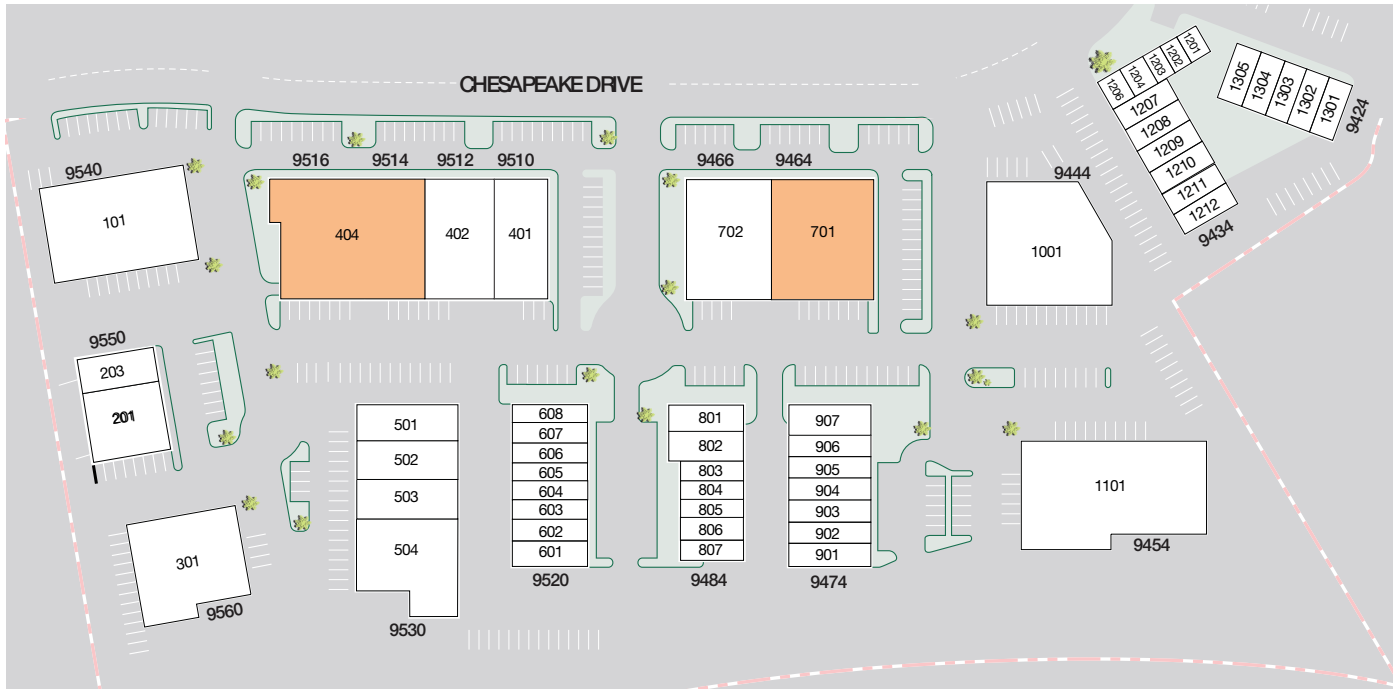


The information contained herein is believed to be accurate but is not warranted as to its accuracy and may change or be updated without notice. Seller or landlord makes no representation as to the environmental condition of the property and recommends purchaser's or tenant's independent investigation.

CANYON INDUSTRIAL CENTER

SITE PLAN

UNDER NEW OWNERSHIP



FOR MORE INFORMATION

Brant Aberg, SIOR
 o. 858.546.5464
 brant.berg@cushwake.com
 CA Lic. 01773573

Ryan Downing, SIOR
 o. 858.546.5416
 ryan.downing@cushwake.com
 CA Lic. 01955032

Trinity Carson
 o. 602.489.4876
 trinity.carson@cushwake.com
 CA Lic. 02343245

2026 LEASING INCENTIVES

Suite 701

- 60 month term
- \$1.25 Year 1 rate
- \$1/sf moving allowance

Suite 403

- 60 month term
- \$1.50 Year 1 rate
- \$1/sf moving allowance

Suite 404

- 60 month term
- \$1.25 Year 1 rate
- \$1/sf moving allowance

AVAILABILITIES

BLDG	SUITE	TOTAL SF	RATE	OFFICE %	COMMENTS	AVAILABLE	OCCUPIED
9510-9516	403	6,247	\$2.05/SF NNN	22%	Reception, (1) private office, breakroom, (2) restrooms and warehouse with (2) grade level loading doors. Available now. *Can be combined with Suite 404 for 18,692 SF.	<input checked="" type="checkbox"/>	<input type="checkbox"/>
9510-9516	404	12,445	\$2.05/SF NNN	10%	Reception, (2) private offices, breakroom, (2) restrooms and warehouse with (1) dock high and (2) grade level loading doors. Available now. *Can be combined with Suite 403 for 18,692 SF.	<input checked="" type="checkbox"/>	<input type="checkbox"/>
9464-9466	701	13,183	\$2.05/SF NNN	10%	Reception, (1) private office, conference room, breakroom, IT, (3) restrooms and warehouse with (1) dock high and (1) grade level loading door. Available now.	<input checked="" type="checkbox"/>	<input type="checkbox"/>

CANYON INDUSTRIAL CENTER
 9424-9560 CHESAPEAKE DRIVE
 SAN DIEGO, CA 92123



CANYON INDUSTRIAL CENTER

EXTERIOR PHOTOS

UNDER NEW OWNERSHIP



FOR MORE INFORMATION

Brant Aberg, SIOR
o. 858.546.5464
brant.aberg@cushwake.com
CA Lic. 01773573

Ryan Downing, SIOR
o. 858.546.5416
ryan.downing@cushwake.com
CA Lic. 01955032

Trinity Carson
o. 602.489.4876
trinity.carson@cushwake.com
CA Lic. 02343245

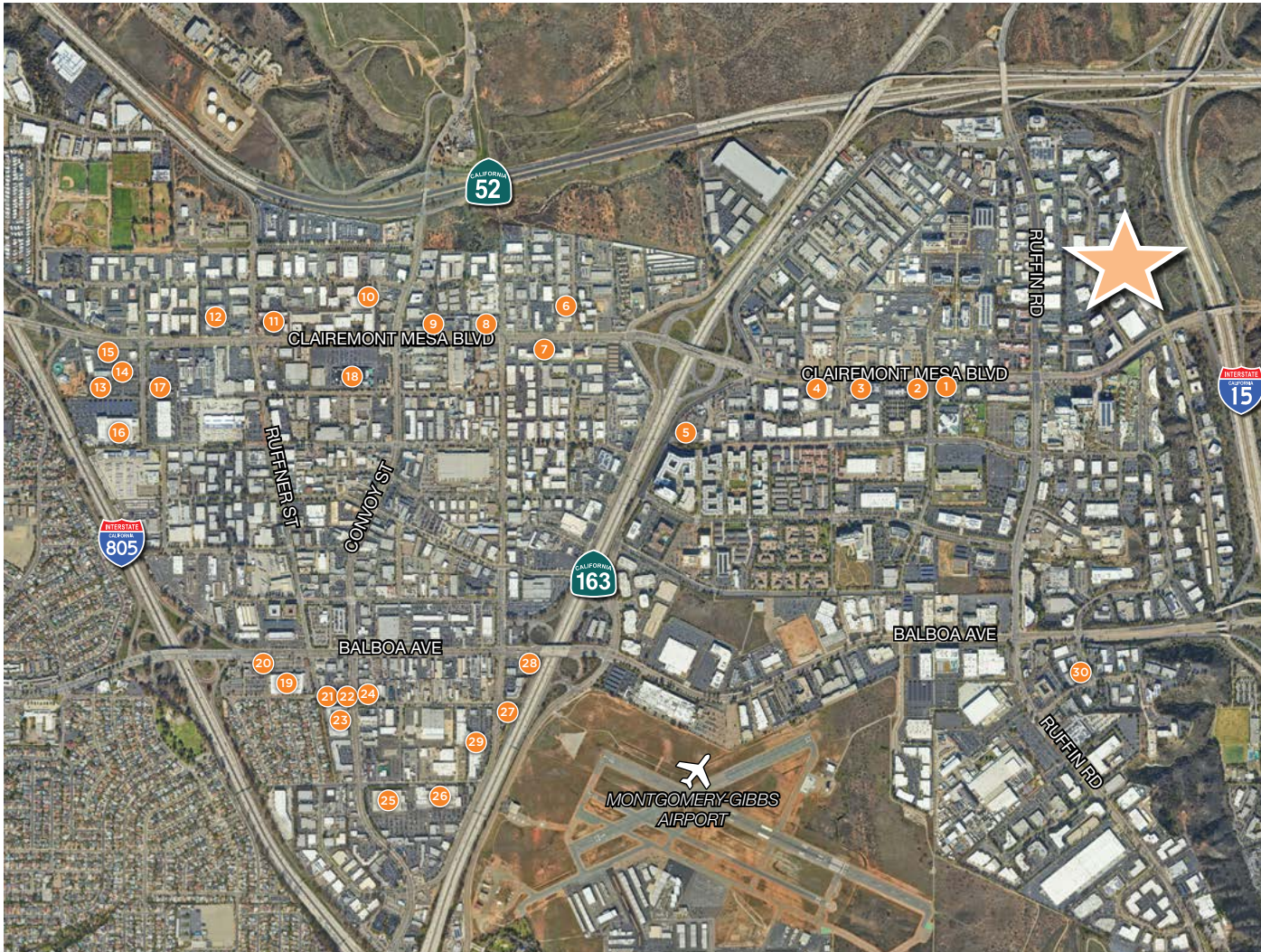
CANYON INDUSTRIAL CENTER
9424-9560 CHESAPEAKE DRIVE
SAN DIEGO, CA 92123



CANYON INDUSTRIAL CENTER

AMENITIES

UNDER NEW OWNERSHIP



FOR MORE INFORMATION

Brant Aberg, SIOR
 o. 858.546.5464
 brant.aberg@cushwake.com
 CA Lic. 01773573

Ryan Downing, SIOR
 o. 858.546.5416
 ryan.downing@cushwake.com
 CA Lic. 01955032

Trinity Carson
 o. 602.489.4876
 trinity.carson@cushwake.com
 CA Lic. 02343245

- | | | | | | | | | | |
|----------------------|-----------------------|-------------------------|----------------------------|---------------------|--------------------------|-------------------|-------------------------|---------------------------|-------------------------------|
| 1
Starbucks | 2
Firehouse Subs | 3
Panera Bread | 4
McDonalds | 5
Sonic Drive-In | 6
Societe Brewing Co. | 7
Kearny Plaza | 8
Mercury Village SC | 9
The Godfather | 10
Hopponymous Brewing Co. |
| 11
Rubios | 12
99 Ranch Market | 13
LA Fitness | 14
Chipotle | 15
McDonalds | 16
Walmart | 17
Food 4 Less | 18
Zion Market | 19
H Mart | 20
Applebee's |
| 21
Coco Ichibanya | 22
Manna BBQ | 23
Convoy Village SC | 24
Cross Street Chicken | 25
Costco | 26
Target | 27
In-N-Out | 28
Marukai | 29
Hawthorne Crossings | 30
Bud's Louisiana Cafe |

CANYON INDUSTRIAL CENTER
 9424-9560 CHESAPEAKE DRIVE
 SAN DIEGO, CA 92123



CANYON INDUSTRIAL CENTER

FLOOR PLAN | BLDG. 9510-9516 | SUITE 403

UNDER NEW OWNERSHIP



LEASING INCENTIVES

Suite 403

- 60 month term
- \$1.50 Year 1 rate
- \$1/sf moving allowance

BLDG 9510 | SUITE 403

- AVAILABLE SF: ±6,247 SF
- OFFICE SF: 1,405 SF
- CLEAR HEIGHT: 15'8" - 19'6"
- LOADING: (2) GL
- AVAILABLE NOW
- CAN BE COMBINED WITH SUITE 404 FOR 18,692 SF

FOR MORE INFORMATION

Brant Aberg, SIOR

o. 858.546.5464
brant.aberg@cushwake.com
CA Lic. 01773573

Ryan Downing, SIOR

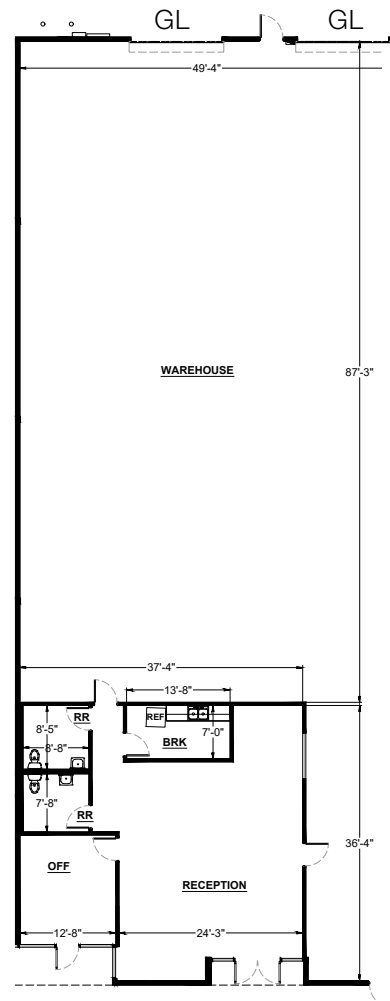
o. 858.546.5416
ryan.downing@cushwake.com
CA Lic. 01955032

Trinity Carson

o. 602.489.4876
trinity.carson@cushwake.com
CA Lic. 02343245

CANYON INDUSTRIAL CENTER

9424-9560 CHESAPEAKE DRIVE
SAN DIEGO, CA 92123



CANYON INDUSTRIAL CENTER

FLOOR PLAN | BLDG. 9510-9516 | SUITE 404

UNDER NEW OWNERSHIP



LEASING INCENTIVES

Suite 404

- 60 month term
- \$1.25 Year 1 rate
- \$1/sf moving allowance

BLDG 9510 | SUITE 404

- AVAILABLE SF: ±12,445 SF
- OFFICE SF: 1,207 SF
- CLEAR HEIGHT: 15'8" - 19'6"
- LOADING: (1) DH, (2) GL
- AVAILABLE NOW
- CAN BE COMBINED WITH SUITE 403 FOR 18,692 SF

FOR MORE INFORMATION

Brant Aberg, SIOR

o. 858.546.5464
brant.aberg@cushwake.com
CA Lic. 01773573

Ryan Downing, SIOR

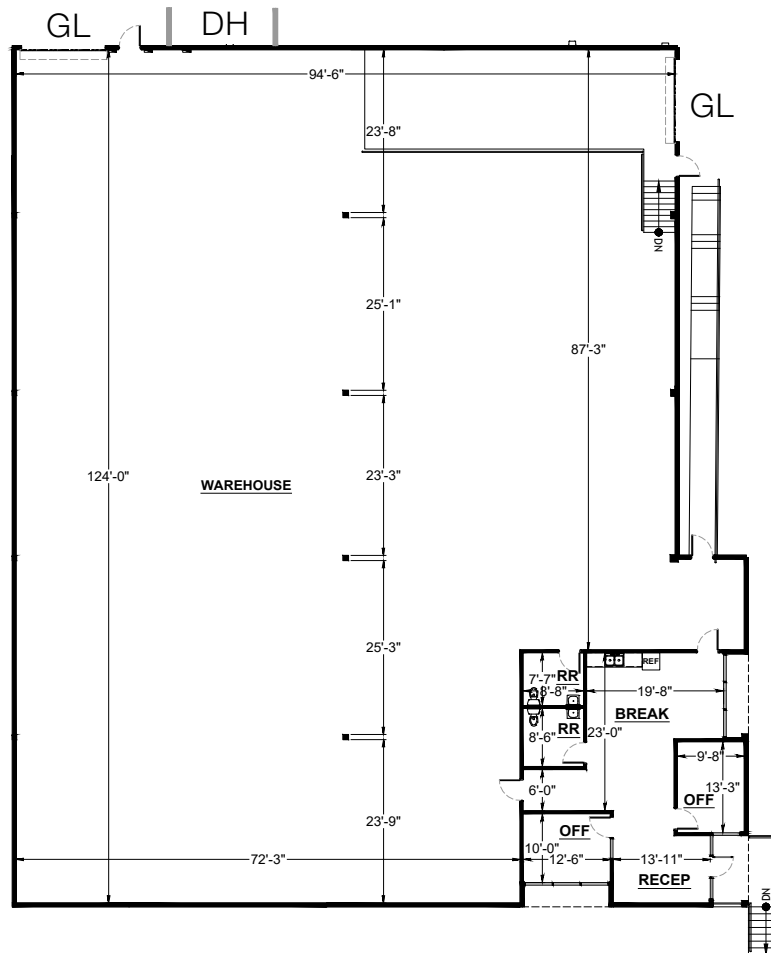
o. 858.546.5416
ryan.downing@cushwake.com
CA Lic. 01955032

Trinity Carson

o. 602.489.4876
trinity.carson@cushwake.com
CA Lic. 02343245

CANYON INDUSTRIAL CENTER

9424-9560 CHESAPEAKE DRIVE
SAN DIEGO, CA 92123



CANYON INDUSTRIAL CENTER

FLOOR PLAN | BLDG. 9464-9466 | SUITE 701

UNDER NEW OWNERSHIP



LEASING INCENTIVES

Suite 701

- 60 month term
- \$1.25 Year 1 rate
- \$1/sf moving allowance

BLDG 9464-66 | SUITE 701

- AVAILABLE SF: ±13,183 SF
- OFFICE SF: 1,231 SF
- CLEAR HEIGHT: 15'8" - 19'6"
- LOADING: (1) DH, (1) GL
- AVAILABLE NOW

FOR MORE INFORMATION

Brant Aberg, SIOR

o. 858.546.5464

brant.aberg@cushwake.com

CA Lic. 01773573

Ryan Downing, SIOR

o. 858.546.5416

ryan.downing@cushwake.com

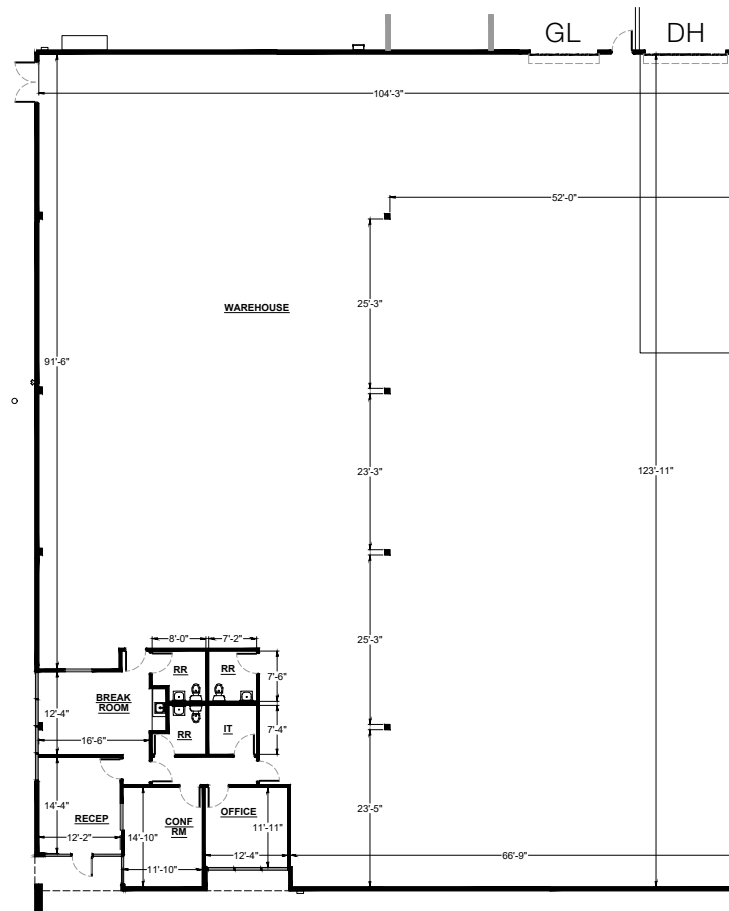
CA Lic. 01955032

Trinity Carson

o. 602.489.4876

trinity.carson@cushwake.com

CA Lic. 02343245



CANYON INDUSTRIAL CENTER

9424-9560 CHESAPEAKE DRIVE

SAN DIEGO, CA 92123

