

RETAIL PROPERTY // FOR LEASE

EXCEPTIONAL RETAIL, OFFICE AND FLEX SPACE AVAILABLE - GREAT HARPER AVE FRONTAGE!

24000 - 24090 HARPER AVE
ST CLAIR SHORES, MI 48080



- Retail, office, and flex space available
- High-visibility on Harper Ave with signage and frontage for maximum exposure
- Ample parking for convenience - 159 spaces
- Versatile layout to suit various businesses
- Spacious interior for flexible usage
- Prime commercial location for business success
- Easy access to I-94 and I-696 Expressways



26555 Evergreen Road, Suite 1500
Southfield, MI 48076
248.358.0100
paccommercial.com

We obtained the information above from sources we believe to be reliable. However, we have not verified its accuracy and make no guarantee, warranty or representation about it. It is submitted subject to the possibility of errors, omissions, change of price, rental or other conditions, prior sale, lease or financing, or withdrawal without notice. We include projections, opinions, assumptions or estimates for example only, and they may not represent current, past or future performance of the property. You and your tax and legal advisors should conduct your own investigation of the property and transaction.

EXECUTIVE SUMMARY



Lease Rate	\$9.00 - 12.00 SF/YR (NNN)
-------------------	-----------------------------------

OFFERING SUMMARY

Building Size:	31,111 SF
Available SF:	1,155 - 11,000 SF
Lot Size:	2.07 Acres
Number of Units:	8
Year Built:	1955
Zoning:	B-3
Market:	Detroit
Submarket:	Macomb East
Traffic Count:	17,000

PROPERTY OVERVIEW

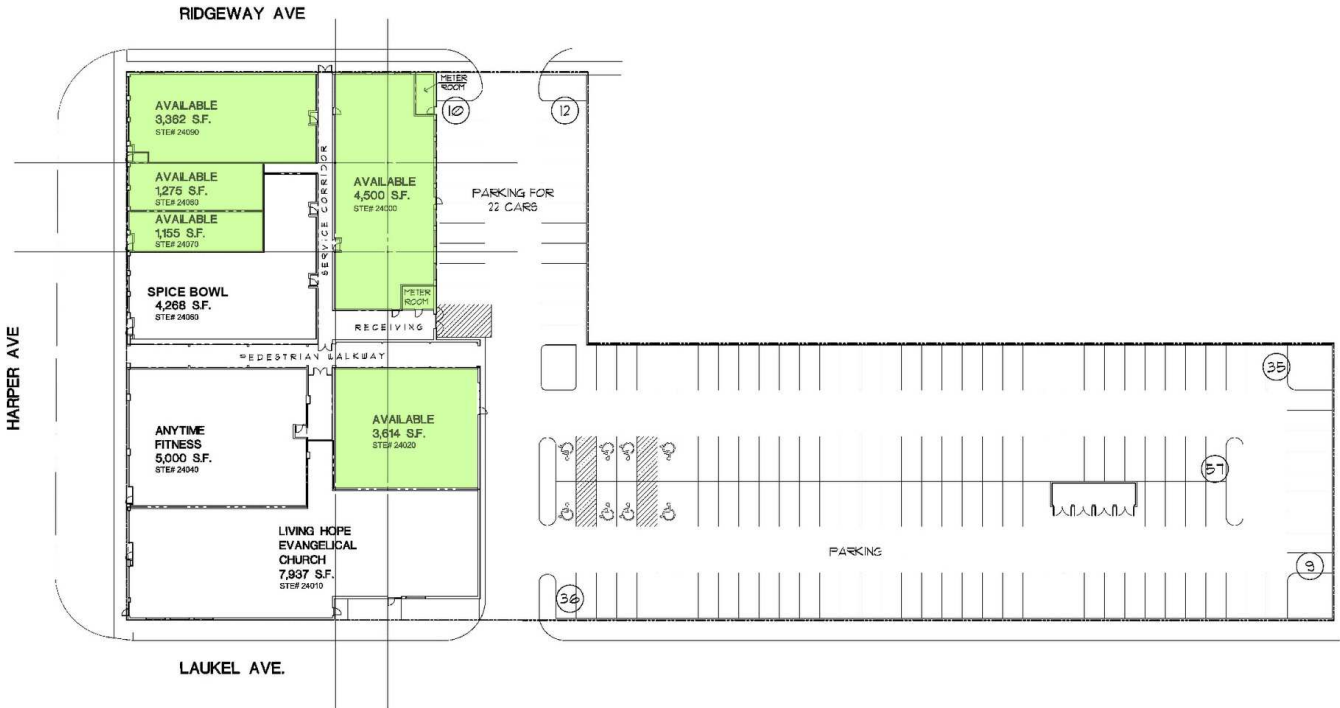
This desirable retail, office, and flex property offers a spacious and versatile layout suitable for a wide range of businesses. With high visibility, ample parking, and excellent signage opportunities, it's an ideal location to maximize your business' exposure. The modern design and well-maintained premises provide a professional setting for your operations. There are currently four (4) retail units available from 1,155 SF to up to 11,000 SF to accommodate a variety of needs. There is also a 3,614 SF wide-open flex space with 22' ceilings. Additionally, the property's convenient location on Harper Ave ensures ease of transportation for retail clientele and employees. Don't miss this opportunity to elevate your business in this sought-after location.

LOCATION OVERVIEW

This area is home to a variety of popular attractions and conveniences, including the Nautical Mile and Lake St. Clair, creating a charming and inviting atmosphere for retail businesses. Nearby points of interest include Kroger, well-established dining destinations, entertainment venues, and downtown St. Clair Shores, attracting a steady flow of locals and visitors alike. The area surrounding the location offers a dynamic and diverse consumer base, presenting an excellent opportunity for tenants to thrive and grow.

24000 - 24090 HARPER AVE, ST CLAIR SHORES, MI 48080 // FOR LEASE

LEASE SPACES



LEASE INFORMATION

Lease Type:	NNN	Lease Term:	Negotiable
Total Space:	1,155 - 11,000 SF	Lease Rate:	\$9.00 - \$12.00 SF/yr

AVAILABLE SPACES

SUITE	TENANT	SIZE (SF)	LEASE TYPE	LEASE RATE
24000 Harper Ave	Available	4,500 - 11,000 SF	NNN	\$12.00 SF/yr
24020 Harper Ave	Available	3,614 - 11,000 SF	NNN	\$9.00 SF/yr
24090 Harper Ave	Available	3,362 - 11,000 SF	NNN	\$10.00 SF/yr
24080 Harper Ave	Available	1,275 - 11,000 SF	NNN	\$10.00 SF/yr
24070 Harper Ave	Available	1,155 - 11,000 SF	NNN	\$10.00 SF/yr

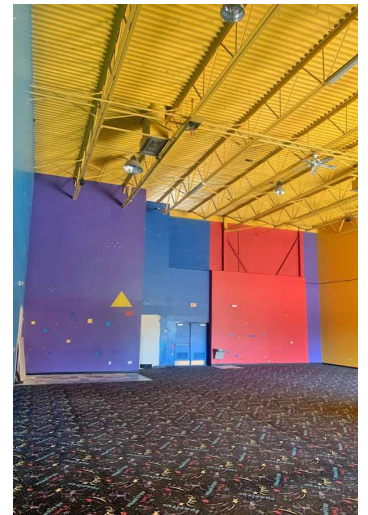
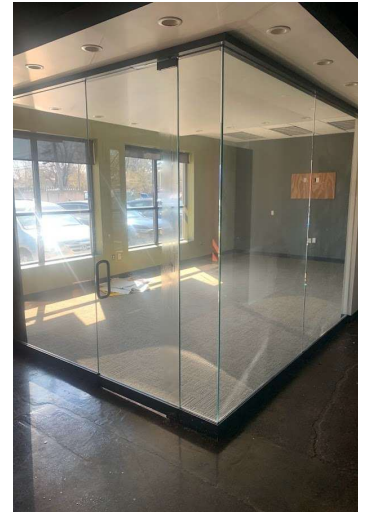
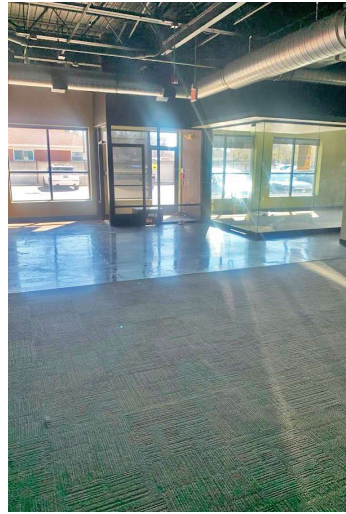
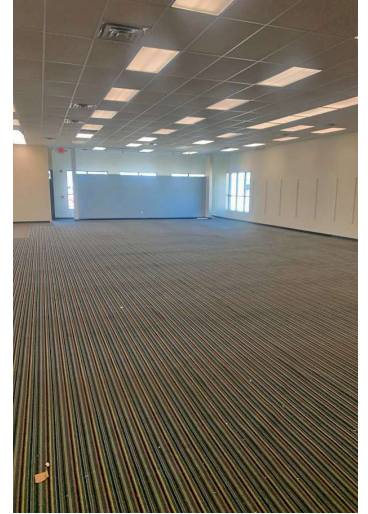


Phillip Myers SENIOR ASSOCIATE | **John E. De Wald, CPA** PRINCIPAL
 D: 248.281.9904 | C: 586.242.4047 | D: 248.663.0504 | C: 313.510.3777
 phil@pacommercial.com | johnd@pacommercial.com

We obtained the information above from sources we believe to be reliable. However, we have not verified its accuracy and make no guarantee, warranty or representation about it. It is submitted subject to the possibility of errors, omissions, change of price, rental or other conditions, prior sale, lease or financing, or withdrawal without notice. We include projections, opinions, assumptions or estimates for example only, and they may not represent current, past or future performance of the property. You and your tax and legal advisors should conduct your own investigation of the property and transaction.

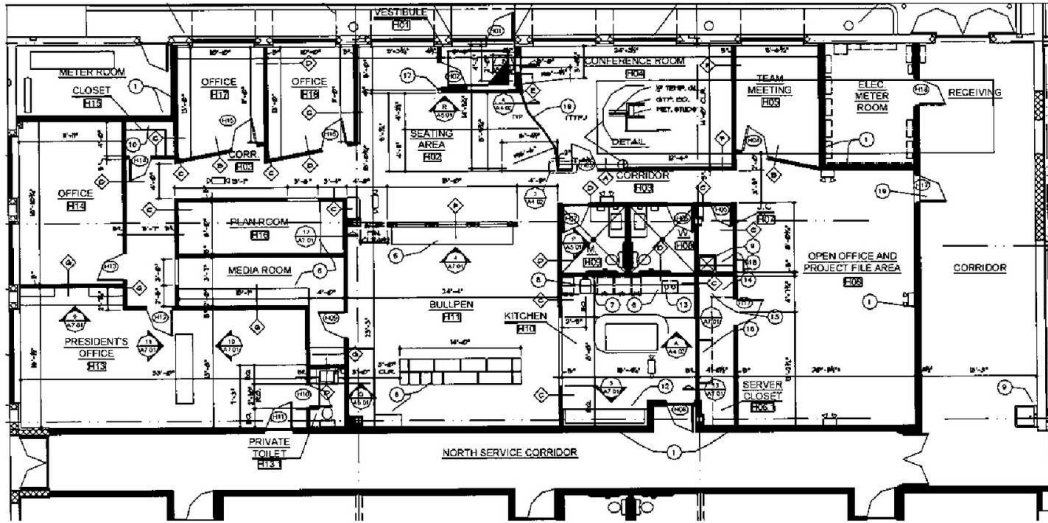
24000 - 24090 HARPER AVE, ST CLAIR SHORES, MI 48080 // FOR LEASE

INTERIOR PHOTOS

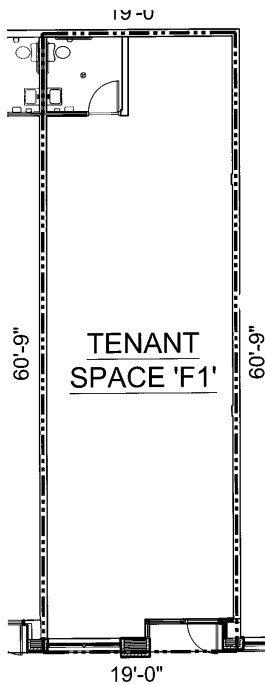


24000 - 24090 HARPER AVE, ST CLAIR SHORES, MI 48080 // FOR LEASE

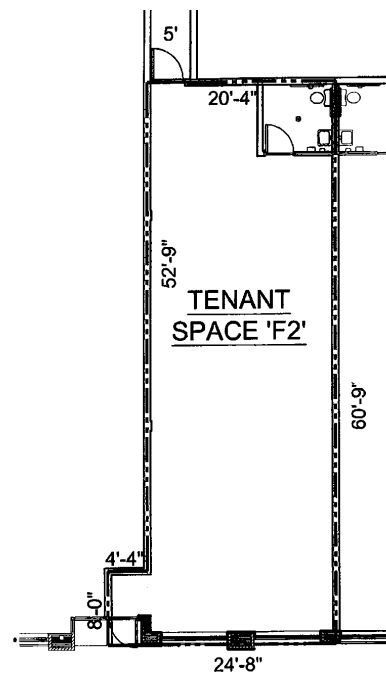
FLOOR PLANS



24000 Harper Ave | 4,500 SF



24070 Harper Ave | 1,155 SF



24080 Harper Ave | 1,275 SF



Phillip Myers SENIOR ASSOCIATE
D: 248.281.9904 | C: 586.242.4047
phil@pacommercial.com

John E. De Wald, CPA PRINCIPAL
D: 248.663.0504 | C: 313.510.3777
john@pacommercial.com

We obtained the information above from sources we believe to be reliable. However, we have not verified its accuracy and make no guarantee, warranty or representation about it. It is submitted subject to the possibility of errors, omissions, change of price, rental or other conditions, prior sale, lease or financing, or withdrawal without notice. We include projections, opinions, assumptions or estimates for example only, and they may not represent current, past or future performance of the property. You and your tax and legal advisors should conduct your own investigation of the property and transaction.

24000 - 24090 HARPER AVE, ST CLAIR SHORES, MI 48080 // FOR LEASE



RETAILER MAP



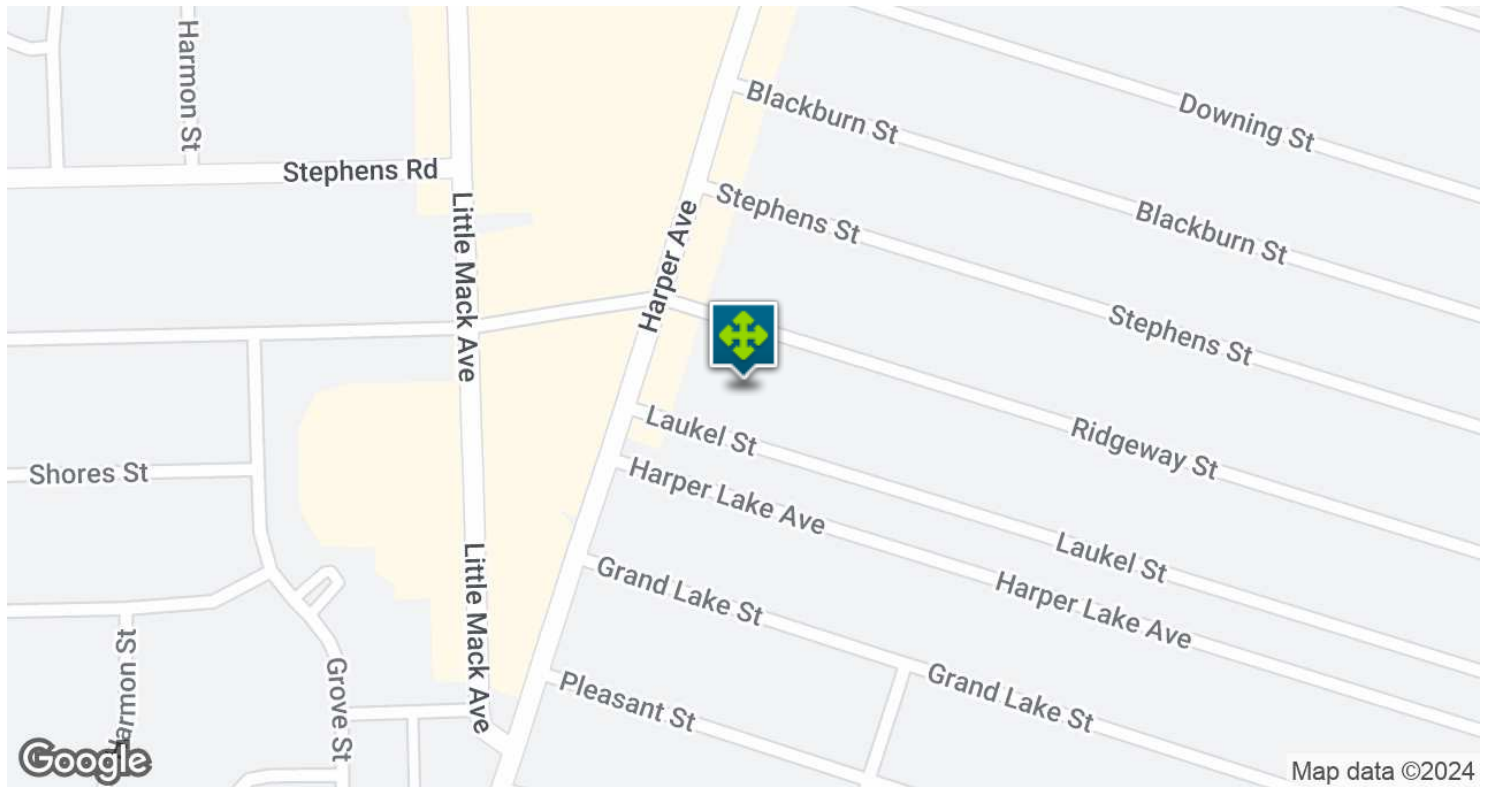
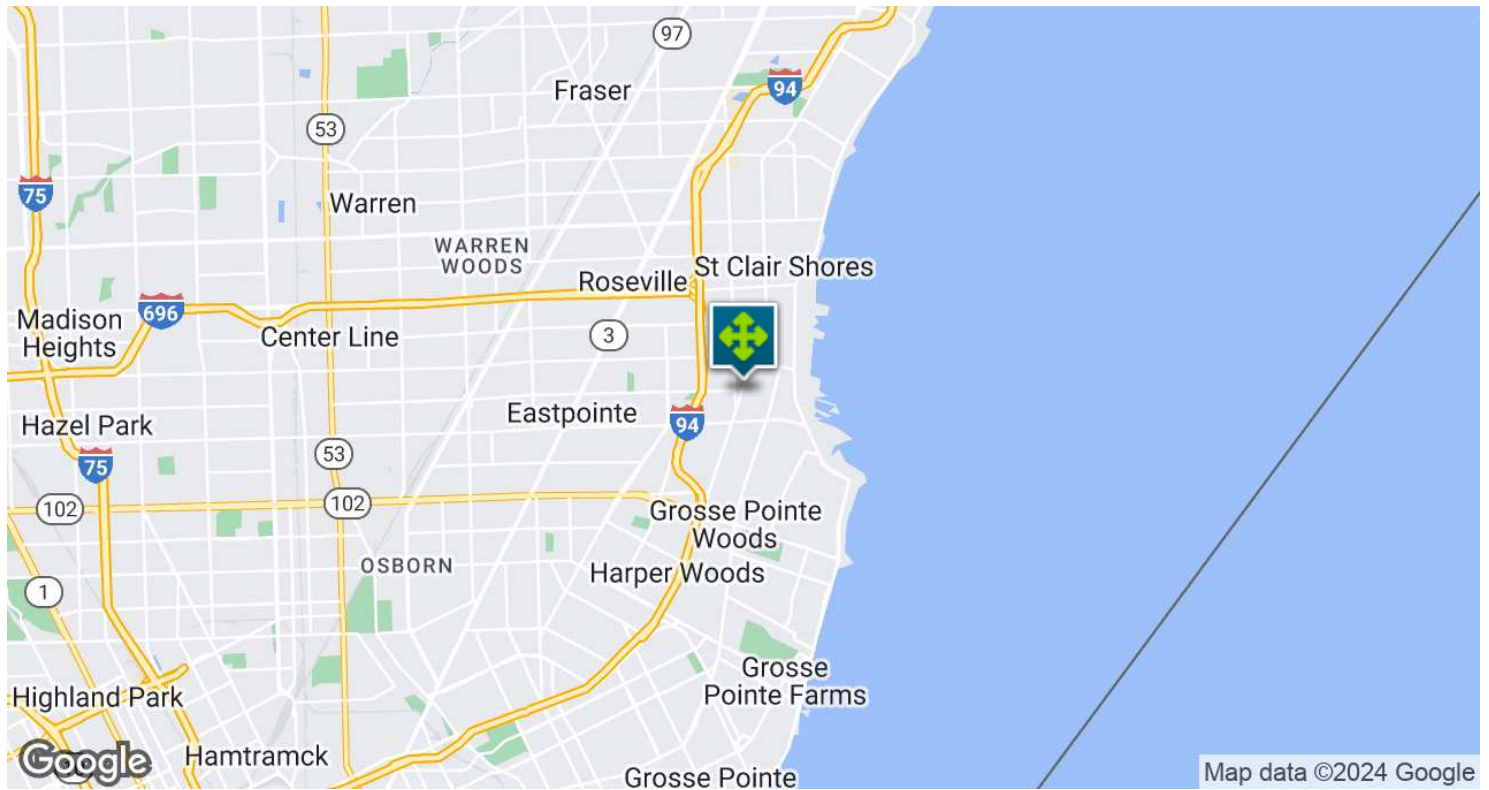
Phillip Myers SENIOR ASSOCIATE
 D: 248.281.9904 | C: 586.242.4047
 phil@pacommercial.com

John E. De Wald, CPA PRINCIPAL
 D: 248.663.0504 | C: 313.510.3777
 johnd@pacommercial.com

We obtained the information above from sources we believe to be reliable. However, we have not verified its accuracy and make no guarantee, warranty or representation about it. It is submitted subject to the possibility of errors, omissions, change of price, rental or other conditions, prior sale, lease or financing, or withdrawal without notice. We include projections, opinions, assumptions or estimates for example only, and they may not represent current, past or future performance of the property. You and your tax and legal advisors should conduct your own investigation of the property and transaction.

24000 - 24090 HARPER AVE, ST CLAIR SHORES, MI 48080 // FOR LEASE

LOCATION MAP

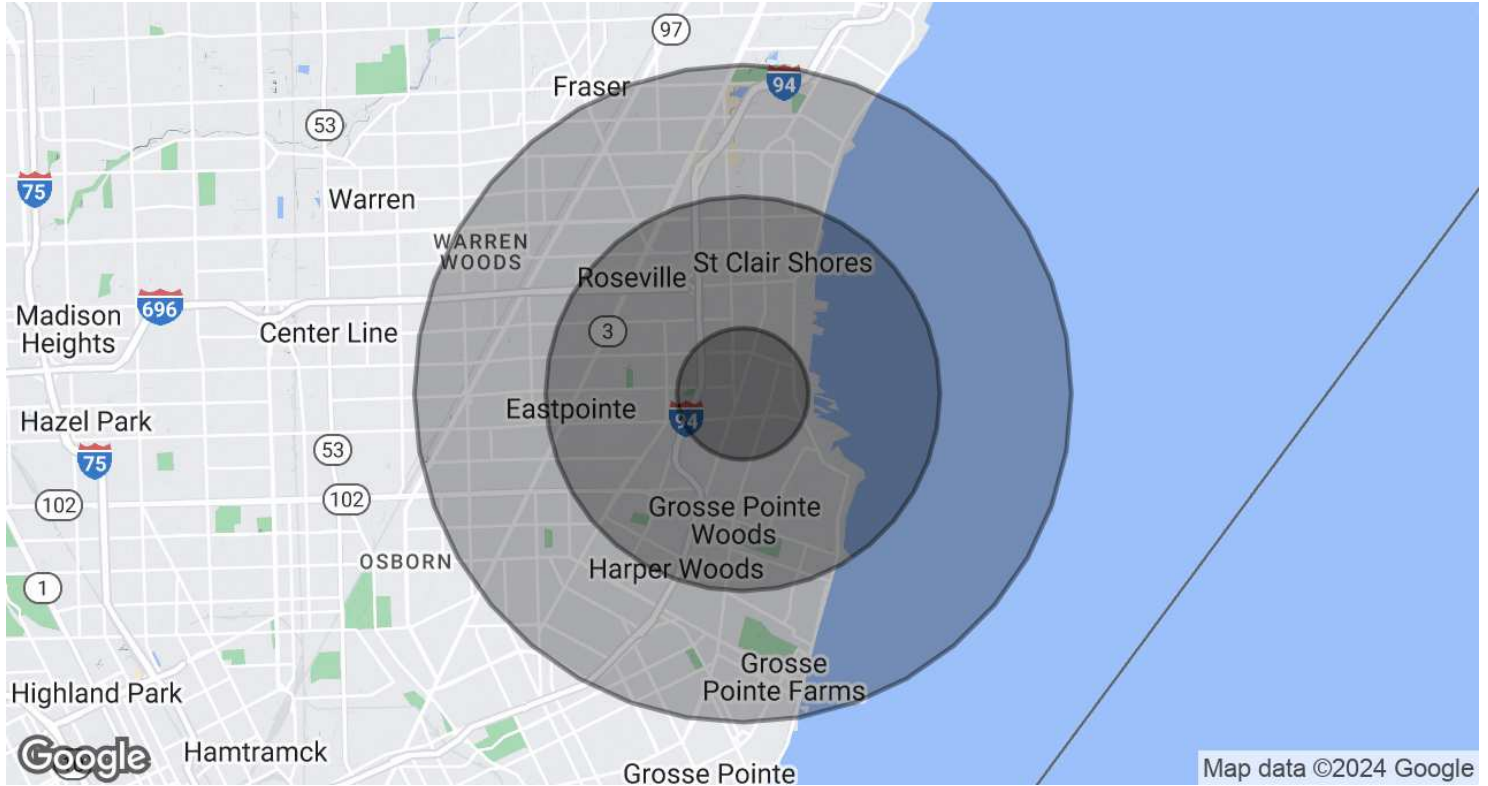


Phillip Myers SENIOR ASSOCIATE
D: 248.281.9904 | C: 586.242.4047
phil@pacommercial.com

John E. De Wald, CPA PRINCIPAL
D: 248.663.0504 | C: 313.510.3777
john@pacommercial.com

We obtained the information above from sources we believe to be reliable. However, we have not verified its accuracy and make no guarantee, warranty or representation about it. It is submitted subject to the possibility of errors, omissions, change of price, rental or other conditions, prior sale, lease or financing, or withdrawal without notice. We include projections, opinions, assumptions or estimates for example only, and they may not represent current, past or future performance of the property. You and your tax and legal advisors should conduct your own investigation of the property and transaction.

DEMOGRAPHICS MAP & REPORT



POPULATION	1 MILE	3 MILES	5 MILES
Total Population	14,002	115,308	262,834
Average Age	44.8	41.9	39.1
Average Age (Male)	43.9	40.1	37.5
Average Age (Female)	46.2	44.4	40.9
HOUSEHOLDS & INCOME	1 MILE	3 MILES	5 MILES
Total Households	6,737	51,751	119,482
# of Persons per HH	2.1	2.2	2.2
Average HH Income	\$70,526	\$70,937	\$65,034
Average House Value	\$140,781	\$137,390	\$124,604

* Demographic data derived from 2020 ACS - US Census

24000 - 24090 HARPER AVE, ST CLAIR SHORES, MI 48080 // FOR LEASE

CONTACT US



FOR MORE INFORMATION, PLEASE CONTACT:



Phillip Myers
SENIOR ASSOCIATE

D: 248.281.9904
C: 586.242.4047
phil@pacommercial.com



John E. De Wald, CPA
PRINCIPAL

D: 248.663.0504
C: 313.510.3777
johnd@pacommercial.com

P.A. Commercial

26555 Evergreen Road, Suite 1500
Southfield, MI 48076

P: 248.358.0100

F: 248.358.5300

pacommercial.com

Follow Us!



 **P.A. COMMERCIAL**
Corporate & Investment Real Estate

We obtained the information above from sources we believe to be reliable. However, we have not verified its accuracy and make no guarantee, warranty or representation about it. It is submitted subject to the possibility of errors, omissions, change of price, rental or other conditions, prior sale, lease or financing, or withdrawal without notice. We include projections, opinions, assumptions or estimates for example only, and they may not represent current, past or future performance of the property. You and your tax and legal advisors should conduct your own investigation of the property and transaction.