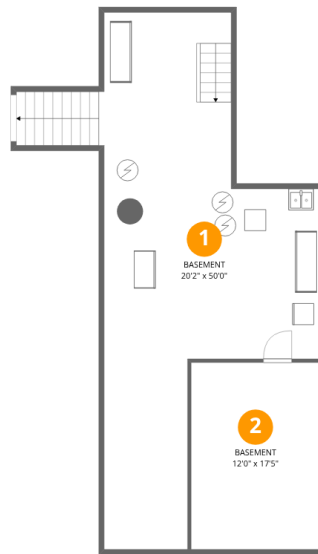


Home data report

160 Creamery Road, South Westerlo, Albany County, New York,
United States, 12083



Room dimensions

Floor 1 Below grade

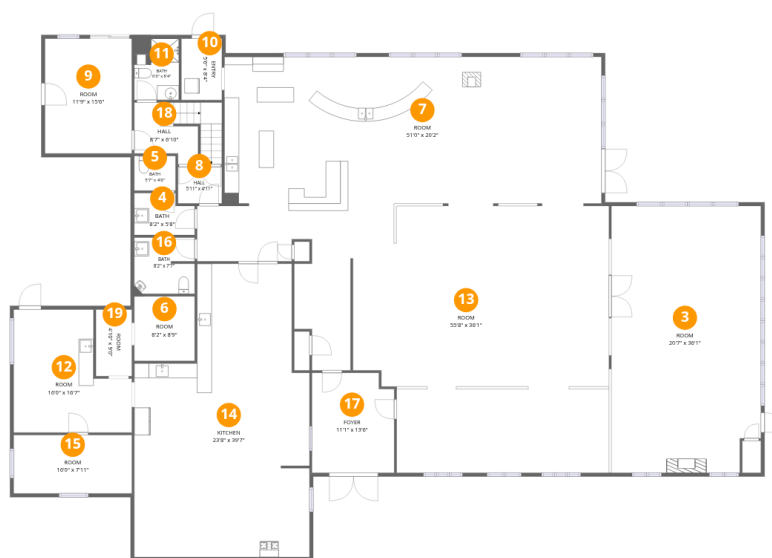
Total:0sqft

Excluded: 911sqft

#		Dimensions	sqft	Counted as living area
1	Basement	20'2" x 50'0"	692 sq. ft	No
2	Basement	12'0" x 17'5"	209 sq. ft	No

Home data report

160 Creamery Road, South Westerlo, Albany County, New York, United States, 12083



Room dimensions

Floor 2

Total:5216sqft Excluded: 0sqft

#		Dimensions	sqft	Counted as living area
3	Room	20'7" x 36'1"	726 sq. ft	Yes
4	Bath	8'2" x 5'8"	42 sq. ft	Yes
5	Bath	5'7" x 4'8"	26 sq. ft	Yes
6	Room	8'2" x 8'9"	71 sq. ft	Yes
7	Room	51'0" x 20'2"	1025 sq. ft	Yes
8	Hall	5'11" x 4'11"	29 sq. ft	Yes
9	Room	11'9" x 15'6"	182 sq. ft	Yes
10	Entry	5'6" x 8'4"	45 sq. ft	Yes
11	Bath	6'0" x 8'4"	49 sq. ft	Yes
12	Room	16'0" x 16'7"	217 sq. ft	Yes
13	Room	55'8" x 36'1"	1417 sq. ft	Yes

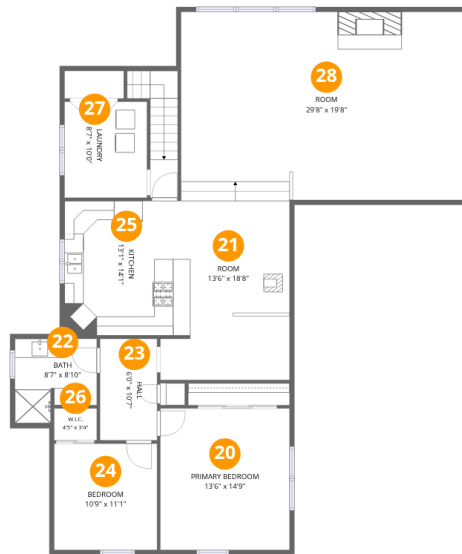
Home data report

**160 Creamery Road, South Westerlo, Albany County, New York,
United States, 12083**

#		Dimensions	sqft	Counted as living area
14	Kitchen	23'8" x 39'7"	788 sq. ft	Yes
15	Room	16'0" x 7'11"	126 sq. ft	Yes
16	Bath	8'2" x 7'7"	61 sq. ft	Yes
17	Foyer	11'1" x 13'6"	146 sq. ft	Yes
18	Hall	8'7" x 6'10"	87 sq. ft	Yes
19	Room	4'10" x 9'0"	44 sq. ft	Yes

Home data report

160 Creamery Road, South Westerlo, Albany County, New York, United States, 12083



Room dimensions

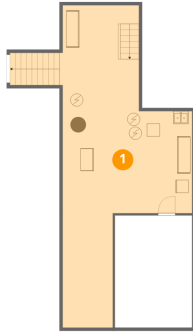
Floor 3

Total:1666sqft Excluded: 0sqft

#		Dimensions	sqft	Counted as living area
20	Primary Bedroom	13'6" x 14'9"	200 sq. ft	Yes
21	Room	13'6" x 18'8"	208 sq. ft	Yes
22	Bath	8'7" x 8'10"	66 sq. ft	Yes
23	Hall	6'0" x 10'7"	63 sq. ft	Yes
24	Bedroom	10'9" x 11'1"	120 sq. ft	Yes
25	Kitchen	13'1" x 14'1"	185 sq. ft	Yes
26	W.I.C.	4'5" x 3'4"	15 sq. ft	Yes
27	Laundry	8'7" x 10'0"	86 sq. ft	Yes
28	Room	29'8" x 19'8"	584 sq. ft	Yes

160 Creamery Road, South Westerlo, Albany County, New York,
United States, 12083

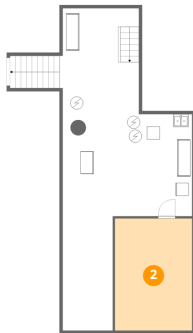
1 Floor 1 - Basement



Dimensions: 20'2" x 50'0"
Area: 692 sq. ft
Counted as living area: No

Heated: Yes
Finished: No
Enclosed: Yes
Contiguous: Yes
Permitted: Yes
Wet space: No
Addition: No
Conversion: No

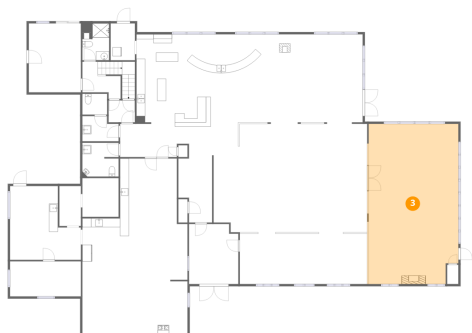
2 Floor 1 - Basement



Dimensions: 12'0" x 17'5"
Area: 209 sq. ft
Counted as living area: No

Heated: Yes
Finished: No
Enclosed: Yes
Contiguous: Yes
Permitted: Yes
Wet space: No
Addition: No
Conversion: No

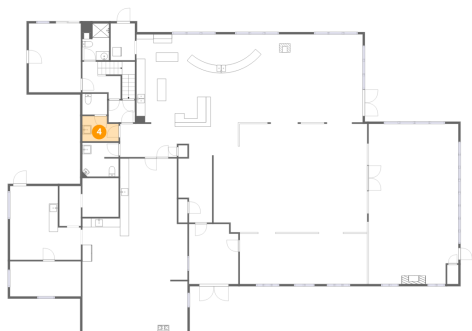
3 Floor 2 - Room



Dimensions: 20'7" x 36'1"
Area: 726 sq. ft
Counted as living area: Yes

Heated: Yes
Finished: Yes
Enclosed: Yes
Contiguous: Yes
Permitted: Yes
Wet space: No
Addition: No
Conversion: No

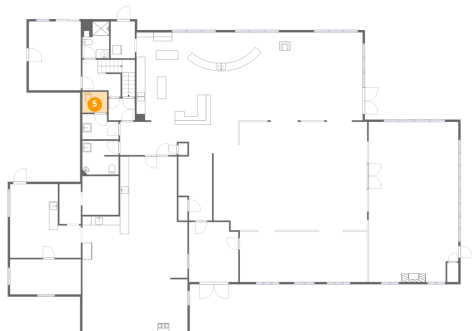
4 Floor 2 - Bath



Dimensions: 8'2" x 5'8"
Area: 42 sq. ft
Counted as living area: Yes

Heated: Yes
Finished: Yes
Enclosed: Yes
Contiguous: Yes
Permitted: Yes
Wet space: Yes
Addition: No
Conversion: No

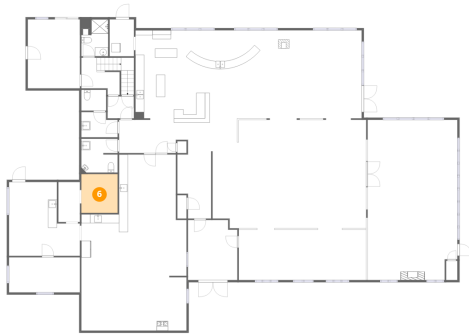
5 Floor 2 - Bath



Dimensions: 5'7" x 4'8"
Area: 26 sq. ft
Counted as living area: Yes

Heated: Yes
Finished: Yes
Enclosed: Yes
Contiguous: Yes
Permitted: Yes
Wet space: Yes
Addition: No
Conversion: No

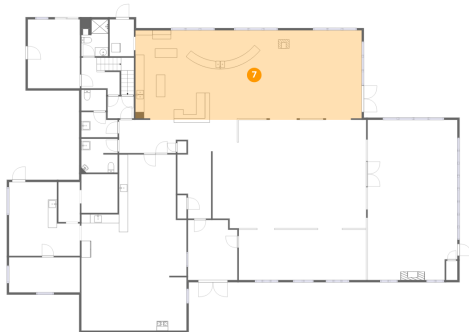
6 Floor 2 - Room



Dimensions: 8'2" x 8'9"
Area: 71 sq. ft
Counted as living area: Yes

Heated: Yes
Finished: Yes
Enclosed: Yes
Contiguous: Yes
Permitted: Yes
Wet space: No
Addition: No
Conversion: No

7 Floor 2 - Room



Dimensions: 51'0" x 20'2"
Area: 1025 sq. ft
Counted as living area: Yes

Heated: Yes
Finished: Yes
Enclosed: Yes
Contiguous: Yes
Permitted: Yes
Wet space: No
Addition: No
Conversion: No

8 Floor 2 - Hall



Dimensions: 5'11" x 4'11"
Area: 29 sq. ft
Counted as living area: Yes

Heated: Yes
Finished: Yes
Enclosed: Yes
Contiguous: Yes
Permitted: Yes
Wet space: No
Addition: No
Conversion: No

9 Floor 2 - Room



Dimensions: 11'9" x 15'6"
Area: 182 sq. ft
Counted as living area: Yes

Heated: Yes
Finished: Yes
Enclosed: Yes
Contiguous: Yes
Permitted: Yes
Wet space: No
Addition: No
Conversion: No

10 Floor 2 - Entry



Dimensions: 5'6" x 8'4"
Area: 45 sq. ft
Counted as living area: Yes

Heated: Yes
Finished: Yes
Enclosed: Yes
Contiguous: Yes
Permitted: Yes
Wet space: No
Addition: No
Conversion: No

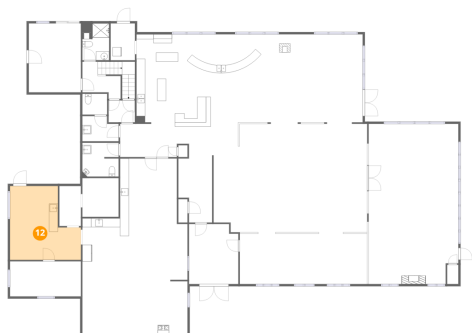
11 Floor 2 - Bath



Dimensions: 6'0" x 8'4"
Area: 49 sq. ft
Counted as living area: Yes

Heated: Yes
Finished: Yes
Enclosed: Yes
Contiguous: Yes
Permitted: Yes
Wet space: Yes
Addition: No
Conversion: No

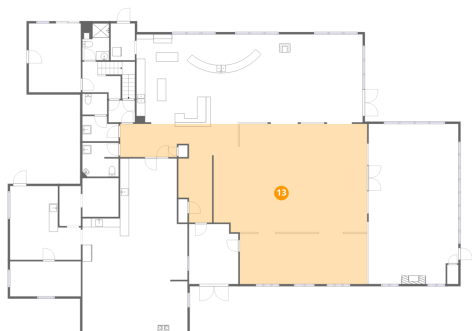
12 Floor 2 - Room



Dimensions: 16'0" x 16'7"
Area: 217 sq. ft
Counted as living area: Yes

Heated: Yes
Finished: Yes
Enclosed: Yes
Contiguous: Yes
Permitted: Yes
Wet space: No
Addition: No
Conversion: No

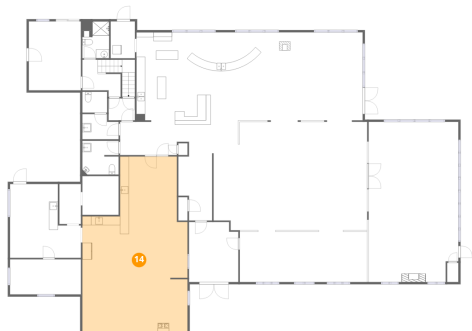
13 Floor 2 - Room



Dimensions: 55'8" x 36'1"
Area: 1417 sq. ft
Counted as living area: Yes

Heated: Yes
Finished: Yes
Enclosed: Yes
Contiguous: Yes
Permitted: Yes
Wet space: No
Addition: No
Conversion: No

14 Floor 2 - Kitchen



Dimensions: 23'8" x 39'7"
Area: 788 sq. ft
Counted as living area: Yes

Heated: Yes
Finished: Yes
Enclosed: Yes
Contiguous: Yes
Permitted: Yes
Wet space: No
Addition: No
Conversion: No

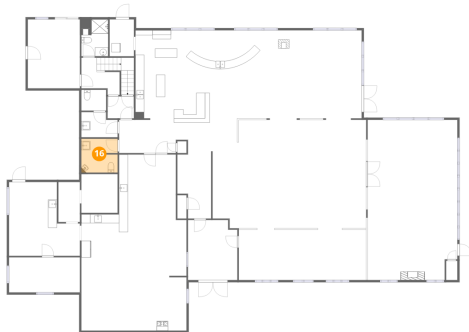
15 Floor 2 - Room



Dimensions: 16'0" x 7'11"
Area: 126 sq. ft
Counted as living area: Yes

Heated: Yes
Finished: Yes
Enclosed: Yes
Contiguous: Yes
Permitted: Yes
Wet space: No
Addition: No
Conversion: No

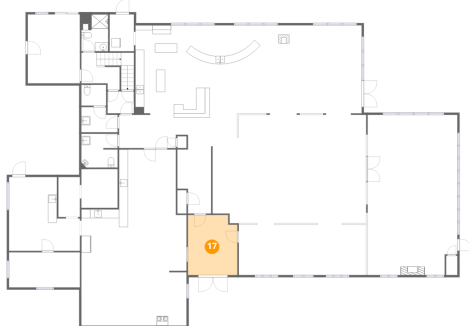
16 Floor 2 - Bath



Dimensions: 8'2" x 7'7"
Area: 61 sq. ft
Counted as living area: Yes

Heated: Yes
Finished: Yes
Enclosed: Yes
Contiguous: Yes
Permitted: Yes
Wet space: Yes
Addition: No
Conversion: No

17 Floor 2 - Foyer



Dimensions: 11'1" x 13'6"
Area: 146 sq. ft
Counted as living area: Yes

Heated: Yes
Finished: Yes
Enclosed: Yes
Contiguous: Yes
Permitted: Yes
Wet space: No
Addition: No
Conversion: No

160 Creamery Road, South Westerlo, Albany County, New York,
United States, 12083

18 Floor 2 - Hall



Dimensions: 8'7" x 6'10"
Area: 87 sq. ft
Counted as living area: Yes

Heated: Yes
Finished: Yes
Enclosed: Yes
Contiguous: Yes
Permitted: Yes
Wet space: No
Addition: No
Conversion: No

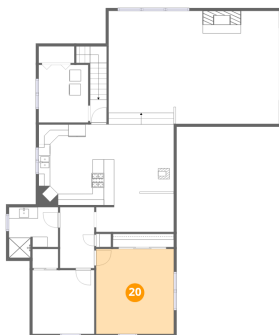
19 Floor 2 - Room



Dimensions: 4'10" x 9'0"
Area: 44 sq. ft
Counted as living area: Yes

Heated: Yes
Finished: Yes
Enclosed: Yes
Contiguous: Yes
Permitted: Yes
Wet space: No
Addition: No
Conversion: No

20 Floor 3 - Primary Bedroom

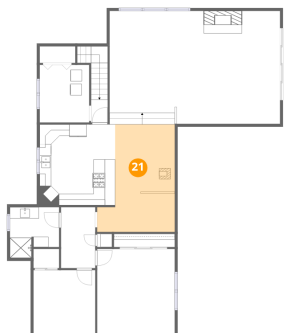


Dimensions: 13'6" x 14'9"
Area: 200 sq. ft
Counted as living area: Yes

Heated: Yes
Finished: Yes
Enclosed: Yes
Contiguous: Yes
Permitted: Yes
Wet space: No
Addition: No
Conversion: No

160 Creamery Road, South Westerlo, Albany County, New York,
United States, 12083

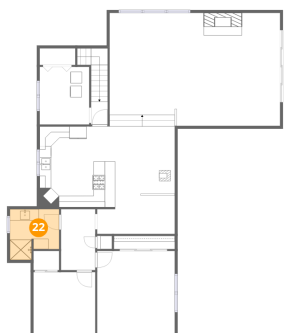
21 Floor 3 - Room



Dimensions: 13'6" x 18'8"
Area: 208 sq. ft
Counted as living area: Yes

Heated: Yes
Finished: Yes
Enclosed: Yes
Contiguous: Yes
Permitted: Yes
Wet space: No
Addition: No
Conversion: No

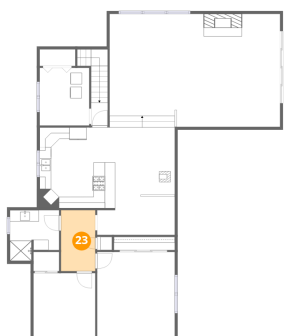
22 Floor 3 - Bath



Dimensions: 8'7" x 8'10"
Area: 66 sq. ft
Counted as living area: Yes

Heated: Yes
Finished: Yes
Enclosed: Yes
Contiguous: Yes
Permitted: Yes
Wet space: Yes
Addition: No
Conversion: No

23 Floor 3 - Hall

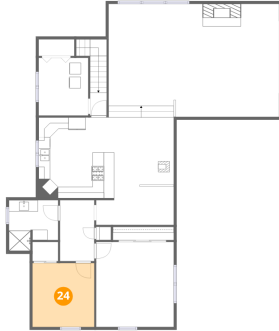


Dimensions: 6'0" x 10'7"
Area: 63 sq. ft
Counted as living area: Yes

Heated: Yes
Finished: Yes
Enclosed: Yes
Contiguous: Yes
Permitted: Yes
Wet space: No
Addition: No
Conversion: No

160 Creamery Road, South Westerlo, Albany County, New York,
United States, 12083

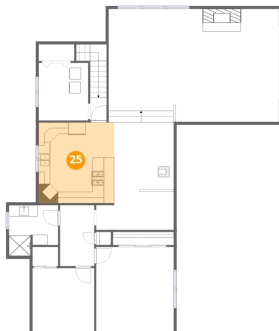
24 Floor 3 - Bedroom



Dimensions: 10'9" x 11'1"
Area: 120 sq. ft
Counted as living area: Yes

Heated: Yes
Finished: Yes
Enclosed: Yes
Contiguous: Yes
Permitted: Yes
Wet space: No
Addition: No
Conversion: No

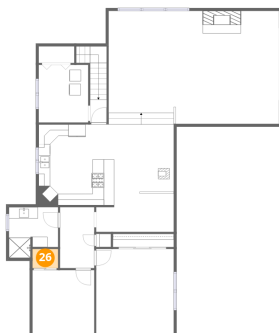
25 Floor 3 - Kitchen



Dimensions: 13'1" x 14'1"
Area: 185 sq. ft
Counted as living area: Yes

Heated: Yes
Finished: Yes
Enclosed: Yes
Contiguous: Yes
Permitted: Yes
Wet space: No
Addition: No
Conversion: No

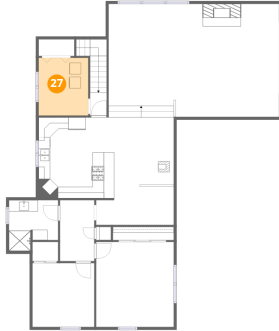
26 Floor 3 - W.I.C.



Dimensions: 4'5" x 3'4"
Area: 15 sq. ft
Counted as living area: Yes

Heated: Yes
Finished: Yes
Enclosed: Yes
Contiguous: Yes
Permitted: Yes
Wet space: No
Addition: No
Conversion: No

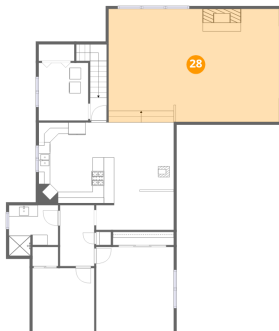
27 Floor 3 - Laundry



Dimensions: 8'7" x 10'0"
Area: 86 sq. ft
Counted as living area: Yes

Heated: Yes
Finished: Yes
Enclosed: Yes
Contiguous: Yes
Permitted: Yes
Wet space: No
Addition: No
Conversion: No

28 Floor 3 - Room



Dimensions: 29'8" x 19'8"
Area: 584 sq. ft
Counted as living area: Yes

Heated: Yes
Finished: Yes
Enclosed: Yes
Contiguous: Yes
Permitted: Yes
Wet space: No
Addition: No
Conversion: No