

10 CORPORATE CENTER

10201-10235 S 51st St
Phoenix, AZ



FOR LEASE | SPEC SUITE AVAILABLE

CONTACT US: **PHILIP WURTH, CCIM**
+1 602 369 9261
philip.wurth@cbre.com

ETHAN DIEDRICHSEN
+1 402 689 3895
ethan.diedrichsen@cbre.com

CBRE

10 CORPORATE CENTER

BUILDING SIZE

Bldg A | 10201 S 51st St | ±48,510 RSF | 2-story

Bldg B | 10235 S 51st St | ±25,282 RSF | 1-story

AVAILABILITY

Suite A110 ±655 RSF

Suite A190 ±2,098 RSF SPEC SUITE

Suite A220 ±1,166 RSF

Suite A257 ±800 RSF

Suite B110 ±2,186 RSF

Suite B115 ±2,654 RSF

Contiguous Space ±4,840 RSF

RATE

\$19.50/SF/YR, plus electric

PARKING

Parking Ratio | 4/1,000 SF

Covered Parking Ratio | 1/1,000 SF

Covered, Reserved Parking Available

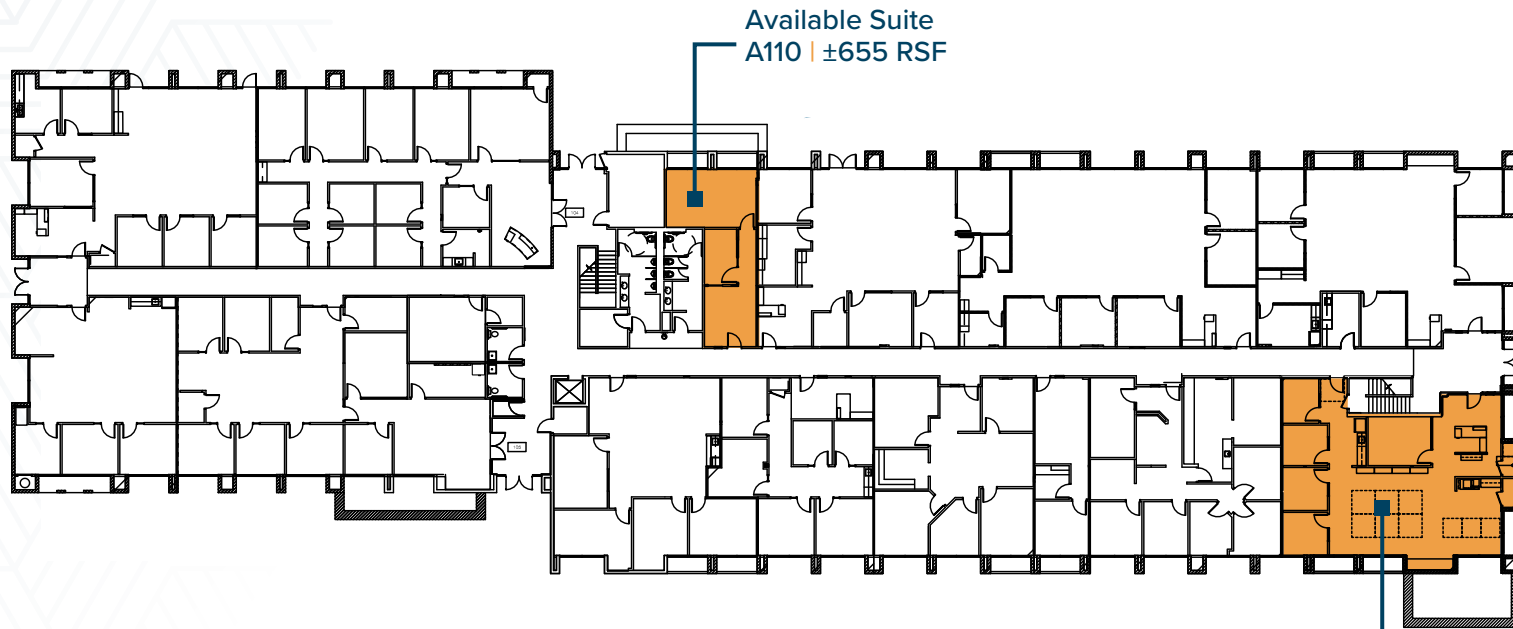


BUILDING FEATURES

- Highly visible building signage fronts I-10
- Lighted monument sign fronts 51st Street
- Beautiful four-sided architecture offers an abundance of natural light
- Built-out suites with immediate occupancy
- Common area conference and break rooms
- Recent Renovations include:
 - > Landscape
 - > Exterior Paint
 - > Lobbies
 - > Restrooms

CBRE

FLOOR PLANS



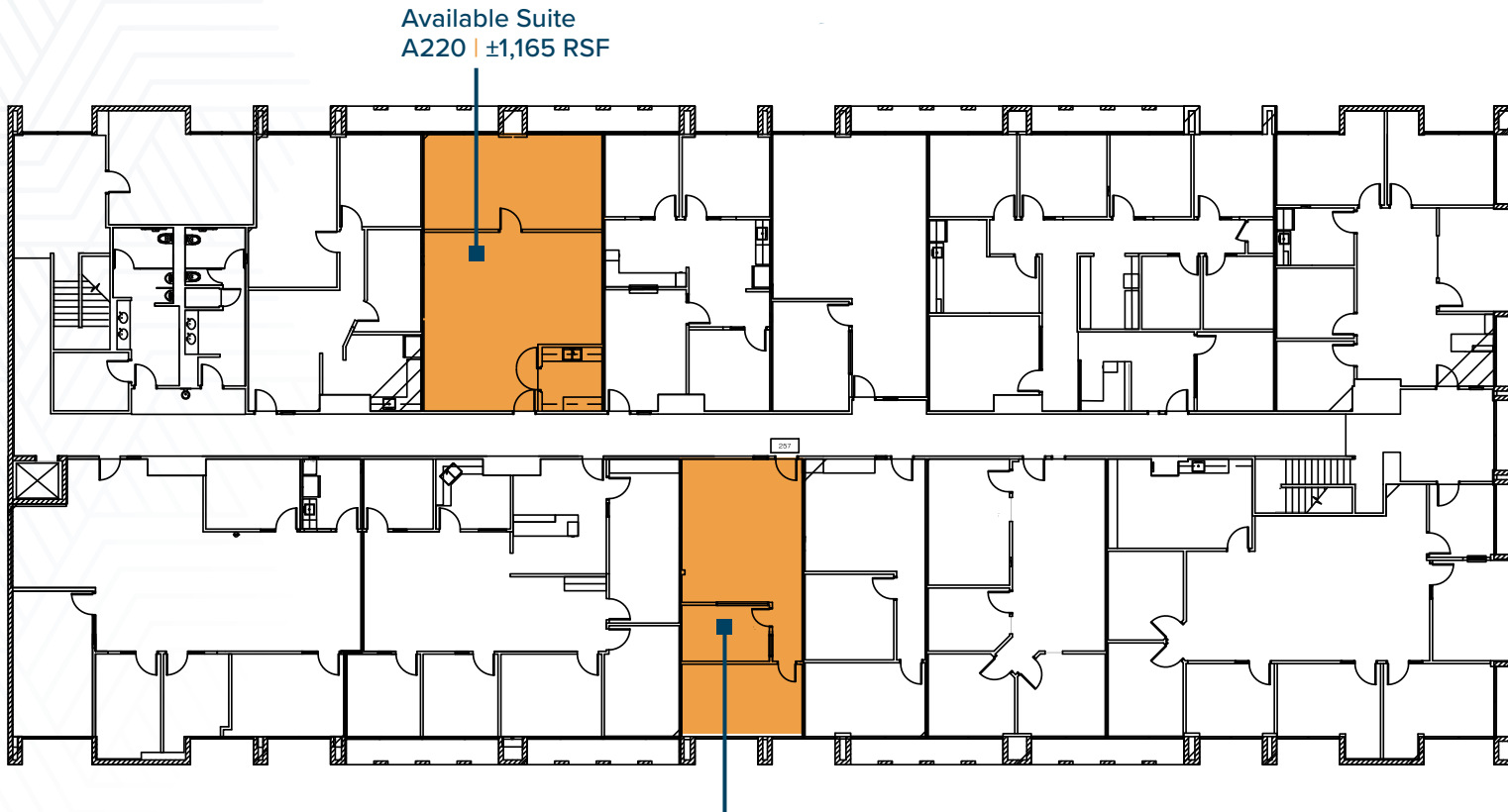
Available Suite
A110 | ±655 RSF

BLDG A
1ST FLOOR

Available Suite
A190 | ±2,098 RSF
Spec Suite

← N
NOT TO
SCALE

FLOOR PLANS



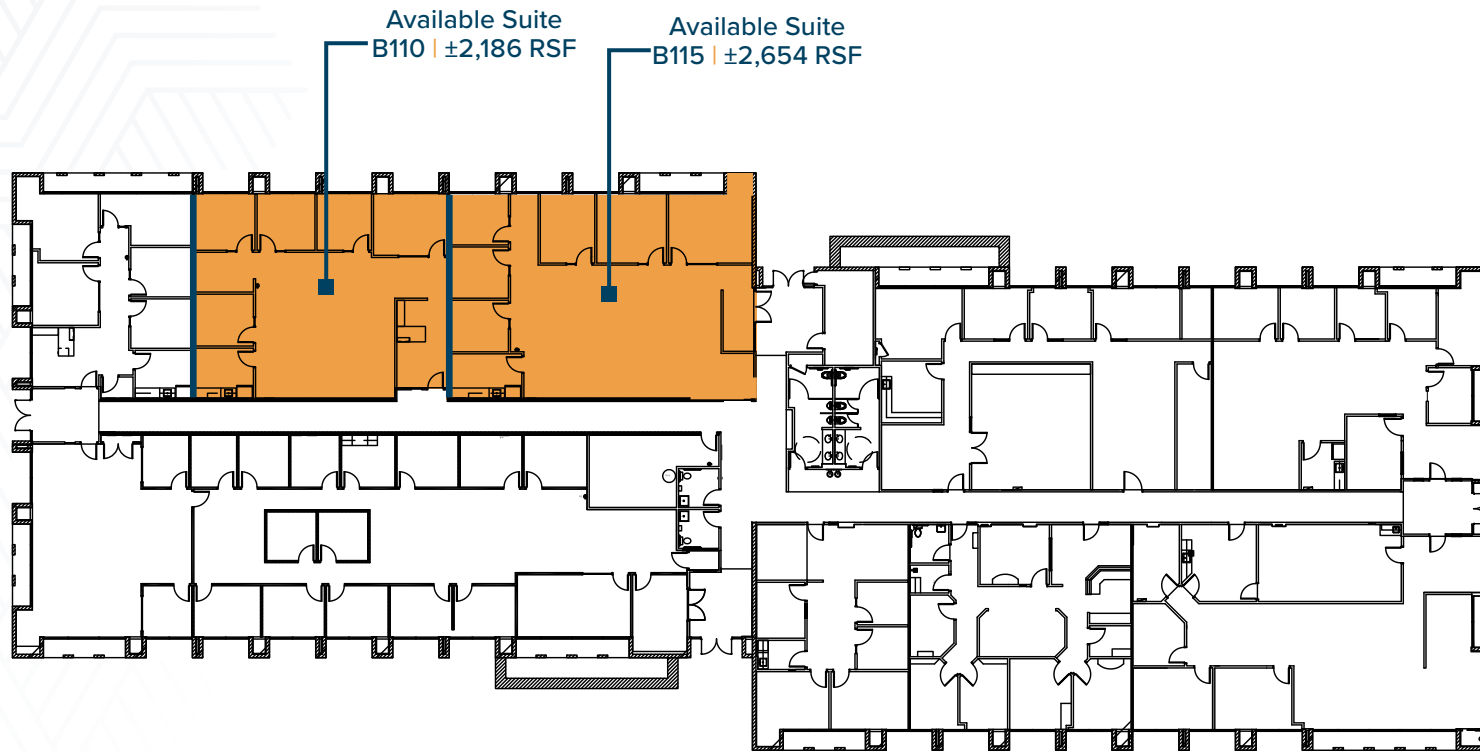
Available Suite
A220 | ±1,165 RSF

BLDG A
2ND FLOOR

Available Suite
A257 | ±800 RSF



FLOOR PLANS

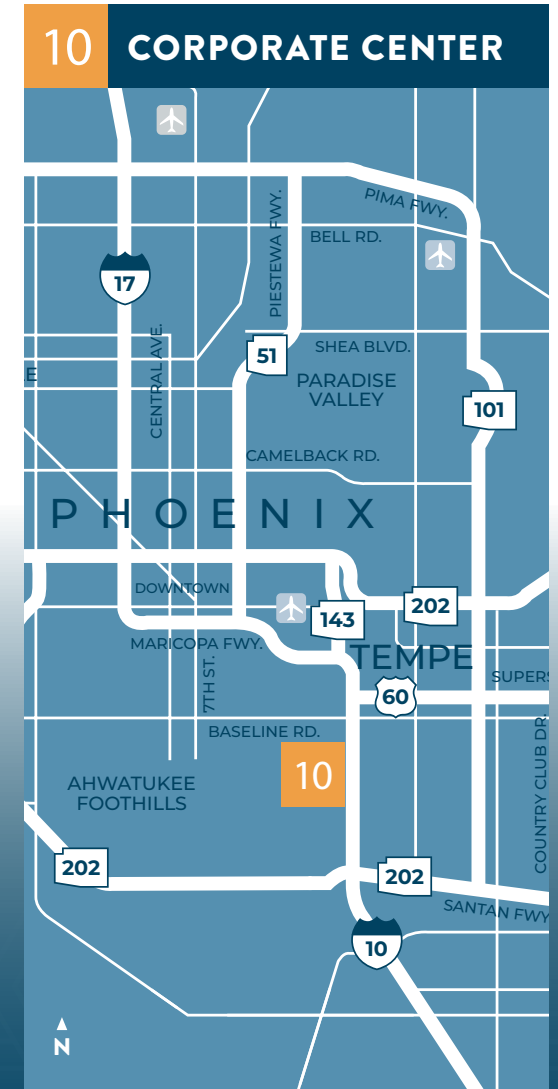


BLDG B
1ST FLOOR

← N
NOT TO
SCALE



10201-10235 S 51st St | Phoenix, AZ



CONTACT US:



PHILIP WURTH, CCIM

+1 602 369 9261
philip.wurth@cbre.com



ETHAN DIEDRICHSEN

+1 402 689 3895
ethan.diedrichsen@cbre.com

CBRE

© 2026 CBRE, Inc. All rights reserved. This information has been obtained from sources believed reliable but has not been verified for accuracy or completeness. CBRE, Inc. makes no guarantee, representation or warranty and accepts no responsibility or liability as to the accuracy, completeness, or reliability of the information contained herein. You should conduct a careful, independent investigation of the property and verify all information. Any reliance on this information is solely at your own risk.