

# 65,929 SF

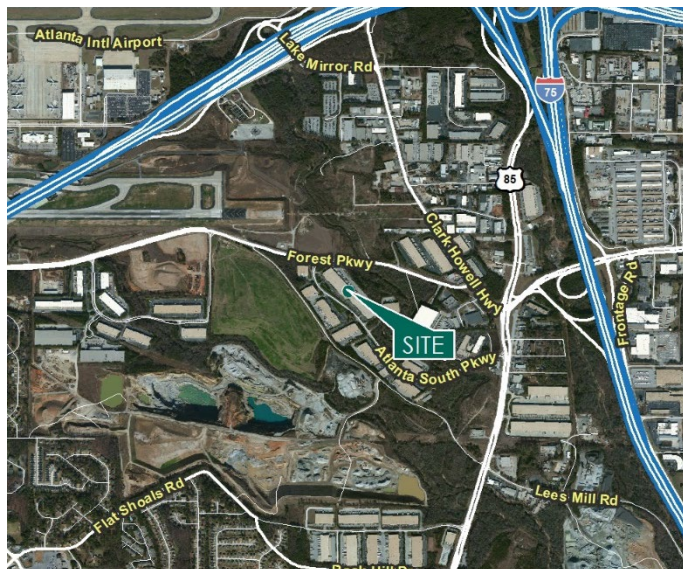
Industrial Space For Lease



## Prologis Atlanta South



795 Atlanta South Parkway, Suite 100  
Atlanta, GA 30349 USA



### LOCATION

- Immediate access to Hartsfield-Jackson International Airport
- Convenient access to:
  - I-75 (< 1 mi.)
  - I-285 (1.9 mi.)
  - I-85 (4.6 mi.)
- Connectivity to public transportation
- Clayton County Tier 1 Tax Incentives

### FACILITY

- 136,000 SF building
- 65,929 SF available
  - 4,464 SF office
- 22' minimum clear height
- Twenty-two (22) dock doors w/ levelers
- One (1) drive-in door
- 40' x 40' column spacing
- 66 auto parking spaces
- 12 trailer parking spaces
- ESFR sprinkler system
- LED office and warehouse lighting
- Power: 277/480V, 400A

### ADVANTAGES AND AMENITIES

- Prologis Clear Lease® – Know your lease expenses and capital costs with greater certainty before you sign



Scan the QR code for more info!

**Your single-source service for efficient move-in and operations: [prologisessentials.com](https://www.prologisessentials.com)**

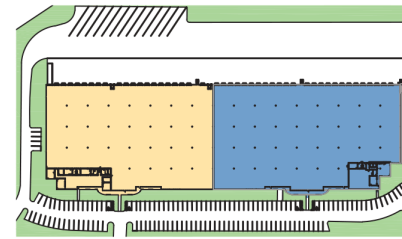
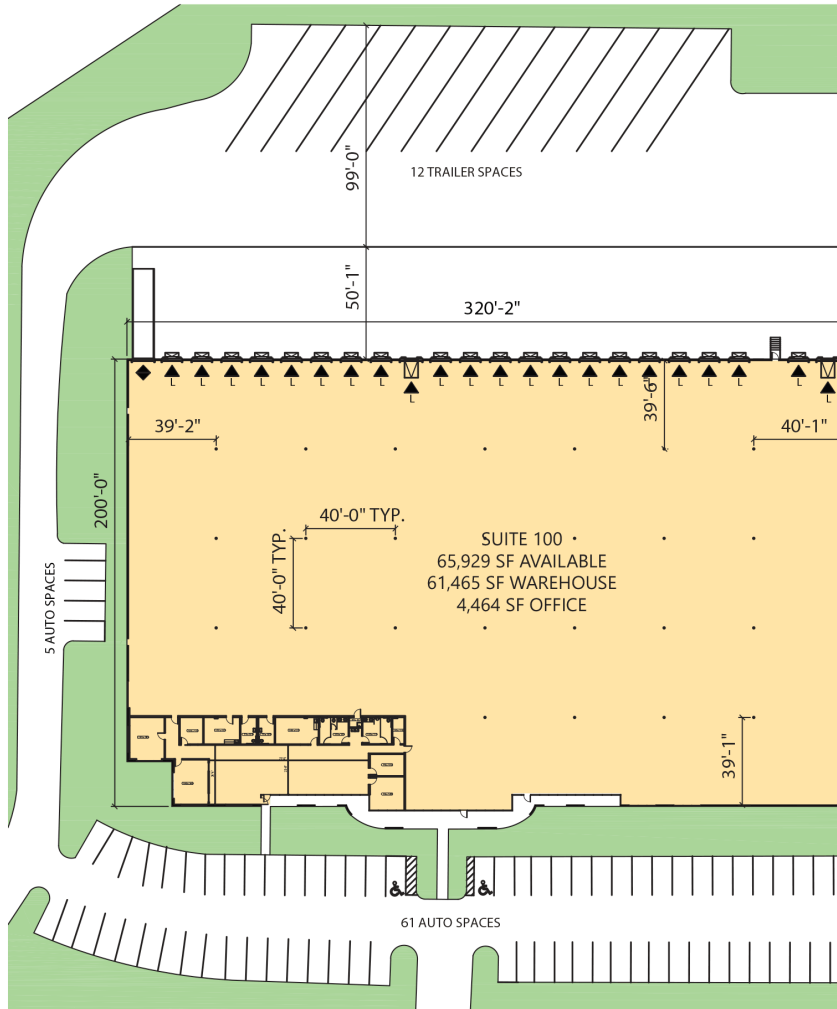
[www.prologis.com](https://www.prologis.com)

# 65,929 SF

## Industrial Space For Lease



# Prologis Atlanta South



KEY PLAN

**LEGEND:**

- ▲ DOCK DOOR
- ▲ DOCK DOOR W/LEVELER
- ◆ DRIVE-IN DOOR
- ▲ ON-GRADE DOOR
- ▨ EDGE OF DOCK LEVELER
- ▨ PIT LEVELER
- LAND
- LEASED AREA
- VACANT AREA



### Reliant

#### Alex McArthur

amcarthur@reliant-re.com  
ph +1 404 760 7420  
cell +1 404 405 0290  
3490 Piedmont Road NE  
Suite 1025  
Atlanta, GA 30305 USA

### Reliant

#### Mike Weinberger

mweinberger@reliant-re.com  
ph +1 404 760 7183  
cell +1 770 891 7235  
3490 Piedmont Road NE  
Suite 1025  
Atlanta, GA 30305 USA

### Reliant

#### Drew Venable

dvenable@reliant-re.com  
ph +1 404 760 7186  
cell +1 229 392 8745  
3490 Piedmont Road NE  
Suite 1025  
Atlanta, GA 30305 USA

### Prologis

#### Sarah Stafford

sstafford@prologis.com  
ph +1 404 760 7214  
cell +1 404 561 8378  
3350 Peachtree Road  
Suite 850  
Atlanta, GA 30326 USA