

ALTITUDE BUSINESS CENTRE

15790 Terminal Court
Chino, CA

FOR LEASE

BUILDING 5

±20,205 SF



LEASED BY



SITE PLAN

Available SF ±20,205 SF

Building Dimensions N/A

Office ±2,676 SF

Clear Height 30'

Column Spacing N/A

Loading Docks 2

Drive-Ins 2

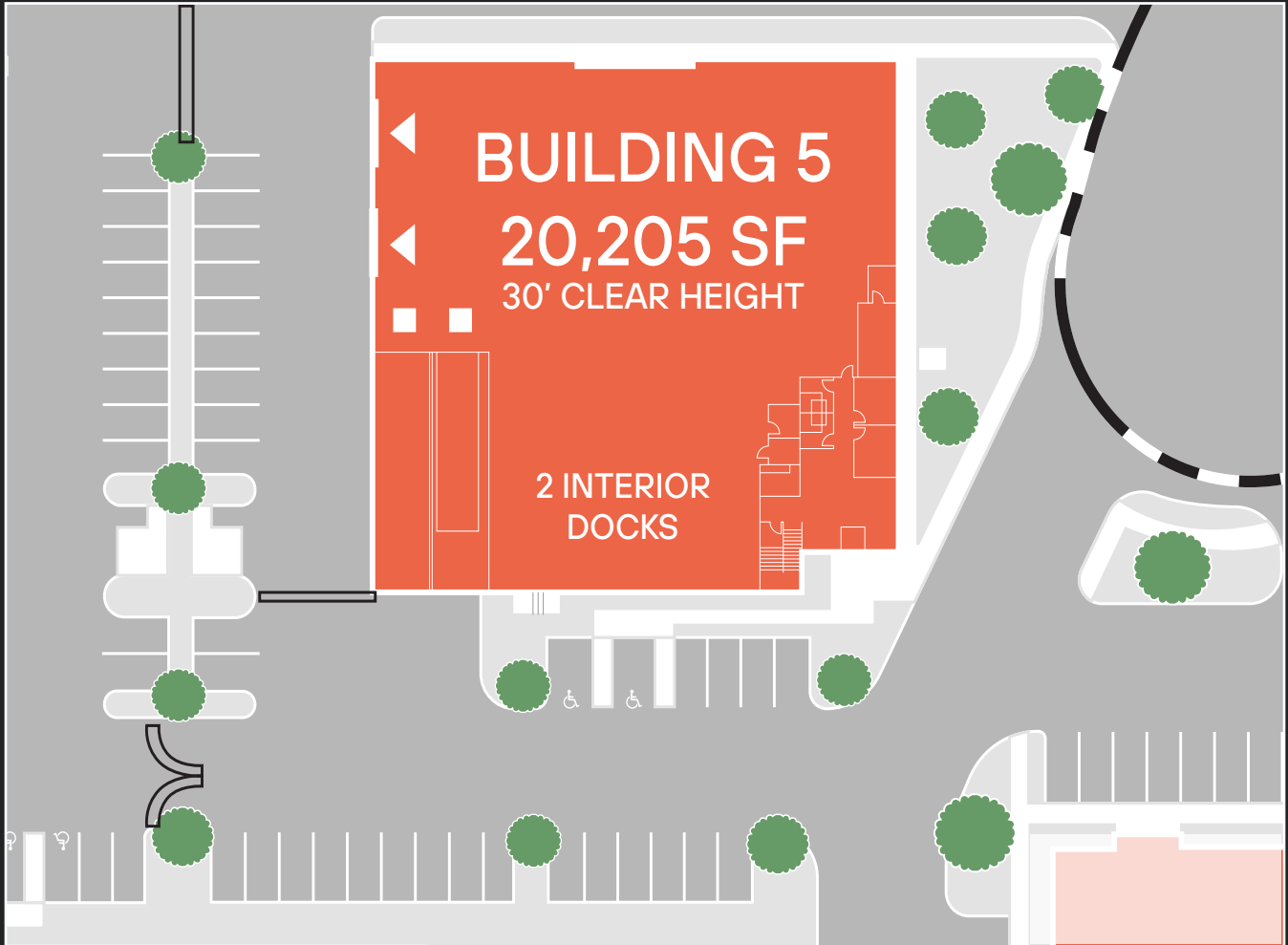
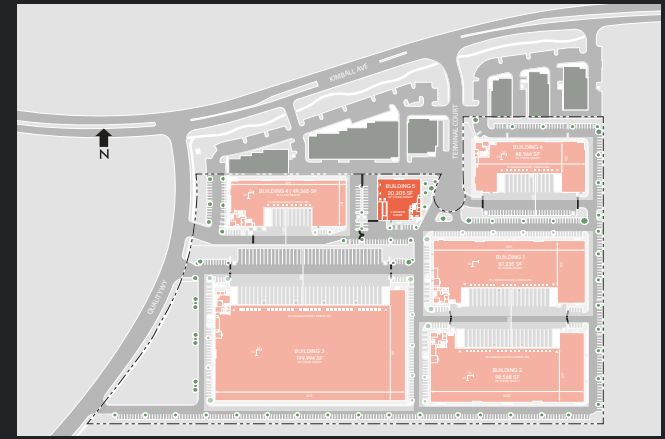
Truck Court Secured

Car Spaces ±32

Power 800 Amps Service with 800 UGPS

Lighting LED

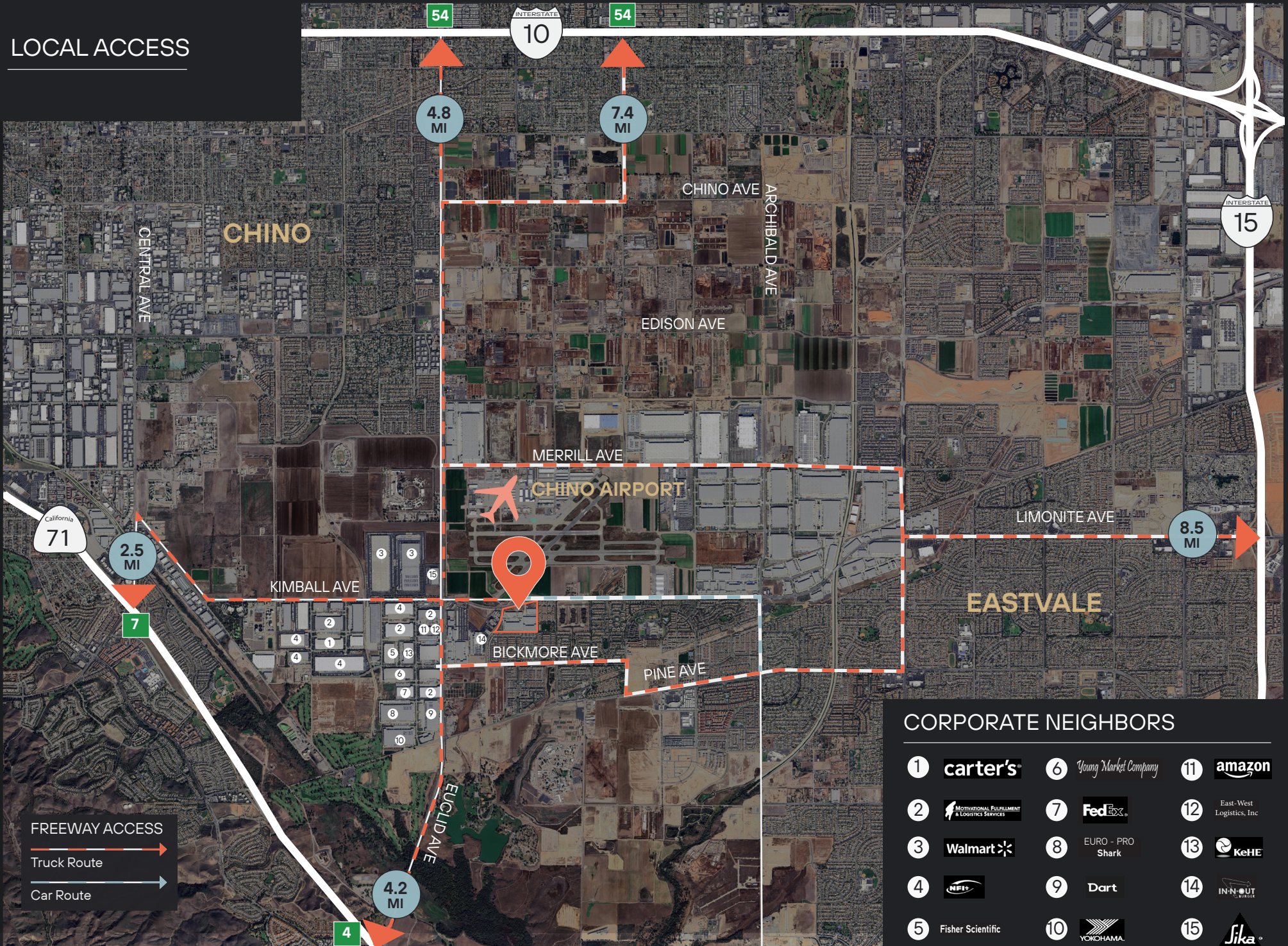
Fire Protection ESFR Sprinkler



FOR LEASE

±20,205 SF

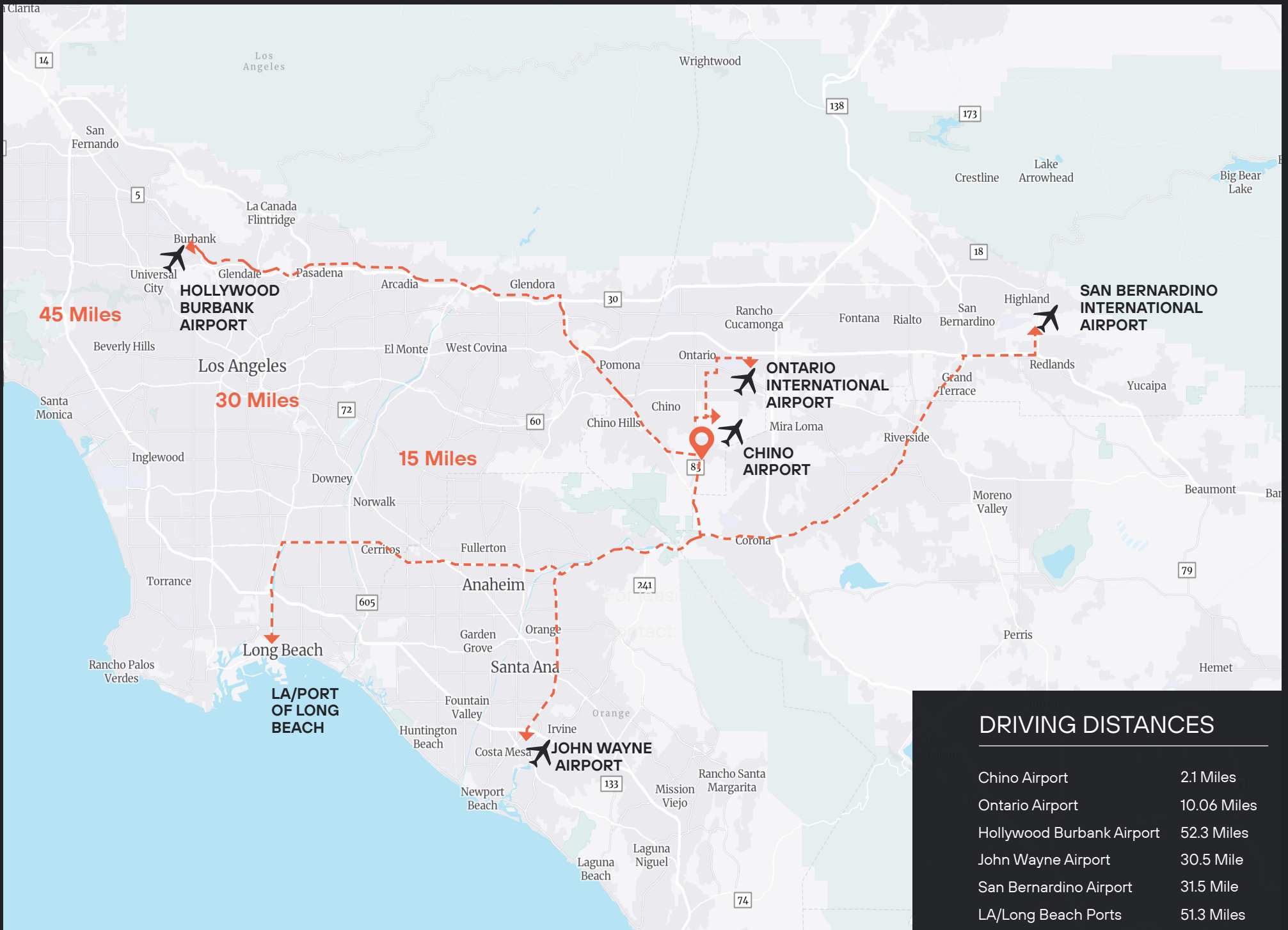
LOCAL ACCESS



FREEWAY ACCESS
 Truck Route
 Car Route

CORPORATE NEIGHBORS

- | | | |
|--|-------------------------------|------------------------------|
| 1 carter's | 6 <i>Young Market Company</i> | 11 amazon |
| 2 MOTIVATIONAL EQUIPMENT & LOGISTICS SERVICES | 7 FedEx | 12 East-West Logistics, Inc. |
| 3 Walmart | 8 EURO - PRO Shark | 13 KeHE |
| 4 MPFS | 9 Dart | 14 INN-OUT |
| 5 Fisher Scientific | 10 YOKOHAMA | 15 Sika |



DRIVING DISTANCES

Chino Airport	2.1 Miles
Ontario Airport	10.06 Miles
Hollywood Burbank Airport	52.3 Miles
John Wayne Airport	30.5 Mile
San Bernardino Airport	31.5 Mile
LA/Long Beach Ports	51.3 Miles

CONTACT INFORMATION



15790 Terminal Court
Chino, CA

THOMAS TAYLOR

thomas.taylor@colliers.com
(909) 612-2614

CA Lic. 00598896

SCOTT SANDERS

scott.sander@colliers.com
(909) 937-6322

CA Lic. 01481466

JOEY JONES

joey.jones@colliers.com
(909) 612-2628

CA Lic. 01952925

EVELYN MANNING

evelyn.manning@colliers.com
(909) 937-6357

CA Lic. 02062383

This document is for informational purposes only and does not constitute an offer or acceptance of a lease. Any lease agreement must be in writing and signed by the landlord. No representations or warranties are made except as expressly stated in a signed lease. Information is provided "as is" and may be subject to errors or change without notice.



LEASED BY

Colliers