

13398-13420 WEST STAR DR.
SHELBY TWP., MICHIGAN

INDUSTRIAL FOR LEASE
3,610 – 10,830 Square Feet Available



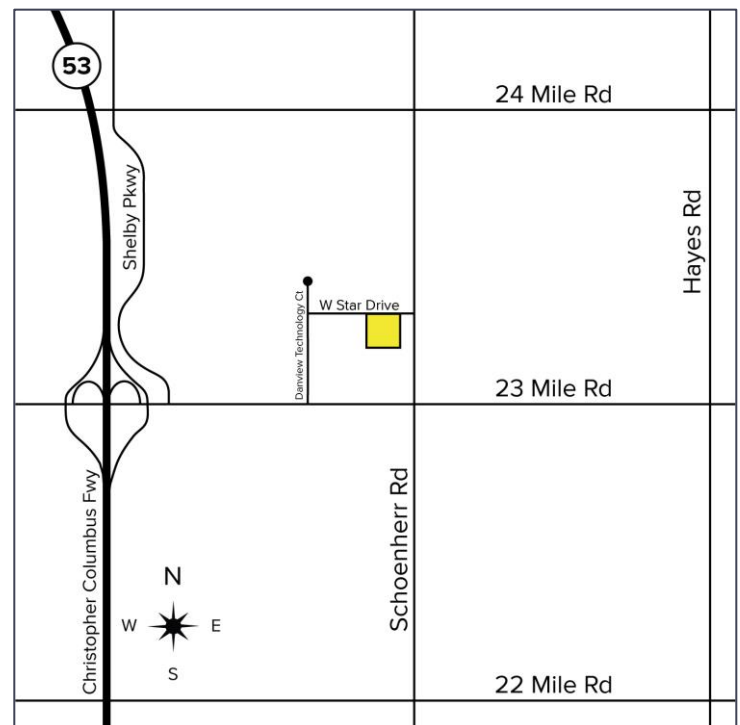
**SIGNATURE
ASSOCIATES**
KNOW SIGNATURE | KNOW RESULTS

HIGH-END MULTI-TENANT COMPLEX



PROPERTY FEATURES

- 3,610 – 10,830 square feet available
- 280 – 9,540 square feet of office
- 19' ceiling height
- (1) 12' x 14' grade level door per unit
- 3000 amps, 240 volts power
- Schoenherr Road exposure, just north of 23 Mile Road
- Great flexibility with (5) units available at 3,610 square feet each, units can be combined
- Some units are heavy with office area, which can be modified to suit or eliminated to create additional shop space
- Lease Rate: \$10.50 - \$12.50/sq. ft. Gross



For more information, please contact:

BEN WILKIEMEYER

(248) 359 0624

bwilkiemeyer@signatureassociates.com

PAUL SAAD

(248) 359 0652

psaad@signatureassociates.com

SIGNATURE ASSOCIATES

One Towne Square, Suite 1200

Southfield, MI 48076

www.signatureassociates.com

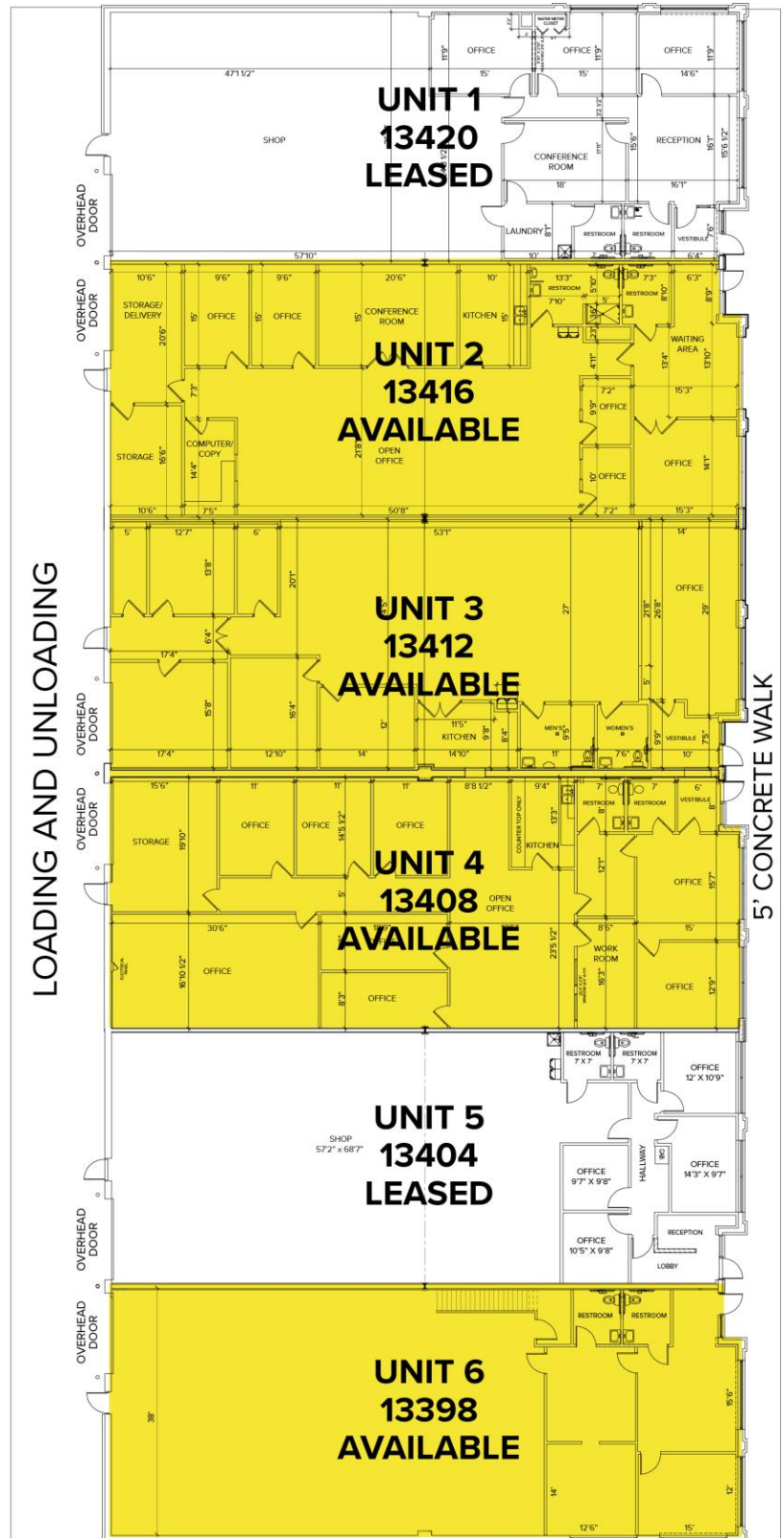
13398-13420 West Star Drive – Shelby Twp., MI

Industrial For Lease

3,610 – 10,830
Square Feet
AVAILABLE

Site Plan

AVAILABILITY		
UNIT	TOTAL SF	OFFICE SF
2	3,610	610 – 3,210
3	3,610	280 – 3,000
4	3,610	610 - 3,330
6	3,610	1,064



For more information, please contact:

BEN WILKIEMEYER

(248) 359 0624

bwilkiemeyer@signatureassociates.com

PAUL SAAD

(248) 359 0652

psaad@signatureassociates.com

SIGNATURE ASSOCIATES

One Towne Square, Suite 1200

Southfield, MI 48076

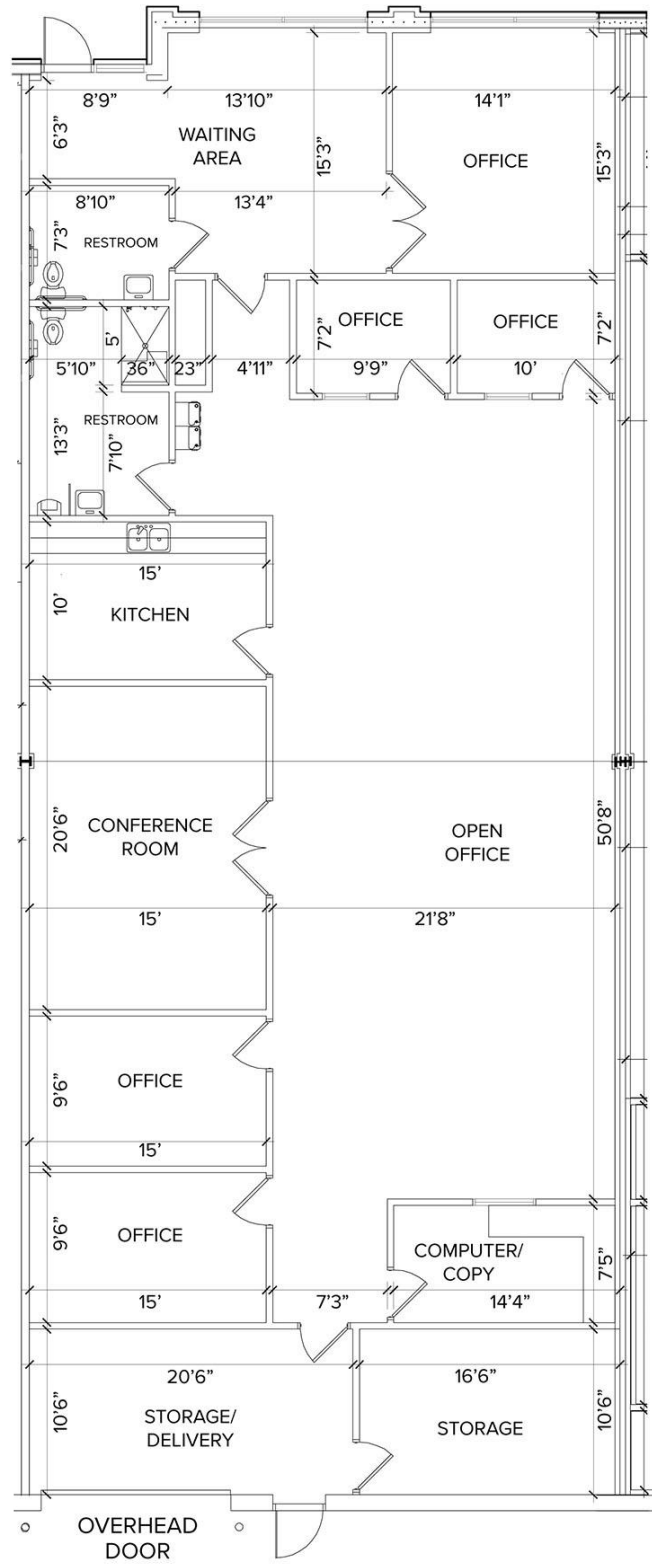
www.signatureassociates.com

13398-13420 West Star Drive – Shelby Twp., MI

Industrial For Lease

3,610 – 10,830
Square Feet
AVAILABLE

Floor Plan Unit 2



For more information, please contact:

BEN WILKIEMEYER

(248) 359 0624

bwilkiemeyer@signatureassociates.com

PAUL SAAD

(248) 359 0652

psaad@signatureassociates.com

SIGNATURE ASSOCIATES

One Towne Square, Suite 1200

Southfield, MI 48076

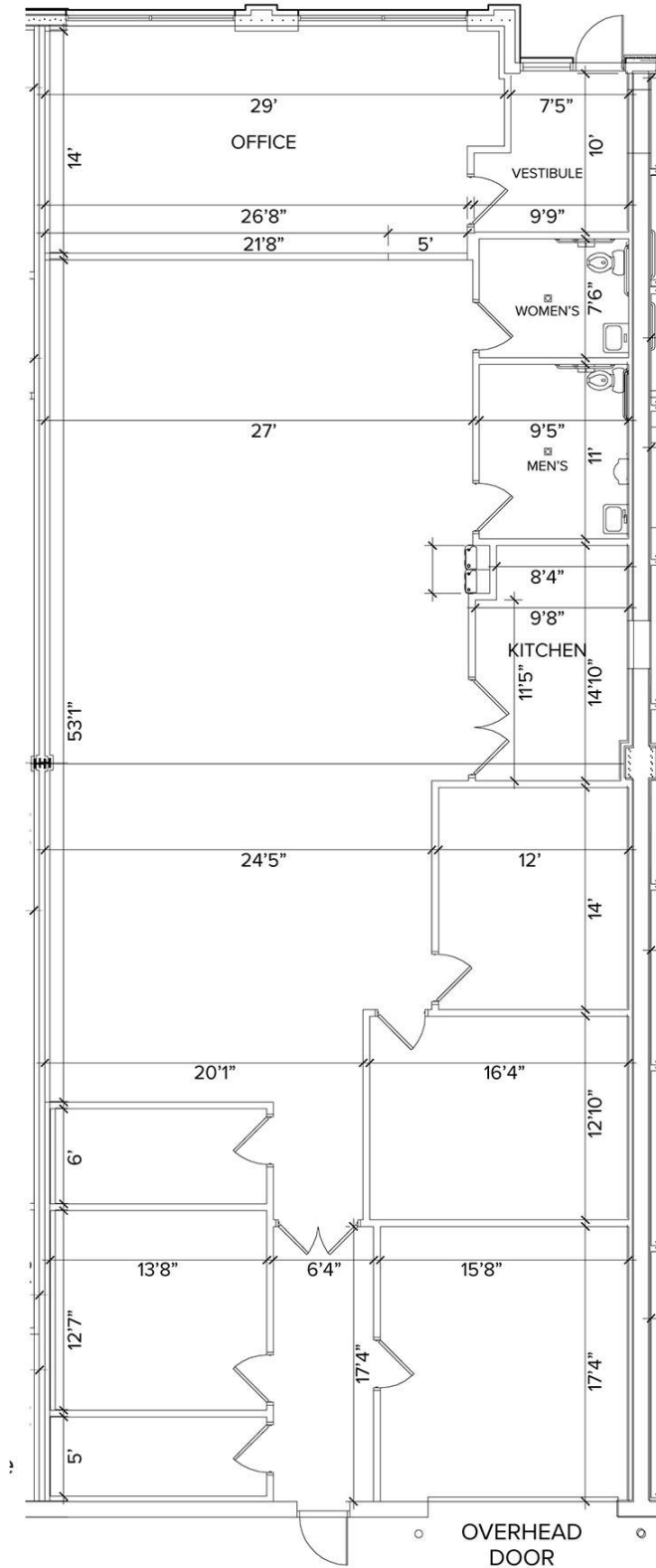
www.signatureassociates.com

13398-13420 West Star Drive – Shelby Twp., MI

Industrial For Lease

3,610 – 10,830
Square Feet
AVAILABLE

Floor Plan Unit 3



For more information, please contact:

BEN WILKIEMEYER

(248) 359 0624

bwilkiemeyer@signatureassociates.com

PAUL SAAD

(248) 359 0652

psaad@signatureassociates.com

SIGNATURE ASSOCIATES

One Towne Square, Suite 1200

Southfield, MI 48076

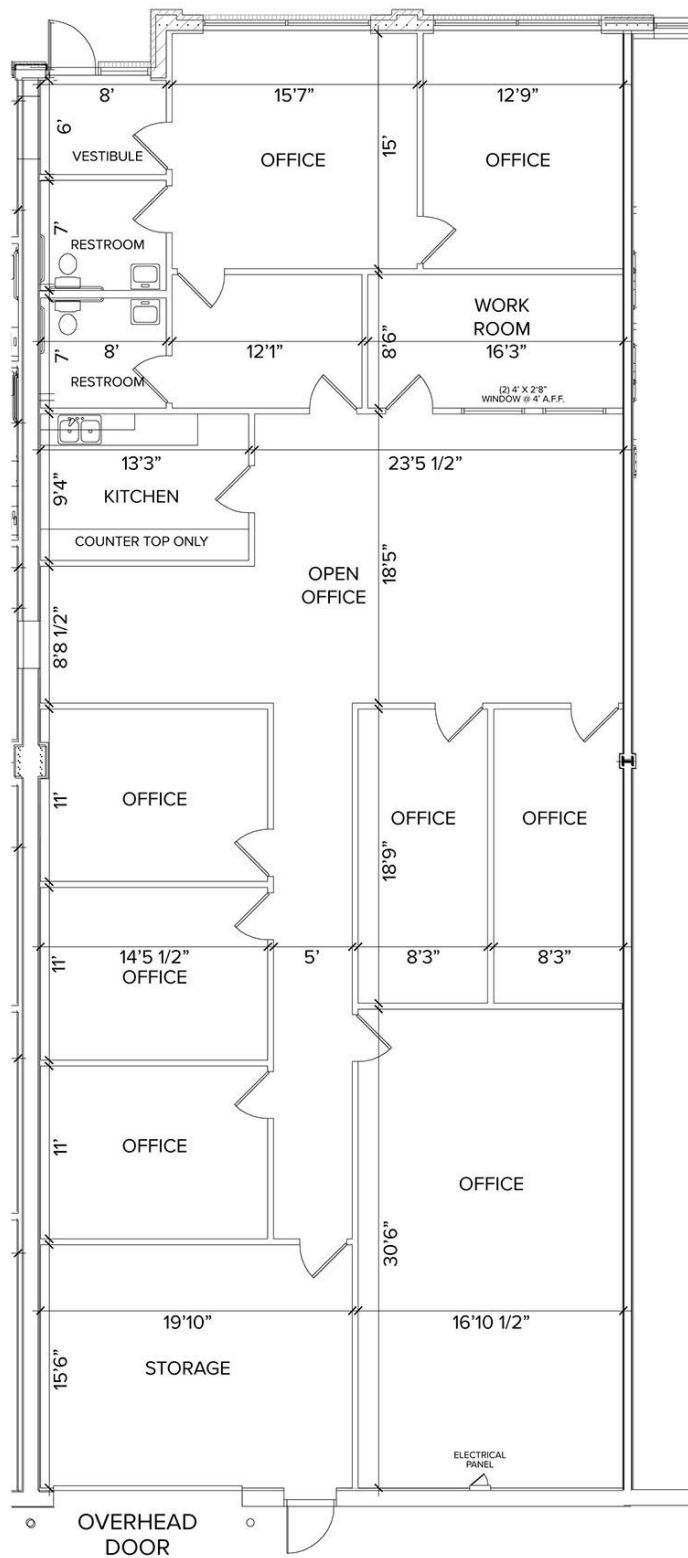
www.signatureassociates.com

13398-13420 West Star Drive – Shelby Twp., MI

Industrial For Lease

3,610 – 10,830
Square Feet
AVAILABLE

Floor Plan Unit 4



For more information, please contact:

BEN WILKIEMEYER

(248) 359 0624

bwilkiemeyer@signatureassociates.com

PAUL SAAD

(248) 359 0652

psaad@signatureassociates.com

SIGNATURE ASSOCIATES

One Towne Square, Suite 1200

Southfield, MI 48076

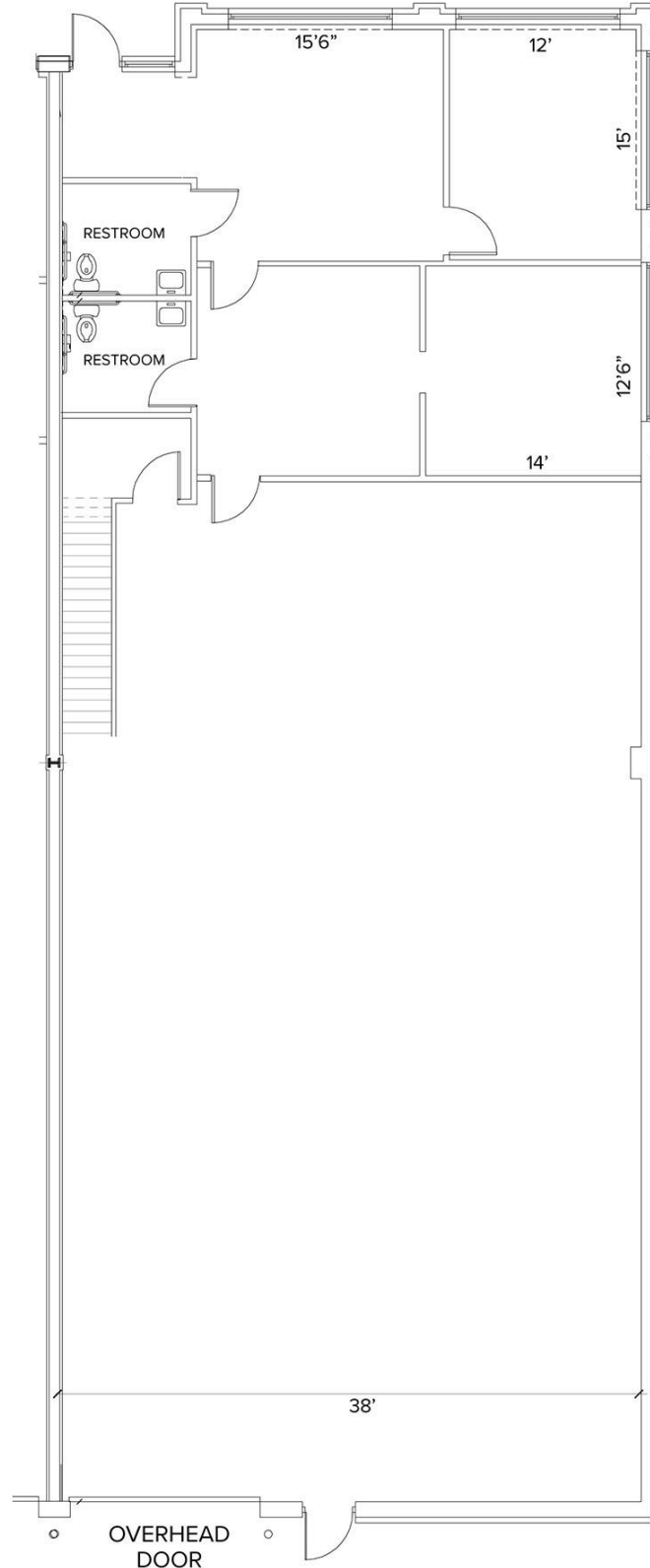
www.signatureassociates.com

13398-13420 West Star Drive – Shelby Twp., MI

Industrial For Lease

3,610 – 10,830
Square Feet
AVAILABLE

Floor Plan Unit 6



For more information, please contact:

BEN WILKIEMEYER

(248) 359 0624

bwilkiemeyer@signatureassociates.com

PAUL SAAD

(248) 359 0652

psaad@signatureassociates.com

SIGNATURE ASSOCIATES

One Towne Square, Suite 1200

Southfield, MI 48076

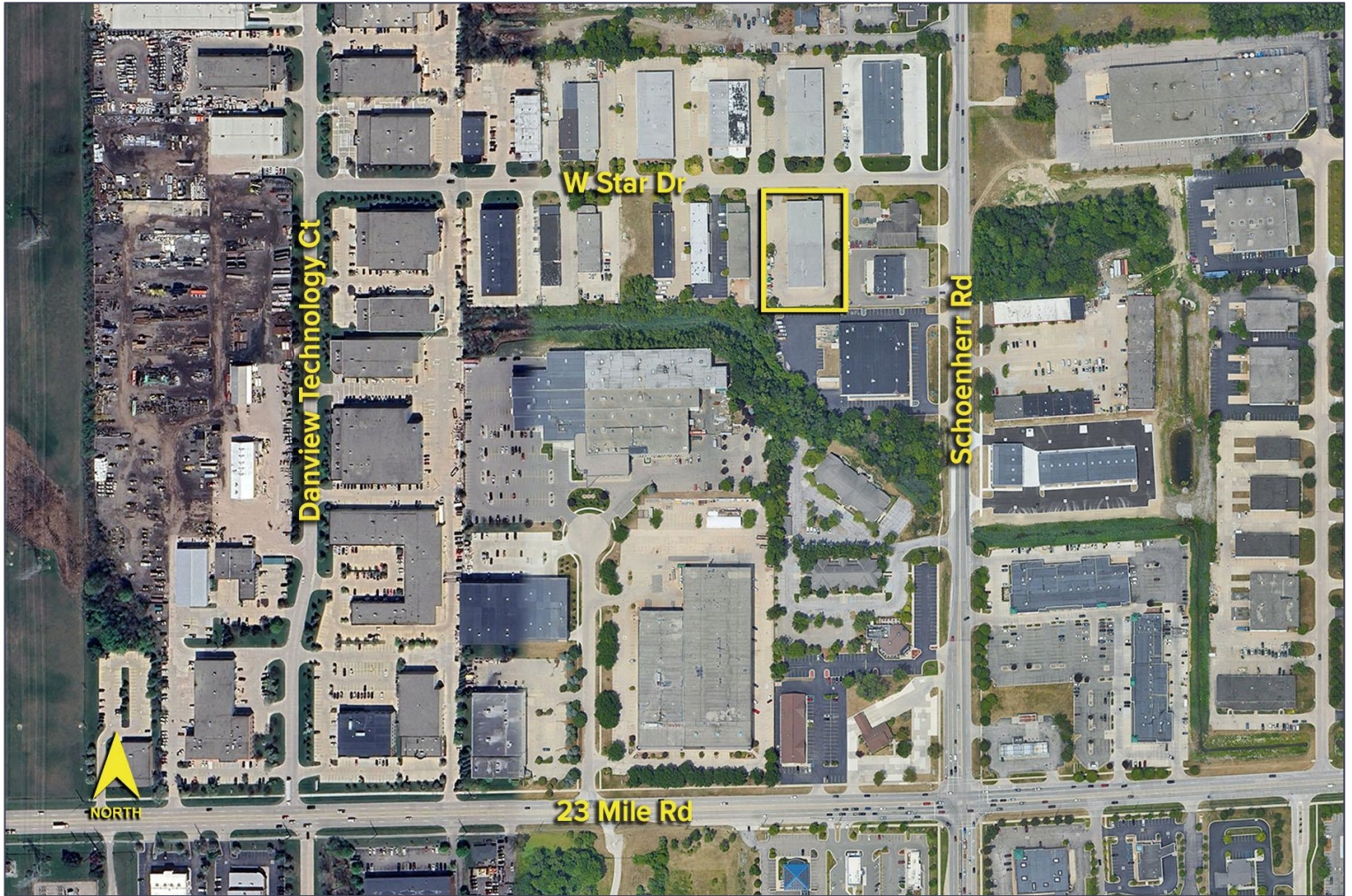
www.signatureassociates.com

13398-13420 West Star Drive – Shelby Twp., MI

Industrial For Lease

3,610 – 10,830
Square Feet
AVAILABLE

Aerial



For more information, please contact:

BEN WILKIEMEYER

(248) 359 0624

bwilkiemeyer@signatureassociates.com

PAUL SAAD

(248) 359 0652

psaad@signatureassociates.com

SIGNATURE ASSOCIATES

One Towne Square, Suite 1200

Southfield, MI 48076

www.signatureassociates.com