



FOR LEASE

REGION

COMMERCIAL REAL ESTATE

372 PASCO ROAD SPRINGFIELD, MA

Region Commercial Real Estate is pleased to offer, on an exclusive basis, approximately 66,000 square feet of industrial space for lease on Pasco Road in Springfield, MA, near Boston Road (Route 20).

This highly versatile industrial property consists of multiple buildings and a large outdoor yard area, well suited for warehouse, distribution, or light industrial users in the greater Springfield market. The property features ample loading and dock access, overhead doors, and dedicated truck parking, supporting efficient operations and logistics.

The interior includes a mix of office space and flexible warehouse area, allowing for a variety of user configurations. The site's location provides convenient access to major roadways and regional transportation routes, enhancing accessibility for both employees and distribution needs.

PRICE

\$5/SF NNN

ZONING

INDUSTRIAL A

TAXES

\$42,884

SIZE

66,000 SF

YEAR BUILT

1952

HEAT

GAS

ELECTRIC & GAS

EVERSOURCE

WATER & SEWER

MUNICIPAL

ACRES

4.32 AC

CONTACT

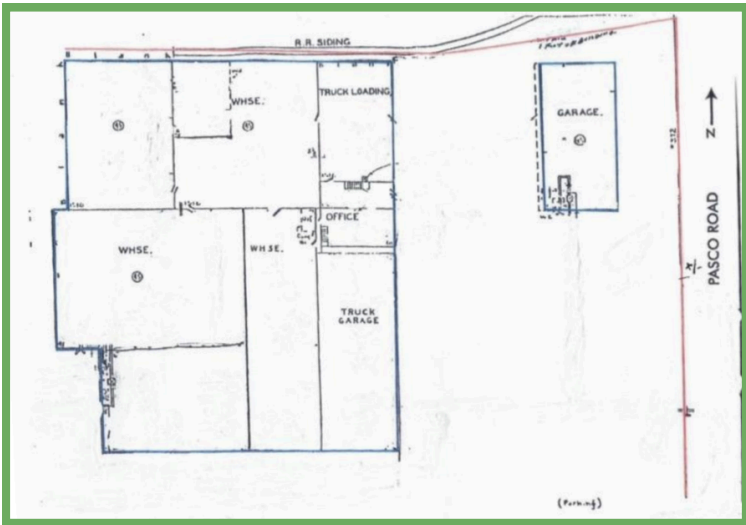
MITCH BOLOTIN

P: 413-415-1200 C: 413-537-2020
E: MITCH@REGIONCO.COM
LIC (MA): 134459
REGION CO LLC

BEN BOLOTIN

P: 413-415-1200 C: 413-530-3215
E: BEN@REGIONCO.COM
LIC (MA): 9582125
REGION CO LLC





REGION

COMMERCIAL REAL ESTATE

THE INFORMATION CONTAINED HEREIN HAS NOT BEEN VERIFIED AND IS FROM THIRD PARTY SOURCES. ALL INDIVIDUALS CONSIDERING THE SUBJECT PARTY MUST CONDUCT THEIR OWN ANALYSIS AND DETERMINE THE ACCURACY OF THE INFORMATION PROVIDED.

CONTACT

MITCH BOLOTIN

P: 413-415-1200 C: 413-537-2020
E: MITCH@REGIONCO.COM
LIC (MA): 134459
REGION CO LLC

BEN BOLOTIN

P: 413-415-1200 C: 413-530-3215
E: BEN@REGIONCO.COM
LIC (MA): 9582125
REGION CO LLC