

EXECUTIVE PARK OFFICE

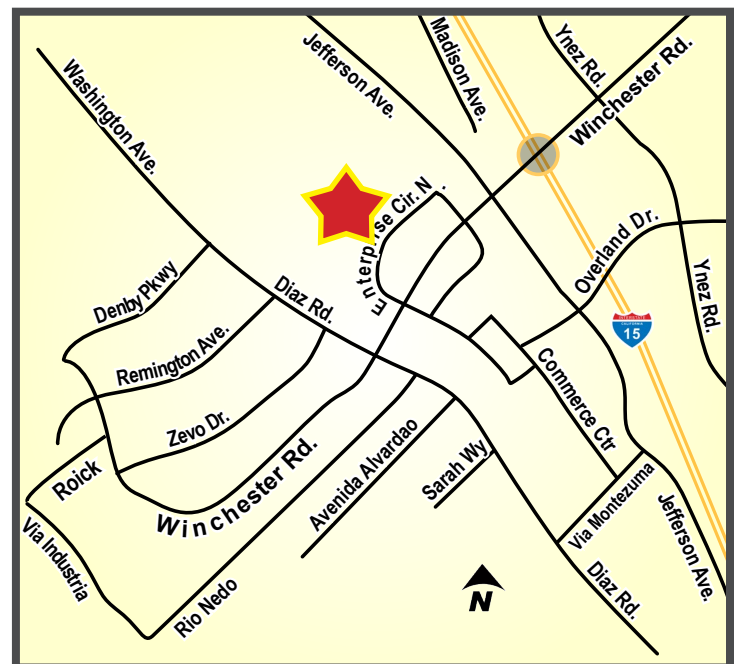
OFFICE SUITES FOR LEASE

41661 & 41689 ENTERPRISE CIRCLE NORTH - TEMECULA, CA



PROPERTY HIGHLIGHTS:

- From ±1,015 square feet
- Lease rates from: \$1,746/Month M.G.
- Excellent leasing value
- Private restrooms in most suites
- Prime location near Interstate 15 and Winchester Road
- Detailed architectural treatment
- Lush courtyard garden style landscaping
- Plentiful parking at 5:1,000 SF
- Well designed and very functional floor plans with suites ranging in size from ±1,015 to ±2,844 Sq. Ft.
- Low Modified Gross lease rates



JIM NADAL, CCIM • 951.445.4520 • jnadal@leetemecula.com • DRE #01040679

EXECUTIVE PARK OFFICE

OFFICE SUITES FOR LEASE

41661 & 41689 ENTERPRISE CIRCLE NORTH - TEMECULA, CA

AVAILABILITY

BLDG #	SUITE	SIZE	RENT	DESCRIPTION
41689	214	1,015 SF	\$1.72 PSF (\$1,746/Month)	Reception, 3 Private Offices, Open Work Area, Coffee Bar, Restroom. On Lockbox. Immediate Occupancy.
41661	210	1,514 SF	\$1.72 PSF (\$2,604/Month)	Reception, 6 Private Offices, Coffee bar, Restroom. On Lockbox. Immediate Occupancy.
41661	223	2,122 SF	\$1.64 PSF (\$3,480/Month)	2 Entrances. Reception, Conference Room, 4 Private Offices, 2 Large Open Areas, Restroom with Shower. On Lockbox. Immediate Occupancy.
41661	228	2,844 SF	\$1.74 PSF (\$4,949/Month)	Reception, 7 Private Offices, 2 Storage Rooms, Large Conference Room, Break Room, Restroom and an Open Work Area. On Lockbox. Immediate Occupancy.

See attached individual suite configurations.
 3 year minimum lease term. 5% annual increases.
 All rental rates are quoted based upon a Modified Gross Lease form.
 Rental rates are subject to change at the Owner's sole discretion.
No call centers, collection agencies, multi-level marketing firms or telephone marketing operations.

Rev. 05/29/2026

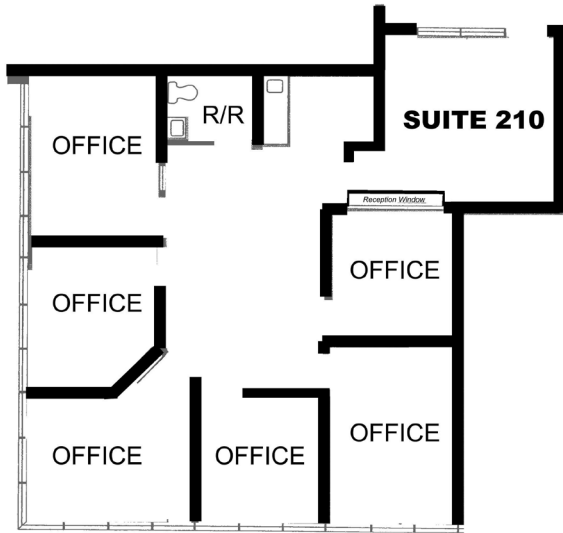


JIM NADAL, CCIM • 951.445.4520 • jnadal@leetemecula.com • DRE #01040679

41661 & 41689 ENTERPRISE CIRCLE NORTH - TEMECULA, CA

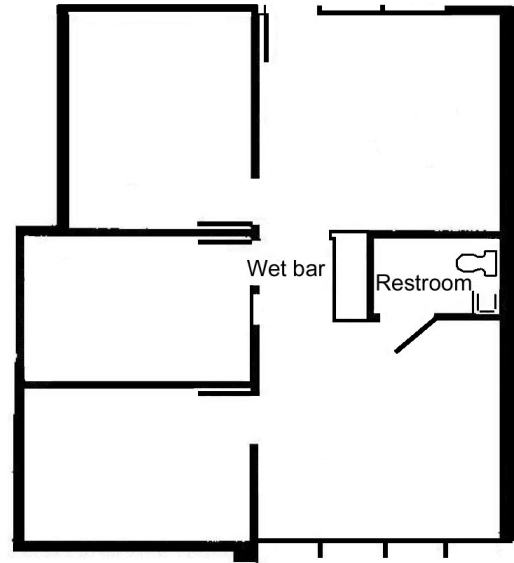
SECOND FLOOR SUITE

41661 Suite 210
±1,514 SF



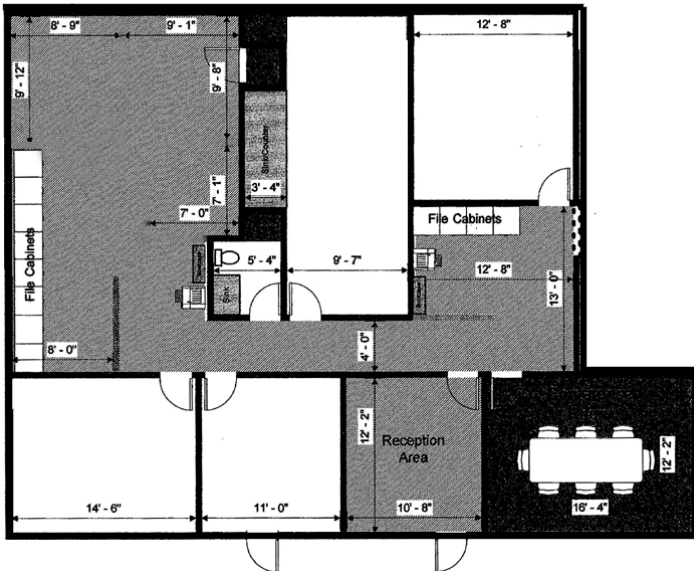
SECOND FLOOR SUITE

41689 Suite 214
±1,015 SF



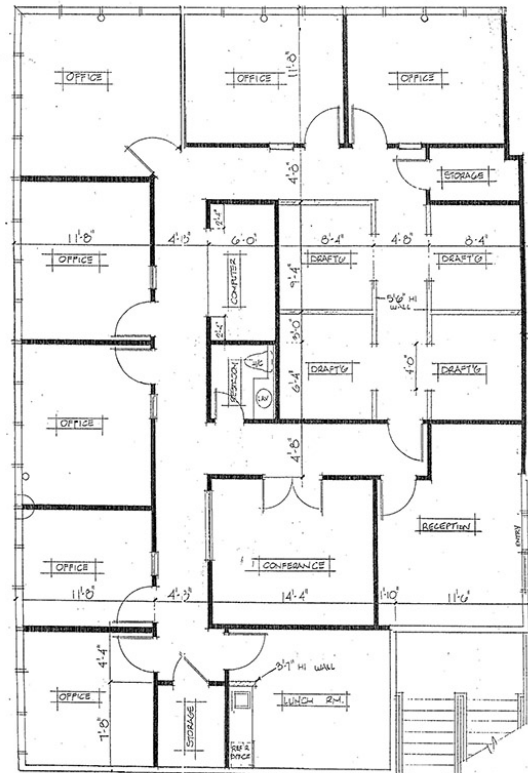
SECOND FLOOR SUITE

41661 Suite 223
±2,122 SF



SECOND FLOOR SUITE

41661 Suite 228
±2,844 SF



JIM NADAL, CCIM • 951.445.4520 • jnadal@leetemecula.com • DRE #01040679

EXECUTIVE PARK OFFICE

OFFICE SUITES FOR LEASE

41661 & 41689 ENTERPRISE CIRCLE NORTH - TEMECULA, CA



JIM NADAL, ccim • 951.445.4520 • jnadal@leetemecula.com • DRE #01040679