



Halcyon Pointe . Building I
7515 Halcyon Summit Drive
Montgomery, AL 36117

FOR LEASE

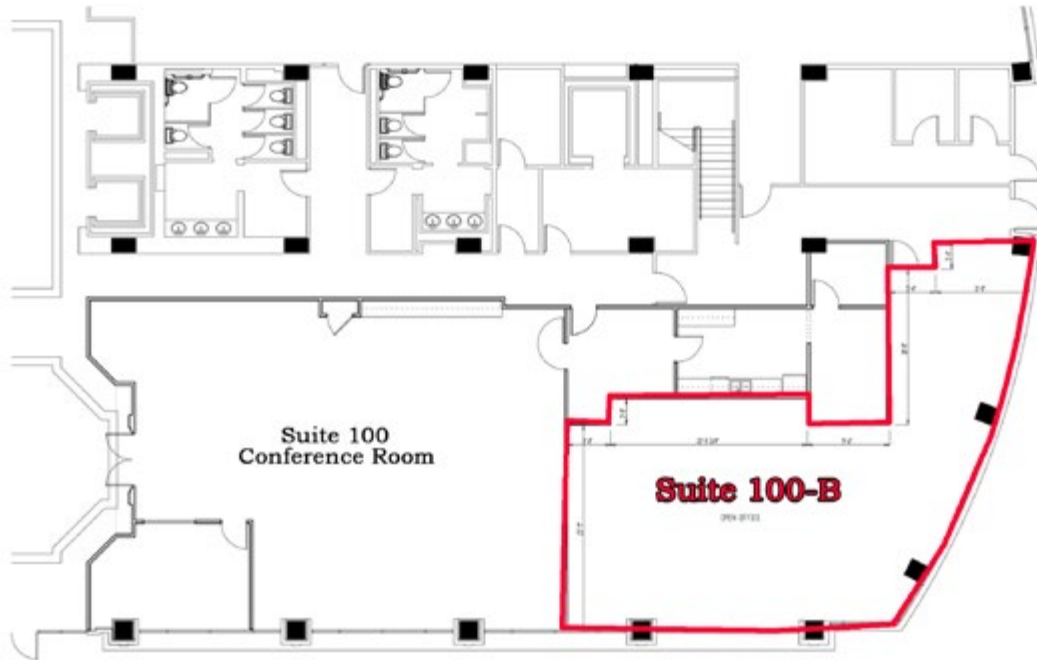
- Available Space** +/- 1,690 RSF (Suite 100-B)
+/- 1,265 RSF (Suite 107)
- Lease Rate** \$22/RSF (Full Service Rate)
- Lease Term** Five (5) Year Minimum
- Tenant Improvements** Negotiable
- Possession** Immediate
- Parking** On-Site

Halcyon Pointe I, a Class "A" office building, is developed on a wooded 15.5 acre site, with convenient access to Taylor Road & I-85 (Exit 9), in Montgomery. Current tenants include Home Builders Association of Alabama, Morgan Stanley Smith Barney, Alabama Tax Tribunal, Progressive Insurance, Johnson & Johnson Insurance, Cadence Insurance, Pinon Law Firm and Volkert, Inc. Contact John Stanley, CCIM, for more information at (334) 271-2475. SHOWN BY APPOINTMENT ONLY.



John C. Stanley, CCIM
John Stanley & Associates, Inc.
4747 Woodmere Blvd. ■ Montgomery, AL 36106
Tel: (334) 271-2475 ■ Fax: (334) 271-2421
jstanley@johnstanleyassociates.com
www.johnstanleyassociates.com

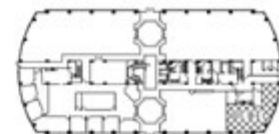




SUITE 100-B LEASE PLAN

SCALE: 3/16" = 1'-0"

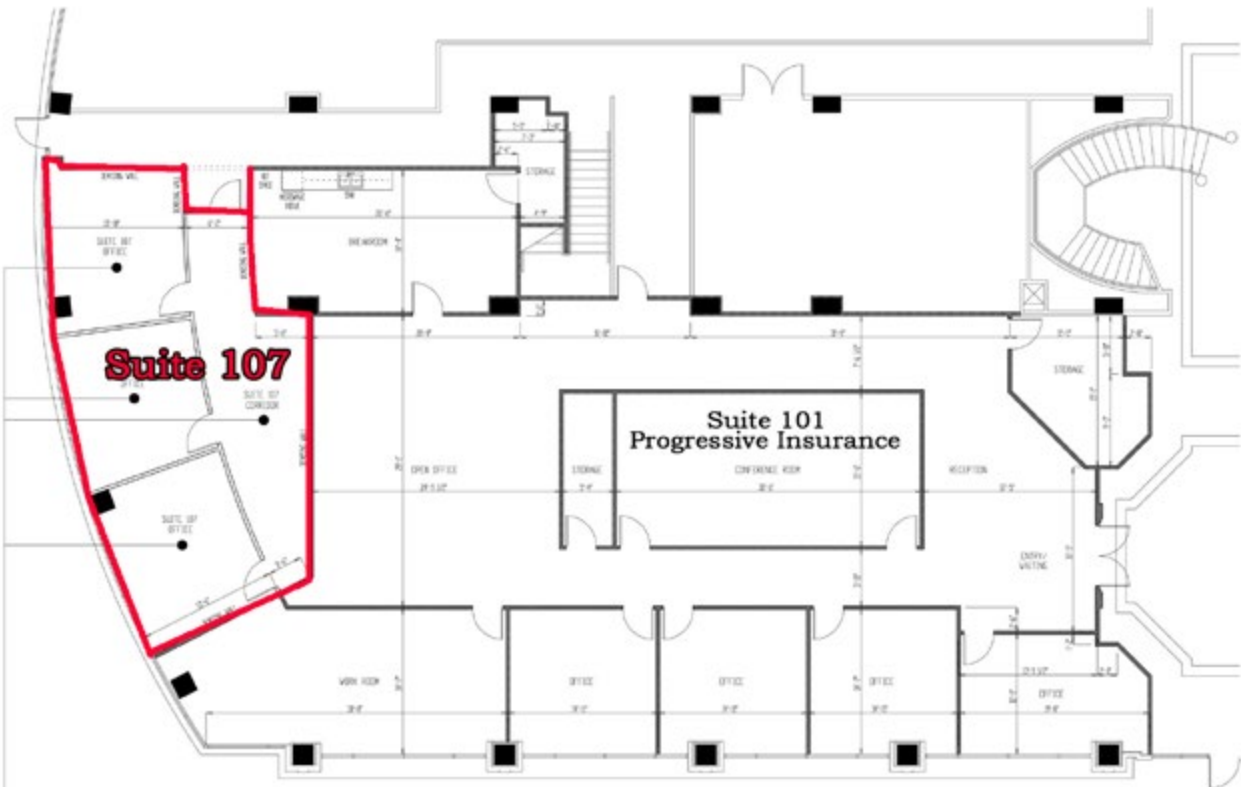
USABLE SQUARE FOOTAGE: 1,445 SF
 RENTABLE SQUARE FOOTAGE: 1,690 SF



HALCYON POINTE I
SUITE 100-B LEASE PLAN
 7515 HALCYON SUMMIT DRIVE
 MONTGOMERY, ALABAMA 36117

| | |
|---|--------------|
| SHEET TITLE | |
| SUITE 100-B LEASE PLAN | |
| PROJECT NUMBER | HALC |
| FILE NUMBER | 1053 |
| DATE | JAN 27, 2009 |
| REVISION | |
| DRAWING NOT INTENDED TO BE A PROFESSIONAL SEAL OR USED AS A BASIS FOR CONSTRUCTION ONLY | |

SHEET NUMBER
ALOR

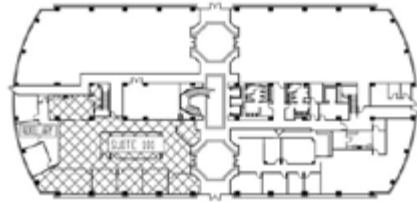


SUITE 107 LEASE PLAN

SCALE: 3/16" = 1'-0"
 USABLE SQUARE FOOTAGE: 1,096 SF
 RENTABLE SQUARE FOOTAGE: 1,265 SF

SUITE 101 LEASE PLAN

SCALE: 3/16" = 1'-0"
 USABLE SQUARE FOOTAGE: 4,162 SF
 RENTABLE SQUARE FOOTAGE: 4,801 SF



KEY PLAN