

9050 W. Overland Road, Ste. 235, Boise, ID

Blackeagle Plaza Building, in Blackeagle Center



SPACE DETAILS

- SPACE:** 1,839 SF (2nd floor)
- ACCESS:** Access through the main building lobby on south side
- LAYOUT:** Northeast corner office space with exterior glass and views of foothills. Reception, 3 private offices and open area.
- AVAILABLE:** Contact for details

PROPERTY FEATURES

- BLDG TYPE:** Office
- BLDG SIZE:** 32,308 Square Feet (condominium)
- FLOORS:** Two Story
- PARKING:** 5/1,000 SF Leased, included
- LEASE TYPE:** Full Service, Less Tenant Janitorial
- ZONING:** City of Boise, C-4D/DA
- OWNER:** Sundance Investments, L.L.L.P.

Call: 208-322-7300

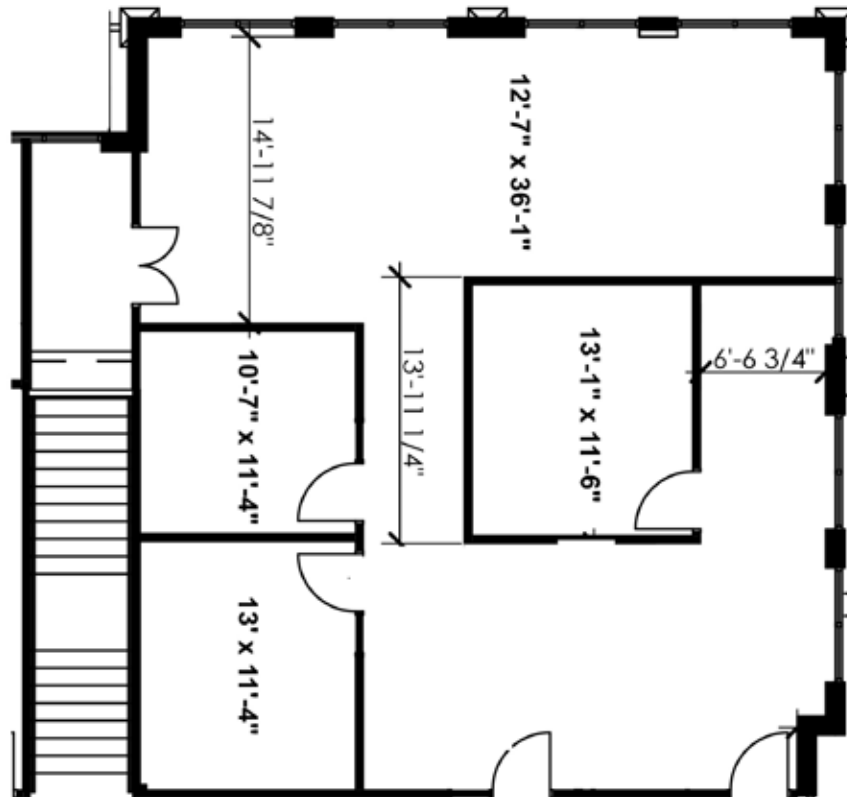
WWW.SUNDANCECO.COM



9050 W. Overland Road, Ste. 235, Boise, ID

Blackeagle Plaza Building, in Blackeagle Center

Floor Plan 1,839 SF (2nd floor)



Call: 208-322-7300

WWW.SUNDANCECO.COM



9050 W. Overland Road, Ste. 235, Boise, ID

Blackeagle Plaza Building, in Blackeagle Center



HIGHLIGHTS

- Office and Quasi Retail building
- Prime location on the NW corner of Overland and Maple Grove Roads
- Overland Road exposure and access
- Professional Blackeagle Center, 45 acres park provides abundant service and food amenities in close proximity
- Generous parking included
- Public bus stop adjacent to business park
- Close freeway access at both Overland (exit 50A/B) and Franklin Road (exit 49)

Call: 208-322-7300

WWW.SUNDANCECO.COM



9050 W. Overland Road, Ste. 235, Boise, ID

Blackeagle Plaza Building, in Blackeagle Center



Call: 208-322-7300

WWW.SUNDANCECO.COM

