

299

PARK AVENUE



Capital One

**INCREDIBLE CORNER RETAIL OPPORTUNITY
ON PARK AVENUE
IN THE HEART OF MIDTOWN AT GRAND CENTRAL**



**CUSHMAN &
WAKEFIELD**

299 PARK AVENUE

East block of Park Avenue
between East 48th Street and East 49th Street

Availabilities

Ground Level:	2,860 SF	Ceiling Height	13'1" - 26'
Mezzanine:	1,228 SF		13'1"
Total:	4,088 SF		

Possession:	Immediate
Lease Type:	Sublease - Long Term
Asking Rent:	Upon Request

COMMENTS:

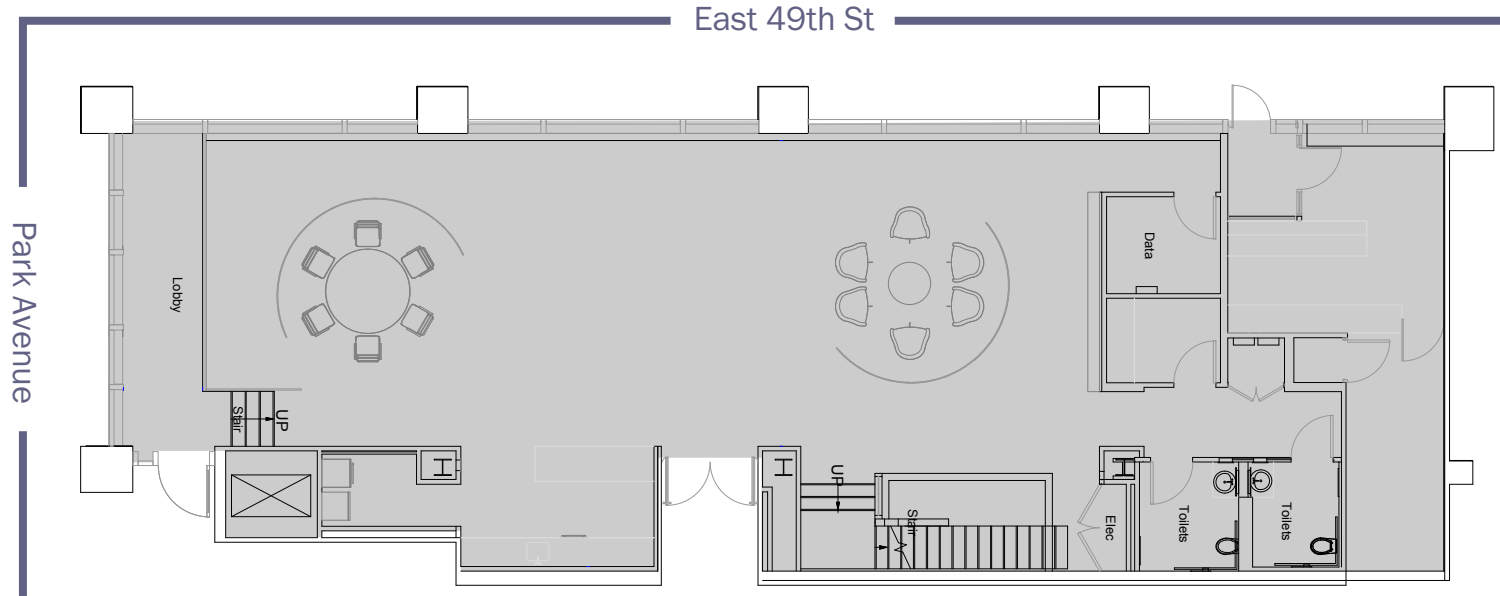
- Built reception/meeting space to be delivered as-is with electric and HVAC in place
- North side retail



FLOORPLANS

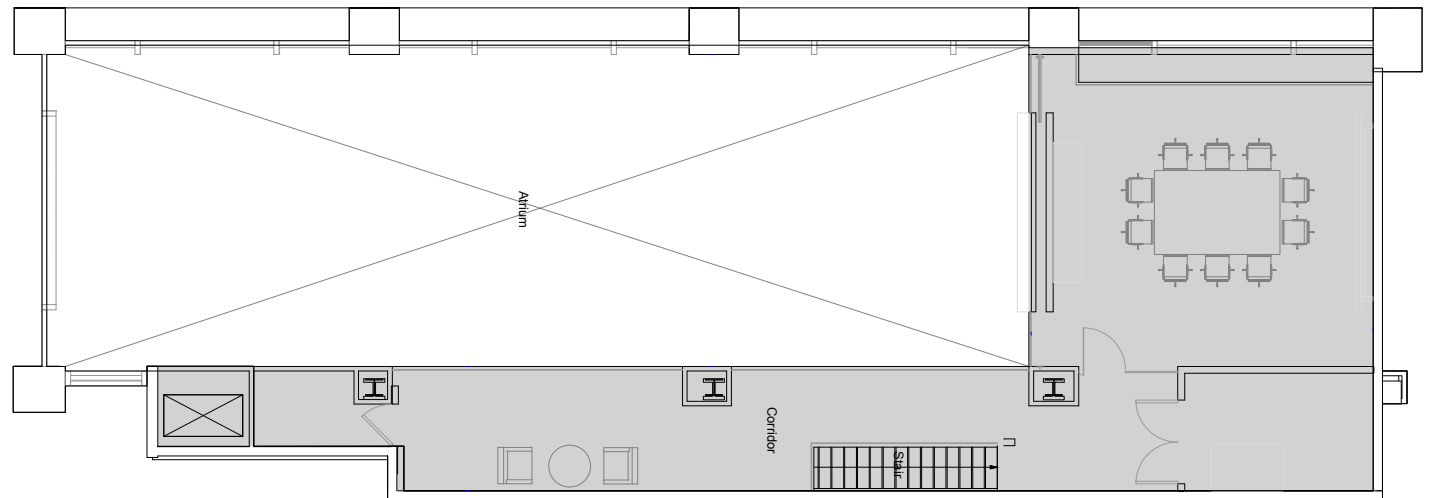
Ground Level:
2,860 SF

Ceiling Height: 13'1" - 26'



Mezzanine:
1,228 SF

Ceiling Height: 13'1"



LOCATION

STEPS AWAY FROM ONE OF THE MOST ICONIC & RECOGNIZABLE TRANSPORTATION DESTINATIONS.

750,000 DAILY VISITORS

Retail

- 1 Saks Fifth Avenue
- 2 Paul Stuart
- 3 Coach
- 4 H&M
- 5 NBA Store
- 6 Barnes & Noble
- 7 Urban Outfitters
- 8 Alden Shoes
- 9 Charles Tyrwhitt
- 10 Zara
- 11 & Other Stories
- 12 Adidas
- 13 Aritzia
- 14 Tend

Restaurants

- 1 Bobby Van's Steakhouse
- 2 Lea Wine Bar
- 3 Urban Space
- 4 Sweetgreen
- 5 Pavillion
- 6 Morton's
- 7 Avra
- 8 Lobster Club
- 9 Monkey Bar

Hotel


- 1 Waldorf Astoria
- 2 The Library Hotel
- 3 Intercontinental

Points of Interest

- 1 Bryant Park
- 2 New York Public Library
- 3 The Yale Club
- 4 NY Racket Club

Access to

 Metro-North Railroad

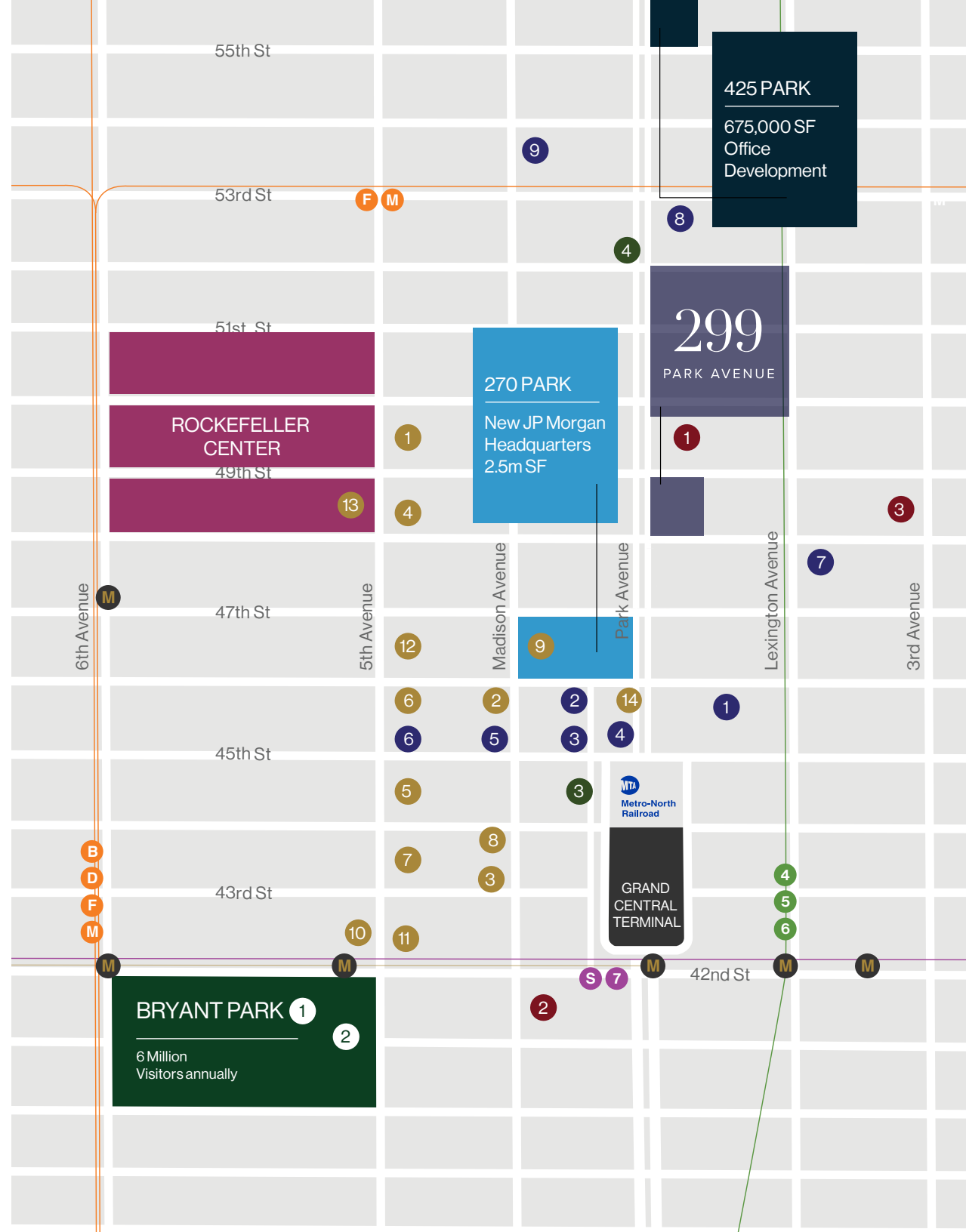
· **31** commuter and **15** city bus routes 

· **2 Million** taxis a year

· Buses to and from **3 Airports**

· 7 Subway lines





299

PARK AVENUE



KENJI OTA

212 841 5909
kenji.ota@cushwake.com

KATHRYN CRUZ

212 660 7766
kathryn.cruz@cushwake.com

DALE SCHLATHER

212 841 5970
dale.schlather@cushwake.com

GREG HERMAN

212 841 7828
greg.herman@cushwake.com



**CUSHMAN &
WAKEFIELD**