

# MEDICAL OFFICE FOR LEASE









JONES LANG LASALLE BROKERAGE, INC., CA REAL ESTATE LICENSE #01856260.






## Building Overview

Mercy Medical is San Diego's premier medical office building in Hillcrest's healthcare corridor. This landmark 86,288 SF building features a comprehensive \$8 million renovation, offering modern medical spaces with prime connectivity to regional hospitals and walkable urban amenities.

### The Highlights

-  86,288 SF seven-story medical office building adjacent to Scripps Mercy Hospital
-  Direct accessibility to three primary freeways: I-5, I-8, and SR-163
-  Recent \$8 million renovation, including enhanced vehicle flow in on-site parking garage
-  Comprehensive on-site ancillary services: full-service pharmacy, LabCorp, and Quest Labs
-  Premium suites featuring views of downtown, San Diego Bay, and mountain vistas
-  Private tenant patio

### The Comforts

-  Long-term, stable ownership
-  Professional on-site property management
-  Amenity-rich neighborhood featuring 200+ restaurants



## Availabilities

- **Suite 220:**  
2,350 RSF - Built-out doctor's office

---

- **Suite 303:**  
1,782 RSF - Built-out dental office

---

- **Suite 408:**  
1,324 RSF - Built-out medical suite

---

- **Suite 415:**  
3,923 RSF - Built-out doctor's office

---

- **Suite 440:**  
1,507 RSF - Built-out doctor's office

---

- **Suites 445:** Just leased!

---

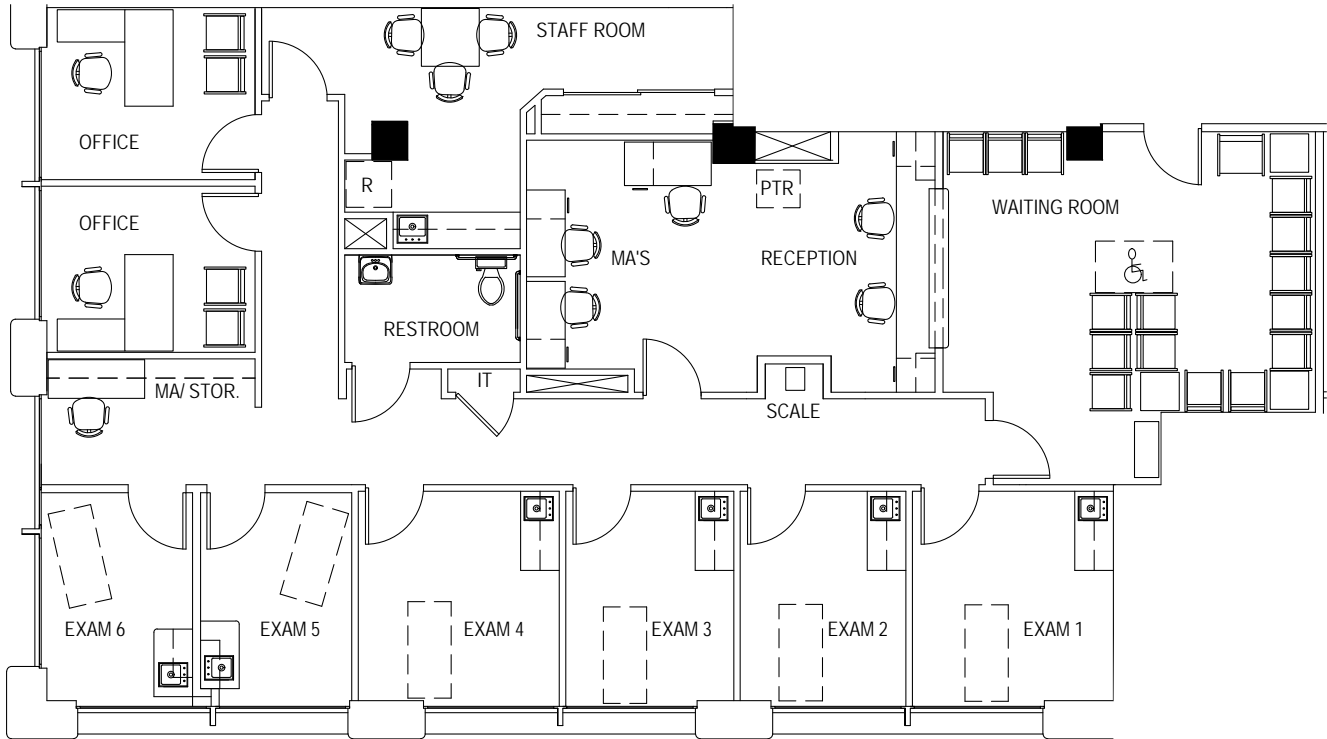
- **Suites 620:** Just leased!

---

# Suite 220

2,350 RSF

Built-out doctor's office



**KELLY MORIARTY**

858.410.6359  
kelly.moriarty@jll.com  
RE License #01963162

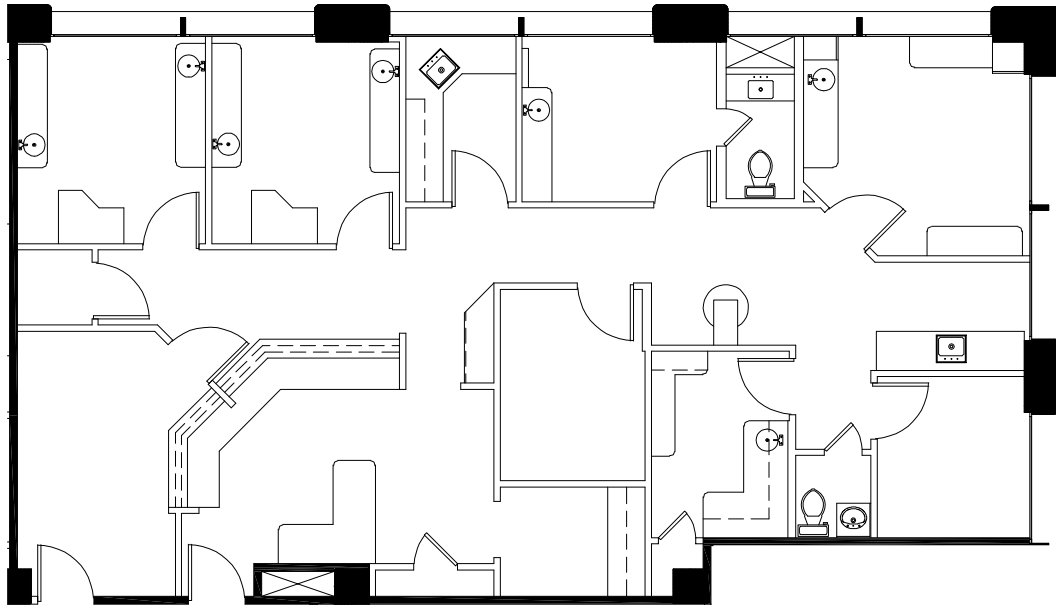
**JESS GIANULIAS**

858.352.2906  
jess.gianulias@jll.com  
RE License # 02091715

# Suite 303

1,782 RSF

Built-out dental office



**KELLY MORIARTY**

858.410.6359  
kelly.moriarty@jll.com  
RE License #01963162

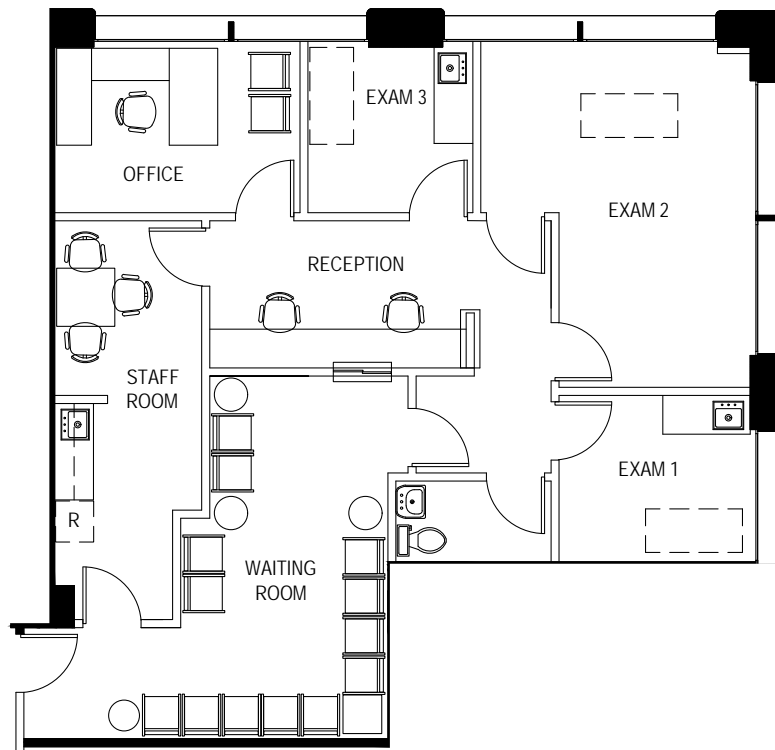
**JESS GIANULIAS**

858.352.2906  
jess.gianulias@jll.com  
RE License # 02091715

# Suite 408

1,324 RSF

Built-out medical suite (contact us for details)



**KELLY MORIARTY**

858.410.6359  
kelly.moriarty@jll.com  
RE License #01963162

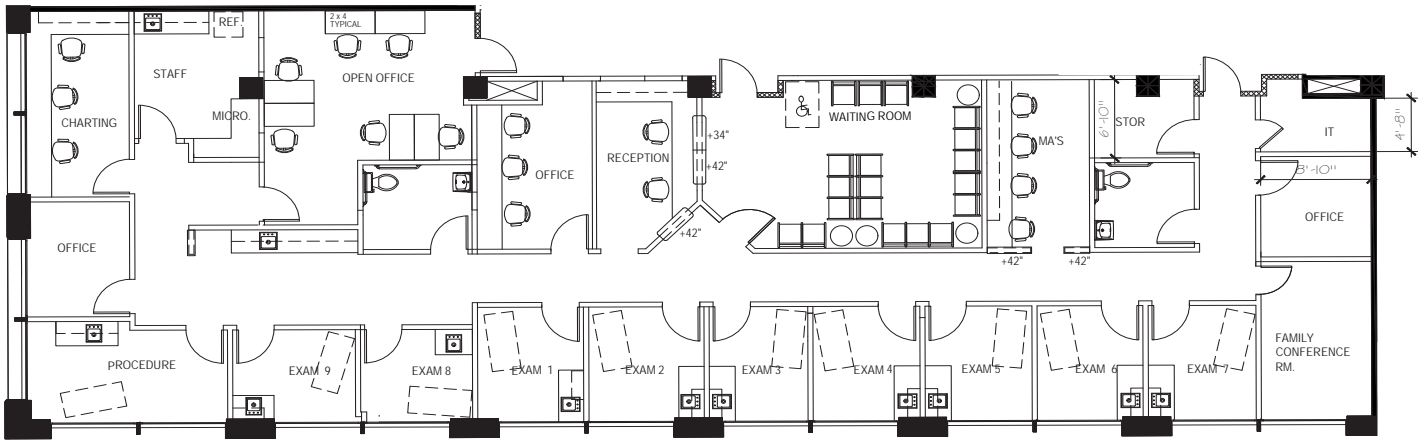
**JESS GIANULIAS**

858.352.2906  
jess.gianulias@jll.com  
RE License # 02091715

# Suite 415

3,923 RSF

Built-out doctor's office



**KELLY MORIARTY**

858.410.6359  
kelly.moriarty@jll.com  
RE License #01963162

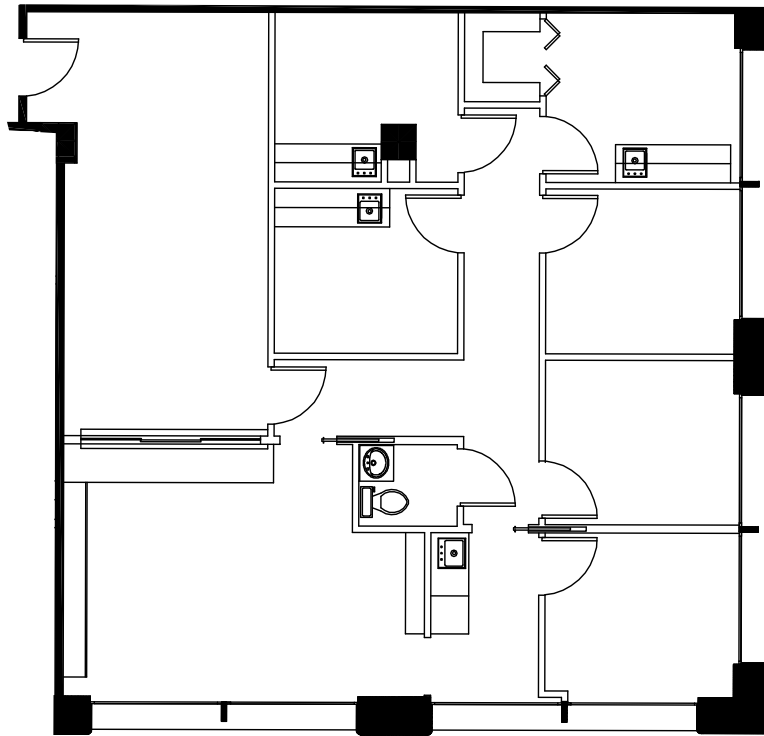
**JESS GIANULIAS**

858.352.2906  
jess.gianulias@jll.com  
RE License # 02091715

# Suite 440

1,507 RSF

Built-out doctor's office



**KELLY MORIARTY**

858.410.6359  
kelly.moriarty@jll.com  
RE License #01963162

**JESS GIANULIAS**

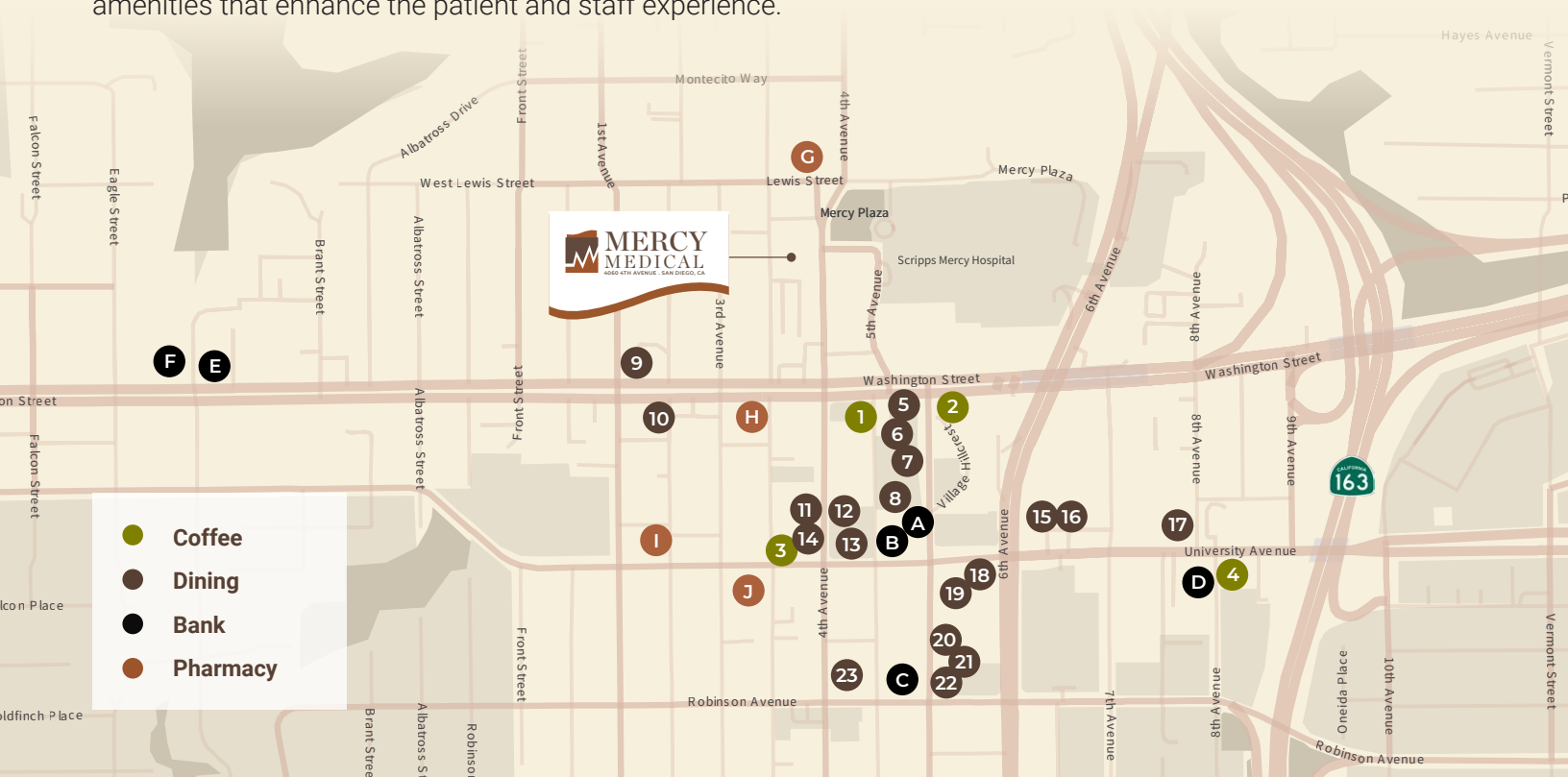
858.352.2906  
jess.gianulias@jll.com  
RE License # 02091715





# Our Neighbors

Located in a walker's paradise, Mercy Medical is surrounded by vibrant and diverse local amenities that enhance the patient and staff experience.



- |                                |                                    |                                     |
|--------------------------------|------------------------------------|-------------------------------------|
| 1. Dunkin'                     | 13. The Asian Bistro               | A. U.S. Bank Branch                 |
| 2. Kona Coffee Co.             | 14. Bread & Cie                    | B. 3900 Fifth Ave #100              |
| 3. Peet's Coffee               | 15. Oscars Mexican Seafood         | C. Chase Bank                       |
| 4. Better BuzzCoffee Hillcrest | 16. Five Guys                      | D. Bank of America Financial Center |
| 5. Los Panchos Tacos & Cantina | 17. Chipotle Mexican Grill         | E. Wells Fargo Bank                 |
| 6. Makai Sushi                 | 18. Taste of Thai - Hillcrest      | F. U.S. Bank Branch                 |
| 7. India Palace                | 19. Dumplings N More               | G. Vons Pharmacy                    |
| 8. Snooze, an A.M. Eatery      | 20. La Vecindad Neighborhood TACOS | H. CVS                              |
| 9. Panda Express               | 21. Phở Fifth Avenue               | I. AHF Hillcrest Pharmacy           |
| 10. Bronx Pizza                | 22. HiroNori Craft Ramen           | J. Walgreens Pharmacy               |
| 11. Luna Grill Hillcrest       | 23. Einstein Bros. Bagels          |                                     |
| 12. Starry Lane Bakery         |                                    |                                     |

# Where Location Sets Us Apart

Nestled in the heart of Hillcrest, this property maintains strategic proximity to major healthcare providers, including Scripps Mercy Hospital and the new UCSD Medical Center.



**UC San Diego Division of  
Hospital Medicine**

**UC San Diego Health Emergency  
Department (ER) - Hillcrest**

**Hillcrest Medical Center at UC  
San Diego Health**



**Scripps Mercy Hospital  
San Diego**

**Scripps Mercy San Diego  
Emergency Room**



**Prebys Cancer  
Center**



**Select Specialty  
Hospital - San Diego**



# Where Community Matters

Demographics within a 5-mile radius



Total Population  
**520K**



Total Households  
**226,140**



Median Age  
**36.5**



Median Household Income  
**\$94K**



Population Age 65+  
**35K**



Total Employees (SIC)  
**396,823**



Population Age <24  
**136K**



Average Health Care Spending  
**\$7,300**



Total Daytime Population  
**642K**

Patient Volume				
Physician Specialty	2024 Volume	2029 Volume	5-Year Growth	Doc Count
Endocrinology	3,825	4,887	27.8%	56
Psychiatry	252,564	297,755	17.9%	2,250
Physical Therapy/Rehabilitation	464,314	543,497	17.1%	1,051
Cardiovascular	185,775	211,980	14.1%	192
Oncology	23,805	26,583	11.7%	110
Rheumatology	344,955	385,180	11.7%	42
ENT	53,509	59,652	11.5%	95
Orthopedics	74,940	83,391	11.3%	267
Other Specialties	232,503	257,346	10.7%	2,141
Lab	758,792	834,629	10.0%	105
Nephrology	8,624	9,477	9.9%	77
Neurology	28,551	30,832	8.0%	180
Evaluation and Management	1,845,381	1,978,906	7.2%	3,927
Radiology	495,599	526,307	6.2%	268
Gastroenterology	39,050	41,212	5.5%	124
General Surgery	10,064	10,542	4.7%	248
Urology	16,177	16,744	3.5%	92
Pulmonology	22,683	21,933	-3.3%	103
Obstetrics & Gynecology	27,213	25,215	-7.3%	201



**MERCY  
MEDICAL**  
4060 4TH AVENUE . SAN DIEGO, CA



**KELLY MORIARTY**  
858.410.6359  
kelly.moriarty@jll.com  
RE License #01963162

**JESS GIANULIAS**  
858.352.2906  
jess.gianulias@jll.com  
RE License # 02091715

Although information has been obtained from sources deemed reliable, neither Owner nor JLL makes any guarantees, warranties or representations, express or implied, as to the completeness or accuracy as to the information contained herein. Any projections, opinions, assumptions or estimates used are for example only. There may be differences between projected and actual results, and those differences may be material. The Property may be withdrawn without notice. Neither Owner nor JLL accepts any liability for any loss or damage suffered by any party resulting from reliance on this information. If the recipient of this information has signed a confidentiality agreement regarding this matter, this information is subject to the terms of that agreement. ©2025 Jones Lang LaSalle IP, Inc. All rights reserved.