



NOW AVAILABLE

OFFICE SPACE FOR LEASE

Key Features

- South Meridian Ave frontage with I-40 visibility
- Signage opportunity
- Close proximity to I-40 & I-44
- Located near numerous retail, restaurants, hotels and just minutes from Will Rogers World Airport
- On-site Parking

Property Highlights

Building Size:	± 65,520 SF
Available SF:	± 251 - 44,318 SF
Stories:	7
Lot Size:	± 2.40 AC
Parking Ratio:	2.93/1000
	192 Surface Parks



Lease Rate
\$16.00 FSG



OFFICE SPACE FOR LEASE

MERIDIAN TOWER
909 S Meridian Ave
Oklahoma City, OK 73108



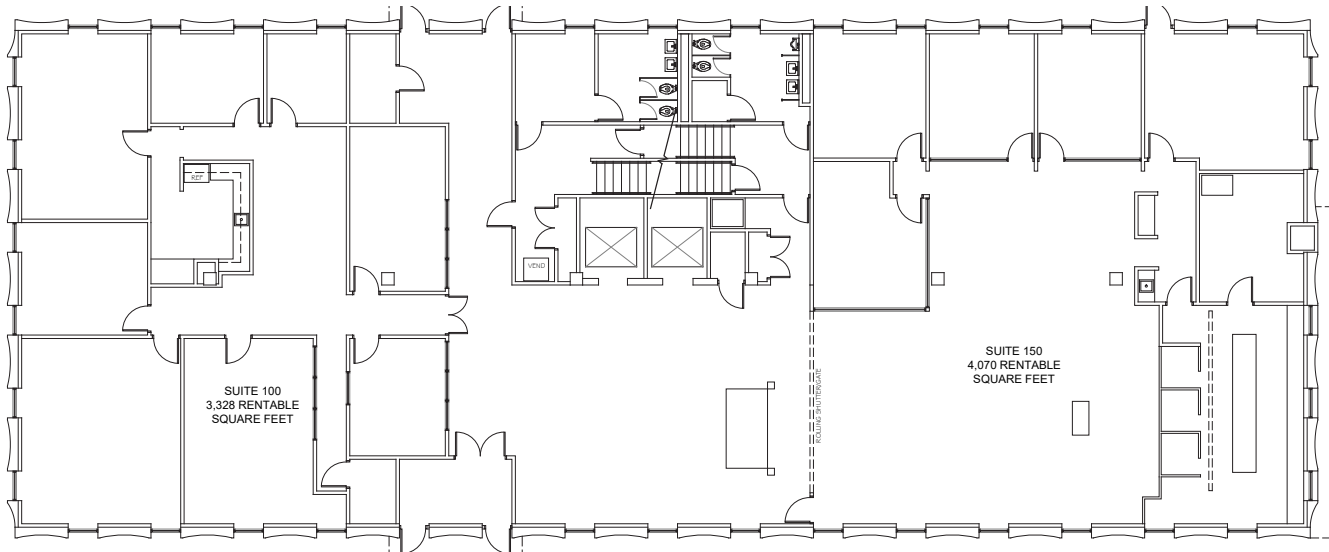
AVAILABLE SPACE

FLOOR #	SUITE #	AVAILABLE SF	FLOOR CONTINGENCY	LEASE RATE
1st Floor	Suite 100	± 3,328 SF	± 3,328 SF	\$16.00 FSG
2nd Floor	Suite 200	± 4,965 SF	± 4,965 SF	\$16.00 FSG
3rd Floor	Suite 300	± 3,000 SF	± 9,035 SF	\$16.00 FSG
3rd Floor	Suite 305	± 1,175 SF	± 9,035 SF	\$16.00 FSG
3rd Floor	Suite 310	± 1,436 SF	± 9,035 SF	\$16.00 FSG
3rd Floor	Suite 350	± 2,381 SF	± 9,035 SF	\$16.00 FSG
3rd Floor	Suite 375	± 859 SF	± 9,035 SF	\$16.00 FSG
4th Floor	Suite 405	± 561 SF	± 4,977 SF	\$16.00 FSG
4th Floor	Suite 406	± 1,136 SF	± 4,977 SF	\$16.00 FSG
4th Floor	Suite 410	± 2,026 SF	± 4,977 SF	\$16.00 FSG
4th Floor	Suite 412	± 1,254 SF	± 4,977 SF	\$16.00 FSG
5th Floor	Suite 500	± 568 SF	± 4,607 SF	\$16.00 FSG
5th Floor	Suite 540	± 809 SF	± 4,607 SF	\$16.00 FSG
5th Floor	Suite 545	± 251 SF	± 4,607 SF	\$16.00 FSG
5th Floor	Suite 560	± 2,003 SF	± 4,607 SF	\$16.00 FSG
5th Floor	Suite 575	± 976 SF	± 4,607 SF	\$16.00 FSG
6th Floor	Suite 600	± 3,643 SF	± 9,035 SF	\$16.00 FSG
6th Floor	Suite 608	± 1,372 SF	± 9,035 SF	\$16.00 FSG
6th Floor	Suite 610	± 3,581 SF	± 9,035 SF	\$16.00 FSG
7th Floor	Suite 700	± 3,378 SF	± 9,035 SF	\$16.00 FSG
7th Floor	Suite 750	± 5,616 SF	± 9,035 SF	\$16.00 FSG

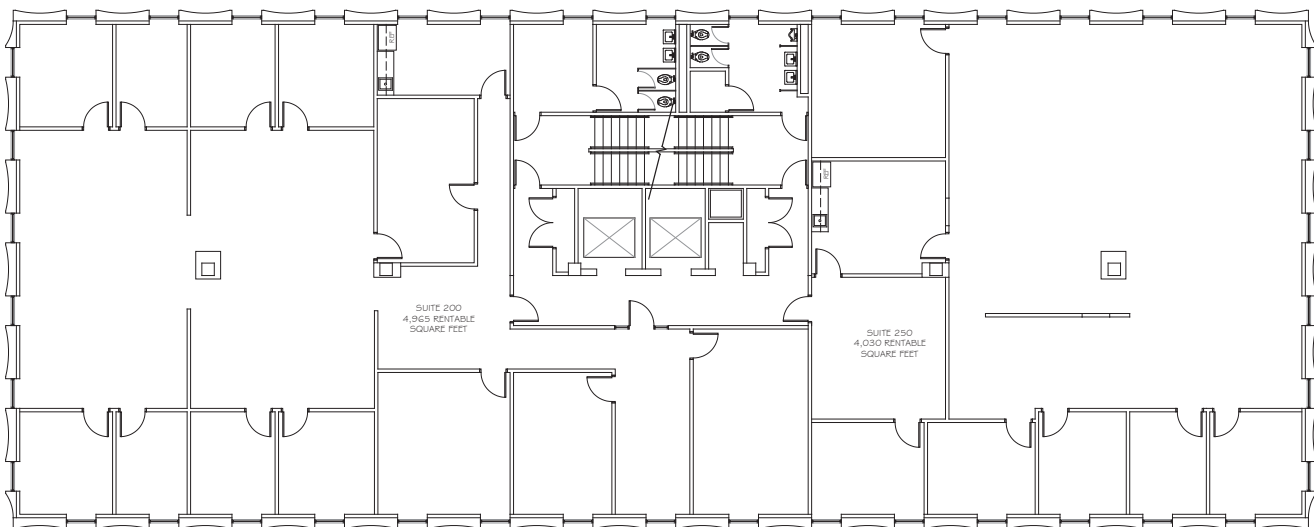


FLOOR PLANS

First
Floor

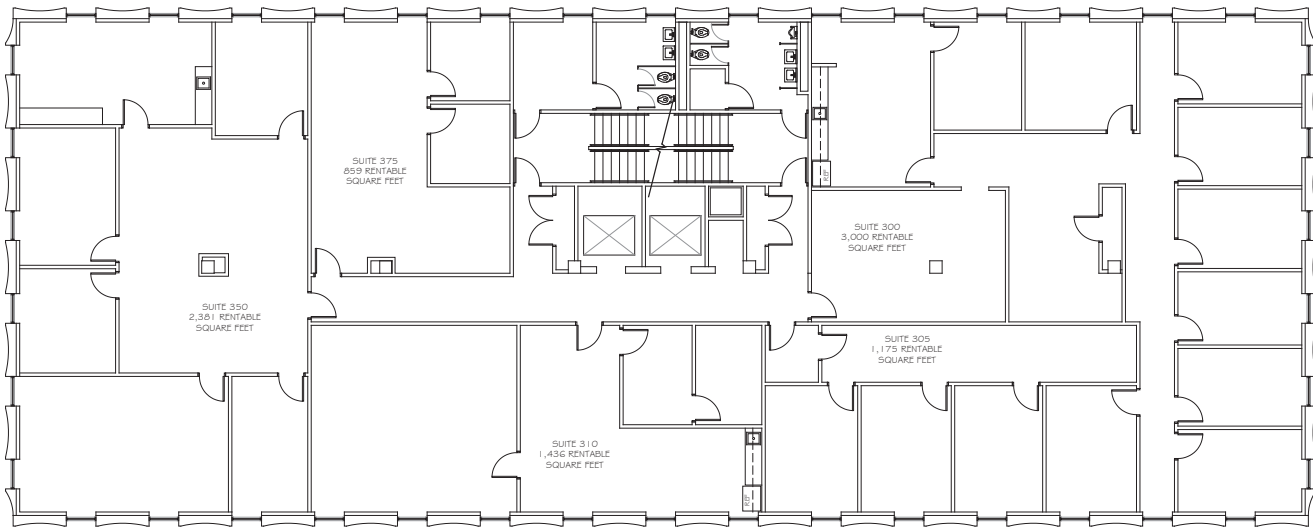


Second
Floor

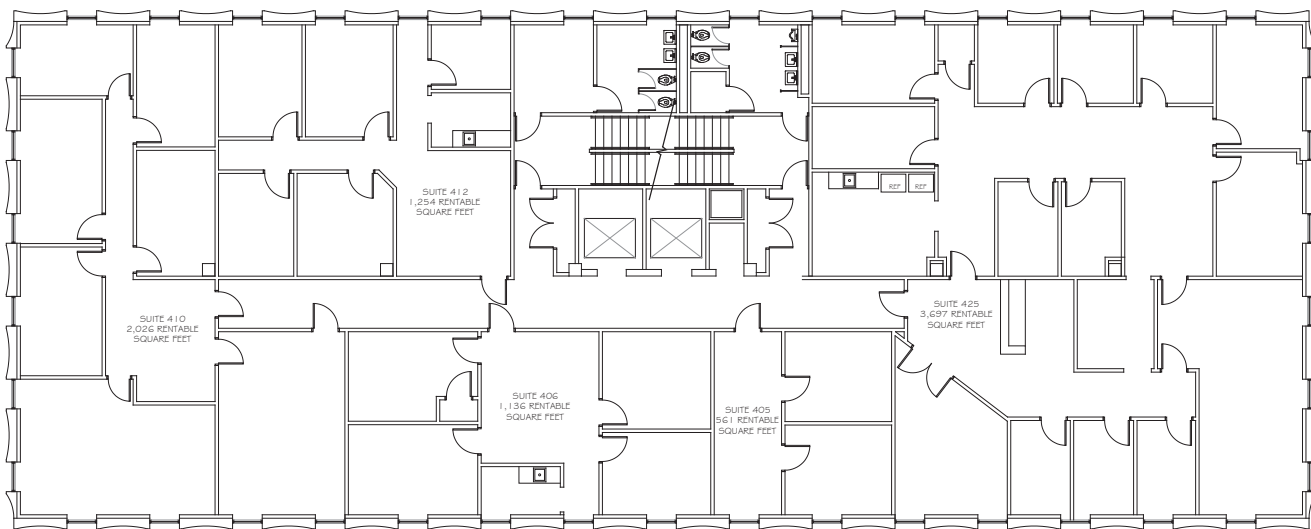


FLOOR PLANS

Third
Floor

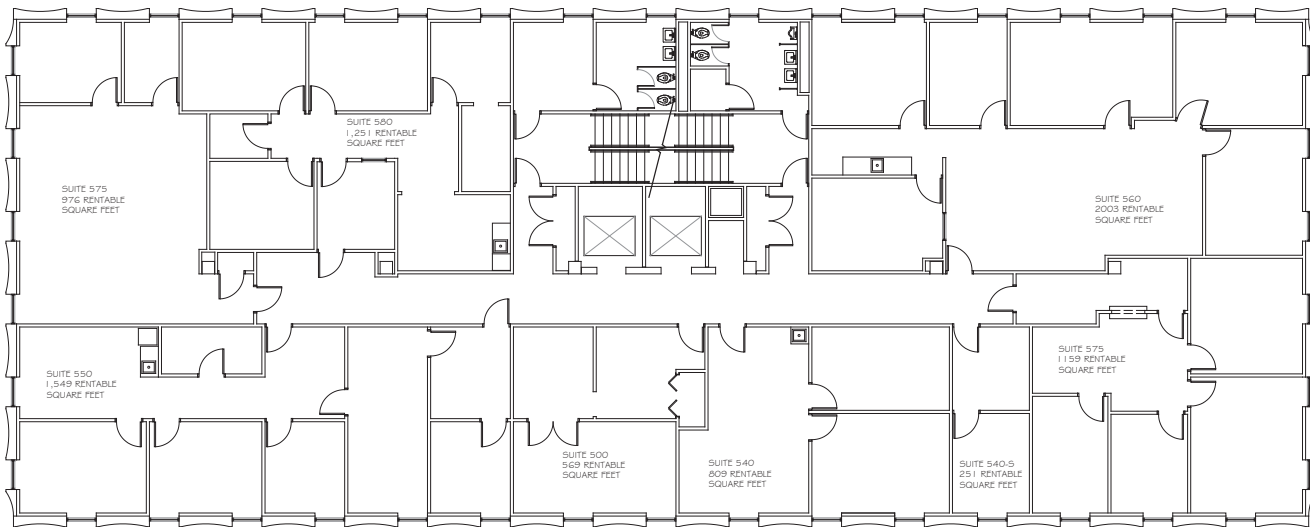


Fourth
Floor

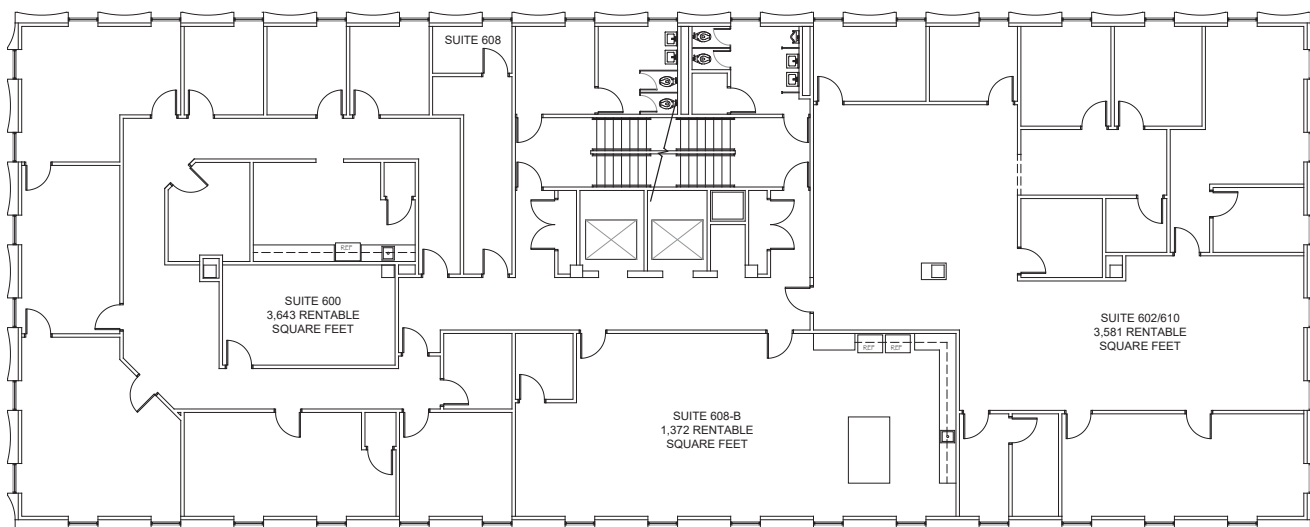


FLOOR PLANS

Fifth
Floor

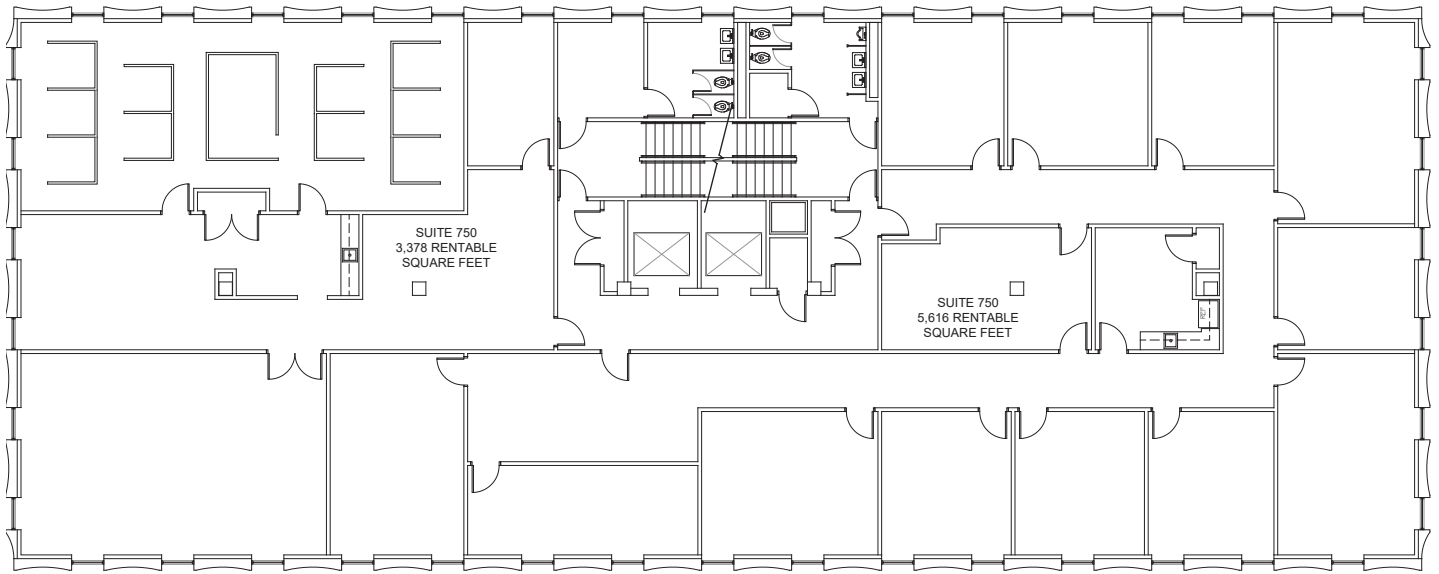


Sixth
Floor



FLOOR PLANS

Seventh
Floor



CONTACT US

MICAH SHERMAN, CCIM
+1 405 488 5548
msherman@commercialoklahoma.com

TRAVIS MASON
+1 405 249 0655
tmason@commercialoklahoma.com

VIVIENNE VOGLER
+1 405 570 8595
vvogler@commercialoklahoma.com