

758 KAPAHULU AVENUE

Honolulu, Hawaii 96816

FOR LEASE

Storefront Restaurant/cafe space



PROPERTY DESCRIPTION

Elevate your culinary journey in Kapahulu with our renovated restaurant space, boasting a commercial kitchen ready to craft delectable dishes that delight the senses.

Located on the corner of Kapahulu and Palani Avenue, a restaurant/cafe space is available for lease. There is an above ground grease trap and restrooms in the unit. Please contact us if you have questions and do not disturb the neighboring tenants.

PROPERTY SNAPSHOT

Location:	Kapahulu
Property Type:	Storefront Restaurant/Cafe and Retail
TMK:	A portion of (1) 2-7-34-8
Space Available:	Size:
Space 758	1,510 SF
Rent:	\$6.50 / SF / Month NNN
CAM:	\$0.98 / SF / Month
Zoning:	B-2

©2024 Sofos Realty Corporation. All information contained herein is obtained from sources deemed reliable. However, no representations or guarantees are made as to the accuracy thereof, and it is provided herein subject to errors, omissions, changes and withdrawals without notice. Offeror and/or his agent should confirm this information prior to making any offer. Buyer agrees that all negotiation shall be conducted through Sofos Realty Corporation only. No subagency is offered or intended.

 **SOFOS REALTY**
CORPORATION
Commercial Brokerage • Property Management

FLOOR PLAN FOR 758 KAPAHULU

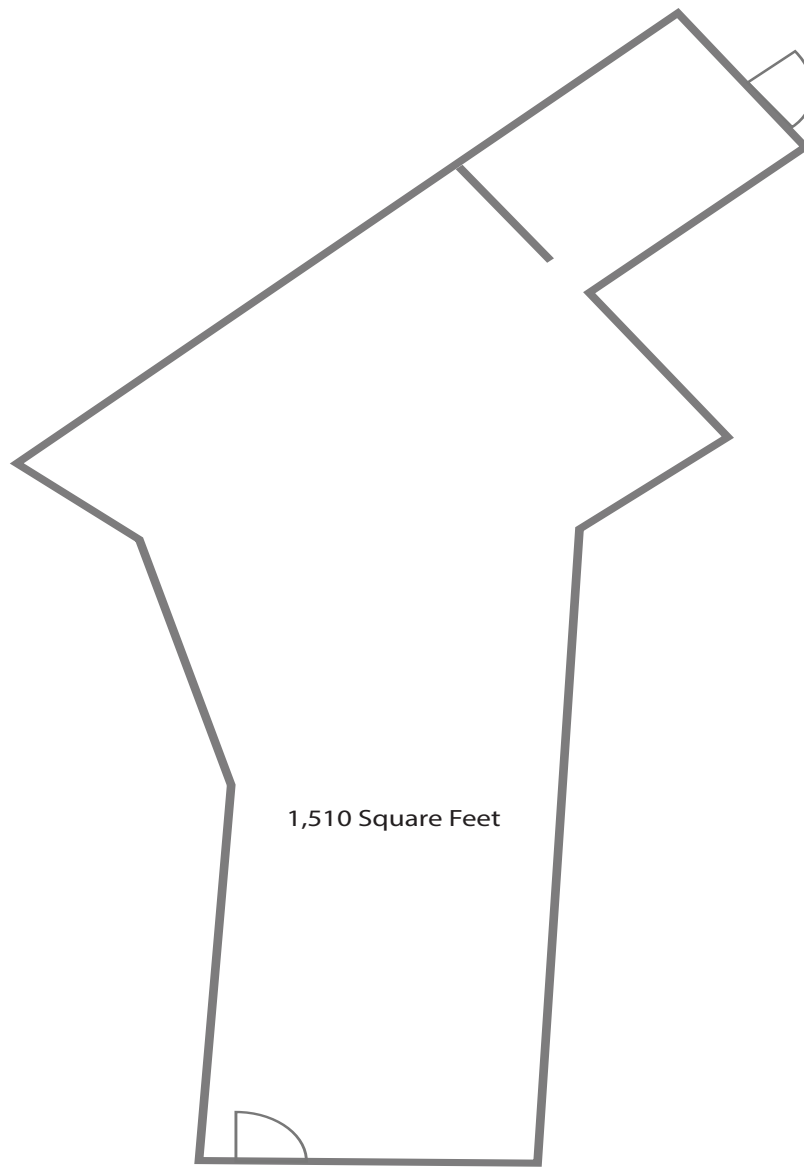
AVAILABILITY

Unit

Size

758

1,510 SF



1,510 Square Feet

Kapahulu Avenue

Site Plans are for marketing purposes only and may not accurately reflect the property.