

PALM VALLEY BUSINESS PARK

LITCHFIELD ROAD & VAN BUREN STREET



13765 WEST AUTO DRIVE
GOODYEAR, ARIZONA 85338

FOR LEASE

7,484 SQUARE FEET AVAILABLE

\$1.35 SF + NNN

DOCK & GRADE LEVEL LOADING

3 PHASE POWER

250A, 208V & 250A, 480V

Scott Wiley

Associate Broker

623.210.3749

scott@citywidecre.com

Kate Wiley

Sales & Leasing

602.313.1000

kate@citywidecre.com

1645 East Missouri Avenue, Suite 230

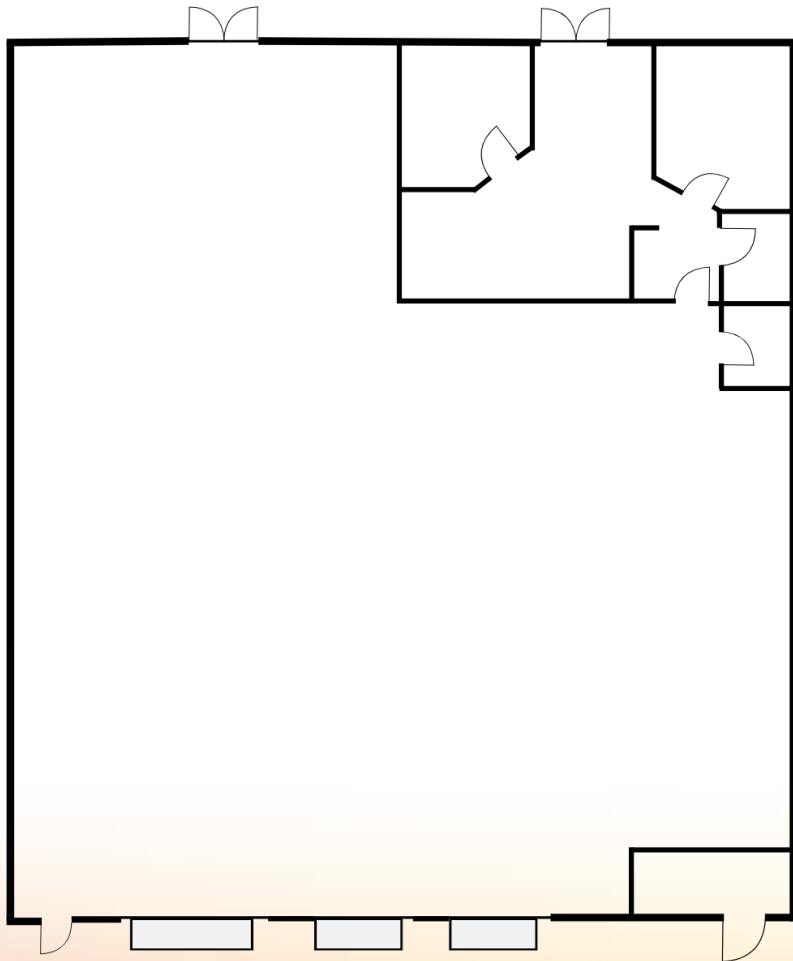
Phoenix, Arizona 85016

602.313.1000 • citywidecre.com

citywide
COMMERCIAL REAL ESTATE

All information furnished is from sources deemed reliable. No representation is made as to the accuracy thereof and it is submitted subject to errors, omissions, changes, or withdrawal without notice and to any special listings conditions, including the rate and manner of payment of commissions for particular offerings imposed by principals or agreed to by the company, the terms of which are available to interested principals or brokers. All dimensions are approximate. Owner and/or Broker make no representations expressed or implied as to the accuracy of floor plan/site plan dimensions.

FLOOR PLAN



SUITE 121-122

