

The logo for NAI Commercial, featuring the letters 'NAI' in a bold, sans-serif font with a red diagonal line through the 'A', followed by the word 'Commercial' in a smaller, black, sans-serif font.

**NAI**Commercial

A red diagonal banner in the top right corner of the image, containing the text '1,025 SF' in white, bold, sans-serif font.

**1,025 SF**

An aerial view of a modern glass skyscraper in a city, reflecting the surrounding buildings and sky. The building is the central focus, with other high-rise buildings visible in the background and foreground.

**#860 - 605 Robson Street** | Vancouver, BC

**FOR LEASE** | Office Space

Opportunity to lease nicely improved office space in Downtown Vancouver, located on the North-West corner of Robson and Seymour Streets. Located steps away from the Canada Line, SkyTrain, bus routes, shops, cafés, and restaurants. Well maintained building with an updated lobby and elevators.

**Roy Gibbs, LL.B**  
Personal Real Estate Corporation  
Commercial Leasing & Sales  
778 834 4050  
rgibbs@naicommercial.ca

**Chris Oteman, B.Sc.**  
Commercial Leasing & Sales  
604 828 0535  
coteman@naicommercial.ca

**NAI Commercial**  
1075 W Georgia St, Suite 1300  
Vancouver, BC V6E 3C9  
+1 604 683 7535  
naicommercial.ca

# #860 - 605 Robson Street

Vancouver, BC

## Property Details

**Unit Size:** 1,025 SF

**Net Rent:** \$27.00/SF

**Additional Rent:** \$21.15/SF (2025)

**Availability:** Immediate

- ▶ 2 offices (could easily be 3 offices) open space and kitchenette
- ▶ South facing with ample natural light

### Premises:

South facing premises improved with 2 window offices with glass partitions and full-height doors, open space and a kitchenette. Possible to add a 3<sup>rd</sup> window office. The Premises are filled with natural light and in move-in-ready condition.

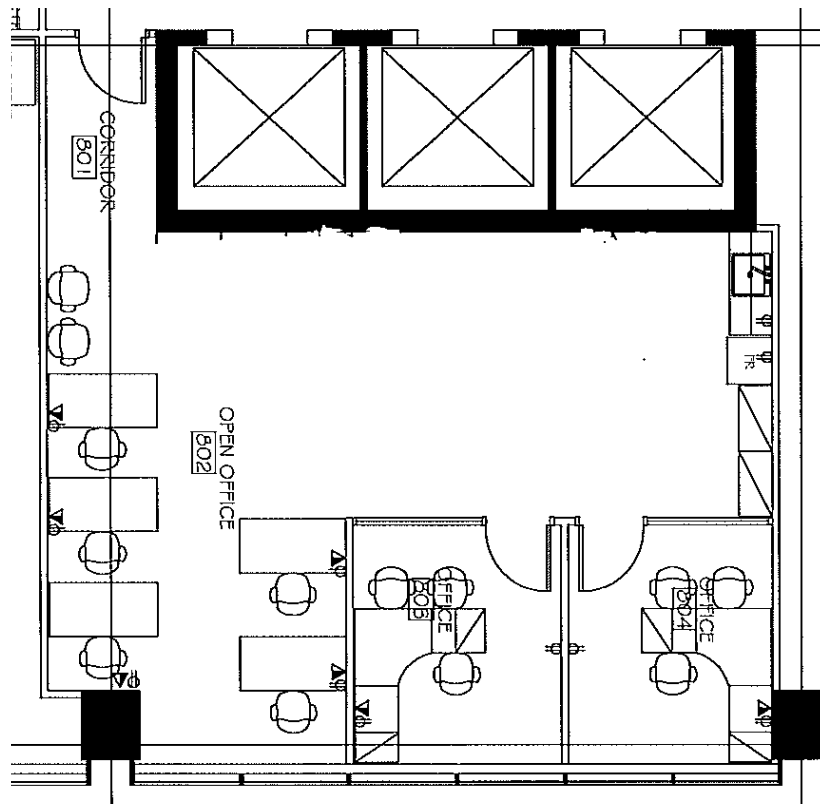
### Building Details:

605 Robson Street is one block from Vancouver City Centre Skytrain Station and provides abundant visitor parking (available at half hour, hourly, or full day rates).

The building also provides abundant random and reserved tenant parking, secure bicycle storage, and end of trip facilities.

On-site ownership and management provides first-class service to tenants.

## Floor Plan



**Roy Gibbs, LL.B**

Personal Real Estate Corporation  
Commercial Leasing & Sales  
778 834 4050  
rgibbs@naicommercial.ca

**Chris Oteman, B.Sc.**

Commercial Leasing & Sales  
604 828 0535  
coteman@naicommercial.ca

**NAI Commercial**



LAW COURTS

ROBSON SQUARE

VANCOUVER CITY CENTRE

PACIFIC CENTRE

GRANVILLE

605 ROBSON

ORPHEUM

SEYMOUR ST

ROBSON ST

VANCOUVER PUBLIC LIBRARY

**WITHIN 5-MIN WALKING DISTANCE**

- Five Guys
- Meat & Bread
- Blenz Coffee
- Aladdin Café
- Guu Japanese
- Bahar Bakery & Cafe
- H-Mart
- Cafe Monet Bakery
- Tractor Foods
- JINYA Ramen
- JAPADOG
- CIBC Bank
- The Ox Pub
- Chipotle Mexican
- Jollibee
- Starbucks
- Tim Hortons
- Glowbal
- London Drugs
- Pacific Centre
- Hudson's Bay
- Popeyes
- McDonald's
- Dublin Calling Bar
- Staples
- Fable Diner & Bar
- Cafe Medina
- Viet Sub Vietnamese
- Falafel King
- Paramount Fine Foods
- Gong Cha
- Taf's Cafe
- The Fountainhead Pub

Roy Gibbs, LL.B  
 Personal Real Estate Corporation  
 Commercial Leasing & Sales  
 778 834 4050  
 rgibbs@naicommercial.ca

Chris Oteman, B.Sc.  
 Commercial Leasing & Sales  
 604 828 0535  
 coteman@naicommercial.ca



No warranty or representation, express or implied, is made as to the accuracy of the information contained herein, and the same is submitted subject to errors, omissions, change of price, rental or other conditions, prior sale, lease or financing, or withdrawal without notice, and of any special listing conditions imposed by our principals no warranties or representations are made as to the condition of the property or any hazards contained therein are any to be implied. Aerial image(s) courtesy of Google, Landsat/Copernicus

NAI Commercial  
 1075 W Georgia St, Suite 1300  
 Vancouver, BC V6E 3C9  
 +1 604 683 7535  
 naicommercial.ca