

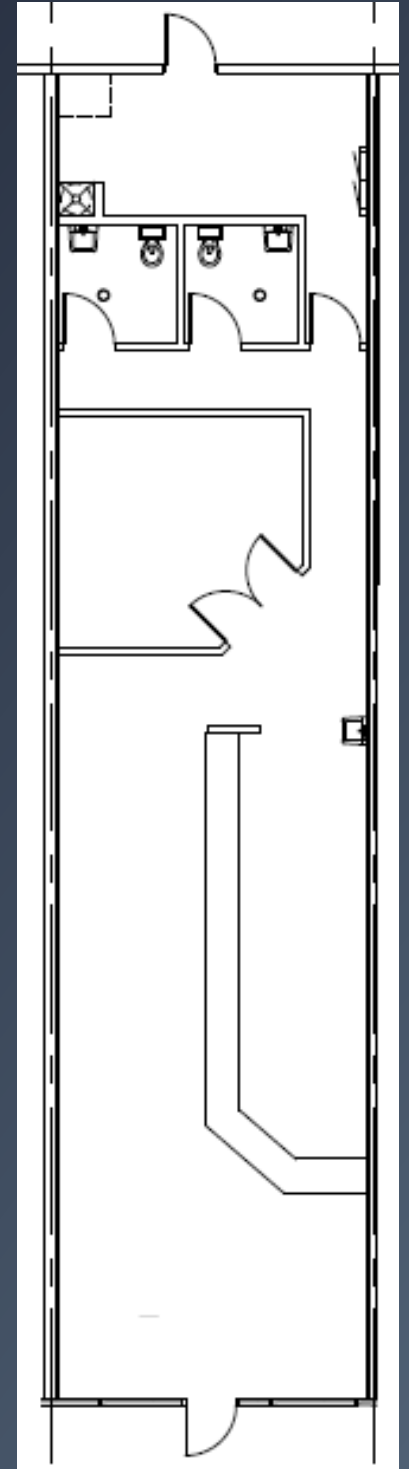
# SUITE 2449

## PRICING

Size: 1,515 SF  
Base Rent: \$32.00 PSF/yr.  
Triple Nets: \$7.96 PSF/yr.  
Total: \$5,045/mo.

## COMMENTS

- Move In Ready
- As is condition
- 3% annual escalations



Phillip Carameros | (832.937.5900) | Phillip@gordonpartners.com  
Jenny Nguyen | (409.900.2060) | jenny@gordonpartners.com