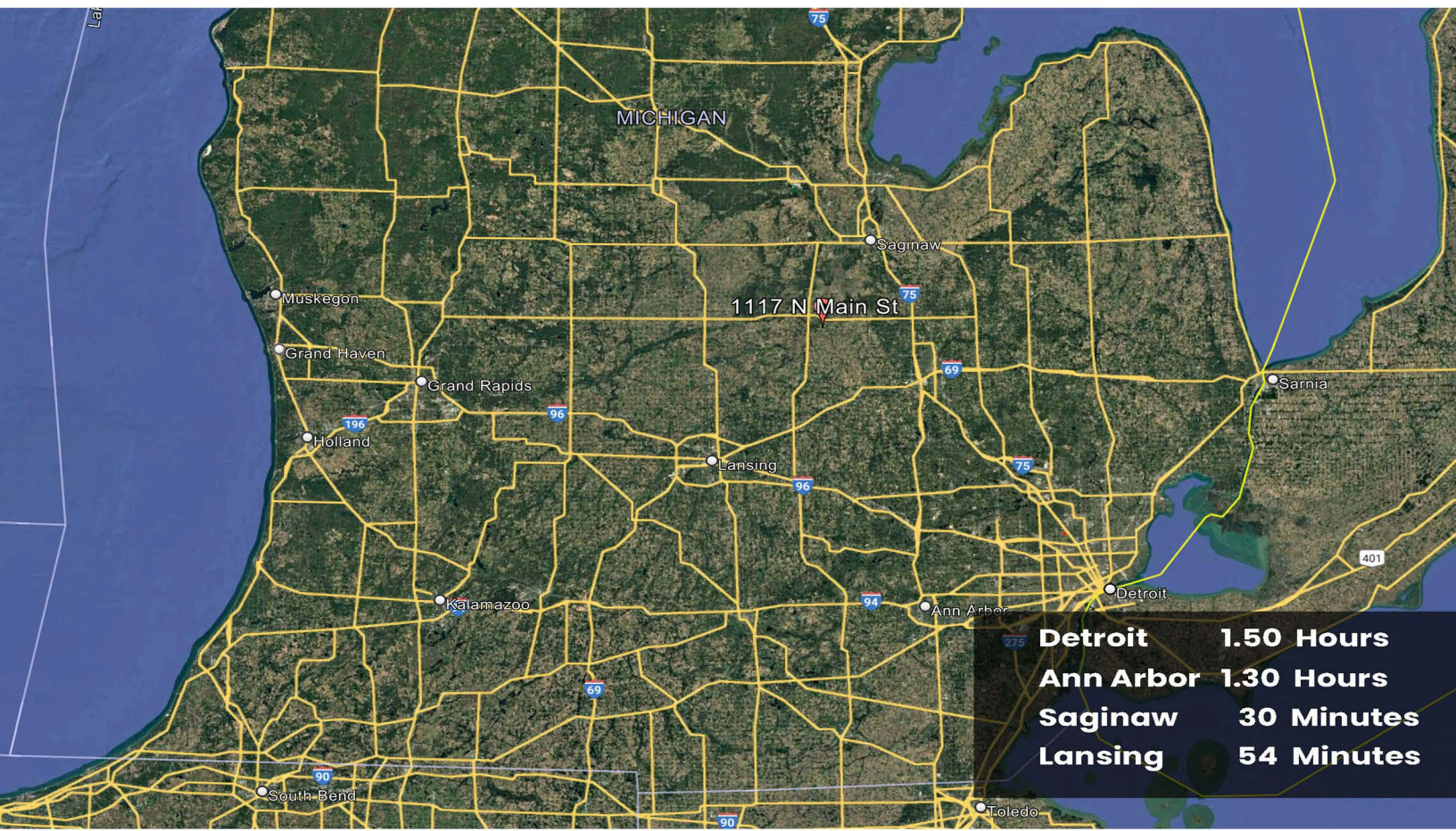


ADULT USE GROW & PROCESSING FACILITY

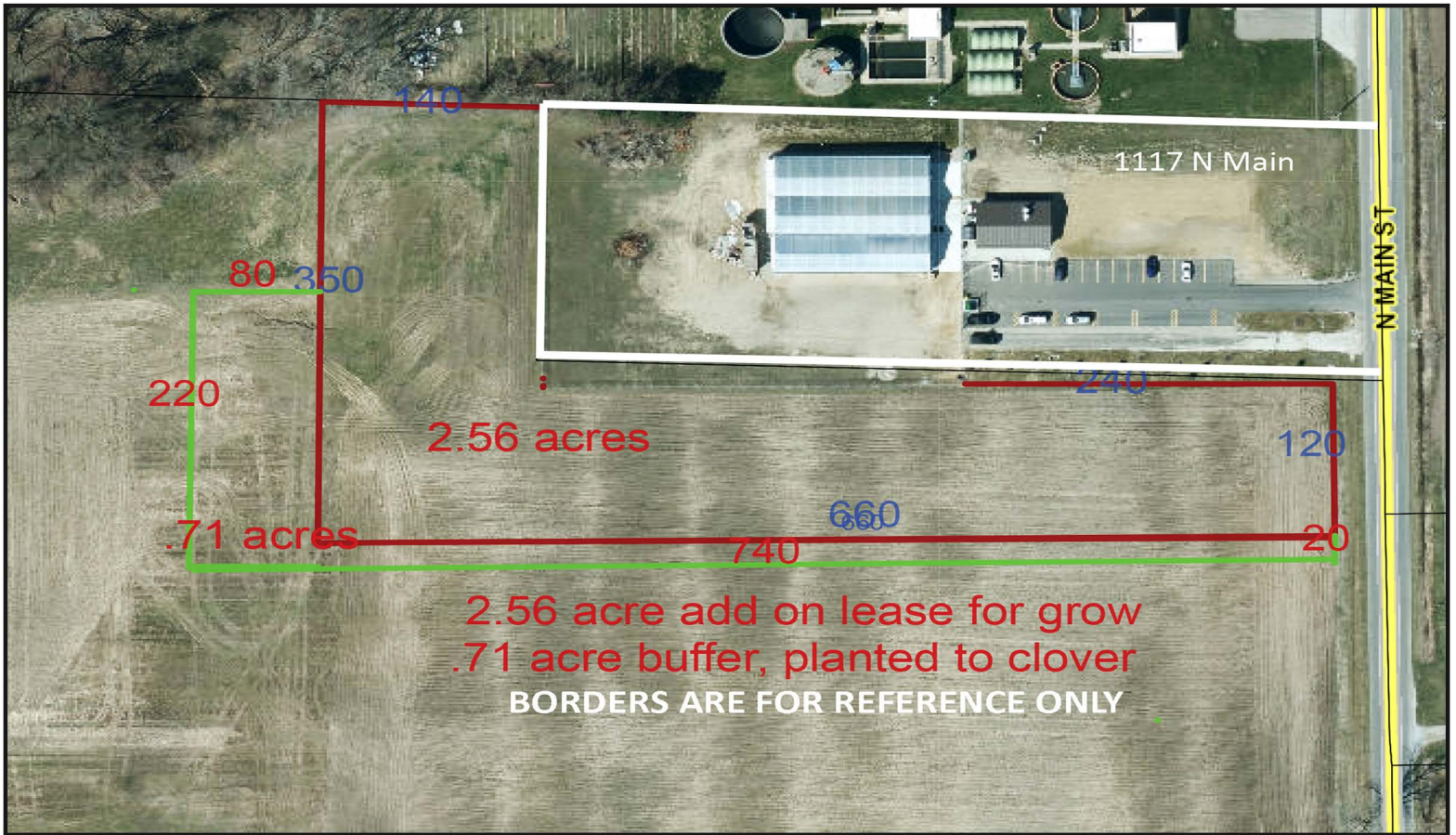
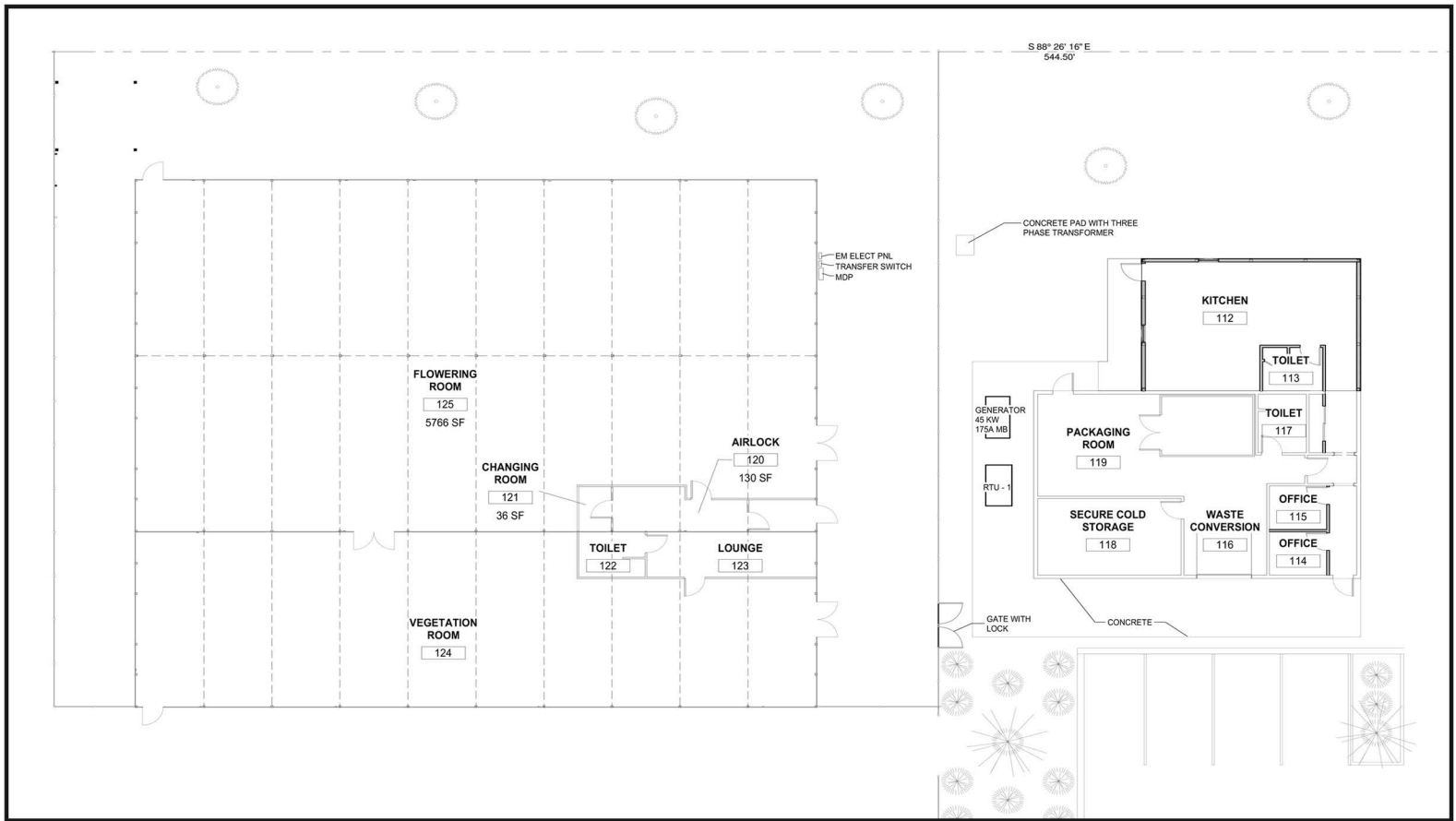


1117 N. MAIN STREET | CHESANING, MI

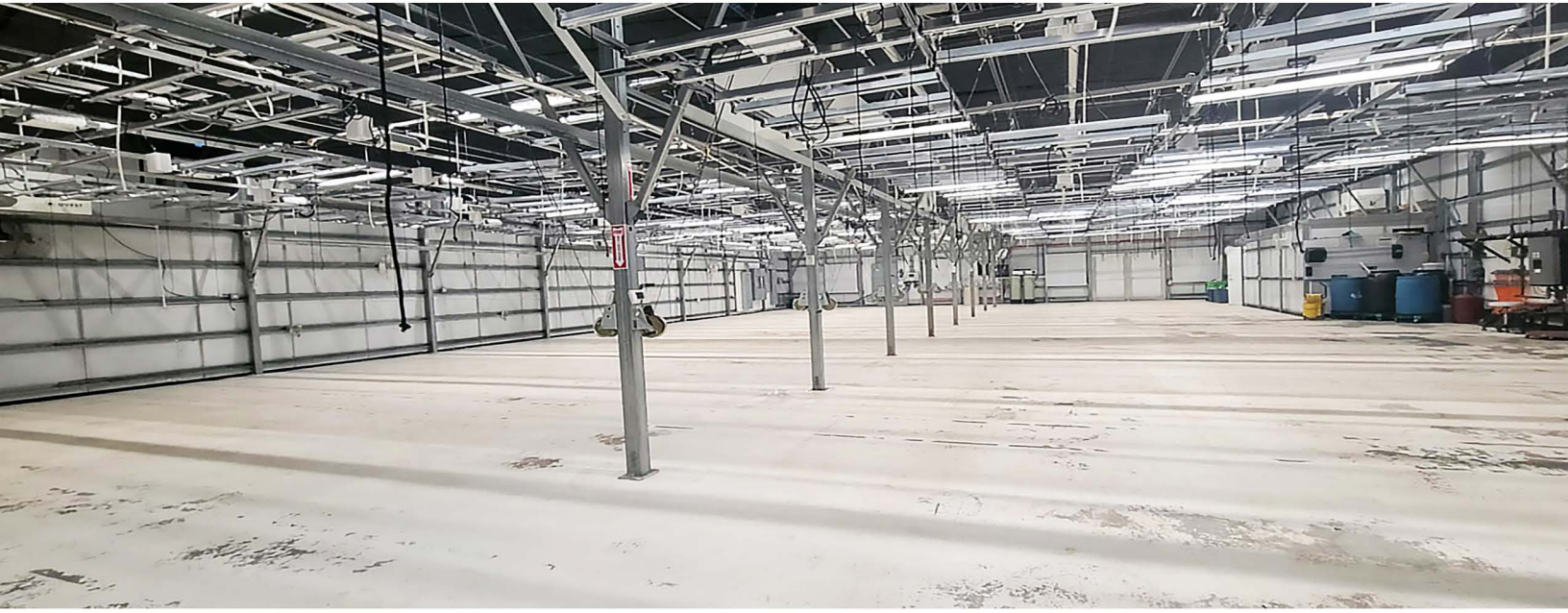
11,284 TOTAL SF | BUILT 2018 | GREENHOUSE 9,000 SF | 1,536 SF PROCESSING LAB
640 SF KITCHEN | 2.50 ACRES WITH ADDITIONAL 3.00 ACRES FOR LEASE - STATE AND
LOCALLY APPROVED | 184 LED LIGHTS AND 70 GAVITA PRO 1000 LIGHTS | FULL IN
FLOOR RADIANT BOILER SYSTEM - NATURAL GAS | TWO 5" HOOKED TOGETHER WELLS
8 YORK AC UNITS | 6 FODINE FORCED AIR FURNACES | RHEEM COMMERCIAL
SERIES HVAC UNIT | 10,000 GALLONS OF WATER TANKS | 277 480 VOLT 3 PHASE POWER
GENERAC BACKUP GENERATOR AND MORE

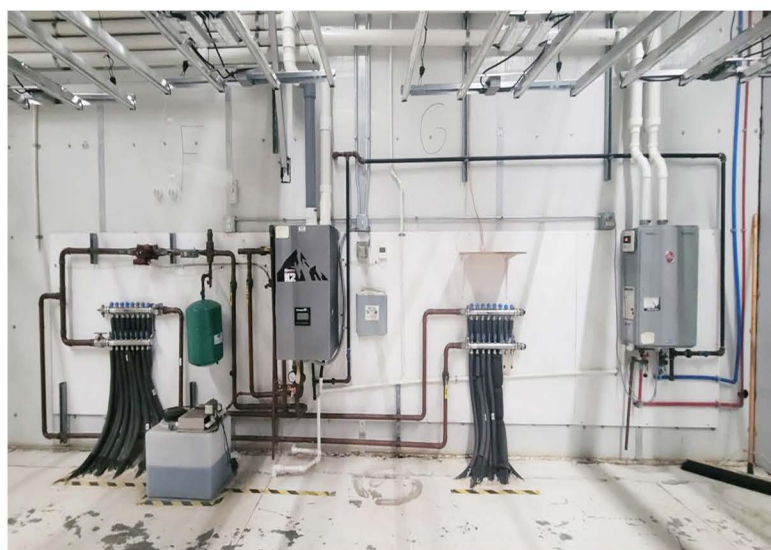
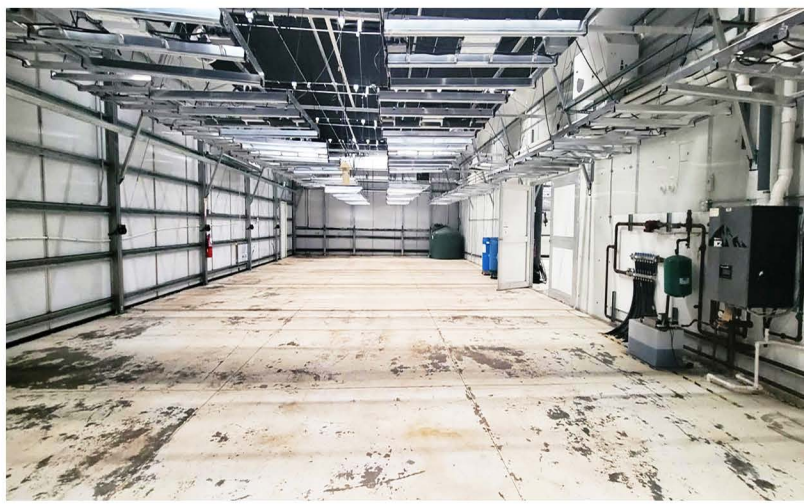
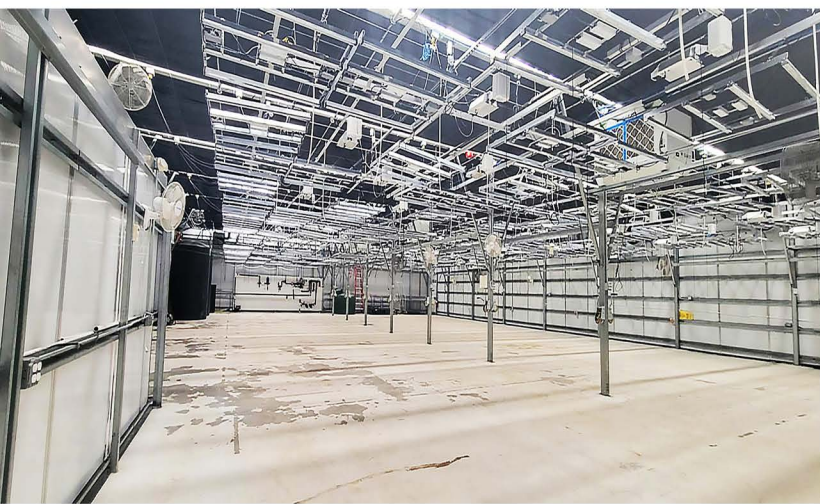


500 S. Old Woodward Avenue - Birmingham, MI 48009





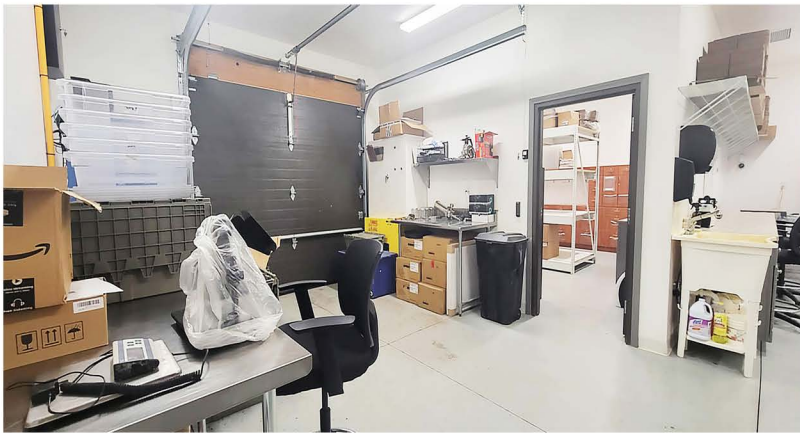
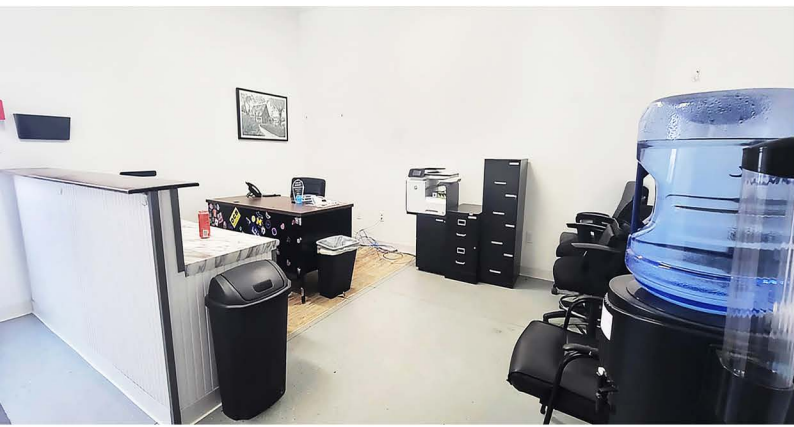




HUDSON
REAL ESTATE

500 S. Old Woodward Avenue - Birmingham, MI 48009

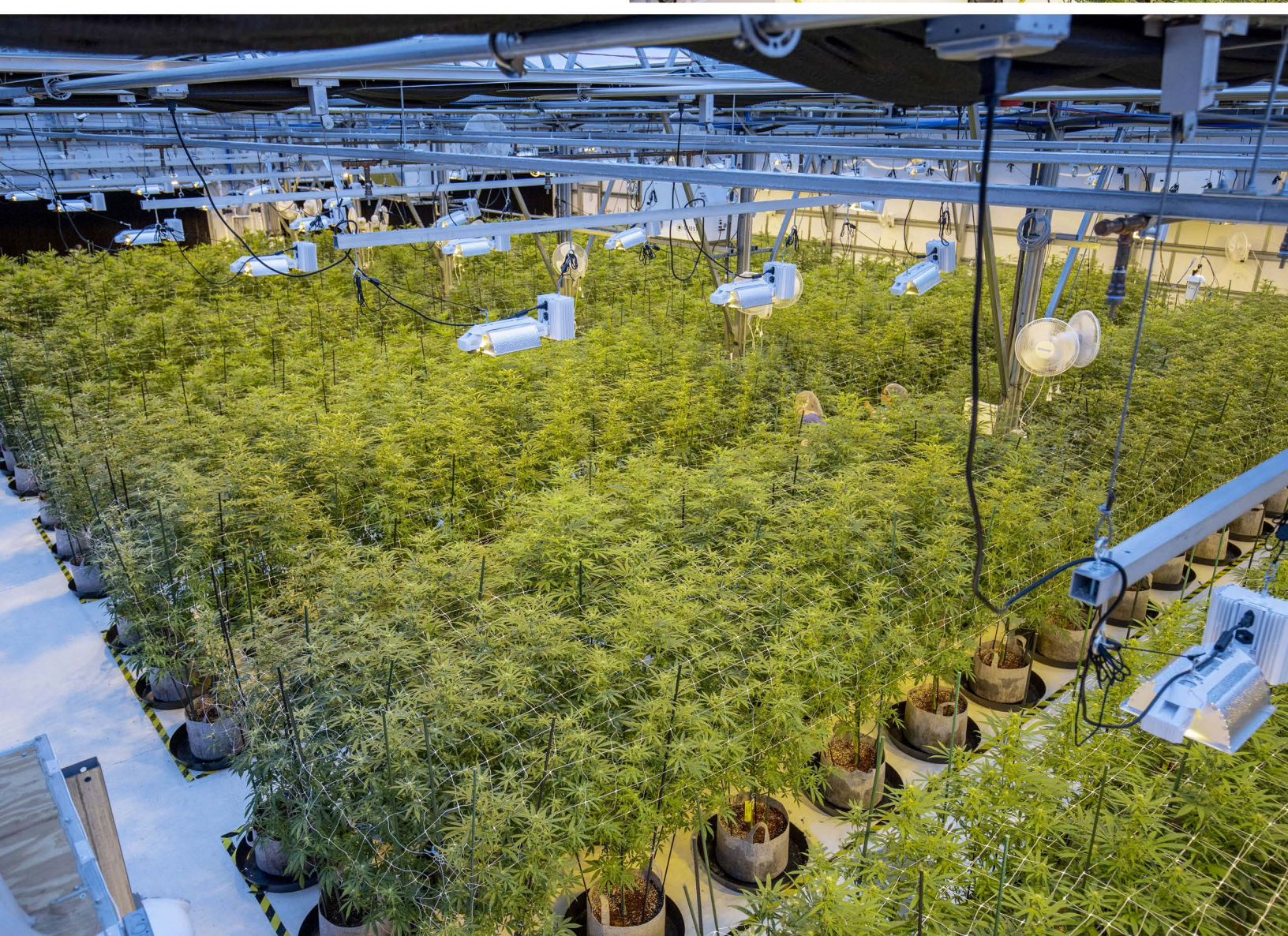






HUDSON
REAL ESTATE

500 S. Old Woodward Avenue - Birmingham, MI 48009



HUDSON
REAL ESTATE

500 S. Old Woodward Avenue - Birmingham, MI 48009



HUDSON
REAL ESTATE

500 S. Old Woodward Avenue - Birmingham, MI 48009

INVENTORY

GREENHOUSE – FLOWER ROOM (6,000 SF)

- 6 Quest Dual Dehumidifiers
- 2 Quest 876 Dehumidifiers
- 5 12.5-Ton York AC Units
- 4 Fodine Forced Air Furnace Units
- 2 1500 Gallon Water Tanks
- 2 Dositron D40MZ3000
- 1 Dositron D40MZ5
- 106 Grow Ray LED 4 Bar Lights
- 30 Grow Ray LED 6 Bar Lights
- 70 Gavita Pro 1000
- 2000 5 Gallon Pots/Trays/Risers (Each)
- Grundfos 2 Inch WiFi Irrigation Pump
- Fully Plumbed CO2 System
- Automated Recirculating Fan System
- Rain Bird Pick Irrigation Lines and Drippers

GREENHOUSE – VEG ROOM (3,000 SF)

- 3 Quest Dual Dehumidifiers
- 3 10-Ton York AC Units
- 2 Fodine Forced Air Furnace Units
- 2 500 Gallon Water Tanks
- 4 Mixing Barrels with Submergible Pumps
- 48 Grow Ray LED 4 Bar Lights
- Automated Recirculating Fan System
- HydroPolis 4' x 12' Clone Tent

GREENHOUSE – 9,000 TOTAL SF

Flower and Veg Rooms operate on a Ritter Hortimax Automated System with Tork Light Controls.

Fully automated light/dep system with in-floor radiant natural gas boiler systems.

Irrigation Water Supply - Two 5" Hooked Together Wells

277/480 V 3 Phase Power

Natural Gas and City Sewer



INVENTORY

OUTDOOR GROW - 4 ACRES

- 1 6000 Gallon Water Tank
- 1 2" Gas Irrigation Pump
- 1 1/2" Buried Irrigation Line to Grow Field
- 2 Climate Controlled Storage Containers 8' x 20' (Heat, Cooling, Humidity)
- 1 40' Tool Crib Trailer
- 1 40' Cold Storage Container
- 1 VZ TEC De-Bucker Machine
- 500 Large Growing Pots
 - 10' FT Chain Link Fence Around Entire Outdoor Grow
 - 3/4" Irrigation Hookup for Irrigation Lines
- 72 Surveillance Camera Security System
- 1 12' x 50' Office Trailer - Desk and Furniture Included
- 1 Toyota Fork Truck
- 1 Generac Back Up Generator - AC 480 V 50/60 Hz - Runs on Natural Gas
 - 460 V 3 Phase Power
 - American Security Safe

KITCHEN - (640 SF)

- Truffley Made Depositor
- Truffley Made De-Molder
- Edible Package Sealer
- Emulsifier
- 120 Gummy Molds
- 6 Rolling Tray Racks with Trays
- 4 Digital Cooking Hot Plates
- Mitsubishi Electric Mini Splt - MUZ-FH18NAH2

INVENTORY

PROCESSING LAB - (1,536 SF)

Precision 10' x 12' CID1 Room with Full Fire Suppression and Gas Detection

Precision PX 1 with 4" CRC

Precision X 10 with 6" CRC

Julabo Chiller PF89

Julabo Chiller A80

2 Coil Chillers

2 Julabo Heaters BC12

2 Welch CRV PRO 8 Vac Pump

2 GC 5000 Precision Pump

2 International Elite Series Vacuum Oven

2 Cascade CVO 5-1 Ovens on Double Stack Cart

2 Welch Oven Vac Pumps

4' x 12' Hemco Distillate Booth

Rotary Evaporator

Koray Chiller DLSB 10-30

5 Liter Short Path Distillate

Artic Air Double Door Commercial Freezer

Bubble Magic Pollen Tumbler

LD-3 Electric Centrifuge

Rheem Commercial Series Forced Air / AC Unit - RKPN-A060CL13E - Natural Gas

INVENTORY

GREENHOUSE – FLOWER ROOM (6,000 SF)

- 6 / 9 Quest Dual Dehumidifiers
- 2 Quest 876 Dehumidifiers
- 5 12.5-Ton York AC Units
- 4 Fodine Forced Air Furnace Units
- 2 1500 Gallon Water Tanks
- 2 Dositron D40MZ3000
- 1 Dositron D40MZ5
- 106 / 155 Grow Ray LED 4 Bar Lights
- 30 Grow Ray LED 6 Bar Lights
- 70 Gavita Pro 1000
- 2000 5 Gallon Pots/Trays/Risers (Each)
- Grundfos 2 Inch WiFi Irrigation Pump
- Fully Plumbed CO2 System
- Automated Recirculating Fan System
- Rain Bird Pick Irrigation Lines and Drippers

GREENHOUSE – VEG ROOM (3,000 SF)

- 3 Quest Dual Dehumidifiers
- 3 10-Ton York AC Units
- 2 Fodine Forced Air Furnace Units
- 2 500 Gallon Water Tanks
- 4 Mixing Barrels with Submergible Pumps
- 48 Grow Ray LED 4 Bar Lights
- Automated Recirculating Fan System
- HydroPolis 4' x 12' Clone Tent

Flower and Veg Rooms operate on a Ritter Hortimax Automated System with Tork Light Controls.
Fully automated light/dep system with in-floor radiant natural gas boiler systems.
Irrigation Water Supply - Two 5" Hooked Together Wells
277/480 V 3 Phase Power
Natural Gas and City Sewer

CONTACT INFO

ANNE SCHULTZ

810-444-9476

anne@schultz-realty.com

The information in this document is for marketing purposes only. Hudson Real Estate does not assume any responsibility for, nor does it warrant the accuracy or completeness of the information provided. It is the sole responsibility of the Purchaser(s) to exercise due diligence to ensure the property and/or business meets the necessary requirements for its intended use.

