

## OFFICE SPACES FOR HEALTHCARE PROVIDERS 300 Regent Park Ct, Greenville, SC



**Exceptional location / 385 & Butler Rd**

### Available Options:

Offices :

- (2) 100 Sq/Ft = \$600 GROSS
- (1) 152 Sq/Ft = \$700 GROSS

Large Open Space /Custom Flex Flooring

- ( 1500 Sq/Ft) \$24/Sq/ft GROSS

### Amenities

- Shared Reception
- Ample Parking
- Break Room
- All Utilities Included



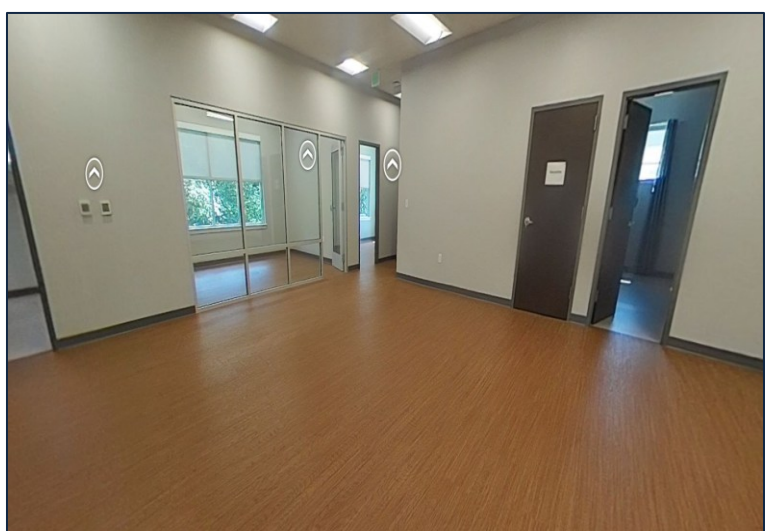
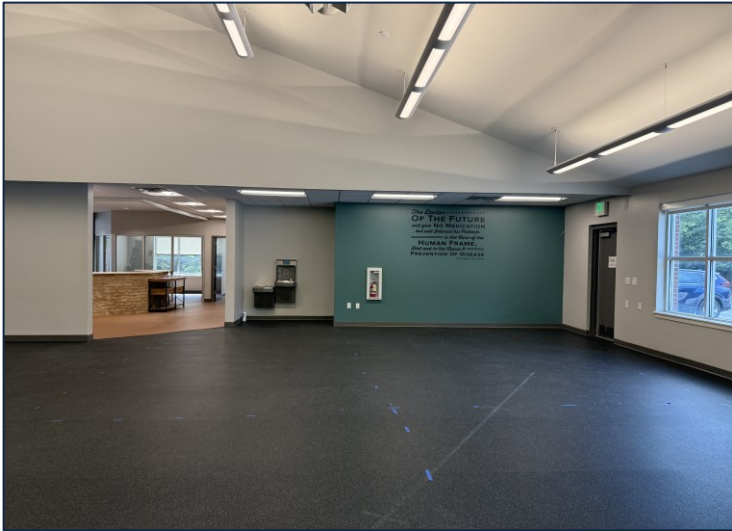
No warranty or representation, expressed or implied, is made to the accuracy of the information contained herein, and the same is submitted subject to errors, omissions, change of price, rental or other conditions, imposed by the principals.

# FOR LEASE

## OFFICE SPACES FOR HEALTHCARE PROVIDERS

### 300 Regent Park Ct, Greenville, SC

29607



No warranty or representation, expressed or implied, is made to the accuracy of the information contained herein, and the same is submitted subject to errors, omissions, change of price, rental or other conditions, imposed by the principles.

**Matt M. Foster** • [matt@fostercommercial.com](mailto:matt@fostercommercial.com) • 864-360-7780 • [fostercommercial.com](http://fostercommercial.com)