

AVAILABLE: ± 986 SF HAIR SALON SPACE



PROPERTY OVERVIEW

Two-story, 16,914 SF building ideal for retail, professional, medical and service firms.

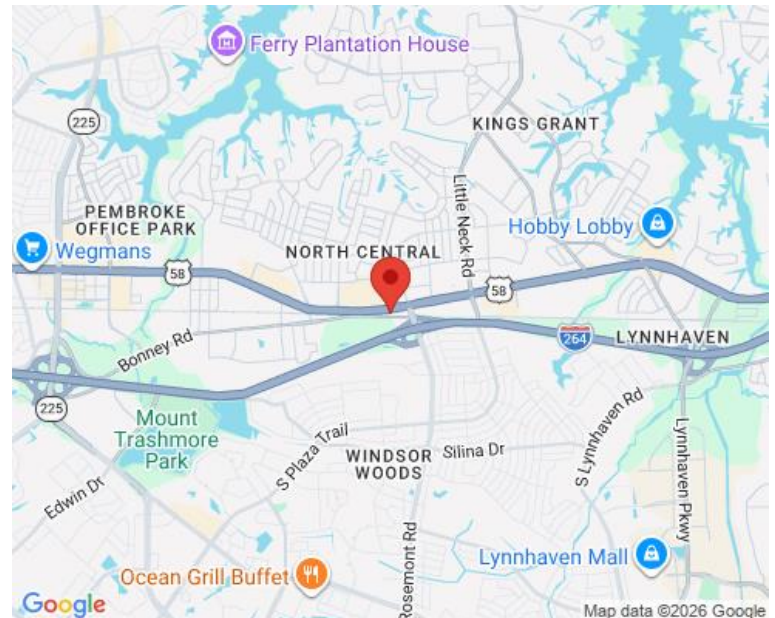
- Convenient location approximately 1/4 mile from I-264 at the Rosemont Road exit
- Ample parking; no CAM fees
- 24/7 Access
- Great one to two-room offices for small businesses!

AVAILABLE OFFICE SPACE: ±202 - 577 SF
AVAILABLE RETAIL SPACE: ±986 SF

DEMOGRAPHICS

Radius:	1 mile	3 mile	5 mile
Population:	16,251	114,581	273,314
Average HH Income:	\$85,420	\$90,006	\$96,900
Traffic Count:	48,000 VPD		

AREA MAP



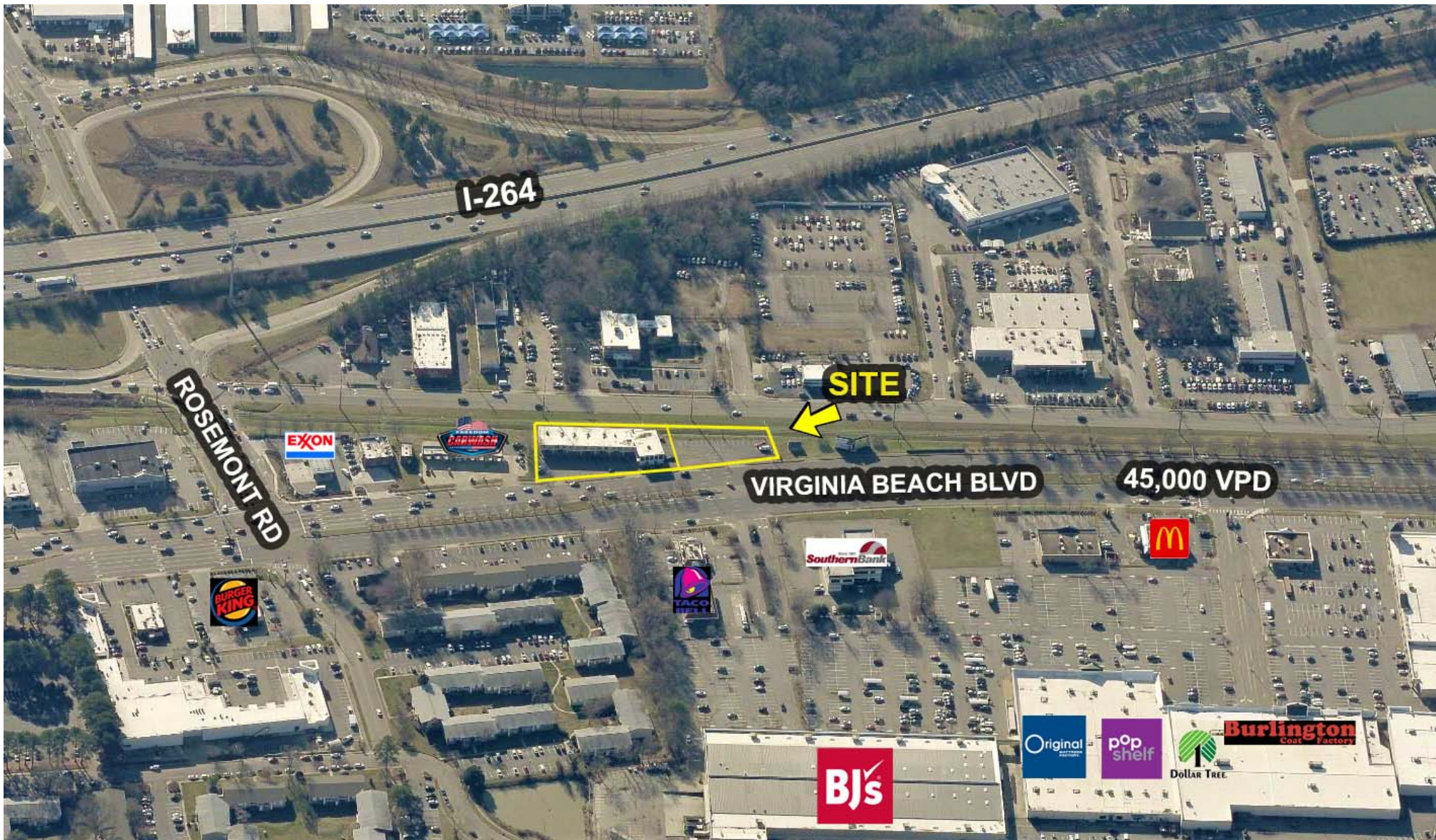
FOR MORE INFORMATION, PLEASE CONTACT:

LENNY BURNS
(757) 490-3141
lburns@pembrokerealty.com

Pembroke Realty Group
4433 Corporation Lane, Suite 250
Virginia Beach, VA 23462
www.pembrokerealty.com

3707 Virginia Beach Blvd.

± 202 - 986 SF AVAILABLE



FOR MORE INFORMATION, PLEASE CONTACT:

LENNY BURNS

(757) 490-3141

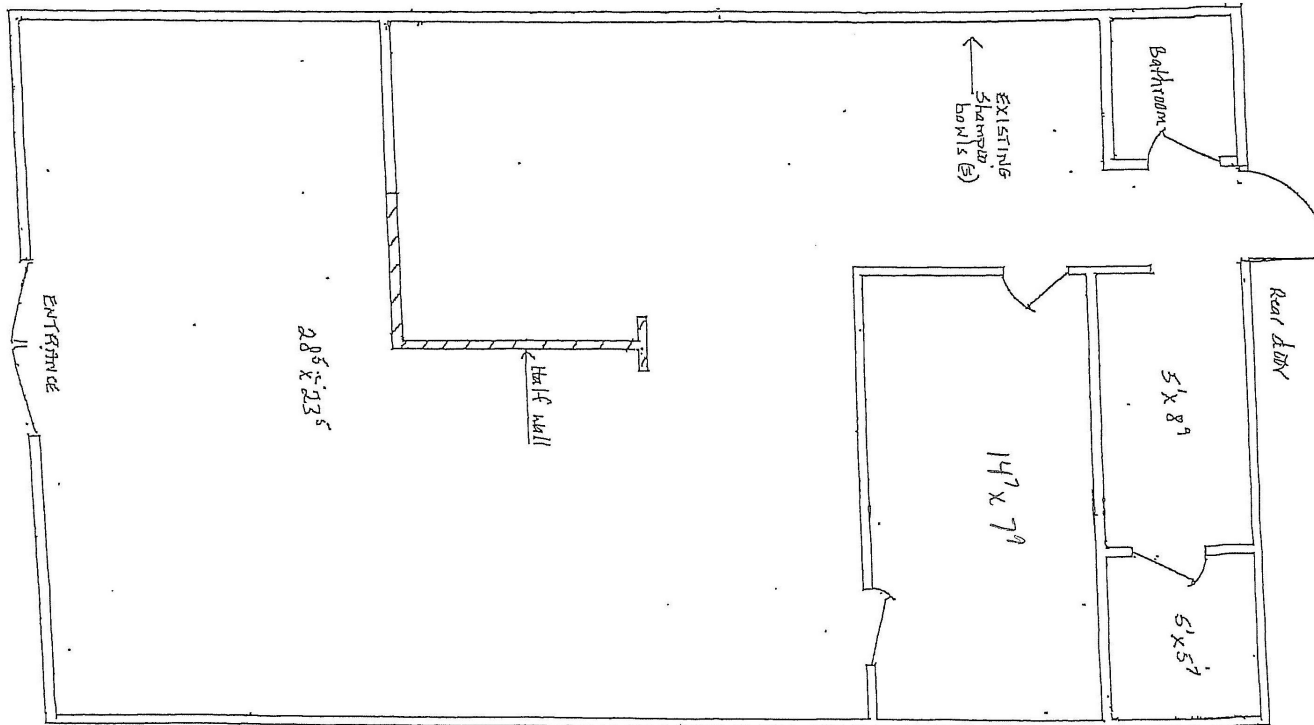
lburns@pembrokerealty.com

Pembroke Realty Group

4433 Corporation Lane, Suite 250

Virginia Beach, VA 23462

www.pembrokerealty.com



*Baylor Building
Suite 105
4,986 SF
(NOT TO SCALE)*

FOR MORE INFORMATION, PLEASE CONTACT:

LENNY BURNS

(757) 490-3141

lburns@pembrokerealty.com

Pembroke Realty Group

4433 Corporation Lane, Suite 250

Virginia Beach, VA 23462

www.pembrokerealty.com