



## 1000 East 111th Street Chicago, IL

- Premier high rise office Building in Chicago's Historic Pullman District- 12 Stories, 96,000 Square Foot Building
- Highly visible building with direct access to the freeway, easy access to parking, beautiful floor-to-ceiling glass, and great views of the city, on-site Banking.
- Office Asking Rates is \$16.00 Full Service Gross
- On-site Property Management
- Space available from 2,800 to 5,323 Square feet



∴ Steven Boemer  
Vice President  
414.351.6312  
steven.boemer@usbank.com

∴ Steve Raysich  
Transaction Manager  
262.252.3007  
steven.raysich@usbank.com



Suite/ Unit Number: 3rd Floor  
Space Available: 5,323SF  
Minimum divisible: 5,323 SF  
Maximum Contiguous: 5,323 SF

---

Suite/ Unit Number: 4th Floor  
Space Available: 5,323 SF  
Minimum divisible: 5,323 SF  
Maximum Contiguous: 5,323 SF

---

Suite/ Unit Number: 5th Floor  
Space Available: 5,323 SF  
Minimum divisible: 2,700SF  
Maximum Contiguous: 5,323 SF

---

Suite/ Unit Number: 6th Floor  
Space Available: 3,500 SF  
Minimum divisible: 3,500 SF  
Maximum Contiguous: 3,500 SF

---

Suite/ Unit Number: 7th Floor  
Space Available: 2,800 SF  
Minimum divisible: 2,800 SF  
Maximum Contiguous: 2,800 SF

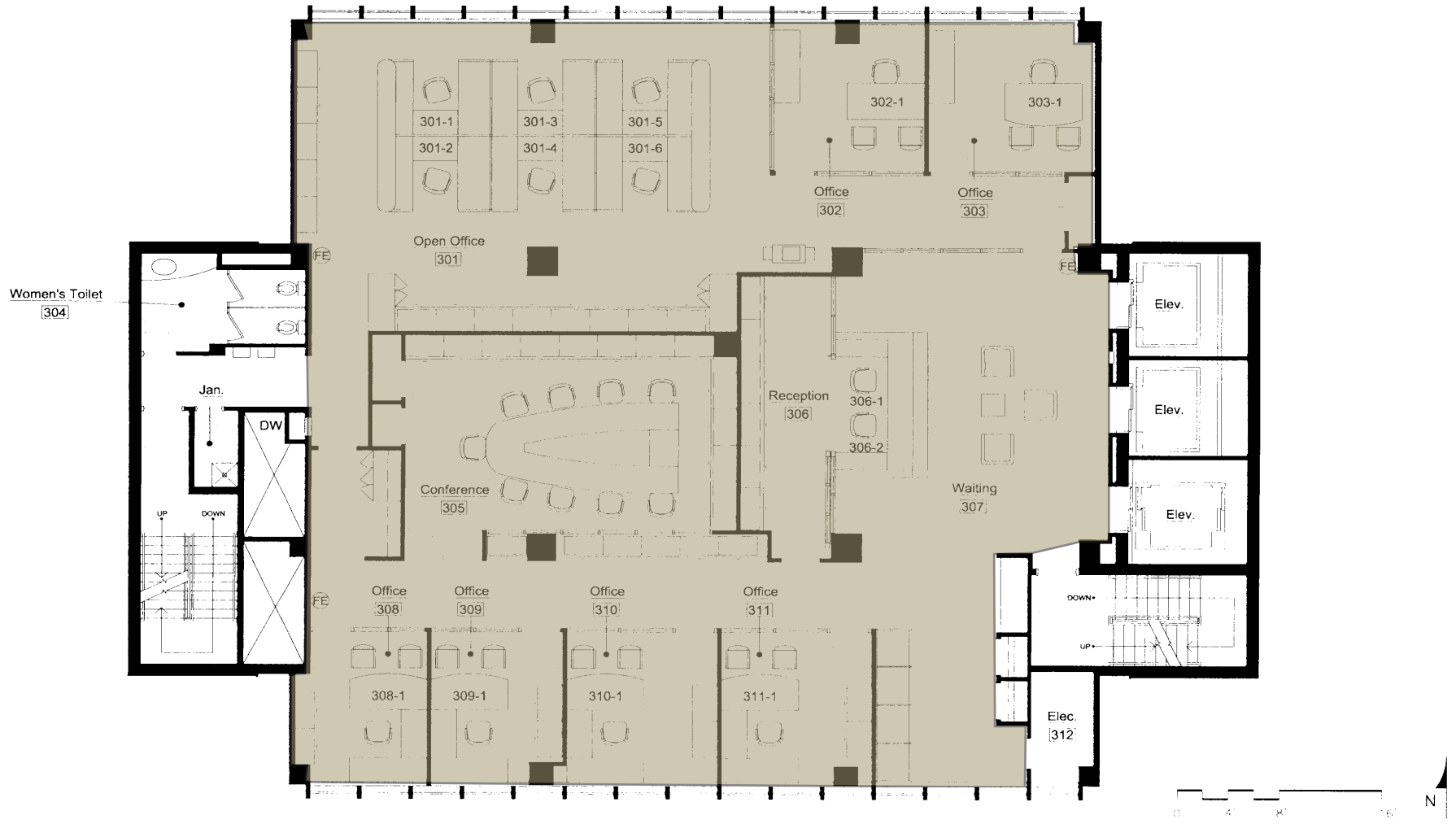
---



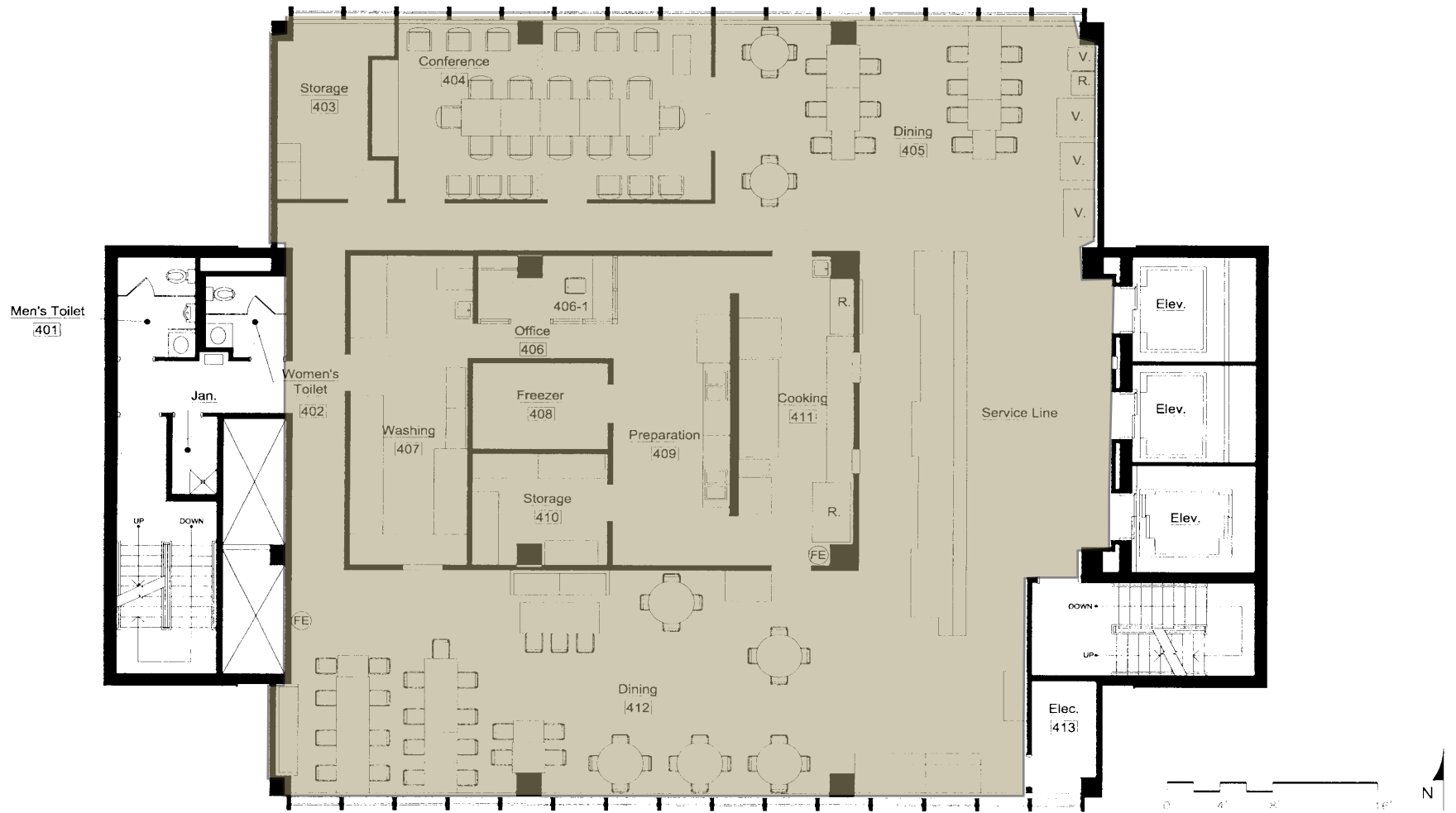
:: Steven Boemer  
Vice President  
414.351.6312  
steven.boemer@usbank.com

:: Steve Raysich  
Transaction Manager  
262.252.3007  
steven.raysich@usbank.com

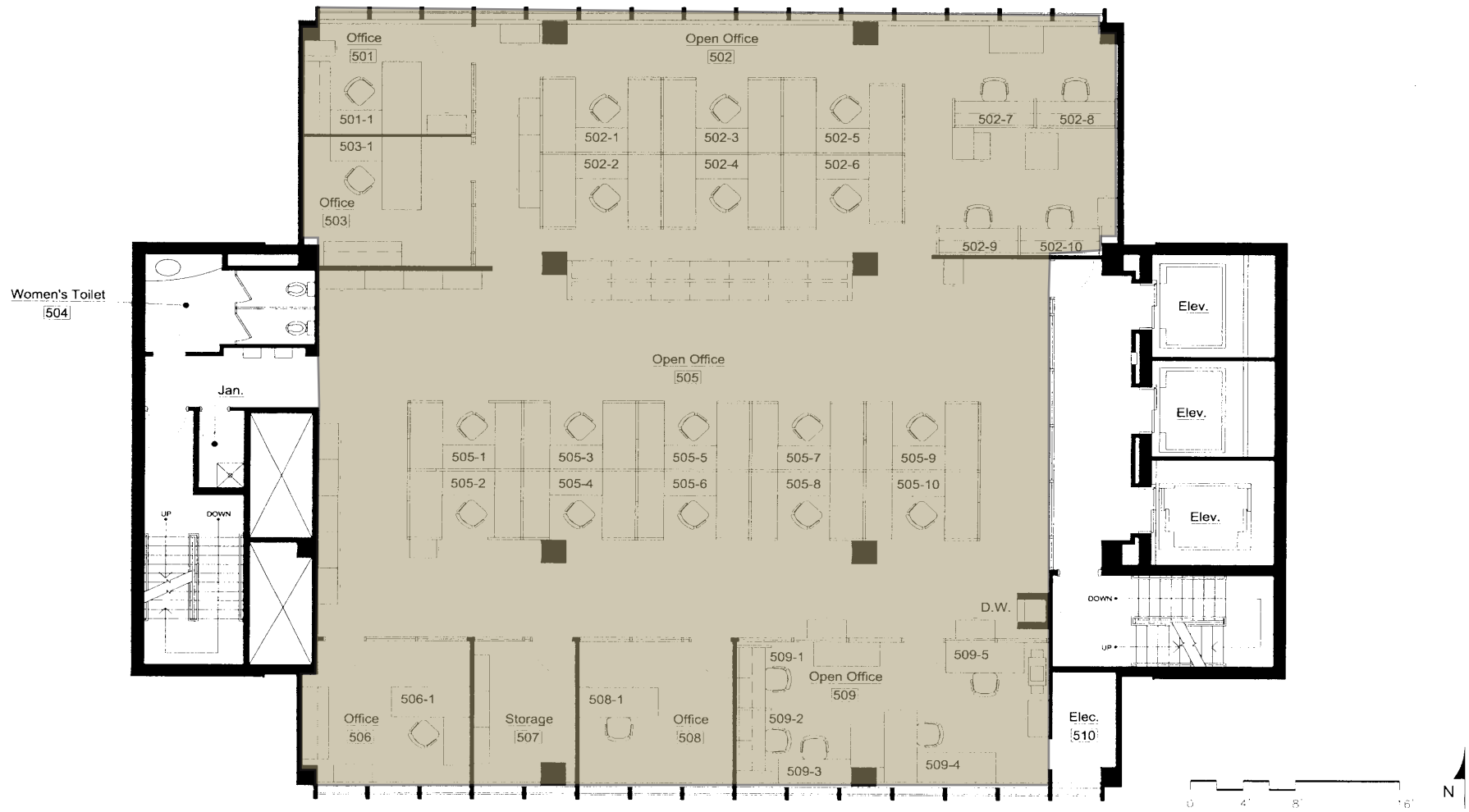




THIRD FLOOR - 5,323 RSF



FOURTH FLOOR - 5,323 RSF



FIFTH FLOOR - 5,323 RSF



SIXTH FLOOR - 3,500 RSF



SEVENTH FLOOR - 2,800 RSF