

# OFFICE SPACE FOR LEASE

100 JERSEY AVENUE, SETAUKET NY (UNIT #9)

1,100 SF AVAILABLE



**CARMINE INSERRA**

Executive Director

+1 631 270 3030

[carmine.inserra@cushwake.com](mailto:carmine.inserra@cushwake.com)



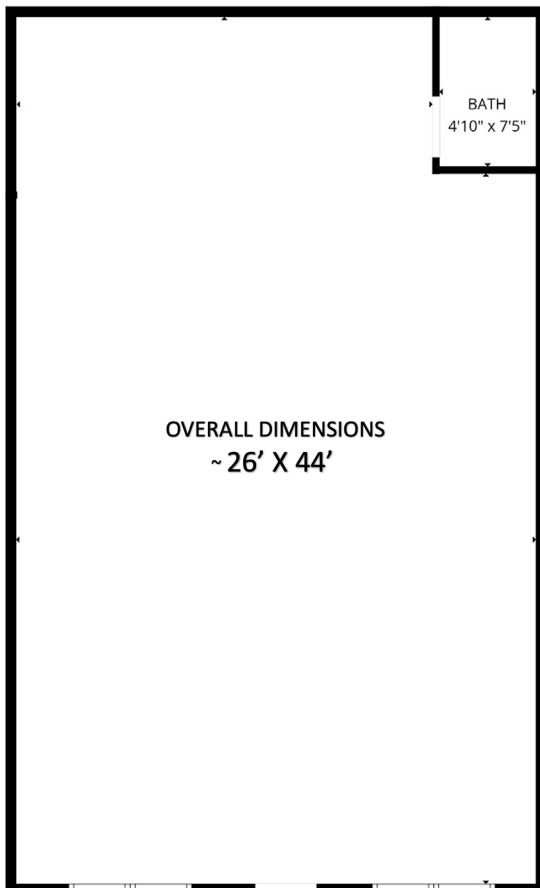
# PROPERTY HIGHLIGHTS

## Available Space

1,100 SF of flexible office space

## Comments

- Perfect for financial, legal, medical, real estate or general office space
- Close to Stony Brook University, Stony Brook Hospital, St. Charles, and Mather
- Prestigious Heritage Square Office Condominiums
- Prominent Business Neighbors and abundant parking
- Directly adjacent to multiple food and shopping options
- Will build to suit



## CARMINE INSERRA

Executive Director

+1 631 270 3030

carmine.inserra@cushwake.com