

**FOR
LEASE**

**\$1 PSF
BROKER BONUS**

IPG SAGE

18006

SKYPARK

18006 SKY PARK CIRCLE | IRVINE, CALIFORNIA
±3,120 OFFICE SPACE AVAILABLE

PROPERTY FEATURES

- ±24,772 square foot low rise office building
- Open, efficient office space with extensive glass line
- Located in the heart of the Orange County Airport (JWA) area
- Direct access to major freeways
- Minutes away from restaurants, health clubs and amenities
- Free common parking with direct access
- Turn-key suites for immediate occupancy
- Furniture Available

AVAILABILITIES

Suite 201: ±3,120 USF at \$2.25 FSG

- Reception, 5 private offices, 1 large executive office with private restroom, and open area (cubicles available)
- Available 10/1/26



ALLEN BASSO
Senior Vice President
Lic. #01298152
949.790.3130
abasso@leeirvine.com



ERIC DARNELL
Senior Vice President
Lic. #01888743
949.790.3157
edarnell@leeirvine.com



KYLEE KING
Vice President
Lic. #02101275
949.790.3108
kking@leeirvine.com

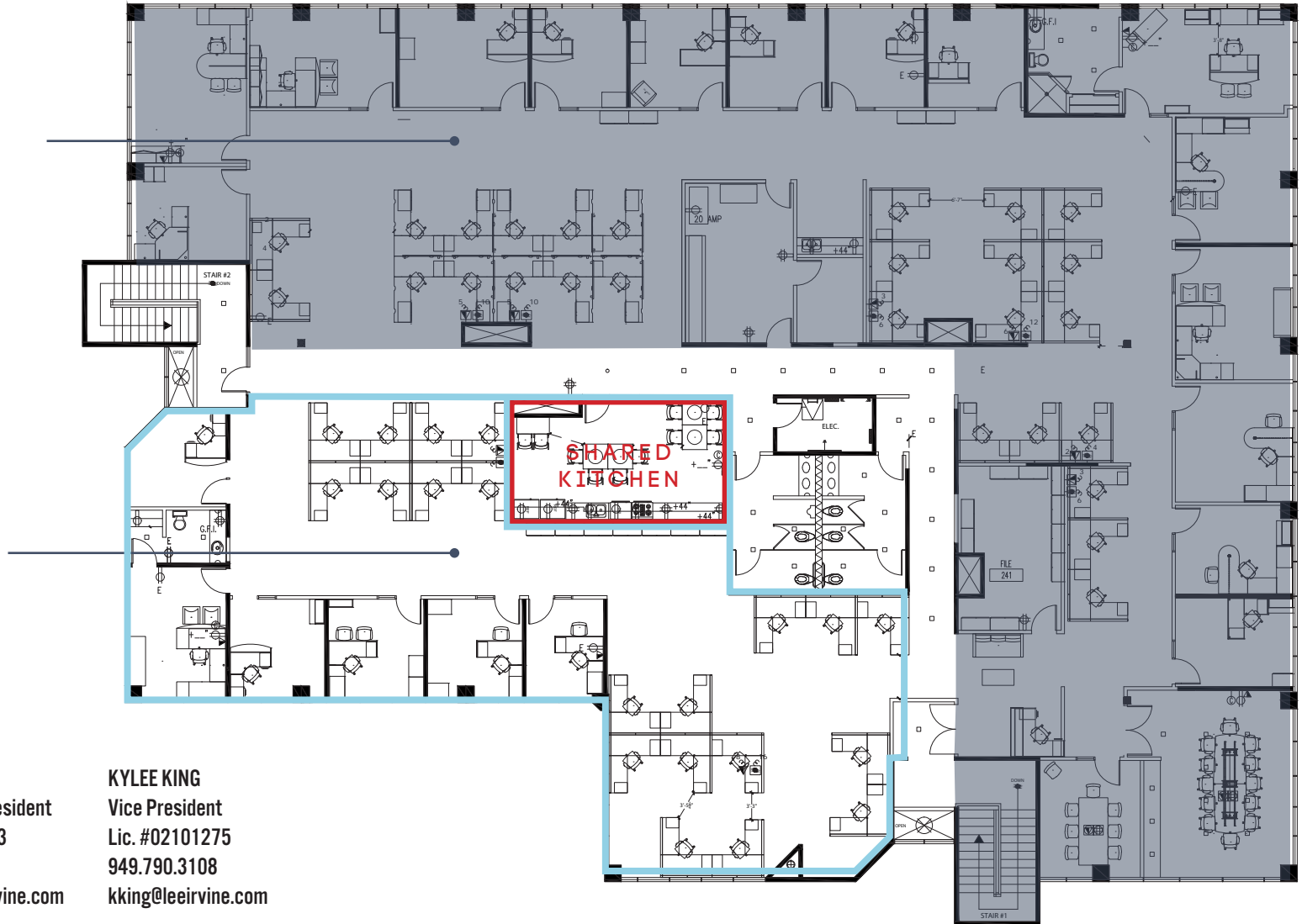


SKYPARK

18006 SKY PARK CIRCLE | IRVINE, CALIFORNIA

SKYPARK

18006 SKY PARK CIRCLE | IRVINE, CALIFORNIA



SUITE 201
3,120 SF

ALLEN BASSO
Senior Vice President
Lic. #01298152
949.790.3130
abasso@leeirvine.com

ERIC DARNELL
Senior Vice President
Lic. #01888743
949.790.3157
edarnell@leeirvine.com

KYLEE KING
Vice President
Lic. #02101275
949.790.3108
kking@leeirvine.com