



Leander Tech Park

Texas Highway 29 at Kauffman Loop
Leander, TX 78641



SJPI.COM/AUSTIN | 512.907.0400

About Leander Tech Park

Leander Tech Park is located at the southwest intersection of Texas Highway 29 and Kauffman Loop in Leander, Texas. The business community provides easy access to surrounding areas with immediate access to Highway 29. The project is located at the connection of Liberty Hill, Georgetown and Leander.

Upon completion, the 50-acre community will contain over 253,000 square feet of flex/R&D space and 18,850 square feet of inline retail space. Development plans also include up to 5.64 acres of land for pad site use.

For more information on Leander Tech Park, visit: sjpi.com/leandertech

Demographics			
	3 Miles	5 Miles	7 Miles
Population	37,527	78,259	141,464
Avg. Household Income	\$173,746	\$177,733	\$178,753

Flex/R&D Buildings

Building A	51,120 SF	LEED DESIGNED
Building B	38,120 SF	LEED DESIGNED
Building C	40,080 SF	LEED DESIGNED
Building D	42,120 SF	LEED DESIGNED
Building E	31,560 SF	LEED DESIGNED
Building F	50,120 SF	LEED DESIGNED

Flex/R&D Specifications

LEED	Designed
Suite Sizes	Up to 50,120 SF
Ceiling Height	18 ft. clear minimum
Parking	4 spaces per 1,000 SF
Construction	Masonry with limestone facade
Loading	Dock and drive-in

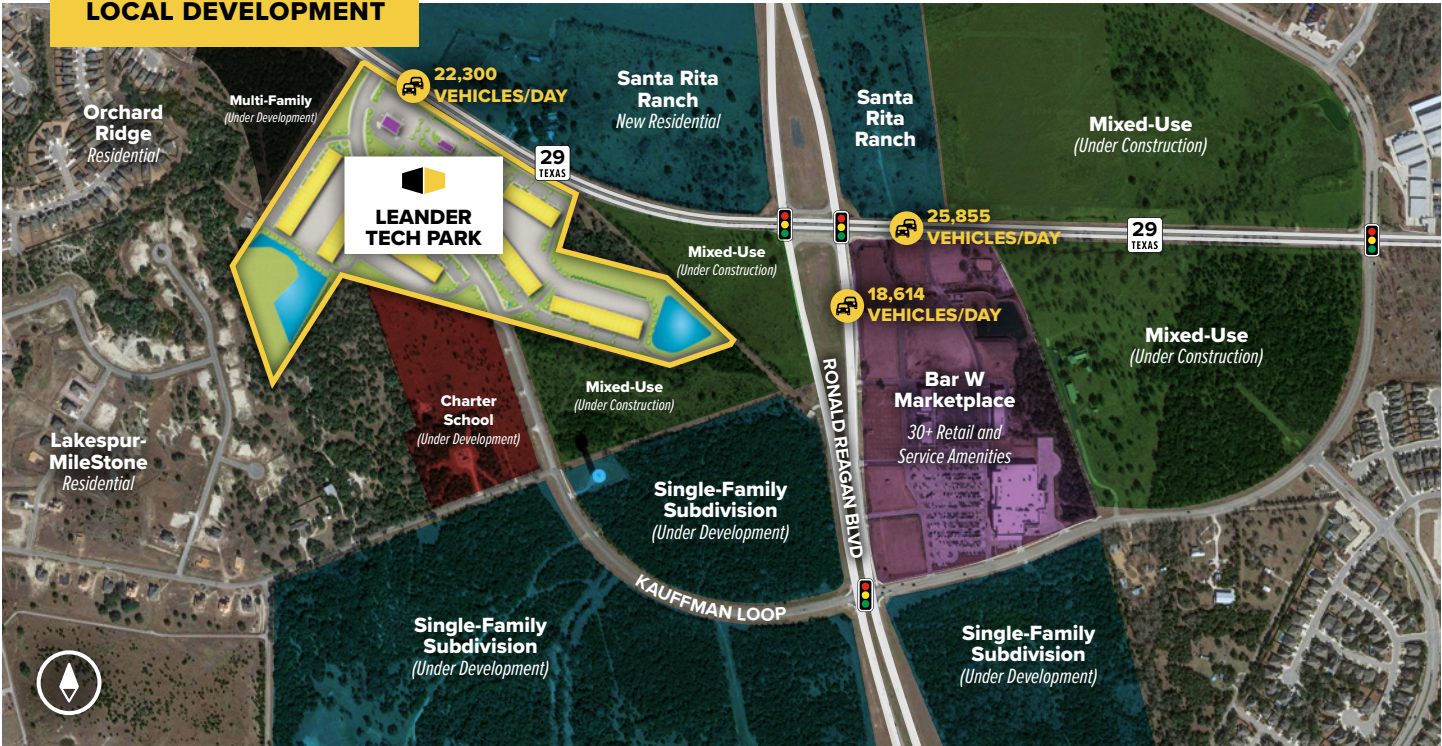
Retail Buildings

Building H	8,125 SF
Building I	10,725 SF

Pad Sites

Pad A	2.73 AC	Convenience Store
Pad B	1.42 AC	Fast Food Restaurant
Pad C	1.49 AC	Fast Food Restaurant

LOCAL DEVELOPMENT





Leander Tech Park | Site Plan



22,996
VEHICLES/DAY



25,855
VEHICLES/DAY

29
TEXAS

W STATE HIGHWAY 29

KAUFFMAN LOOP

RONALD REAGAN BOULEVARD

BAR W MARKETPLACE



PADA 2.73 AC

PAD B 1.42 AC

PAD C 1.49 AC

Retail I 10,725 SF

Retail H 8,125 SF

Building E 31,560 SF

Building D 42,120 SF

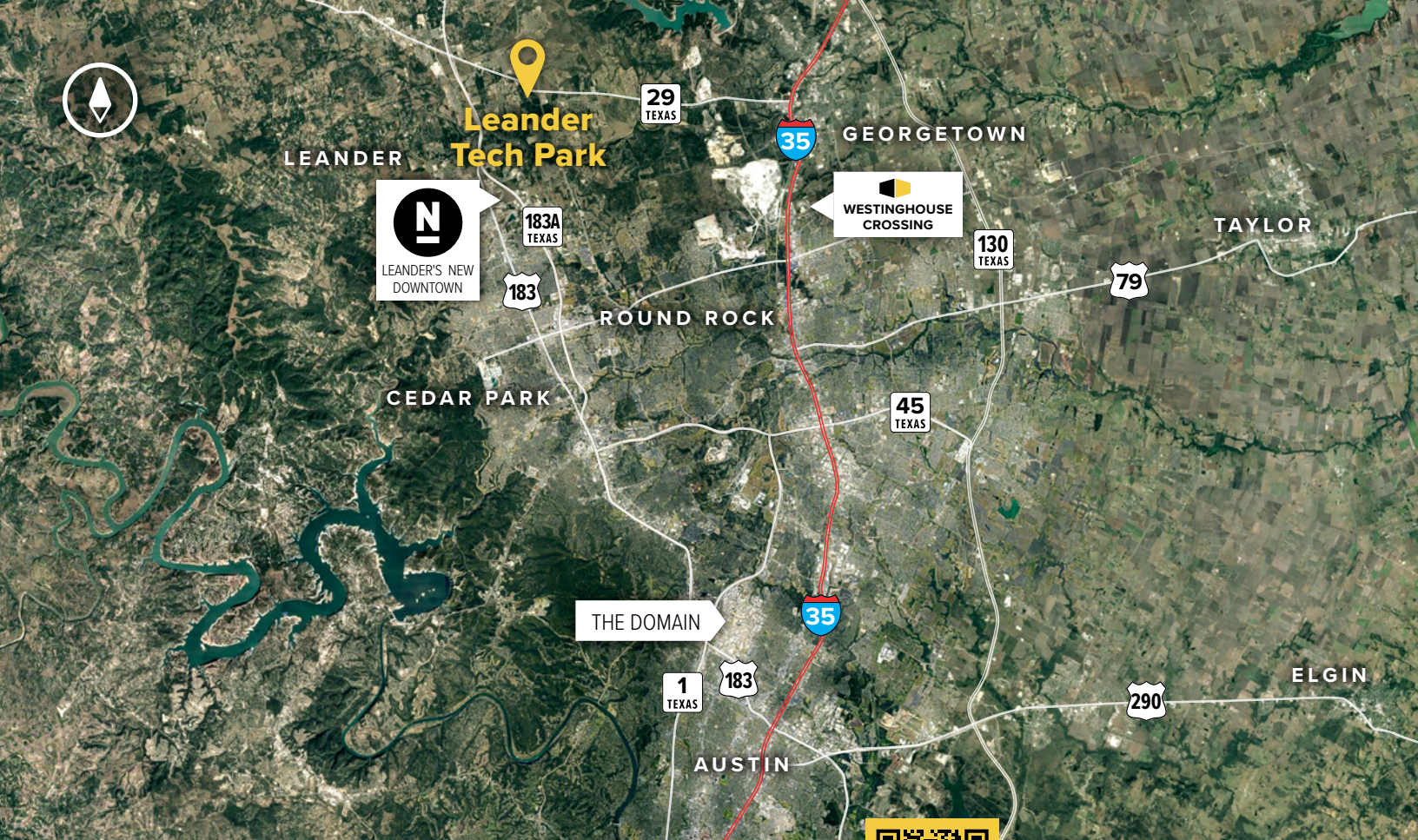
Building C 40,080 SF

Building B 38,120 SF

Building A 51,120 SF

Building F 50,120 SF





Scan now to take a virtual tour, download floor plans and more!

Distances to:

- US Route 183 4 miles
- Interstate 35 8 miles
- Georgetown, TX (Downtown) 9 miles
- Austin, TX (Downtown) 34 miles
- Austin-Bergstrom International Airport40 miles
- San Antonio, TX (Downtown) 113 miles
- Dallas, TX (Downtown)176 miles
- Houston, TX (Downtown) 195 miles

Contact Us

For additional leasing information or to schedule a tour, contact:

Brooke Harlander
 Regional Partner
 BHarlander@sjpi.com | 512.907.0400

Austin Regional Office:
 7718 Wood Hollow Drive | Suite 103
 Austin, TX 78731

512.907.0400 | SJPI.COM/AUSTIN

About St. John Properties
 St. John Properties, Inc. is one of the nation's largest and most successful privately held commercial real estate firms. Founded in 1971, the vertically-integrated company develops, owns and manages office, flex/ research and development, warehouse, retail and residential space nationwide.

Connect with us @stjohnprop



This information contained in this publication has been obtained from sources believed to be reliable. St. John Properties makes no guarantee, warranty or representation about this information. Any projections, opinions, assumptions or estimates used here are for example only and do not represent the current or future performance of the property. Interested parties should conduct an independent investigation to determine whether the property suits their needs. REV 02/25