



## 48sqm Leasing Lot in Melbourne's Prime CBD

Lease a 48sqm space in Melbourne's prime CBD location, steps from RMIT, Melbourne Central & Queen Victoria Market. Perfect for retail, office, or service businesses. Flexible rental terms.

**negotiable**

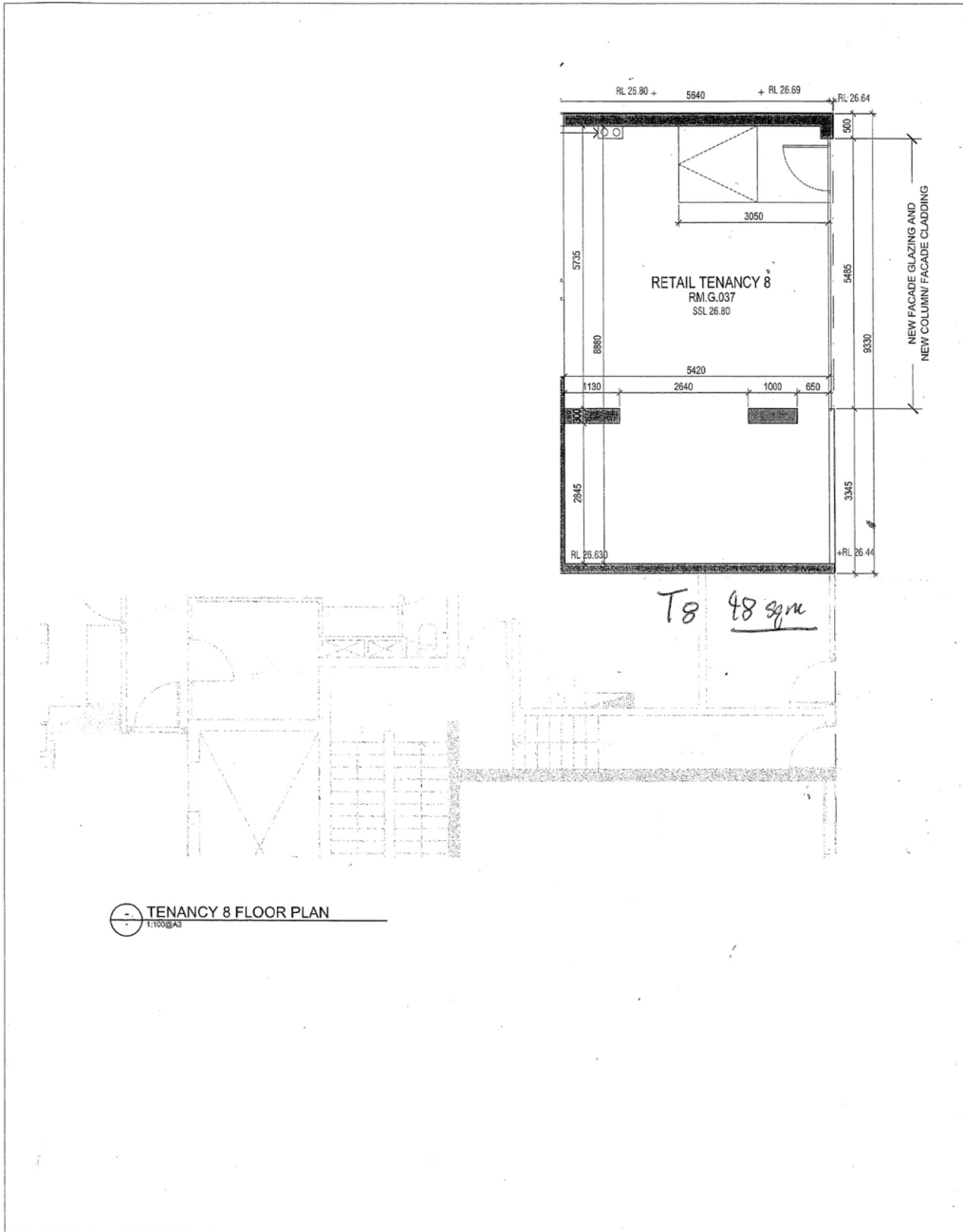
**Land Area**

48m<sup>2</sup>

**Building**

48m<sup>2</sup>

**Arrowon Swanston**



TENANCY 8 FLOOR PLAN  
1:100 BAS

<b>PARTICULAR</b>	<b>ARCHITECT PARTICULAR</b> SUITE 9.12 LEVEL 9, 365 LT COLLINS ST MELBOURNE VIC 3000 PH: 9942 3082 EMAIL: admin@particular.ch	<b>DESCRIPTION</b> ISSUED FOR INFORMATION
	<b>CLIENT ARROW ON SWANSTON</b> 488 SWANSTON STREET CARLTON VIC 3053	- - - - - -

