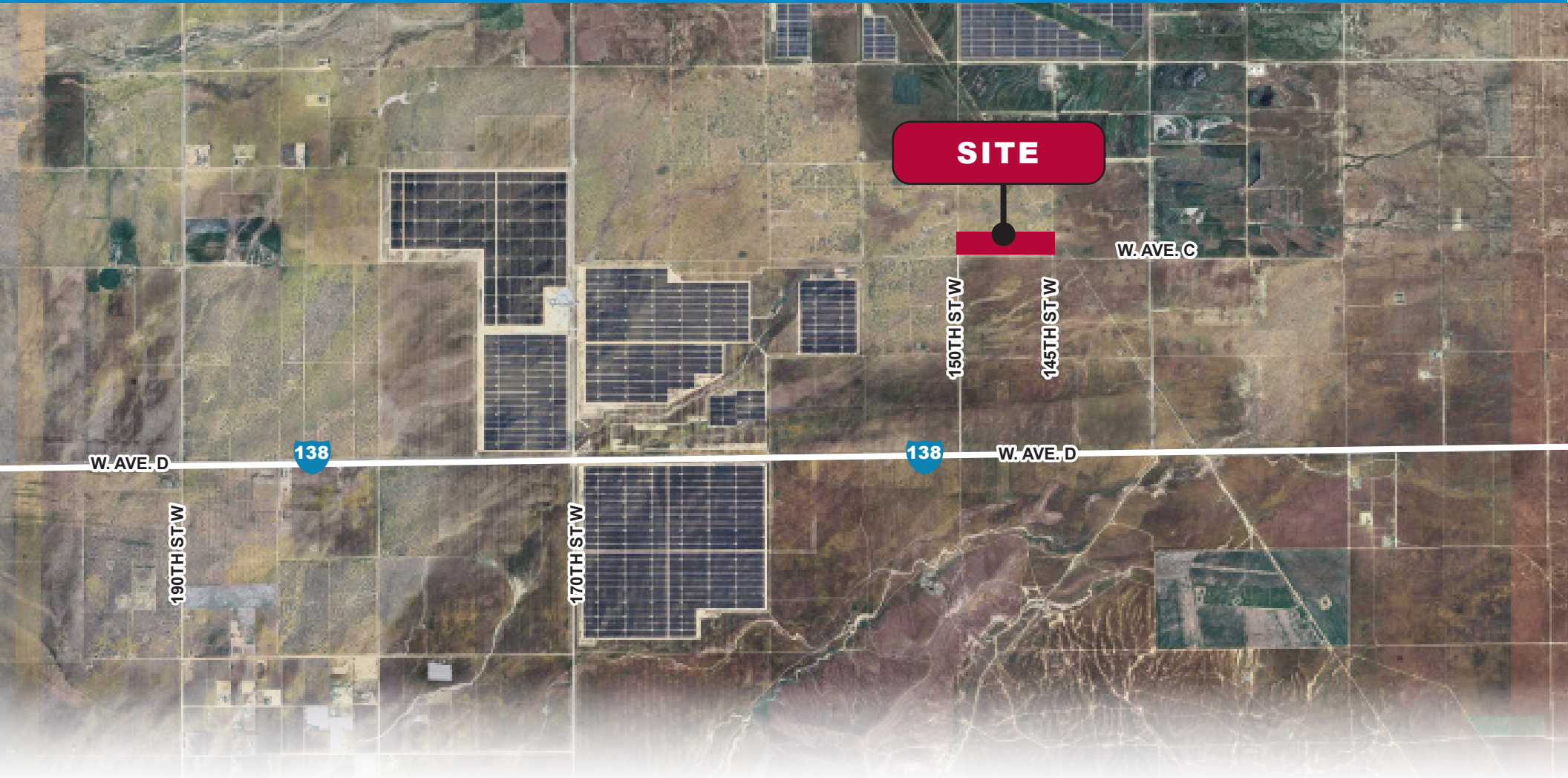


# 35.1 ACRES AVAILABLE IN LANCASTER



## FOR SALE/LEASE

NEC W. AVENUE C AND 150TH ST W  
LANCASTER | CA

### EXCLUSIVE LISTING AGENTS:

**DAN FOYE**  
EXECUTIVE VICE PRESIDENT/PRINCIPAL  
P: 909.912.0009 | M: 909.489.3751  
DAN.FOYE@DAUMCOMMERCIAL.COM  
CADRE #01292002

**RICHARD C. JOHN | SIOR**  
EXECUTIVE VICE PRESIDENT  
P: 909.912.0001 | M: 949.378.4661  
R.J@DAUMCOMMERCIAL.COM  
CADRE #00800783

Although all information is furnished regarding for sale, rental or financing from sources deemed reliable, such information has not been verified and no express representation is made nor is any to be implied as to the accuracy thereof, and it is submitted subject to errors, omissions, changes of price, rental or other conditions, prior sale, lease or financing, or withdrawal without notice. D/AQ Corp. # 01129558

**DAUM**  
COMMERCIAL REAL ESTATE SERVICES

# 35.1 ACRES AVAILABLE

## PROPERTY HIGHLIGHTS

- 1 APN: 3258-010-029  
17.50 AC
- 2 APN: 3258-010-055  
5.00 AC
- 3 APN: 3258-010-056  
5.00 AC
- 4 APN: 3258-010-057  
2.51 AC
- 5 APN: 3258-010-058  
5.00 AC

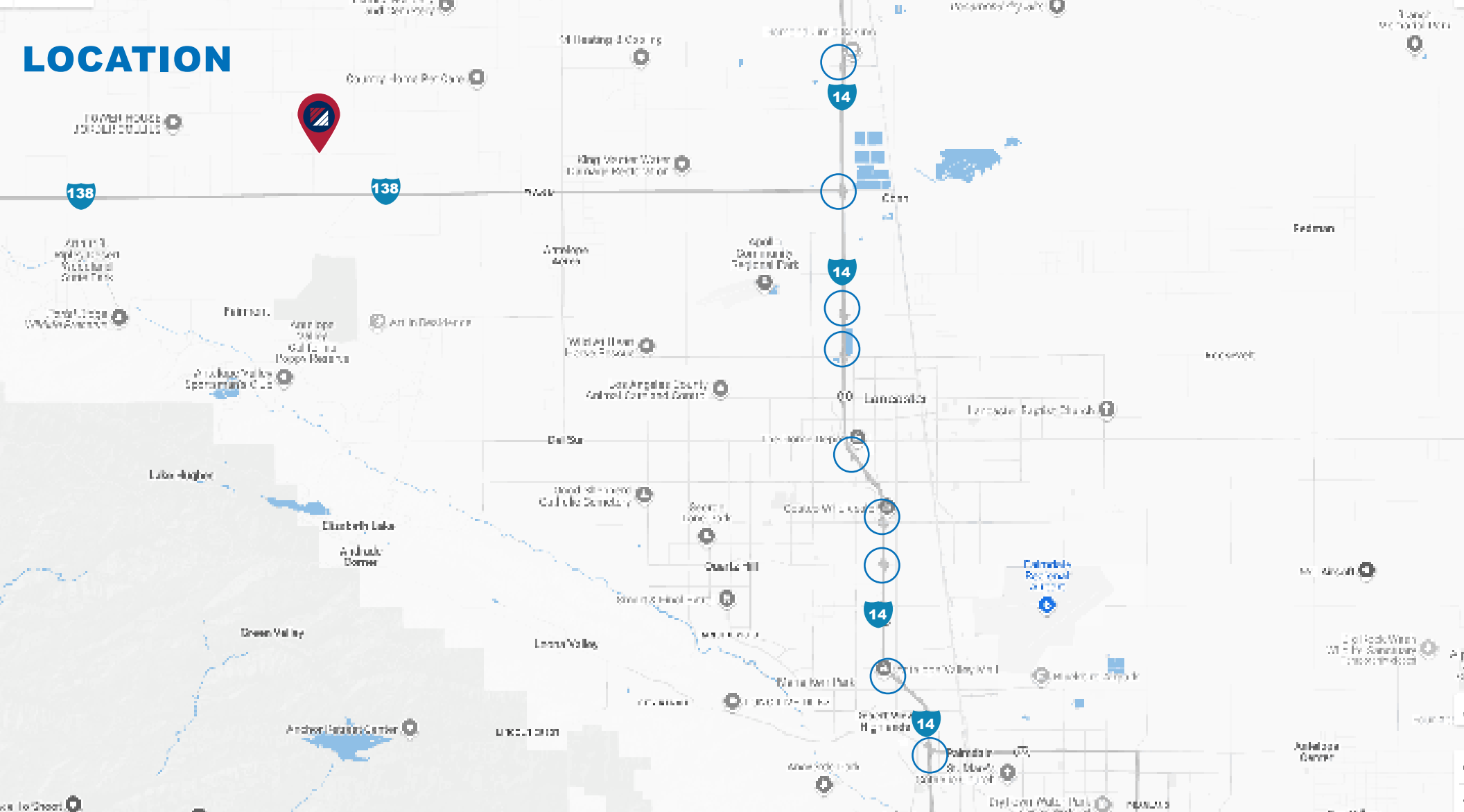
## CLOSE PROXIMITY TO SOLAR FIELDS

ASKING \$100,000 | \$2,849 AN ACRE



Although all information is furnished regarding for sale, rental or financing from sources deemed reliable, such information has not been verified and no express representation is made nor is any to be implied as to the accuracy thereof, and it is submitted subject to errors, omissions, changes of price, rental or other conditions, prior sale, lease or financing, or withdrawal without notice. D/AQ Corp. # 01129558

# LOCATION



## FREEWAYS

138 Freeway	0.8 Mi
14 Freeway	18.0 Mi
5 Freeway	25.3 Mi



## AIRPORTS

Palmdale Regional Airport	11.9 Mi
Burbank Airport	57.9 Mi
LAX	77.6 Mi
John Wayne	108 Mi



## INTERMODAL/PORTS

Union Pacific Intermodal Yard	71.9 Mi
BNSF Intermodal Yard	78.2 Mi
Port of Long Beach	96.3 Mi
Port of Los Angeles	94.9 Mi

### EXCLUSIVE LISTING AGENTS:

**DAN FOYE**  
 EXECUTIVE VICE PRESIDENT/PRINCIPAL  
 P: 909.912.0009 | M: 909.489.3751  
 DAN.FOYE@DAUMCOMMERCIAL.COM  
 CADRE #01292002

**RICHARD C. JOHN | SIOR**  
 EXECUTIVE VICE PRESIDENT  
 P: 909.912.0001 | M: 949.378.4661  
 RJ@DAUMCOMMERCIAL.COM  
 CADRE #00800783

