

FOR LEASE: PEARL DISTRICT CREATIVE COMMERCIAL SPACES FOR LEASE

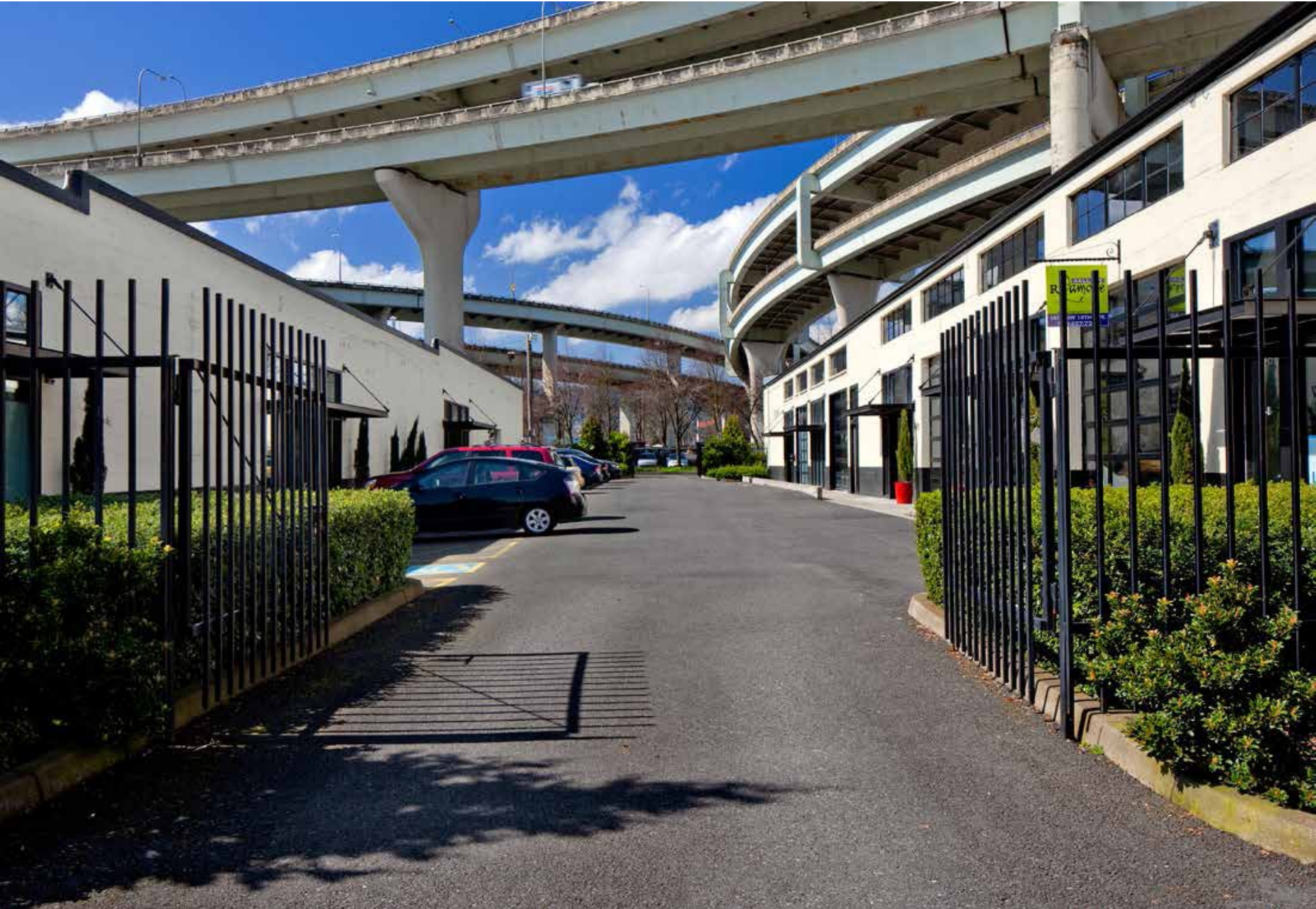
Raleigh Square - NW 14th + 15th Avenue and NW Raleigh Street - Portland Oregon



**COMMERCIAL
BLACK.**



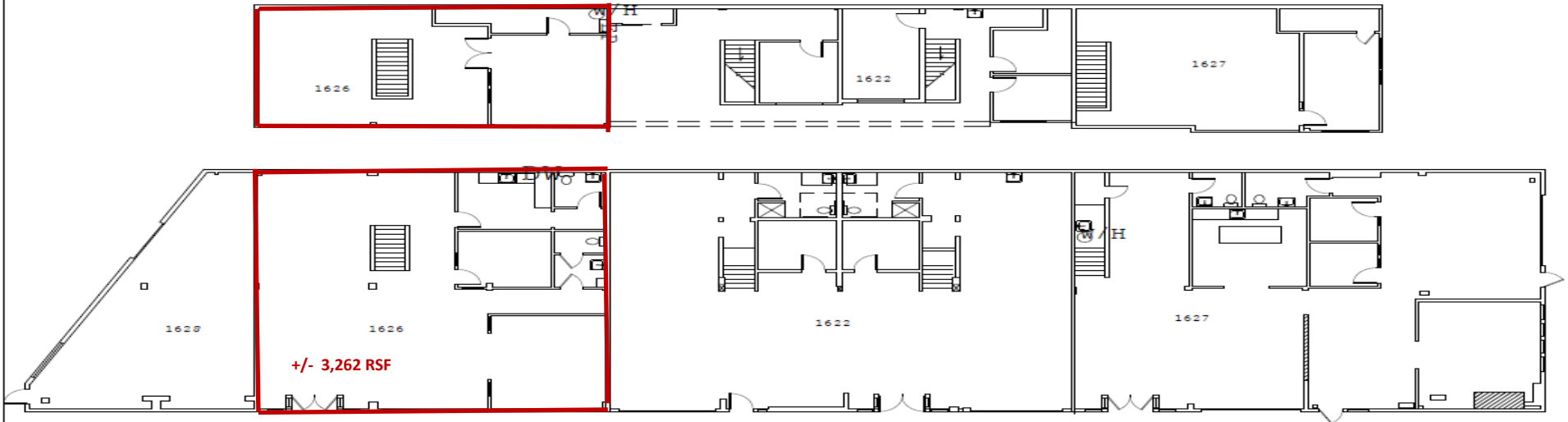
BUILDING COURTYARD + PARKING LOT



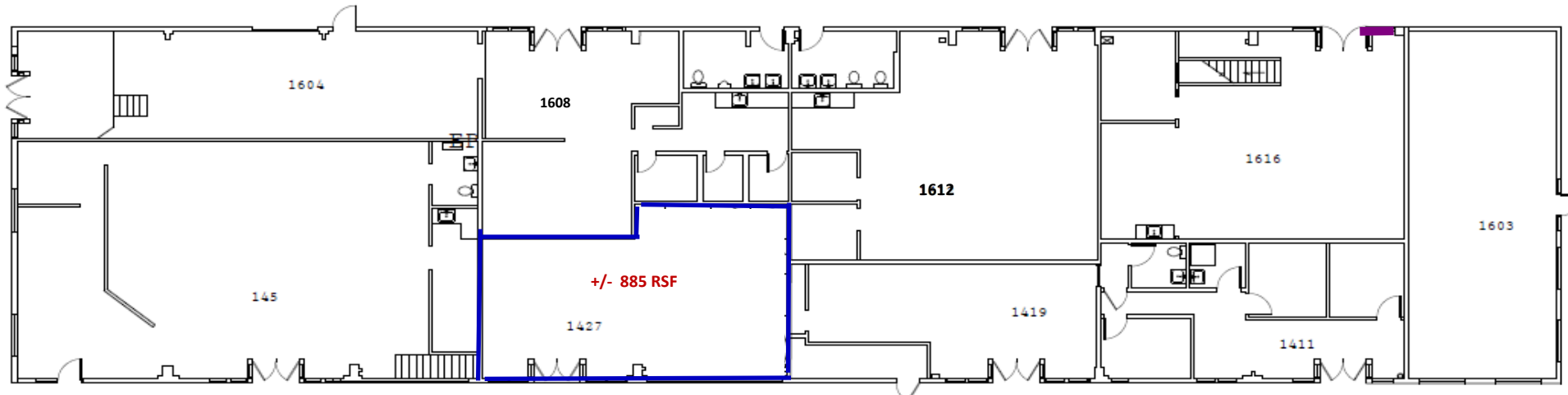
AERIAL PHOTO—NORTH PEARL DISTRICT



Building Plan & Vacancies



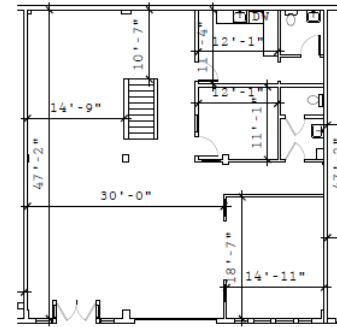
1 BLDG PLAN 1622-1628
A1.0 SCALE:N.T.S



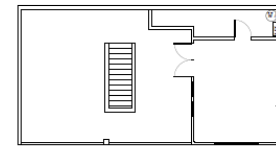
1 BLDG PLAN 1411-1616
A1.0 SCALE:N.T.S

Availability

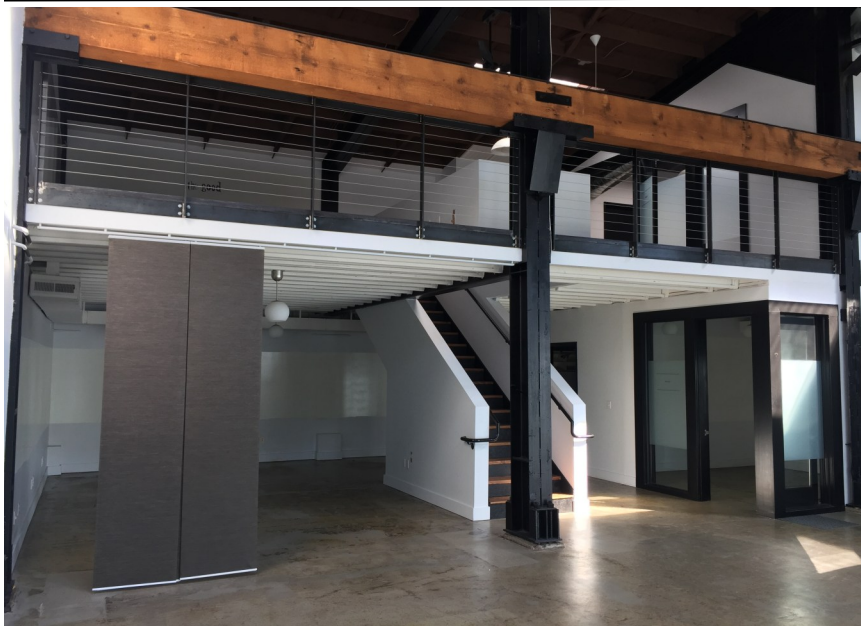
- Suite: **1626 NW Raleigh Street – Direct Lease**
- RSF: **+/- 3,262 RSF**
- Rate: **\$10.00 NNN**
- Nets: **\$13.75 Per RSF**
- Available: **Immediately - Move in ready**
- Features:
 - Open layout with mezzanine level
 - High Ceilings
 - Exposed rafters
 - 14 foot roll up door
 - Open Studio Layout
 - Two (2) Private Restrooms
 - Full Kitchen
 - Sky Lights
 - Two (2) free parking stalls



1 FLOOR PLAN SUITE 1626
A1.0 SCALE: 1/16" = 1'-0" 3,214 USF/3,262 RSF



2 MEZZANINE 1626
A1.0 SCALE: 1/16" = 1'-0"



Availability

Suite: 1427 NW Raleigh Street – Direct Lease

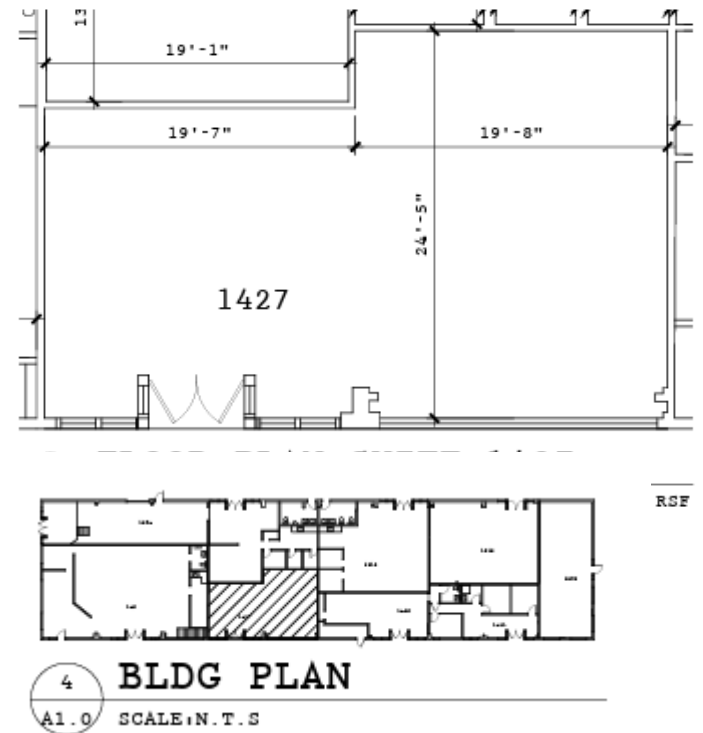
RSF: +/- 885 RSF

Rate: \$10.00 NNN

Nets: \$13.75 Per RSF

Available: 30 Days

Features: Great display / showroom area
Open layout
High Ceilings
Exposed rafters
Open Studio Layout
Sky Lights
Ample north pearl neighborhood parking



Raleigh Square offers a unique opportunity to have creative space in NW Portland /Pearl District.

- ⇒ Creative office space in ultra urban location
- ⇒ Area hub for restaurants, shopping, and entertainment
- ⇒ Walking distance to street car line and close access to freeways
- ⇒ High ceilings and exposed center cut old growth beams
- ⇒ Abundant natural light
- ⇒ Secure facility
- ⇒ Move in ready, but Landlord willing to make improvements for new tenants
- ⇒ Onsite parking

Please direct all inquiries to :
John Gibson - Licensed Oregon Principal Broker
OR# 971000078
2393 SW Park Place #110 Portland Oregon 97205
503.860.3267
john.gibson@commercialblack.com
www.commericalblack.com



OREGON REAL ESTATE AGENCY

Initial Agency
Disclosure Pamphlet

