

8970-8990 DIXIE HIGHWAY CLARKSTON, MICHIGAN

OFFICE CAMPUS FOR SALE
20,984 Square Feet Available



**SIGNATURE
ASSOCIATES**
KNOW SIGNATURE | KNOW RESULTS



PROPERTY FEATURES

- Unique opportunity to purchase an office campus on 6.39 acres with lake access and moments from I-75 in Clarkston
- 20,984 square feet available
 - 8970 Dixie Highway
 - Building A: 7,694 sq. ft.
 - Building B: 6,736 sq. ft.
 - 8990 Dixie Highway
 - Building C: 6,554 sq. ft.
- Zoned OS & R3
- Built in 1990, retrofit in 2004
- Fantastic property with gymnasium
- Formerly used as private school, but many other uses are possible
- Asking Price: \$2,475,000 (\$117.95/sq. ft.)



For more information, please contact:

JOHN BOYD
(248) 948 0102
jboyd@signatureassociates.com

JEFFREY TREPECK
(248) 359 0626
jtrepeck@signatureassociates.com

SIGNATURE ASSOCIATES
One Towne Square, Suite 1200
Southfield, MI 48076
www.signatureassociates.com

8970-8990 Dixie Highway – Clarkston, Michigan

Office For Sale

20,984
Square Feet
AVAILABLE

Additional Images



For more information, please contact:

JOHN BOYD
(248) 948 0102
jboyd@signatureassociates.com

JEFFREY TREPECK
(248) 359 0626
jtrepeck@signatureassociates.com

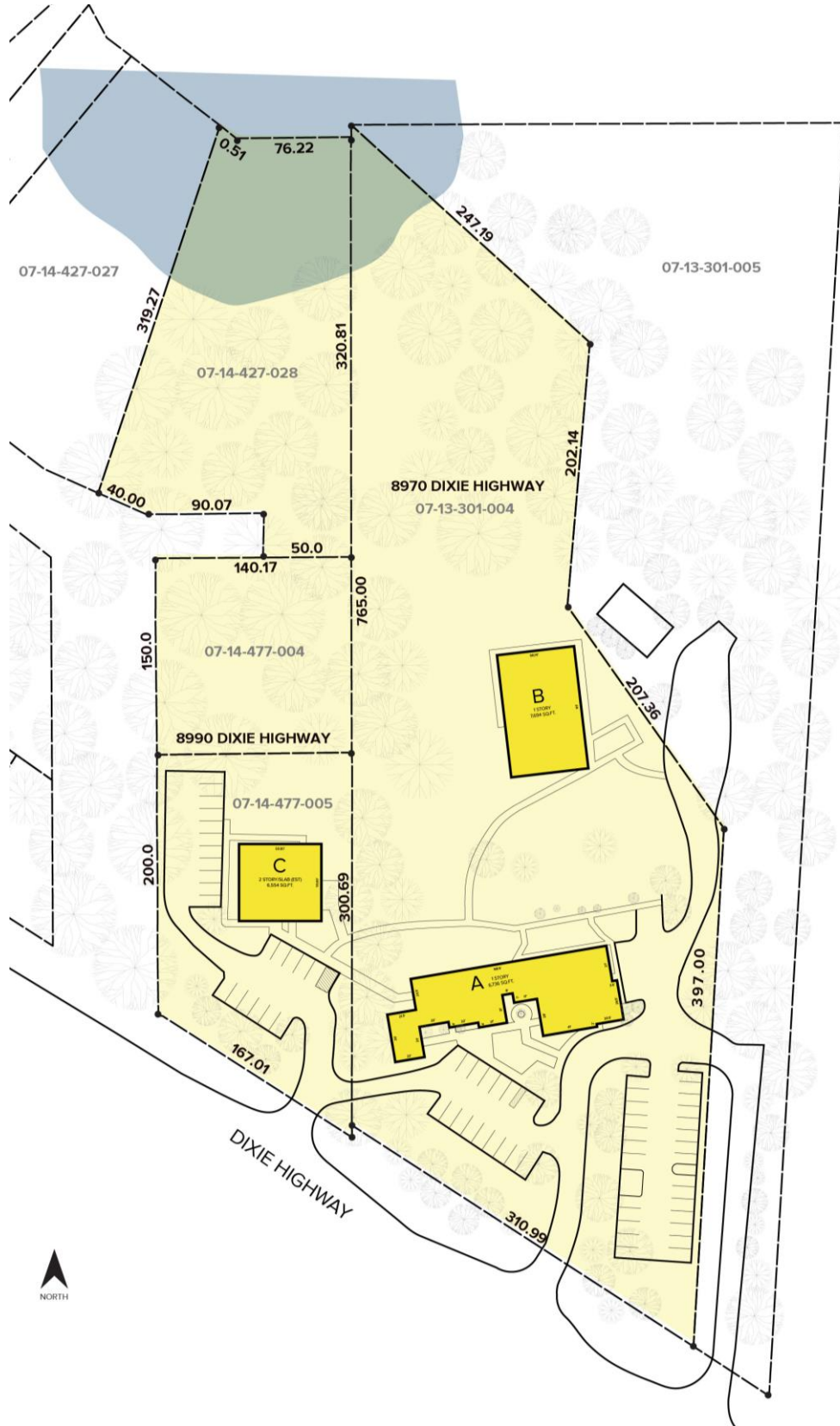
SIGNATURE ASSOCIATES
One Towne Square, Suite 1200
Southfield, MI 48076
www.signatureassociates.com

8970-8990 Dixie Highway – Clarkston, Michigan

Office For Sale

20,984
Square Feet
AVAILABLE

Site Plan



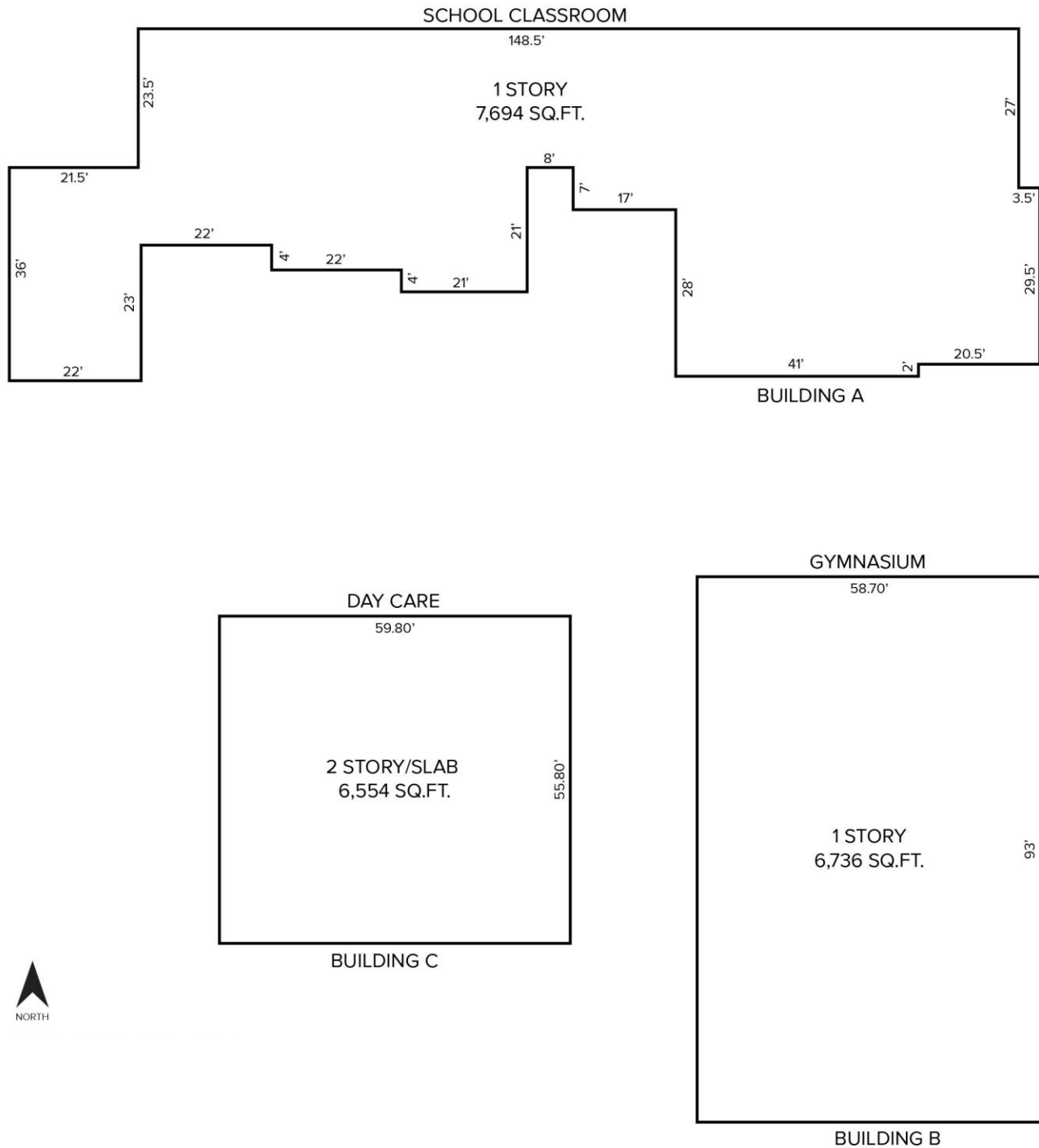
For more information, please contact:

JOHN BOYD
(248) 948 0102
jboyd@signatureassociates.com

JEFFREY TREPECK
(248) 359 0626
jtrepeck@signatureassociates.com

SIGNATURE ASSOCIATES
One Towne Square, Suite 1200
Southfield, MI 48076
www.signatureassociates.com

Floor Plan



For more information, please contact:

JOHN BOYD
(248) 948 0102
jboyd@signatureassociates.com

JEFFREY TREPECK
(248) 359 0626
jtrepeck@signatureassociates.com

SIGNATURE ASSOCIATES
One Towne Square, Suite 1200
Southfield, MI 48076
www.signatureassociates.com

8970-8990 Dixie Highway – Clarkston, Michigan

Office For Sale

20,984
Square Feet
AVAILABLE

Aerial



For more information, please contact:

JOHN BOYD
(248) 948 0102
jboyd@signatureassociates.com

JEFFREY TREPECK
(248) 359 0626
jtrepeck@signatureassociates.com

SIGNATURE ASSOCIATES
One Towne Square, Suite 1200
Southfield, MI 48076
www.signatureassociates.com

Information is subject to verification and no liability for errors or omissions is assumed. Price is subject to change and listing withdrawal.