

MULTI-FAMILY/RETAIL DEVELOPMENT

LAND FOR SALE



PROPERTY DESCRIPTION

±0.82 acre site approved for 37 units with parking. Just steps from downtown Mooresville's main retail thoroughfare, restaurants, and night life. Well-suited as for sale or for rent condos. Site is within the Mooresville Graded School District, which is a top ranked district in North Carolina. Owner will sell, joint venture, or owner finance.

PROPERTY HIGHLIGHTS

- ±0.82 acre site approved for 37 units with parking
- Steps from downtown Mooresville's retail thoroughfare, restaurants, and nightlife
- Well-suited for sale or for rent condos
- Within the Mooresville Graded School District, a top-ranked district in North Carolina
- Owner open to selling, joint venture, or owner financing

OFFERING SUMMARY

Sale Price:	\$1,100,000
Lot Size:	0.82 Acres

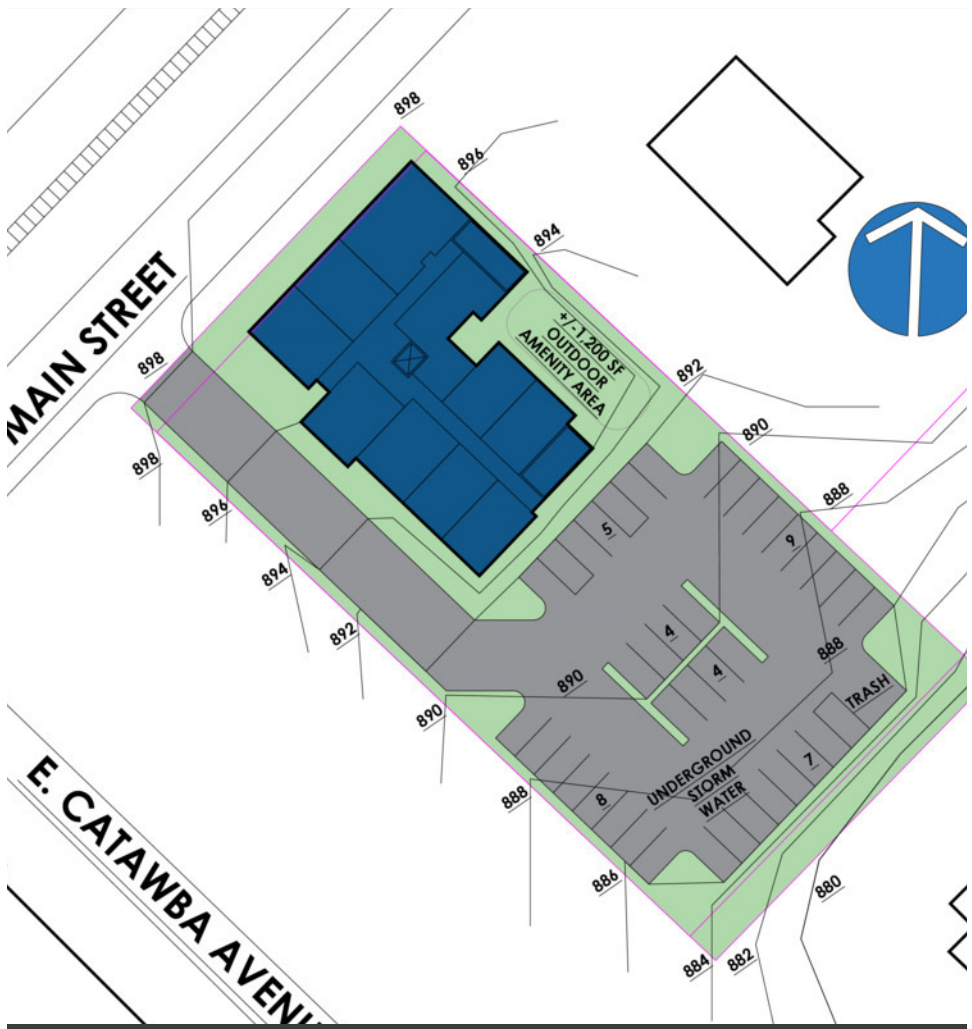
Nick Gonzalez

336.724.1715
nick@ltpcommercial.com

Linville | Team Partners
COMMERCIAL REAL ESTATE

MULTI-FAMILY/RETAIL DEVELOPMENT

LAND FOR SALE



Proposed Plan Option 1

PLAN DETAILS

Unit Type	For Sale or For Rent
Land Size	0.82 Acres
Total Floors	4
Unit Count	37
Total Size	31,869 SF
Parking Spaces	40



Aerial

Nick Gonzalez

336.724.1715
nick@ltpcommercial.com

Linville | Team Partners
COMMERCIAL REAL ESTATE

MULTI-FAMILY/RETAIL DEVELOPMENT

LAND FOR SALE

PLAN DETAILS

Land Size	0.82 Acres
Total Floors	4
Unit Count	23
Total Size	33,847 SF
Parking Spaces	37



Aerial



Proposed Plan Option 2

Nick Gonzalez

336.724.1715
nick@ltpcommercial.com

Linville | Team Partners
COMMERCIAL REAL ESTATE

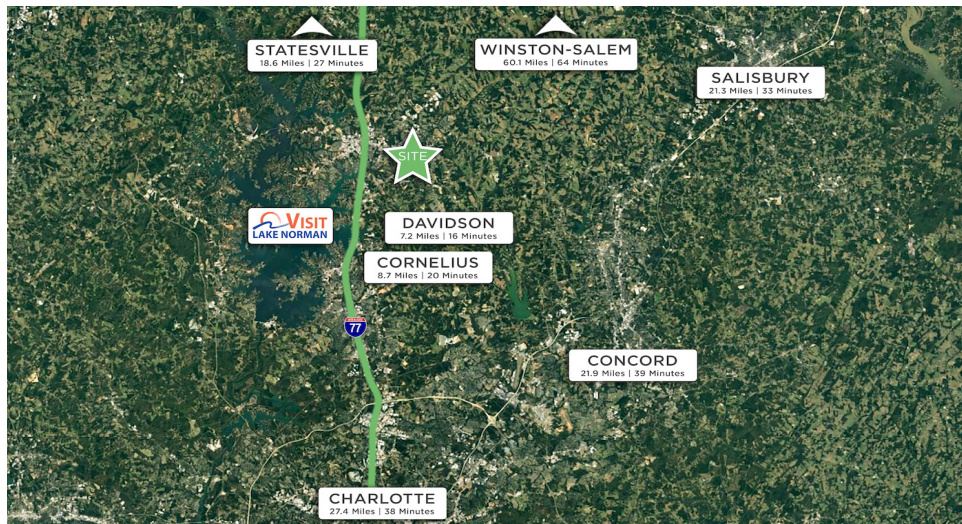
MULTI-FAMILY/RETAIL DEVELOPMENT

LAND FOR SALE



LOCATION DESCRIPTION

Moore'sville is located in the southwestern section of Iredell County, North Carolina, and is a part of the fast-growing Charlotte metropolitan area. The city is the most populous municipality in Iredell County. It is located approximately 25 miles north of Charlotte. Moore'sville is the corporate headquarters of Lowe's Companies, Inc., one of the largest home improvement retailers in the world. Lowe's has a significant presence in the town, employing thousands of residents and contributing to the local economy. Moore'sville is also known as the home of many NASCAR racing teams and drivers, along with an IndyCar team and its drivers, as well as racing technology suppliers. Moore'sville is situated on the shores of Lake Norman, a large man-made lake created by the construction of the Cowans Ford Dam on the Catawba River. Lake Norman offers various recreational activities, including boating, fishing, and water sports, and it attracts many visitors and residents who enjoy its scenic beauty.



MOORESVILLE, NORTH CAROLINA

- # Fastest Growing City in North Carolina (GoBankingRates, 2023)
- #2 Fastest NC County Population Growth (Charlotte Business Journal, 2023)
- #1 Lowest Tax Rate in Charlotte Region (NC Department of Commerce, 2023)
- #2 Fastest Growing Retail Sector in NC (NC Department of Commerce, 2023)
- #1 County for Economic Growth | Charlotte Metro (Charlotte Business Journal, 2023)
- #14 Best Counties to Live in NC (Niche, 2023)

Nick Gonzalez

336.724.1715
nick@ltpcommercial.com

Linville | Team Partners
COMMERCIAL REAL ESTATE

MULTI-FAMILY/RETAIL DEVELOPMENT

LAND FOR SALE



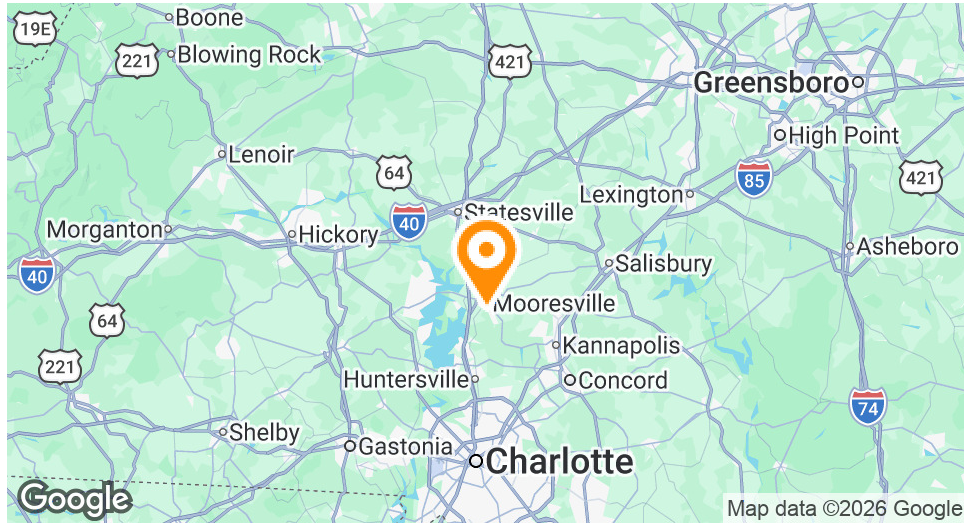
Nick Gonzalez

336.724.1715
nick@ltpcommercial.com

Linville | Team Partners
COMMERCIAL REAL ESTATE

MULTI-FAMILY/RETAIL DEVELOPMENT

LAND FOR SALE



Building Name	Multi-Family/Retail Development
Lot Size	0.82 Acres

±0.82 acre site approved for 37 units with parking. Just steps from downtown Mooresville’s main retail thoroughfare, restaurants, and night life. Well-suited as for sale or for rent condos. Site is within the Mooresville Graded School District, which is a top ranked district in North Carolina. Owner will sell, joint venture, or owner finance.

- ±0.82 acre site approved for 37 units with parking
- Steps from downtown Mooresville's retail thoroughfare, restaurants, and nightlife
- Well-suited for sale or for rent condos
- Within the Mooresville Graded School District, a top-ranked district in North Carolina
- Owner open to selling, joint venture, or owner financing

Nick Gonzalez
 336.724.1715
 nick@ltpcommercial.com

Linville | Team Partners
 COMMERCIAL REAL ESTATE

MULTI-FAMILY/RETAIL DEVELOPMENT

LAND FOR SALE

LOCATION INFORMATION

Building Name	Multi-Family/Retail Development
Street Address	260 S. Main Street
City, State, Zip	Mooreville, NC 28115
County	Iredell

Sale Price

\$1,100,000

PROPERTY INFORMATION

Property Type	Land
Property Subtype	Multifamily/Retail
Lot Size	0.82 Acres



Nick Gonzalez

336.724.1715
nick@ltpcommercial.com

Linville | Team Partners

COMMERCIAL REAL ESTATE

The information contained herein has been taken from sources deemed to be reliable. Linville Team Partners makes no representation or warranties, expressed or implied, as to the accuracy of this information. All information in this document is subject to verification prior to purchase or lease.